

Sunday, October 13

DEFINITELY DIFFERENT 2019

12 p.m. (EST) – 11554 100th St., Alto, MI 49302

Ridgeview Farm
Bob & Jami Goble

LANDRUM
FAMILY FARMS

GMF

• grand meadows farm •

mƒ

McDonald Farm



Chez/Pugh/Hara Logic 8815F ET



Ridgeview Farm

Bob & Jami Goble

11554 100th St.
Alto, MI 49302
616-299-8681

jami@ridgeviewfarm-goble.com

The Goble family welcomes you to the 2019 edition of Definitely Different.

2019! What do I say, it has been one of the most challenging and stressful times of my life and I think Jami would agree, without getting into all the specifics. Jami took cancer by the horns and kicked its ass, so proud of her. The kids have been supportive and picked up to help mom more than they ever have and I say thank you to them.

The cattle for this year's sale look great! I think you all will be very impressed when you evaluate them. We bred all the cows to Duke this year. I think that you will agree, sometimes the walking bull will outperform AI and this is the case for sure.

I thank our partners, our friends and our community this year more than ever for their support.

Please don't hesitate to call if we can help you in any way. We look forward to seeing you on Sunday, Oct. 13!

**Regards,
Bob**



Ridgeview Farm
Bob & Jami Goble

Bob and Jami Goble
11554 100th St.
Alto, MI 49302
616-299-8681
jami@ridgeviewfarm-goble.com

Lots 1-18

**LANDRUM
FAMILY FARMS**

1412 W. 900 S.
Warren, IN 46792
Thatcher 260-917-0177
Joe 260-466-8149
Jane 260-917-0036

Lots 19-31

GMF

• grand meadows farm •

Dave and Jill Bielema Family
greatlakesherefordbeef@gmail.com
grandmeadowsfarm.com
616-292-7474

Lots 32-40

mf
McDonald Farm

Scott McDonald
7791 Eastern Ave. S.E.
Grand Rapids, MI 49508
616-446-2146
scott@mcdonaldplumbing.com

Lots 41-56

Sunday, Oct. 13, 2019 • 12 p.m. (EST)

Bob's cell 616-299-8681 • Jami's cell 616-366-6533

GPS Address: 11554 100th St., Alto, MI 49302

Terms and Conditions

Sale Date & Time: Sunday, October 13, 2019, 12 p.m. (EST)

Location: At the farm in Alto, Mich. I-96 west towards Grand Rapids, Exit 52 (Hwy. 50) south to 100th Street, west 1/2 mile on north side.

Sale Day Phone: Any consignor or Sale Staff will be more than happy to assist.

Registration Certificates: It is the buyer's responsibility to provide seller with the correct name, address and breeder number for transfer of animal.

EPDs: EPDs given are the most current at the time of print.

Liability: Each animal will be the buyer's responsibility as soon as it is sold, but will be cared for a reasonable length of time. Normal precautions will be taken for each animal.

Guarantee: The cattle will sell in accordance to the recommended terms and conditions of the American Hereford Association.

Trucking: We will help arrange trucking at the least possible cost to central drop off points. Trucking expense will be pre-paid at time of settlement.

Transfers: Cattle will not be transferred until paid in full.

Health: Proper health papers will be available. Brucellosis Free and Whole Herd TB tested.

AI Certificates: AI certificates will not be provided unless AI bull is owned by the seller.

Insurance: Insurance will be available through Harding and Harding.

Lunch: Lunch will be provided on Sale Day.

Bids: The auctioneer in charge will have final say in regards to all final bids. We hope everyone can attend, but for those who cannot, you may contact any owner or staff. LiveAuctions will be at the sale for live online bidding as well.

Air Travel: Grand Rapids airport is less than 30 minutes from the farm. If you need pick up arrangements, please let Jami know.

Accommodations: Please contact Jami for a reservation. jami@ridgeviewfarm-goble.com, 616-366-6533 cell.

Sale Book Material: Statements made from the auction block precede any written material.

Genetic Defects: All cattle are free of genetic defects recognized by the American Hereford Assn. as of October 13, 2019.

Sale Staff

Cody Lowderman, Auctioneer	309-313-2171
Dale Stith, Auctioneer	918-760-1550
John Meents, AHA/Hereford World	419-306-7480
Monte Lowderman, Lowderman Cattle Co.	309-255-0110
Lou Ellen Harr, J&L Cattle Services	419-685-0549
Gene Steiner, Steiner Auctions	513-616-4086
Cody Crum, Livestock Plus	217-248-7282

Consignor Contact

Bob Goble	616-299-8681
Jami Goble	616-366-6533
Joe Landrum	260-466-8149
Thatcher Landrum	260-917-0177
Dave Bielema	616-292-7474
Scott McDonald	616-446-2146

Cattle Viewing and Social

Cattle Viewing at 9 a.m., Sunday, Oct. 13th

If you are arriving the night before from out of town, please give us a call.



Lowderman Auction Options

Live Audio, Live Video and Live Bidding!

available via www.lao.live

If you cannot attend the sale don't let that stop you.

Internet Bidding – Safe, Easy, Convenient

Bidding with the live auctioneer.

Bidding on the lots of your choice.

If you choose to bid online please visit

www.lao.live

Online bidders must create an account and

request a buyer number prior to sale day.

Bidding at the click of a button.



Lot 1 – Goble Little Lady 309G



GOBLE LITTLE LADY 309G

P44052293 – Calved: 3/16/19 – Tattoo: RE 309G/LE BJG

GCC JPF LBB ENTICER A117 (OLE.HVF.JEF)
 GOBLE MHPH LITTLE BASS 301C (OLE.HVF.JEF.MSDOF)
 P43605065 MHPH 521X DAINTY 105A

LAKE 002 KILOWATTS 104S (OLE.HVF.JEF)
 JPF K01 MS EMBRACE U11
 TH 122 71I VICTOR 521X ET (OLE.HVF.JEF)
 MHPH MS 101S DAINTY 123U

TH 122 71I VICTOR 719T (S00)(OLE.HVF.JEF.MSDOF)
 CLF GCC LADY G Z248
 P43308188 GOBLE 002 LADY B 211X

DRF JWR PRINCE VICTOR 71I (S00)(OLE.HVF.JEF.MSDOF)
 KBCR 19D DOMINETTE 122 (OLE.HVF.JEF)
 LAKE 002 KILOWATTS 104S (OLE.HVF.JEF)
 GOBLE ROCKY'N LUCE 999T

BMS	342																	
BIIS	414	CE	BW	WW	YW	DMI	SC	SCF	MM	M&G	MCE	MCW	UDDR	TEAT	CW	FAT	REA	MARB
CHBS	104	-4.0	4.1	68	102	0.6	1.1	16.2	22	56	-5.2	91	1.30	1.30	73	-0.022	0.57	-0.04

- What a way to start the catalog for 2019. If you're looking for the show heifer, look no further. Little Lady has the cut we are looking for, sweetest front you could imagine, elegant head, skinny necked. This heifer has show written all over her. And comes from the heart of the boys show heifers. Her dam and grandam will never leave our operation. The look, the genetics, look this one up if your intentions are to have purple hanging in your stall.
- OCV



CLF GCC Lady G Z248 – Dam of Lot 1



Goble 002 Lady B 211X – Grandam of Lot 1



Lot 2 – Goble Sweet Marie 208G



Trent-Hill Myra 1Z – Dam of Lot 2

**LOT
2
COW**

GOBLE SWEET MARIE 208G

P43993302 – Calved: 2/18/19 – Tattoo: RE 208G/LE BJG

NJW 73S M326 TRUST 100W ET (S00)(C0B)(OLE,HVF,JEF,MSDF)
 RVP 100W DUKE 31D (OLE,HVF,JEF,MSDF)
 P43769388 SRF AFFECTION 138A

KCF BENNETT 3008 M326 (S00)(OLE,HVF,JEF)
 NJW P606 72N DAYDREAM 73S (OLE,HVF,JEF,MSDF)
 MSU TCF REVOLUTION 4R (S00)(C0B)(OLE,HVF,JEF)
 BYEVISTA 138 WARDEN 138Y

KJ 2403 RECRUIT 966R (S00)(OLE,HVF,JEF)
 TRENT-HILL MYRA 1Z
 P43769377 TRENT-HILL WYNIFRED 11W

ALLENDALE ROBIN HOOD (S00)(OLE,HVF,JEF)
 MARK DOMETTE MR 2403 (S00)
 FORC 29F BOOMER 18L
 EJM MISS PENNY 14P

BMS	373																	
BIIS	440	CE	BW	WW	YW	DMI	SC	SCF	MM	M&G	MCE	MCW	UDDR	TEAT	CW	FAT	REA	MARB
CHBS	119	-0.2	3.6	56	92	0.2	1.1	17.1	28	56	1.5	106	1.20	1.20	75	-0.002	0.52	0.04

- River Valley found her full sister in the offering last year. I believe this one has the pieces to get it done. Beautifully made daughter of our new herd sire, Duke. We believe this guy will stand the test of time, his pedigree sure has. Her dam is one of those never miss cows and the cross with Duke is a true testament to their genetic potential.
- OCV

**LOT
3
COW**

GOBLE PARKS MISS H 306G

P44053876 – Calved: 3/14/19 – Tattoo: RE 306G/LE BJG

NJW 73S M326 TRUST 100W ET (S00)(C0B)(OLE,HVF,JEF,MSDF)
 RVP 100W DUKE 31D (OLE,HVF,JEF,MSDF)
 P43769388 SRF AFFECTION 138A

KCF BENNETT 3008 M326 (S00)(OLE,HVF,JEF)
 NJW P606 72N DAYDREAM 73S (OLE,HVF,JEF,MSDF)
 MSU TCF REVOLUTION 4R (S00)(C0B)(OLE,HVF,JEF)
 BYEVISTA 138 WARDEN 138Y

STAR TRF 8006 EMBRACER 229 ET
 JPF K01 HONEY U30
 P42973663 JPF 315 DREAM K01

H 8E EMBRACER 8006
 STAR TRF MALLORY 47J
 SSF JPF REPLICA
 JPF MS DREAM 315

BMS	441	Sire:																
BIIS	524	CE	BW	WW	YW	DMI	SC	SCF	MM	M&G	MCE	MCW	UDDR	TEAT	CW	FAT	REA	MARB
CHBS	138	0.1	2.6	63	111	0.4	1.2	19.8	31	63	5.7	147	1.20	1.20	87	-0.001	0.76	0.16

BMS	317	Dam:																
BIIS	363	CE	BW	WW	YW	DMI	SC	SCF	MM	M&G	MCE	MCW	UDDR	TEAT	CW	FAT	REA	MARB
CHBS	117	4.7	2.8	36	65	-0.4	0.8	13.6	15	33	5.0	82	1.20	1.20	65	-0.021	0.48	0.05

- This heifer is a true product of John and Diane Parks dedication to the Hereford breed. U30 is the dam of Nelson Hirsche Herefords herd sire and champion Hereford bull at RAWF, Exciter.
- Nicely designed heifer, smooth as glass end to end with a shot of extra style.
- OCV



Lot 3 – Goble Parks Miss H 306G



UPS Sensation 2296 ET – Sire of Lots 4A, 5 and 6

Lot 4A – Goble Gamer 204G



SSF 901 SHES GOT GAME 265

P43684055 – Calved: 1/5/16 – Tattoo: LE J265

KJ HVH 33N REDEEM 485T ET (S00)(OLE.HYF.JEF)
 H BK CCC SR GAME CHANGER ET (CHB)(OLE.HYF.JEF.MSDF)
 P43296077 NJW 78P 63N LADYSPORT 51W ET (OLE.HYF.JEF)

SHF RADAR M326 R125 (S00)(OLE.HYF.JEF)
 HVH OKSANA 4L 33N (OLE.HYF.JEF)
 TH JWR S0P 16G 57G TUNDRA 63N (S00)(OLE.HYF.JEF)
 NJW BW LADYSPORT DEW 78P ET (OLE.HYF.JEF)

PW MOHICAN NASDAQ P316 (S00)(OLE.HYF.JEF)
 MC VICTORIA 316P W901 ET (OLE.HYF.JEF)
 P43005464 ASH LIL PEANUT 203P (OLE.HYF.JEF)

REMITALL BOOMER 46B (S00)(CHB)(OLE.HYF.JEF)
 PW VICTORIA 964 8114 (OLE.HYF.JEF)
 MOHICAN MINT 19M (OLE.HYF.JEF)
 ASH MELODY 211M (OLE.HYF.JEF)

BMSIS	369																	
BIIS	437	CE	BW	WW	YW	DMI	SC	SCF	MM	M&G	MCE	MCW	UDDR	TEAT	CW	FAT	REA	MARB
CHBS	113	-5.9	6.3	62	98	0.1	0.9	16.9	25	56	-1.4	120	1.30	1.30	72	0.008	0.63	-0.02

- An own daughter of Game Changer that came from the Jordan's in Ohio. Realy nice structured and one cow that can flat raise one. Heaviest bull calf in the sale last year and I believe she will do it again. Safe to Duke, a great combination.
- Pasture exposed May 5 to July 18, 2019, to RVP 100W Duke 31D. Safe in calf.



GOBLE GAMER 204G

P43993297 – Calved: 2/6/19 – Tattoo: RE 204G/LE BJG

CHURCHILL SENSATION 028X (S00)(OLE.HYF.JEF)
 UPS SENSATION 2296 ET (OLE.HYF.JEF.MSDF)
 43311175 UPS JT MISS NEON 7811 1ET (OLE.HYF.JEF)

UPS DOMINO 3027 (S00)(OLE.HYF.JEF.MSDF)
 CHURCHILL LADY 7202T ET (OLE.HYF.JEF)
 GH NEON 17N (S00)(CHB)(OLE.HYF.JEF.MSDF)
 LCC TWO TIMIN 438 ET (OLE.HYF.JEF)

H BK CCC SR GAME CHANGER ET (CHB)(OLE.HYF.JEF.MSDF)
 SSF 901 SHES GOT GAME 265
 P43684055 MC VICTORIA 316P W901 ET (OLE.HYF.JEF)

KJ HVH 33N REDEEM 485T ET (S00)(OLE.HYF.JEF)
 NJW 78P 63N LADYSPORT 51W ET (OLE.HYF.JEF)
 PW MOHICAN NASDAQ P316 (S00)(OLE.HYF.JEF)
 ASH LIL PEANUT 203P (OLE.HYF.JEF)

BMSIS	352																	
BIIS	426	CE	BW	WW	YW	DMI	SC	SCF	MM	M&G	MCE	MCW	UDDR	TEAT	CW	FAT	REA	MARB
CHBS	112	-5.1	6.1	66	103	0.3	0.8	15.8	27	60	-0.2	104	1.30	1.40	74	0.018	0.68	0.01

- All the talk about 2296, here is the reason! Big, stout herd sire in the making, extremely sound at the ground, really soft made, a piece that will fit in ant herd.



Lot 4 – SSF 901 Shes Got Game 265



Lot 5 – Goble Rollins Sin City 207G



DelHawk Gretchen 56B ET – Dam of Lot 5

LOT 5 BULL

GOBLE ROLLINS SIN CITY 207G

P43993301 – Calved: 2/13/19 – Tattoo: RE 207G/LE BIG

CHURCHILL SENSATION 028X (S00)(OLE.HYF.JEF)
 UPS SENSATION 2296 ET (OLE.HYF.JEF.MS0DF)
 43311175 UPS JT MISS NEON 7811 1ET (OLE.HYF.JEF)

UPS DOMINO 3027 (S00)(OLE.HYF.JEF.MS0DF)
 CHURCHILL LADY 7202T ET (OLE.HYF.JEF)
 GH NEON 17N (S00)(CHB)(OLE.HYF.JEF.MS0DF)
 LCC TWO TIMIN 438 ET (OLE.HYF.JEF)

NJW 98S R117 RIBEYE 88X ET (S00)(OLE.HYF.JEF.MS0DF)
 DELHAWK GRETCHEN 56B ET
 P43492830 TH 557E 576 BURGUNDY 33N (OLE.HYF.JEF)

SHF RIB EYE M326 R117 (S00)(OLE.HYF.JEF)
 NJW 9126J DEW DOMINO 98S (S00)(OLE.HYF.JEF)
 RU 20X BOULDER 57G (S00)
 MEGS 707B BURGUNDY 557E

BMSIS	338	BIIS	407	CE	BW	WW	YW	DMI	SC	SCF	MM	M&G	MCE	MCW	UDDR	TEAT	CW	FAT	REA	MARB
CHBS	100	5.4	1.5	52	80	0.1	0.7	15.6	28	54	4.4	73	1.30	1.50	62	0.008	0.48	0.13		

- Sin City has all the parts and pedigree to be the one! A son of the dominant sire 2296 that has owned the showing over the past few years. His dam was the high seller in our sale a few years back, an own daughter of 88X, the maternal maker. This youngster is stout made, incredible top shape and hip, balanced in phenotype with a pedigree for the ages.
- Low birth, lots of growth.

LOT 6 BULL

GOBLE STOCKER 210G

P44004122 – Calved: 2/19/19 – Tattoo: RE 210G/LE BIG

CHURCHILL SENSATION 028X (S00)(OLE.HYF.JEF)
 UPS SENSATION 2296 ET (OLE.HYF.JEF.MS0DF)
 43311175 UPS JT MISS NEON 7811 1ET (OLE.HYF.JEF)

UPS DOMINO 3027 (S00)(OLE.HYF.JEF.MS0DF)
 CHURCHILL LADY 7202T ET (OLE.HYF.JEF)
 GH NEON 17N (S00)(CHB)(OLE.HYF.JEF.MS0DF)
 LCC TWO TIMIN 438 ET (OLE.HYF.JEF)

LAKE 002 KILOWATTS 104S (OLE.HYF.JEF)
 CLF GCC STOCKLING Y212
 P43207542 CLF GCC STOCKLING W402

NS LAKES KILO 002
 TNJ VICK NIKI 9104 9207C
 STAR TRF BATTLE CHIEF 356P (OLE.HYF.JEF)
 NPH 10H MS STOCKLING 31K

BMSIS	297	BIIS	367	CE	BW	WW	YW	DMI	SC	SCF	MM	M&G	MCE	MCW	UDDR	TEAT	CW	FAT	REA	MARB
CHBS	104	-5.9	4.9	66	99	0.5	0.7	12.9	25	58	-3.3	90	1.30	1.40	73	0.008	0.58	-0.01		

- You want a youngster to add style and flash to your calves, look no further. Stocker is the one.
- Extremely long fronted, really clean in his chest floor and navel. His dam was Max's show heifer that again will never leave this farm. Just a picture of what we are looking for, type and kind, great udder and milk flow. The herd sire that will make calves with the wow factor for the showing.



Lot 6 – Goble Stocker 210G



CLF GCC Stocking Y212 – Dam of Lot 6



Lot 7 – Harvie Ms Duchess 104D



Lot 7A – Goble Totem 101G

LOT 7 COW

HARVIE MS DUCHESS 104D

P44053192 – Calved: 2/7/16 – Tattoo: RE CVIH104D

KIDMAN BLYGH D99
KANIMBLA FULL BOTTLE H117
P44016893 KANIMBLA MARITANA B06

BOWEN TORNADO Z260
KIDMAN CONSTANCE W109
GLENLEES 73J BOLD 300M ET
KANIMBLA MARITANA X13

BNMHPH 13P HEAT 101S
MHPH RCY 101S DUCHESS 110Z
P44053190 MHPH MS 533P DUCHESS ET 1291W

REMITALL PATRIOT ET 13P (SBO) (DLF,HYF,IEF)
ANL PBG 29F BONNIE 21P
STAR BRIGHT FUTURE 533P ET (SBO) (DLF,HYF,IEF)
STAR MISS AMERICA 12P (DLF,HYF,IEF)

BMI\$	280	ALIA GENEPD																
BIIS	345	CE	BW	WW	YW	DMI	SC	SCF	MM	M&G	MCE	MCW	UDDR	TEAT	CW	FAT	REA	MARB
CHBS	100	-4.3	3.5	58	88	0.3	1.1	12.1	25	54	-0.7	99	1.20	1.20	69	-0.012	0.31	0.00

- A super feminine cow with a great udder, granddaughter of Heat. Bred to Duke unlimited possibilities here.
- Pasture exposed May 5 to July 18, 2019, to RVP 100W Duke 31A. Safe in calf.



Lot 8 – CLF GCC Lady K D215

LOT 8 COW

CLF GCC LADY K D215

P43665564 – Calved: 2/13/16 – Tattoo: RE CLF/LE D215

NS LAKES KILO 002
LAKE 002 KILOWATTS 104S (DLF,HYF,IEF)
P42698463 TNJ VICK NIKI 9104 9207C

JSF 37 271 DEVO 23C (SBO)
GK APOLLONIA 834Z
PW NICK 9104 (SBO)
TNJ DETERMINATE 156 17F

PW VICTOR BOOMER P606 (SBO) (DLF,HYF,IEF)
GOBLE WESTERN LIGHT
P43489525 STAR MKS WESTERN PEACH 133R ET (DLF,HYF,IEF)

REMITALL BOOMER 46B (SBO) (CHB) (DLF,HYF,IEF)
PW VICTORIA 964 8114 (DLF,HYF,IEF)
REMITALL ONLINE 122L (SBO) (CHB) (DLF,HYF,IEF)
STAR MKS STARLENA SS 165M

BMI\$	349																		
BIIS	417	CE	BW	WW	YW	DMI	SC	SCF	MM	M&G	MCE	MCW	UDDR	TEAT	CW	FAT	REA	MARB	
CHBS	95	-2.9	3.0	56	81	0.3	1.1	16.9	24	52	-3.9	82	1.30	1.30	64	-0.012	0.45	0.04	

- This cow comes from 20 plus years of breeding Herefords. The bull that did so much for us.
- Kilowatts, I wish we still had him today, you could breed him to anything and the resulting calf was an improvement on the cow. Her dam was the planned mating of P606 and Peaches.
- This cow has it all, phenotype and pedigree. A true testament to what we love!
- Pasture exposed May 5 to July 18, 2019, to RVP 100W Duke 31A.
- OCV
- Lot 8A: Steer 601G, calved June 24, 2019 sired by Goble MHPH Little Bass 301C.

LOT 7A BULL

GOBLE TOTEM 101G

P44053792 – Calved: 1/20/19 – Tattoo: RE 101G/LE BJG

CHURCHILL RED BULL 200Z (CHB) (DLF,HYF,IEF,MSDF)
HAROLDSONS TOTEM 200Z 5D
P44053707 BLAIR'S NELLIE R117 ET 5B

CHURCHILL SENSATION 028X (SBO) (DLF,HYF,IEF)
CHURCHILL LADY 002X ET (DLF,HYF,IEF,MSDF)
SHF RIB EYE M326 R117 (SBO) (DLF,HYF,IEF)
NCX MISS JR NELLIE 528N (DLF,HYF,IEF,MSDF)

KANIMBLA FULL BOTTLE H117
HARVIE MS DUCHESS 104D
P44053192 MHPH RCY 101S DUCHESS 110Z

KIDMAN BLYGH D99
KANIMBLA MARITANA B06
BNMHPH 13P HEAT 101S
MHPH MS 533P DUCHESS ET 1291W

BMI\$	366																		
BIIS	439	CE	BW	WW	YW	DMI	SC	SCF	MM	M&G	MCE	MCW	UDDR	TEAT	CW	FAT	REA	MARB	
CHBS	109	-1.3	3.4	58	92	0.1	1.1	17.2	24	53	0.2	91	1.30	1.30	66	-0.037	0.40	0.10	

- Here is the Canadian bred son of Medonte's herd sire Totem. You cannot mark them any better than this, lots of growth, easy calving, help yourself.



Lake 002 Kilowatts 104S

LOT 9 SEMEN

LAKE 002 KILOWATTS 104S {DLF,HYF,IEF}

P42698463 – Calved: 1/24/06 – Tattoo: LE 104S/RE LAKE

JSF 37 271 DEVO 23C (SBO)
NS LAKES KILO 002
P42049996 GK APOLLONIA 834Z

RLOA R271 DYNASTY ET 37U
JSF 183 VICTORIA 7A
GK APOLLO OF FL 1ET
GK DYNA GIRL 849T

PW NICK 9104 (SBO)
TNJ VICK NIKI 9104 9207C
P41144846 TNJ DETERMINATE 156 17F

JR NICK THE BUTLER P183 (SBO) (HYF)
PW VICTORIA F243 26I
LJR EXPRESS 223Y
LJR ANNETTE 60Z (SBO)

BMI\$	277																		
BIIS	338	CE	BW	WW	YW	DMI	SC	SCF	MM	M&G	MCE	MCW	UDDR	TEAT	CW	FAT	REA	MARB	
CHBS	91	-4.6	2.4	61	87	0.5	0.9	13.0	17	48	-11.3	90	1.20	1.20	66	-0.031	0.31	-0.10	

- Selling 5 (five) straws of semen



Lot 10 – ELM-LODGE Tay Down Essence 19E



ELM-LODGE TAY DOWN ESSENCE 19E

P43897948 – Calved: 1/25/17 – Tattoo: RE TAX 19E

R LEADER 6964 (CHB)(OLF,HYF,REF,MSUDF)
P43500058 R MISS REVOLUTION 1009 (DOB)(OLF,HYF,REF)

SCHU-LAR ON TARGET 22S (SDD)(CHB)(OLF,HYF,REF,MSUDF)
HYALITE TS LASS 310 (OLF,HYF,REF)
MSU TCF REVOLUTION 4R (SDD)(CHB)(OLF,HYF,REF)
R MISS WRANGLER 3007

ELM-LODGE X-MAN 18X
ELM-LODGE CATWOMAN 50C
P43897944 PED 201P SITTING PRETTY 45S

SHF RIB EYE M326 R117 (SDD)(OLF,HYF,REF)
ELM-LODGE 25H PASSION 19P
ELM-LODGE PETERBOROUGH 7P
PED 7M PRETTY 119P

BMSIS	373																	
BIIS	464	CE	BW	WW	YW	DMI	SC	SCF	MM	M&G	MCE	MCW	UDDR	TEAT	CW	FAT	REA	MARB
CHBS	117	2.6	5.0	75	119	0.5	1.4	17.2	23	61	1.9	113	0.90	0.90	80	0.028	0.49	0.08

- Well, Essence only wore leather a couple times and was never beaten. Reserve Champion Female at the Royal Winter Fair as a calf. An own daughter of Leader, the maternal maker.
- Super long bodied, sharp fronted. Big future for this young 2-year-old.
- Pasture exposed May 5 to July 18, 2019, to RVP 100W Duke 31A. Safe in calf.



GOBLE MISS ESS 209G

P44046288 – Calved: 2/18/19 – Tattoo: RE 209G/LE BJG

LAKE 002 KILOWATTS 104S (OLF,HYF,REF)
P42698463 TNJ VICK NIKI 9104 9207C

R LEADER 6964 (CHB)(OLF,HYF,REF,MSUDF)
ELM-LODGE TAY DOWN ESSENCE 19E
P43897948 ELM-LODGE CATWOMAN 50C

NS LAKES KILO 002
JSF 37271 DEVO 23C (SDD)
GK APOLLONIA 834Z
PW NICK 9104 (SDD)
TNJ DETERMINATE 156 17F

HYALITE ON TARGET 936 (SDD)(CHB)(OLF,HYF,REF,MSUDF)
R MISS REVOLUTION 1009 (DOB)(OLF,HYF,REF)
ELM-LODGE X-MAN 18X
PED 201P SITTING PRETTY 45S

BMSIS	322																		
BIIS	397	CE	BW	WW	YW	DMI	SC	SCF	MM	M&G	MCE	MCW	UDDR	TEAT	CW	FAT	REA	MARB	
CHBS	101	-0.8	3.3	67	102	0.7	1.1	15.1	20	54	-4.8	101	1.10	1.00	73	-0.002	0.40	0.00	

- Flash! If you are coming to find the show heifer, this might be the one! Loaded with style and chrome if you will. The judge will find you and find you fast! Extended through her front end.
- Phenotype this good I haven't seen in a long time. A daughter of Kilowatts, as you all know, I think he was the bull. Ess will be a true force in any showing at any level.
- OCV



Lot 10A – Goble Miss Ess 209G



Lot 10 – ELM-LODGE Tay Down Essence 19E

Ridgeview Farm • 11554 100th Street • Alto MI 49302 • Bob's cell: 616-299-8681 • jami@ridgeviewfarm-goble.com



Lot 11 – AXA 106A Tina 103C



AXA 106A TINA 103C

P44053895 – Calved: 1/11/15 – Tattoo: RE AXA/LE 103

TH 122 711 VICTOR 521X ET (OLE,RYF,JEF)
 MHPH 521X ACTION 106A (OLE,RYF,JEF,MSUDF)
 P43439334 MHPH 301W DAINTY 205Y

DRF JWR PRINCE VICTOR 711 (S00)(OLE,RYF,JEF,MSUDF)
 KBCR 19D DOMINETTE 122 (OLE,JEF)
 MHPH 102S WYATT 301W
 MHPH MS 101S DAINTY 123U

HARVIE TRAVELER 69T
 AXA 69T TINA 113Y
 P44053891 AXA 4L TINA 201T

KAIRURU ABERDEEN 03 0047
 HARVIE PEARL 129P
 HARVIE LADIES MAN 4L (S00)
 AXA KB 18H MARIE 108M

BMI\$	284																	
BIIS	348	CE	BW	WW	YW	DMI	SC	SCF	MM	M&G	MCE	MCW	UDDR	TEAT	CW	FAT	REA	MARB
CHBS	95	-0.3	3.9	61	96	0.7	0.7	13.1	21	51	3.2	93	1.20	1.20	67	-0.032	0.43	-0.06

- A big powerful Action daughter, mated to Duke, endless possibilities.
- Pasture exposed May 10 to July 18, 2019, to RVP 100W Duke 31A. Safe in calf.



Lot 11A – Goble Tinley 304G



GOBLE TINLEY 304G

P44053906 – Calved: 3/9/19 – Tattoo: RE 304G/LE BJG

LAKE 002 KILOWATTS 104S (OLE,RYF,JEF)
 GCC JPF LBB ENTICER A117 (OLE,RYF,JEF)
 P43357507 JPF K01 MS EMBRACE U11

NS LAKES KILO 002
 TNJ VICK NIKI 9104 9207C
 STAR TRF 8006 EMBRACER 229 ET
 JPF 315 DREAM K01

MHPH 521X ACTION 106A (OLE,RYF,JEF,MSUDF)
 AXA 106A TINA 103C
 P44053895 AXA 69T TINA 113Y

TH 122 711 VICTOR 521X ET (OLE,RYF,JEF)
 MHPH 301W DAINTY 205Y
 HARVIE TRAVELER 69T
 AXA 4L TINA 201T

BMI\$	274																	
BIIS	339	CE	BW	WW	YW	DMI	SC	SCF	MM	M&G	MCE	MCW	UDDR	TEAT	CW	FAT	REA	MARB
CHBS	97	-0.9	3.9	62	93	0.6	0.8	12.2	16	47	-0.8	90	1.25	1.15	68	-0.032	0.47	-0.04

- A real fancy Enticer daughter. Herd sire for Lamb Brothers. Red-eyed maternal female with a big future.
- OCV



Lot 12 – BPH 352 Trust Right Kathy 601D



BPH 352 TRUST RIGHT KATHY 601D

P43697021 – Calved: 1/29/16 – Tattoo: BE 601D

NS LAKES KILO 002
 RB 29F 002 RIGHT NOW 630S
 P42701674 PSB LADY BOOMER KLONDIKE 340N

JSF 37 271 DEVO 23C (S00)
 GK APOLLONIA 834Z
 CS BOOMER 29F (S00)(OLE,RYF,JEF)
 KFF TARZAN'S PRIDE 954

NJW 73S M326 TRUST 100W ET (S00)(CHB)(OLE,RYF,JEF,MSUDF)
 BPH 648S TRUST KATHERINE 352A (S00)
 P43380460 LAKE RB 0030 KEEPSAKE KAY 648S (S00)

KCF BENNETT 3008 M326 (S00)(OLE,RYF,JEF)
 NJW P606 72N DAYDREAM 73S (OLE,RYF,JEF,MSUDF)
 RW LPH TOTAL PACKAGE 19D 0030 (S00)
 BAR B 324 KEEPSAKE 701

BMI\$	297																	
BIIS	362	CE	BW	WW	YW	DMI	SC	SCF	MM	M&G	MCE	MCW	UDDR	TEAT	CW	FAT	REA	MARB
CHBS	108	1.2	3.6	60	93	0.4	0.8	12.7	27	57	1.7	125	1.30	1.20	73	-0.022	0.45	-0.02

- Right Now daughter that has a stacked pedigree, Trust, Kilo, Total Package, Bred Duke, Cool!
- Pasture exposed May 5 to July 18, 2019, to RVP 100W Duke 31A.



RVP 100W Duke 31D – Featured sire



GOBLE MISS KATHY 409G

P44046290 – Calved: 4/21/19 – Tattoo: RE 409G/LE BJG

GCC JPF LBB ENTICER A117 (OLE,RYF,JEF)
 GOBLE MHPH LITTLE BASS 301C (OLE,RYF,JEF,MSUDF)
 P43605065 MHPH 521X DAINTY 105A

LAKE 002 KILOWATTS 104S (OLE,RYF,JEF)
 JPF K01 MS EMBRACE U11
 TH 122 711 VICTOR 521X ET (OLE,RYF,JEF)
 MHPH MS 101S DAINTY 123U

RB 29F 002 RIGHT NOW 630S
 BPH 352 TRUST RIGHT KATHY 601D
 P43697021 BPH 648S TRUST KATHERINE 352A (S00)

NS LAKES KILO 002
 PSB LADY BOOMER KLONDIKE 340N
 NJW 73S M326 TRUST 100W ET (S00)(CHB)(OLE,RYF,JEF,MSUDF)
 LAKE RB 0030 KEEPSAKE KAY 648S (S00)

BMI\$	291																	
BIIS	359	CE	BW	WW	YW	DMI	SC	SCF	MM	M&G	MCE	MCW	UDDR	TEAT	CW	FAT	REA	MARB
CHBS	105	1.3	3.2	63	94	0.5	0.8	12.5	23	55	0.5	113	1.30	1.20	73	-0.022	0.51	-0.01

- Take a long look at this one different age and division. Give her some time I think she has a lot of potential. Lil Bass daughter will make great cows.
- OCV



Lot 13 – ESF 3074 B19 Summer

**LOT 13
COW**

ESF 3074 B19 SUMMER

P43931576 – Calved: 5/28/18 – Tattoo: RE ESF/LE F381

NJW 73S M326 TRUST 100W ET (S00)(CHB)(OLE.HVF.JEF.MS0P)
 ROPF BET ON TRUST 100W B19 (OLE.HVF.JEF)
 P43460661 K-L LASSIE JOYFUL P12 (OLE.HVF.JEF)

KCF BENNETT 3008 M326 (S00)(OLE.HVF.JEF)
 NJW P606 72N DAYDREAM 73S (OLE.HVF.JEF.MS0P)
 DUNWALKE JOYFUL 430D813H
 K-L MISS ENDURANCE 755 J33 (000)

STAR SHOCK WAVE 13Y ET (OLE.HVF.JEF)
 CHF PRINCESS 3074 ET
 P43408866 GLENVIEWS 6056 VICKY U37 (OLE.HVF.JEF)

STAR TCF SHOCK & AWE 158W ET (OLE.HVF.JEF)
 STAR 2013 CARA 112T (OLE.HVF.JEF)
 THM SOLUTION 6056
 GLENVIEW N1 PRINCESS 86S

BMSI	364																	
BIIS	424	CE	BW	WW	YW	DMI	SC	SCF	MM	M&G	MCE	MCW	UDDR	TEAT	CW	FAT	REA	MARB
CHBS	105	2.7	2.3	47	74	-0.1	0.7	17.2	26	49	2.7	97	1.10	1.10	63	-0.002	0.39	0.05

- Look here... this is probably the heifer we should have showed this year. Really nicely designed female, soft made through the center part of her body. Low birth weight, with a power packed pedigree. If you're looking for a fall calver this would be a really good investment.
- Dam sells as Lot 14.
- She sells open ready to breed for fall.

**LOT 14
COW**

CHF PRINCESS 3074 ET

P43408866 – Calved: 3/25/13 – Tattoo: LE 3074

STAR TCF SHOCK & AWE 158W ET (OLE.HVF.JEF)
 STAR SHOCK WAVE 13Y ET (OLE.HVF.JEF)
 P43167474 STAR 2013 CARA 112T (OLE.HVF.JEF)

STAR BRIGHT FUTURE 533P ET (S00)(OLE.HVF.JEF)
 MSU APOLLONIA 10M (OLE.HVF.JEF)
 HB STAR BATTLE GROUND 2013 (OLE.HVF.JEF)
 SPIRIDGE KARA 17N

THM SOLUTION 6056
 GLENVIEWS 6056 VICKY U37 (OLE.HVF.JEF)
 P42917897 GLENVIEW N1 PRINCESS 86S

THM DURANGO 4037 (S00)(OLE.HVF.JEF)
 THM 8027 VICKY 1026
 GLENVIEW PRINCE DOMINO N1
 GLENVIEW 1827 BELLE P10

BMSI	323																	
BIIS	370	CE	BW	WW	YW	DMI	SC	SCF	MM	M&G	MCE	MCW	UDDR	TEAT	CW	FAT	REA	MARB
CHBS	97	-1.7	2.3	46	68	-0.1	0.4	15.4	26	49	-2.9	88	1.20	1.20	62	-0.002	0.40	-0.11

- To no fault of her own we decided to hold this cow over to make her a spring calver. Tremendously low birth weight, with a maternal pedigree. Just look at the job she did with Summer. Mated to Duke for early spring. Don't miss this one!
- QCY
- Pasture exposed May 5 to July 18, 2019, to RVP 100W Duke 31A. Safe in calf.



Lot 14 – CHF Princess 3074 ET



Lot 15 – Goble Miss G 319F



CLF GCC Gayle C403

LOT 15 COW

GOBLE MISS G 319F

P43941144 – Calved: 3/20/18 – Tattoo: RE BJG/LE 319F

GCC JPF LBB ENTICER A117 (OLE.HYF.JEF)
GOBLE MHPH LITTLE BASS 301C (OLE.HYF.JEF.MSDDF)
P43605065 MHPH 521X DAINTY 105A

LAKE 002 KILOWATTS 104S (OLE.HYF.JEF)
JPF K01 MS EMBRACE U11
TH 122 771 VICTOR 521X ET (OLE.HYF.JEF)
MHPH MS 101S DAINTY 123U

STAR BRITE EXPECTATIONS 33Y ET (OLE.HYF.JEF)
CLF GCC GAYLE C403
P43605076 STAR 19D GAYLE 39N

STAR BRIGHT FUTURE 533P ET (SDD)(OLE.HYF.JEF)
STAR MISS AMERICA 12P (OLE.HYF.JEF)
NJW 1Y WRANGLER 19D (SDD)(OLE.HYF.JEF)
PCR BOOMER GAYLE 157L

BMSIS	265																	
BIIS	327	CE	BW	WW	YW	DMI	SC	SCF	MM	M&G	MCE	MCW	UDDR	TEAT	CW	FAT	REA	MARB
CHBS	102	0.5	3.0	54	86	0.2	0.8	10.9	20	47	1.5	94	1.20	1.20	64	-0.012	0.41	0.04

- A female that just exemplifies the meaning of femininity, super long necked, long bodied with all the cosmetics to go with her. Bred to our up and coming herd sire, Conquest. Conquest is a sound and stout made Duke son out of what some would say is the best cow to ever walk the pastures at Ridgeview. She will be definitely be a front pasture cow next summer if she's not being shown as a pair.
- OCV
- Pasture exposed May 10 to August 31, 2019, to Goble Conquest 317F (P43938562). Safe in calf.



Lot 16 – MKS 2214 24B Maria 14D ET, as a heifer calf



STAR KKH SSF Olivia 15U ET – Maternal grandam of Lot 16

LOT 16 COW

MKS 2214 24B MARIA 14D ET

P43771622 – Calved: 10/10/16 – Tattoo: RE MKS/LE 14D

CRR ABOUT TIME 743 (SDD)(OLE.HYF.JEF)
CHAC MASON 2214 (CHB)(OLE.HYF.JEF)
P43303660 GKB 31 GRACE 7100 (OLE.HYF.JEF)

THM DURANGO 4037 (SDD)(OLE.HYF.JEF)
CRR D03 CASSIE 206 (OLE.HYF.JEF)
CCLC GKB PURE GOLD 31
L STAR GOLDIE P153

MSU TCF REVOLUTION 4R (SDD)(CHB)(OLE.HYF.JEF)
MKS 4R 15U BALLERINA 24B ET (OLE.HYF.JEF.MSDDF)
P43510369 STAR KKH SSF OLIVIA 15U ET (OLE.HYF.JEF)

FELTONS LEGEND 242 (SDD)(HYF)
MSU TCF RACHAEL ET 54N (OLE.HYF.JEF)
REMITALL ONLINE 122L (SDD)(CHB)(OLE.HYF.JEF)
SSF KEYSHA 949 (OLE.HYF.JEF)

BMSIS	375																	
BIIS	439	CE	BW	WW	YW	DMI	SC	SCF	MM	M&G	MCE	MCW	UDDR	TEAT	CW	FAT	REA	MARB
CHBS	124	-0.6	5.5	58	98	0.5	0.9	17.0	24	53	2.9	110	1.10	1.10	83	0.008	0.82	-0.02

- Maria is sired by, the Champion of the World bull, Chac Mason 2214 and her dam, MKS 4R 15U Ballerina 24B, and grandam, STAR Olivia 15U, need no introduction as both are "Power Cows." Super fronted, long bodied, square hipped and stout made will allow for many future breeding options. Take note that she ranks in the top 1% for REA and top 3% for CHB. She's got a great "look" and a pedigree to match.
- Maria was shown successfully by Miranda Stotz and a full sister is now seeing show ring purple for the Cherry family in Iowa. Her first calf was a fall bull that we are retaining and decided to move her to a spring calving schedule.
- Safe in calf to AI on March 24, 2019 to NJW 73S W18 Hometown 10Y.
- Co-owned with MKS Ranch, Skiatook, Okla.



MKS 4R 15U Ballerina 24B – Dam of Lot 16



Lot 17 – Goble Dizzie 503F



GOBLE DIZZIE 503F

43938545 – Calved: 5/15/18 – Tattoo: RE BJG/LE 503F

NJW 73S M326 TRUST 100W ET (SOD)(CHB)(OLE,HVF,REF,MSDP)
 RVP 100W DUKE 31D (OLE,HVF,REF,MSDP)
 P43769388 SRF AFFECTION 138A

KCF BENNETT 3008 M326 (SOD)(OLE,HVF,REF)
 NJW P606 72N DAYDREAM 73S (OLE,HVF,REF,MSDP)
 MSU TCF REVOLUTION 4R (SOD)(CHB)(OLE,HVF,REF)
 BYEVISTA 138 WARDEN 138Y

LAKE 002 KILOWATTS 104S (OLE,HVF,REF)
 GOBLE LIZZIE 355Z
 P43338941 ONLINE CYRUS 12 ET

NS LAKES KILO 002
 TNJ VICK NIKI 9104 9207C
 TFR CYRUS 225 ET (OLE,HVF,REF)
 LADY ONLINE 006 ET (OLE,REF)

BMIS	356																	
BIIS	428	CE	BW	WW	YW	DMI	SC	SCF	MM	M&G	MCE	MCW	UDDR	TEAT	CW	FAT	REA	MARB
CHBS	123	-0.9	2.5	60	100	0.4	1.0	15.5	23	53	-0.4	125	1.10	1.10	79	-0.022	0.60	0.08

- Here we have Dizzie, she was in the show barn early this year, but due to lack of time she never made her debut. This heifer is loaded with eye appeal, long attractive front, with that stoutness breeders are demanding in the Hereford breed. She has the pedigree to match, she goes back to one of Joan Cutlers great cows that just never misses.
- Pasture exposed May 10 to August 31, 2019, to Goble Conquest 317F. Safe in calf.
- OCV



RVP 100W Duke 31D – Sire of Lot 17



Goble Lizzie 355Z – Dam of Lot 17



Lot 18A – Goble Yassi 301G

LOT 18 COW

MHPH 101S YASMIN 1042A

P43607853 – Calved: 1/4/13 – Tattoo: RE MHPH/LE 1042A

REMITALL PATRIOT ET 13P (S00)(CHB)(OLE,HVE,IEF)
 BNMHPH 13P HEAT 101S
 P42823811 ANL PBG 29F BONNIE 21P

REMITALL OLYMPIAN ET 262L (OLE,HVE,IEF)
 REMITALL GINGER 23G (OLE,HVE,IEF)
 CS BOOMER 29F (S00)(OLE,HVE,IEF)
 SVR 75A BANNER GIRL 545G

CRR ABOUT TIME 743 (S00)(OLE,HVE,IEF)
 ELM-LODGE YASMIN 3Y
 P43607335 SHADY-BIRCH WATERLILY 1W

THM DURANGO 4037 (S00)(OLE,HVE,IEF)
 CRR D03 CASSIE 20G (OLE,HVE,IEF)
 FHF 8403 STARBUCK 19H (S00)
 ELM-LODGE 28L RHYME 65R

BMS	448																	
BIIS	510	CE	BW	WW	YW	DMI	SC	SCF	MM	M&G	MCE	MCW	UDDR	TEAT	CW	FAT	REA	MARB
CHBS	100	-3.6	3.7	47	73	-0.3	0.7	23.5	13	37	2.7	85	1.20	1.20	58	-0.022	0.34	0.01

- An own daughter of Heat. He has written so much history in Canada, making some of the most beautiful females you will ever lay eyes on. Mated to Duke for 2020. Get the halter ready this could be big!
- Pasture exposed May 10 to July 18, 2019, to RVP 100W Duke 31D.

LOT 18A COW

GOBLE YASSI 301G

P44046564 – Calved: 3/1/19 – Tattoo: RE 301G/LE BJG

HH ADVANCE 4075B ET (OLE,HVE,IEF,MSUDF)
 H FHF ADVANCE 624 ET (OLE,HVE,IEF,MSUDF)
 P43725904 FHF 408 RITA 21W (OLE,HVE,IEF,MSUDF)

HH ADVANCE 1013Y ET (OLE,HVE,IEF)
 HH MISS ADVANCE 0121X (OLE,HVE,IEF)
 CJH HARLAND 408 (S00)(OLE,HVE,IEF,MSUDF)
 FHF 45P RITA 101T

BNMHPH 13P HEAT 101S
 MHPH 101S YASMIN 1042A
 P43607853 ELM-LODGE YASMIN 3Y

REMITALL PATRIOT ET 13P (S00)(CHB)(OLE,HVE,IEF)
 ANL PBG 29F BONNIE 21P
 CRR ABOUT TIME 743 (S00)(OLE,HVE,IEF)
 SHADY-BIRCH WATERLILY 1W

BMS	396																	
BIIS	472	CE	BW	WW	YW	DMI	SC	SCF	MM	M&G	MCE	MCW	UDDR	TEAT	CW	FAT	REA	MARB
CHBS	107	-1.8	3.8	57	86	0.3	0.5	19.1	17	45	1.2	108	1.30	1.20	74	0.008	0.48	0.13

- A real long structured individual that has that cow look and all the cosmetics to match. Sire was Lambs pick of the bulls from Hoffmans. If you're looking for a real easy-going heifer that will flat get it done, look no further.
- OCV



Lot 18 – MHPH 101S Yasmin 1042A

LANDRUM FAMILY FARMS

1412 W. 900 S. • Warren, IN 46792
 Thatcher 260-917-0177
 Joe 260-466-8149
 Jane 260-917-0036



Landrum Family Farms • 1412 W. 900 S. • Warren IN 46792 • Thatcher 260-917-0177 • Joe 260-466-8149 • Jane 260-917-0036



Lot 19 – LFF Queen Entice 1622 1820



LFF QUEEN ENTICE 1622 1820

P43925808 – Calved: 3/13/18 – Tattoo: LE 1820

GCC JPF LBB ENTICER A117 (OLE.HVF.JEF)
 CLF GCC ENTICE C309 (OLE.HVF.JEF.MSDOF)
 P43605073 GRASSY RUN RACHEL 1012

LAKE 002 KILOWATTS 104S (OLE.HVF.JEF)
 JPF K01 MS EMBRACE U11
 MSU TCF REVOLUTION 4R (S08)(CHB)(OLE.HVF.JEF)
 GRASSY 837S RACHEL G33

GCC JPF EXCITER A222 (OLE.HVF.JEF)
 LFF MISS MIMI 1622
 P43694662 PRR MRK MIMI 123B (OLE.HVF.JEF.MSDOF)

LAKE 002 KILOWATTS 104S (OLE.HVF.JEF)
 JPF K01 HONEY U30
 LAKE 002 KILOWATTS 104S (OLE.HVF.JEF)
 PRR RMK FLOWER GIRL 123Z

BMS	311																	
BIIS	376	CE	BW	WW	YW	DMI	SC	SCF	MM	M&G	MCE	MCW	UDDR	TEAT	CW	FAT	REA	MARB
CHBS	104	-2.0	4.2	60	92	0.4	0.9	14.2	18	47	-2.2	93	1.30	1.20	71	-0.022	0.47	-0.02

- This line bred Kilowatts is a beautiful cow prospect. She has a great disposition, was shown successfully and bred AI on the first service.
- Bred AI May 21, 2019, to Boyd 17Y XZ5 Ft Knox 4040. Safe to AI date.



Lot 20 – LFF Lilybean 1902

LOT 20 COW

LFF LILYBEAN 1902

P44010212 – Calved: 1/17/19 – Tattoo: LE 1902

SHF WONDER M326 W18 ET (CMB) (OLE.NYF.JEF)
 NJW 73S W18 HOMEGROWN 8Y ET (OLE.NYF.JEF.MSUDF)
 P43214852 NJW P606 72N DAYDREAM 73S (OLE.NYF.JEF.MSUDF)

KCF BENNETT 3008 M326 (SBD) (OLE.NYF.JEF)
 SHF GOVERNESS 2366 L37 (OLE.NYF.JEF)
 PW VICTOR BOOMER P606 (SBD) (OLE.NYF.JEF)
 NJW 94J DEW 72N (OLE.NYF.JEF)

BHR 2T BARB WIRE 924 ET
 924 MISS LILY 1216
 P43326903 BOOT HILL BELL 884

MSU TCF TITLEIST 2T ET (OLE.NYF.JEF)
 STAR OKALANI BARBIE 524P (OLE.NYF.JEF)
 MOHICAN ROUGHOUT 428R ET (OLE.NYF.JEF)
 BOOT HILL MISS BELLE 530

BMS	279																	
BIIS	348	CE	BW	WW	YW	DMI	SC	SCF	MM	M&G	MCE	MCW	UDDR	TEAT	CW	FAT	REA	MARB
CHBS	109	-2.5	5.0	62	104	0.5	1.2	11.2	34	65	1.5	108	1.10	1.10	73	0.018	0.58	0.03

- OCV
- Halter broke
- It is very difficult to sell this one. She is out of one of our best cows and will make a productive, front pasture female herself.
- She is dark red, broody, easy fleshing and very high quality.



924 Miss Lily 1216 – Dam of Lot 20



NJW 73S W18 Homegrown 8Y – Sire of Lots 20 and 21A



Lot 21A – LFF 8Y 1524 Miss Hometown



MISS TJL HOMEGROWN 1524

P43650862 – Calved: 3/19/15 – Tattoo: LE 1524

RVP STAR 533P CAN-AM ET 57U (OLE,HYF,JEF)
 GOBLE HOMEGROWN 213X
 P43079379 SRM MISS LILLIE 736 (OLE,HYF,JEF)

STAR BRIGHT FUTURE 533P ET (SDD)(OLE,HYF,JEF)
 STAR BONNIE BETH 54N
 STAR ORLANDO 561P ET
 OXH LILA 7014

STAR NK PLATINUM 508T ET (OLE,HYF,JEF)
 TJL 508T DESIRE 1105
 P43232696 ANL BP 3D RH DESIRE 57S

REMITALL ONLINE 122L (SDD)(CHB)(OLE,HYF,JEF)
 STAR TRF GLITTER 5M (OLE,HYF,JEF)
 ALLENDALE ROBIN HOOD (SDD)(OLE,HYF,JEF)
 CIRCLE-D 137K DESIRE 46P

BMSI	267																	
BIIS	324	CE	BW	WW	YW	DMI	SC	SCF	MM	M&G	MCE	MCW	UDDR	TEAT	CW	FAT	REA	MARB
CHBS	101	-4.7	4.8	51	83	-0.1	0.7	11.3	19	44	-3.4	81	1.10	1.20	62	-0.002	0.32	0.00

- A very productive female that flat out produces herself. Study her heifer calf closely as she is mated back the same way.
- Bred AI April 18, 2019, to NJW 73S W18 Homegrown 8Y ET. Safe to AI date.



LFF 8Y 1524 MIIS HOMETOWN

P44010223 – Calved: 1/25/19 – Tattoo: LE 1906

SHF WONDER M326 W18 ET (CHB)(OLE,HYF,JEF)
 NJW 73S W18 HOMEGROWN 8Y ET (OLE,HYF,JEF,MSDDF)
 P43214852 NJW P606 72N DAYDREAM 73S (OLE,HYF,JEF,MSDDF)

KCF BENNETT 3008 M326 (SDD)(OLE,HYF,JEF)
 SHF GOVERNESS 2366 L37 (OLE,HYF,JEF)
 PW VICTOR BOOMER P606 (SDD)(OLE,HYF,JEF)
 NJW 94J DEW 72N (OLE,HYF,JEF)

GOBLE HOMEGROWN 213X
 MISS TJL HOMEGROWN 1524
 P43650862 TJL 508T DESIRE 1105

RVP STAR 533P CAN-AM ET 57U (OLE,HYF,JEF)
 SRM MISS LILLIE 736 (OLE,HYF,JEF)
 STAR NK PLATINUM 508T ET (OLE,HYF,JEF)
 ANL BP 3D RH DESIRE 57S

BMSI	289																	
BIIS	352	CE	BW	WW	YW	DMI	SC	SCF	MM	M&G	MCE	MCW	UDDR	TEAT	CW	FAT	REA	MARB
CHBS	103	0.0	3.4	53	88	0.2	1.1	12.3	32	59	-0.4	94	1.10	1.20	66	0.018	0.43	0.05

- OCV
- Halter broke
- Another super Homegrown 8Y cow prospect. The 8Y daughters are some of the very best cows in the famed Ned and Jan Ward herd in Wyoming.
- This girl will be a valuable addition to anyone's herd.



Lot 21 – Miss TJL Homegrown 1524



NJW P606 72N Daydream 73S – Dam of Trust 100W, 8Y and 10Y



NJW 73S W18 Hometown 10Y ET – Sire of Lot 22

Lot 22 – LFF 4023 10Y Down Home 1904

LOT 22 BULL

LFF 4023 10Y DOWN HOME 1904

P44010220 – Calved: 1/19/19 – Tattoo: LE 1904

SHF WONDER M326 W18 ET (CHB)(OLE,HYF,REF)
 NJW 73S W18 HOMETOWN 10Y ET (S00)(CHB)(OLE,HYF,REF,MSUDF)
 P43214853 NJW P606 72N DAYDREAM 73S (OLE,HYF,REF,MSUDF)

KCF BENNETT 3008 M326 (S00)(OLE,HYF,REF)
 SHF GOVERNESS 236G L37 (OLE,HYF,REF)
 PW VICTOR BOOMER P606 (S00)(OLE,HYF,REF)
 NJW 94J DEW 72N (OLE,HYF,REF)

NJW 73S M326 TRUST 100W ET (S00)(CHB)(OLE,HYF,REF,MSUDF)
 GRASSY RUN CHARITY 4023
 P43523279 GMF MS GINNY Y121

KCF BENNETT 3008 M326 (S00)(OLE,HYF,REF)
 NJW P606 72N DAYDREAM 73S (OLE,HYF,REF,MSUDF)
 STAR BSP ROXS GUNNER 22T ET (OLE,HYF,REF)
 H MISS 8E CHARITY 8066

BMSIS	376																	
BIIS	455	CE	BW	WW	YW	DMI	SC	SCF	MM	M&G	MCE	MCW	UDDR	TEAT	CW	FAT	REA	MARB
CHBS	118	6.8	2.1	54	94	0.4	1.2	16.7	32	59	1.0	119	1.30	1.30	76	0.018	0.55	0.24

- Halter broke
- This stylish son of the popular Hometown 10Y is loaded with pigment. He will add that popular dark color and quality to his offspring.
- He is linebred to the popular NJW donor Daydream 73S.

LOT 23 BULL

LFF MR PRINT BP 6153 3C 1903

P44010218 – Calved: 1/17/19 – Tattoo: LE 1903

R LEADER 6964 (CHB)(OLE,HYF,REF,MSUDF)
 BOYD 31Z BLUEPRINT 6153 (OLE,HYF,REF,MSUDF)
 P43764491 NJW 91H 100W RITA 31Z ET (OLE,HYF,REF)

HYALITE ON TARGET 936 (S00)(CHB)(OLE,HYF,REF,MSUDF)
 R MISS REVOLUTION 1009 (S00)(OLE,HYF,REF)
 NJW 73S M326 TRUST 100W ET (S00)(CHB)(OLE,HYF,REF,MSUDF)
 REMITALL RITA 91H (OLE,HYF,REF)

MSU TCF REVOLUTION 4R (S00)(CHB)(OLE,HYF,REF)
 FSL LADY REV 4R 39R 3C
 P43580326 FSL LADY P606 39R (OLE,HYF,REF)

FELTONS LEGEND 242 (S00)(HYF)
 MSU TCF RACHAEL ET 54N (OLE,HYF,REF)
 PW VICTOR BOOMER P606 (S00)(OLE,HYF,REF)
 FSL MISS SARAH 65H 35N

BMSIS	429																	
BIIS	515	CE	BW	WW	YW	DMI	SC	SCF	MM	M&G	MCE	MCW	UDDR	TEAT	CW	FAT	REA	MARB
CHBS	110	1.2	4.0	62	103	0.5	1.2	21.1	26	57	1.9	99	1.30	1.30	75	0.038	0.60	0.17

- Halter broke
- One of the first sons of the \$105,000 Genex sire Blueprint to sell in this area.
- He is high performing and is out of the super productive Flat Stone Lick Farms dam.



Boyd 31Z Blueprint 6153 – Sire of Lot 23

Lot 23 – LFF Mr Print BP 6153 3C 1903



Lot 24 – A193 E29 Mr Mag 1923



JLCS 8Y Cabo E29 – Sire of Lot 24

LOT 24 BULL

A193 E29 MR MAG 1923

P44010301 – Calved: 2/28/19 – Tattoo: LE 1923

NJW 73S W18 HOMEGROWN 8Y ET (OLE,HVF,REF,MSUDF)
 JLCS 8Y CABO E29 (OLE,HVF,REF,MSUDF)
 P43811178 JLCS X37 MARGARITA U41 Z60

SHF WONDER M326 W18 ET (CHB)(OLE,HVF,REF)
 NJW P606 72N DAYDREAM 73S (OLE,HVF,REF,MSUDF)
 JLCS KSLN 4041 TIME OUT X37 (OLE,HVF,REF)
 JLGW 28P CORONA L1 U41

NJW 72N P606 GOOD DAY 150X ET (OLE,HVF,REF)
 ESF 150X MAGNOLIA A193
 P43379227 GLENVIEW 3N NECKLACE 7472ET

PW VICTOR BOOMER P606 (SDD)(CHB)(OLE,HVF,REF)
 NJW 94J DEW 72N (OLE,HVF,REF)
 ELM-LODGE NEXT BIG THING 3N
 ELM-LODGE NECKLACE ET 37N

BMSI	358																	
BIIS	414	CE	BW	WW	YW	DMI	SC	SCF	MM	M&G	MCE	MCW	UDDR	TEAT	CW	FAT	REA	MARB
CHBS	110	-0.5	2.7	46	76	0.0	0.6	16.4	30	53	-0.1	83	1.20	1.20	67	-0.002	0.66	0.05

- Halter broke
- A super thick, moderate beef bull that should really breed well.
- His sire, Cabo, was our selection in the 2017 J&L Cattle sale. We purchased him with H Town Cattle, with the intention of building a cowherd. Unfortunately we lost him at an early age.
- This calf's maternal grandsire, Good Day, is a full brother to NJW P606 72N Daydream 73S, the dam of Homegrown 8Y.

LOT 25 COW

LFF 406B 6964 JADE 1901

P44012069 – Calved: 1/15/19 – Tattoo: LE 1901

HYALITE ON TARGET 936 (SDD)(CHB)(OLE,HVF,REF,MSUDF)
 R LEADER 6964 (CHB)(OLE,HVF,REF,MSUDF)
 P43500058 R MISS REVOLUTION 1009 (SDD)(OLE,HVF,REF)

SCHU-LAR ON TARGET 22S (SDD)(CHB)(OLE,HVF,REF,MSUDF)
 HYALITE TS LASS 310 (OLE,HVF,REF)
 MSU TCF REVOLUTION 4R (SDD)(CHB)(OLE,HVF,REF)
 R MISS WRANGLER 3007

STAR BRITE EXPECTATIONS 33Y ET (OLE,HVF,REF)
 GOBLE JADE 406B
 P43465310 GOBLE JADA 103Y

STAR BRIGHT FUTURE 533P ET (SDD)(CHB)(OLE,HVF,REF)
 STAR MISS AMERICA 12P (OLE,HVF,REF)
 LAKE 002 KILOWATTS 104S (OLE,HVF,REF)
 GRF JADE 926

BMSI	304																	
BIIS	382	CE	BW	WW	YW	DMI	SC	SCF	MM	M&G	MCE	MCW	UDDR	TEAT	CW	FAT	REA	MARB
CHBS	111	3.5	2.3	64	101	0.4	1.4	13.0	23	55	2.5	92	1.20	1.30	78	0.038	0.39	0.09

- Halter broke
- Leader offspring are some of the industry's most popular. This young lady is balanced, broody and feminine.
- She is from a strong breeding Goble cow family.



Lot 25 – LFF 406B 6964 Jade 1901



R Leader 6964 – Sire of Lot 25



Lot 26 – TJL Lily Trust 1705

LOT 26 COW

TJL LILY TRUST 1705

P43844024 – Calved: 2/25/17 – Tattoo: LE 1705

KCF BENNETT 3008 M326 (S00)(OLE,HVE,IEF)
 NJW 73S M326 TRUST 100W ET (S00)(C0B)(OLE,HVE,IEF,MSUDF)
 P43002897 NJW P606 72N DAYDREAM 73S (OLE,HVE,IEF,MSUDF)

RRH MR FELT 3008 (S00)(C0B)(OLE,HVE,IEF)
 KCF MISS 459 F284
 PW VICTOR BOOMER P606 (S00)(OLE,HVE,IEF)
 NJW 94J DEW 72N (OLE,HVE,IEF)

BHR 2T BARB WIRE 924 ET
 924 MISS LILY 1216
 P43326903 BOOT HILL BELL 884

MSU TCF TITLST 2T ET (OLE,HVE,IEF)
 STAR OKALANI BARBIE 524P (OLE,HVE,IEF)
 MOHICAN ROUGHOUT 428R ET (OLE,HVE,IEF)
 BOOT HILL MISS BELLE 530

BMSIS	374																	
BIIS	449	CE	BW	WW	YW	DMI	SC	SCF	MM	M&G	MCE	MCW	UDDR	TEAT	CW	FAT	REA	MARB
CHBS	129	2.4	3.1	60	103	0.3	1.2	16.1	29	59	8.0	126	1.20	1.20	79	-0.022	0.69	0.11

- A really productive top shelf two-year old we need to be keeping. She really milks well and bred back early.
- Pasture exposed April 20 to July 31, 2019, to RVP 118U Fortitude ET 7F (P44007413). Fortitude is our junior herd sire we purchased in the 2018 River Valley sale in Canada.

LOT 26A COW

LFF 1705 C309 MISS TICE 1931

P44010264 – Calved: 4/1/19 – Tattoo: LE 1931

GCC JPF LBB ENTICER A117 (OLE,HVE,IEF)
 CLF GCC ENTICE C309 (OLE,HVE,IEF,MSUDF)
 P43605073 GRASSY RUN RACHEL 1012

LAKE 002 KILOWATTS 104S (OLE,HVE,IEF)
 JPF K01 MS EMBRACE U11
 MSU TCF REVOLUTION 4R (S00)(C0B)(OLE,HVE,IEF)
 GRASSY 837S RACHEL 633

NJW 73S M326 TRUST 100W ET (S00)(C0B)(OLE,HVE,IEF,MSUDF)
 TJL LILY TRUST 1705
 P43844024 924 MISS LILY 1216

KCF BENNETT 3008 M326 (S00)(OLE,HVE,IEF)
 NJW P606 72N DAYDREAM 73S (OLE,HVE,IEF,MSUDF)
 BHR 2T BARB WIRE 924 ET
 BOOT HILL BELL 884

BMSIS	337																		
BIIS	407	CE	BW	WW	YW	DMI	SC	SCF	MM	M&G	MCE	MCW	UDDR	TEAT	CW	FAT	REA	MARB	
CHBS	111	5.5	2.8	58	94	0.5	1.0	15.0	23	52	5.7	106	1.20	1.20	74	-0.012	0.58	0.09	

- OCV
- Halter broke
- A younger heifer by Entice that would make a super junior prospect.
- She will grow up to produce like her mama.



Lot 26A – LFF 1705 C309 Miss Tice 1931



NJW 73S M326 Trust 100W ET – Famed sire of Lot 26



Lot 27 – LFF Barbie 1528



Lot 27A – LFF Little Barb 1933



LFF BARBIE 1528

P43651347 – Calved: 4/27/15 – Tattoo: LE 1528

RVP STAR 533P CAN-AM ET 57U (DLF,HYF,IEF)
GOBLE HOMEGROWN 213X
P43079379 SRM MISS LILLIE 736 (DLF,HYF,IEF)

STAR BRIGHT FUTURE 533P ET (S00)(DLF,HYF,IEF)
STAR BONNIE BETH 54N
STAR ORLANDO 561P ET
OXH LILA 7014

HB STAR BATTLE GROUND 2013 (DLF,HYF,IEF)
BOOT HILL STAR BARBIE 601
P42695679 STAR OKALANI BARBIE 524P (DLF,HYF,IEF)

C-S PURE GOLD 98170 (S00)(CHB)(DLF,HYF,IEF)
MSU MISS WRANGLER 61J
REMITALL ONLINE 122L (S00)(CHB)(DLF,HYF,IEF)
STAR BARBIE 84M

BMSIS	297	BIIS	355	CE	BW	WW	YW	DMI	SC	SCF	MM	M&G	MCE	MCW	UDDR	TEAT	CW	FAT	REA	MARB
CHBS	105	-7.9	5.6	53	86	-0.1	0.8	13.0	22	48	-2.7	86	1.20	1.30	63	-0.012	0.37	-0.02		

- A member of the Barbie cow family that bred so well for Star Lake. Just a four-year old in her prime.
- Pasture exposed June 15 to August 31, 2019, to RVP 118U Fortitude ET 7F (P44007413).



LFF LITTLE BARB 1933

P44010269 – Calved: 4/11/19 – Tattoo: LE 1933

GCC JPF LBB ENTICER A117 (DLF,HYF,IEF)
CLF GCC ENTICE C309 (DLF,HYF,IEF,MSUDF)
P43605073 GRASSY RUN RACHEL 1012

LAKE 002 KILOWATTS 104S (DLF,HYF,IEF)
JPF K01 MS EMBRACE U11
MSU TCF REVOLUTION 4R (S00)(CHB)(DLF,HYF,IEF)
GRASSY 837S RACHEL 633

GOBLE HOMEGROWN 213X
LFF BARBIE 1528
P43651347 BOOT HILL STAR BARBIE 601

RVP STAR 533P CAN-AM ET 57U (DLF,HYF,IEF)
SRM MISS LILLIE 736 (DLF,HYF,IEF)
HB STAR BATTLE GROUND 2013 (DLF,HYF,IEF)
STAR OKALANI BARBIE 524P (DLF,HYF,IEF)

BMSIS	303	BIIS	366	CE	BW	WW	YW	DMI	SC	SCF	MM	M&G	MCE	MCW	UDDR	TEAT	CW	FAT	REA	MARB
CHBS	102	-2.0	3.5	53	83	0.1	0.8	13.5	19	46	-0.9	86	1.20	1.30	65	-0.002	0.42	0.04		

- OCV
- Halter broke
- Another younger girl that is angular, really long fronted and stylish.



Lot 28 – PRR MRK Mimi 123B



Lot 28A – LFF 123B E29 Mimi



PRR MRK MIMI 123B {DLF,HYF,IEF,MSUDF}

P43516864 – Calved: 6/2/14 – Tattoo: BE 123B

NS LAKES KILO 002
LAKE 002 KILOWATTS 104S (DLF,HYF,IEF)
P42698463 TNJ VICK NIKI 9104 9207C

JSF 37 271 DEVO 23C (S00)
GK APOLLONIA 834Z
PW NICK 9104 (S00)
TNJ DETERMINATE 156 17F

HARVIE TAILOR MADE ET 7W (DLF,HYF,IEF)
PRR RMK FLOWER GIRL 123Z
P43319518 HCC LYLA U23

HARVIE TRAVELER 69T
HARVIE MISS FIREFLY 51F
HB STAR BATTLE GROUND 2013 (DLF,HYF,IEF)
HCC LILLY S02 ET

BMSIS	311	BIIS	371	CE	BW	WW	YW	DMI	SC	SCF	MM	M&G	MCE	MCW	UDDR	TEAT	CW	FAT	REA	MARB
CHBS	94	-3.2	3.4	57	87	0.4	0.8	15.0	16	45	-2.4	97	1.30	1.20	64	-0.022	0.29	-0.07		

- A really long bodied, freckled daughter of Kilowatts who bred so well for Ridgeview Farms. Mated to Blueprint should work here!
- Bred AI April 16, 2019, to Boyd 31Z Blueprint 6153. Safe to AI date.



LFF 123B E29 MIMI

P44010296 – Calved: 2/10/19 – Tattoo: LE 1915

NW 73S W18 HOMEGROWN 8Y ET (DLF,HYF,IEF,MSUDF)
JLCS 8Y CABO E29 (DLF,HYF,IEF,MSUDF)
P43811178 JLCS X37 MARGARITA U41 260

SHF WONDER M326 W18 ET (CHB)(DLF,HYF,IEF)
NW P606 72N DAYDREAM 73S (DLF,HYF,IEF,MSUDF)
JLCS KSLN 4041 TIME OUT X37 (DLF,HYF,IEF)
JLWG 28P CORONA L1 U41

LAKE 002 KILOWATTS 104S (DLF,HYF,IEF)
PRR MRK MIMI 123B (DLF,HYF,IEF,MSUDF)
P43516864 PRR RMK FLOWER GIRL 123Z

NS LAKES KILO 002
TNJ VICK NIKI 9104 9207C
HARVIE TAILOR MADE ET 7W (DLF,HYF,IEF)
HCC LYLA U23

BMSIS	311	BIIS	373	CE	BW	WW	YW	DMI	SC	SCF	MM	M&G	MCE	MCW	UDDR	TEAT	CW	FAT	REA	MARB
CHBS	107	-2.1	3.1	57	91	0.4	0.8	13.8	24	52	-3.3	100	1.10	1.00	73	-0.002	0.58	-0.01		

- OCV
- Halter broke
- Long and attractive like her mother.
- Loads of growth in this pedigree.



Lot 29 – LFF Just Trust Me B411 1814



Lot 31 – LFF 329Y 31D Dukes Luck 1921

LOT 29 COW

LFF JUST TRUST ME B411 1814

P43929062 – Calved: 2/26/18 – Tattoo: LE 1814

KCF BENNETT 3008 M326 (S00)(OLE,HVF,JEF)
 NIW 73S M326 TRUST 100W ET (S00)(CHB)(OLE,HVF,JEF,MSUDF)
 P43002897 NIW P606 72N DAYDREAM 73S (OLE,HVF,JEF,MSUDF)

RRH MR FELT 3008 (S00)(CHB)(OLE,HVF,JEF)
 KCF MISS 459 F284
 PW VICTOR BOOMER P606 (S00)(OLE,HVF,JEF)
 NIW 94J DEW 72N (OLE,HVF,JEF)

STAR BRITE EXPECTATIONS 33Y ET (OLE,HVF,JEF)
 GOBLE RH LIV B411
 P43489023 GOBLE 002 LIVVI 203X ET

STAR BRIGHT FUTURE 533P ET (S00)(OLE,HVF,JEF)
 STAR MISS AMERICA 12P (OLE,HVF,JEF)
 NS LAKES KILO 002
 TNJ VICK NIKI 9104 9207C

BMSIS 365

BMSIS	433	CE	BW	WW	YW	DMI	SC	SCF	MM	M&G	MCE	MCW	UDDR	TEAT	CW	FAT	REA	MARB
CHBS	119	1.1	2.3	56	94	0.1	1.1	16.3	30	58	4.5	116	1.30	1.30	71	-0.032	0.47	0.07

- This yearling from the show team is super easy doing. You will like her depth, width from end to end and her maternal look.
- Trust daughters don't miss as brood cows.
- Bred AI May 25, 2019, to MSU TCF Revolution 4R. Safe to AI date.

LOT 30 COW

TL 99A DESIREE I30D

P44007410 – Calved: 1/30/16 – Tattoo: RE THUR130D

RVP 100W YUL 123Y
 RVP 123Y AMPERAGE 99A
 P44007409 STAR BNGCV MORNING STAR 42Y (OLE,HVF,JEF)

NIW 73S M326 TRUST 100W ET (S00)(CHB)(OLE,HVF,JEF,MSUDF)
 GRH 3041 SILK 10T
 FCC 7M QUANTUM 2U (OLE,HVF,JEF,MSUDF)
 STAR BRITE TOMORROW 453U ET (OLE,HVF,JEF)

BAR-J-M FUDDLES 11W
 MHPH 11W LUCY 123Z
 P44007408 BAR-J-M LUCY 38X

DR WORLD CLASS 517 10H (S00)(OLE,HVF,JEF)
 GH QUANZA MYSTIFIER 126R
 BJM-HRF TRADITION 13T
 BAR-J-M LUCY 36P

BMSIS 304

BMSIS	370	CE	BW	WW	YW	DMI	SC	SCF	MM	M&G	MCE	MCW	UDDR	TEAT	CW	FAT	REA	MARB
CHBS	103	-0.8	4.5	57	85	0.2	1.1	13.4	24	53	6.0	92	1.20	1.10	70	-0.002	0.43	0.02

- A young Canadian bred female that should work well mated to Cabo.
- Bred AI April 16, 2019, to JLCS 8Y Cabo E29. Safe to AI date.
- Lot 30A: Steer 1907, calved Jan. 25, 2019 sired by RVP 100W Duke 31D

LOT 31 STEER

STEER

Calved: 2/25/19

- Sire: RVP 100W Duke 31D
- Halter broke
- A super attractive show steer prospect that is long, muscular and correct.

GMF

• grand meadows farm •

Dave and Jill Bielema
Ben and Lindsay Gandy
Reed, Kara and Fox Loney
Matt and Kristin Capparelli
greatlakesherefordbeef@gmail.com
grandmeadowsfarm.com
616-292-7474



Lot 32 – Grand Elexis 40C ET

LOT
32
COW

GRAND ELEXIS 40C ET {DLF,HYF,IEF,MSUDF}

P43634577 – Calved: 3/13/15 – Tattoo: BE 40C

CHURCHILL SENSATION 028X (SOD){DLF,HYF,IEF}
CHURCHILL RED BULL 200Z (CHB){DLF,HYF,IEF,MSUDF}
P43281860 CHURCHILL LADY 002X ET (DLF,HYF,IEF,MSUDF)

UPS DOMINO 3027 (SOD){DLF,HYF,IEF,MSUDF}
CHURCHILL LADY 7202T ET (DLF,HYF,IEF)
GOLDEN OAK OUTCROSS 18U (SOD){CHB}{DLF,HYF,IEF,MSUDF}
CHURCHILL LADY 600S ET (DLF,HYF,IEF)

REMITALL ONLINE 122L (SOD){CHB}{DLF,HYF,IEF}
CSF 122L ALEXIS 308R ET (SOD){DLF,HYF,IEF}
P42606748 MSU WF ALEXIS L46

REMITALL EMBRACER 8E (SOD){HYF}
REMITALL CATALINA 24H
REMITALL KEYNOTE 20X (SOD){CHB}
WNH OPTIMA 94019804

BMSI	354	AHIA GenePro																
BIIS	423	CE	BW	WW	YW	DMI	SC	SCF	MM	M&G	MCE	MCW	UDDR	TEAT	CW	FAT	REA	MARB
CHBS	120	0.4	3.4	63	101	0.3	1.3	16.0	32	64	3.0	94	1.60	1.60	77	-0.012	0.59	-0.04

- This excellent Red Bull daughter is out of a GMF Dam of Distinction. She unfortunately lost her 2019 calf to illness. EPDs, power, udder quality and pedigree makes her one to look at. We retained a daughter or we wouldn't part with her.
- Bred AI May 25, 2019, to AH JDH 34X Victor 33Z 2E ET, then pasture exposed June 3 to July 23, 2019, to HBK CCC SR Game Changer ET. Safe to AI date.



Churchill Red Bull 200Z – Sire of Lots 33 and 34



Lot 33A – Grand E19 30B Daenerys G22

LOT 33 COW

GRAND DAENERYS 30B ET {DLF,HYF,IEF}

P43528489 – Calved: 10/4/14 – Tattoo: BE 30B

CHURCHILL SENSATION 028X (SOD)(OLE,HYF,IEF)
 CHURCHILL RED BULL 200Z (CHB)(OLE,HYF,IEF,MSUDF)
 P43281860 CHURCHILL LADY 002X ET (OLE,HYF,IEF,MSUDF)

UPS DOMINO 3027 (SOD)(OLE,HYF,IEF,MSUDF)
 CHURCHILL LADY 7202 ET (OLE,HYF,IEF)
 GOLDEN OAK OUTCROSS 18U (SOD)(CHB)(OLE,HYF,IEF,MSUDF)
 CHURCHILL LADY 600S ET (OLE,HYF,IEF)

REMITALL ONLINE 122L (SOD)(CHB)(OLE,HYF,IEF)
 CSF 122L ALEXIS 308R ET (SOD)(OLE,HYF,IEF)
 P42606748 MSU WF ALEXIS L46

REMITALL EMBRACER 8E (SOD)(HYF)
 REMITALL CATALINA 24H
 REMITALL KEYNOTE 20X (SOD)(CHB)
 WNH OPTIMA 94019804

BMSIS	382	CE	BW	WW	YW	DMI	SC	SCF	MM	M&G	MCE	MCW	UDDR	TEAT	CW	FAT	REA	MARB
BIIS	466	-1.4	3.4	67	117	0.1	1.3	16.0	26	59	1.8	106	1.50	1.60	83	-0.002	0.66	0.15
CHBS	141	-1.4	3.4	67	117	0.1	1.3	16.0	26	59	1.8	106	1.50	1.60	83	-0.002	0.66	0.15

- Another fine Red Bull daughter out of a donor quality Cottonwood Springs cow. Her EPD profile is impressive! Her Skyfall daughter is made right and will work!
- Bred AI May 25, 2019, to C Double Your Miles 607 ET, then pasture exposed June 3 to July 23, 2019, to H BK CCC SR Game Changer ET.

LOT 33A COW

GRAND E19 30B DAENERYS G22

P44005748 – Calved: 4/9/19 – Tattoo: BE G22

CHURCHILL TORO 507C ET (CHB)(OLE,HYF,IEF,MSUDF)
 GRAND SKYFALL 507C 8133 E19 (OLE,HYF,IEF,MSUDF)
 P43798279 CSF BR GABRIELLE 8133 ET (OLE,HYF,IEF,MSUDF)

NWJ 98S R117 RIBEYE 88X ET (SOD)(OLE,HYF,IEF,MSUDF)
 SR CCC LADYSPORT 2205 Z ET (OLE,HYF,IEF)
 DM BR SOONER (CHB)(OLE,HYF,IEF)
 BR GABRIELLE 5082 (OLE,HYF,IEF)

CHURCHILL RED BULL 200Z (CHB)(OLE,HYF,IEF,MSUDF)
 GRAND DAENERYS 30B ET (OLE,HYF,IEF)
 P43528489 CSF 122L ALEXIS 308R ET (SOD)(OLE,HYF,IEF)

CHURCHILL SENSATION 028X (SOD)(OLE,HYF,IEF)
 CHURCHILL LADY 002X ET (OLE,HYF,IEF,MSUDF)
 REMITALL ONLINE 122L (SOD)(CHB)(OLE,HYF,IEF)
 MSU WF ALEXIS L46

BMSIS	383	CE	BW	WW	YW	DMI	SC	SCF	MM	M&G	MCE	MCW	UDDR	TEAT	CW	FAT	REA	MARB
BIIS	463	-0.5	4.4	65	113	0.3	1.1	17.3	26	58	0.7	88	1.50	1.60	79	-0.002	0.58	0.10
CHBS	129	-0.5	4.4	65	113	0.3	1.1	17.3	26	58	0.7	88	1.50	1.60	79	-0.002	0.58	0.10



Lot 34 – Grand Carnelia E06 ET



JDH Victor 719T 33Z ET – Featured AI service sire

LOT 34 COW

GRAND CARNELIA E06 ET {DLF,HYF,IEF,MSUDF}

P43796392 – Calved: 3/10/17 – Tattoo: BE E06

CHURCHILL SENSATION 028X (SOD)(OLE,HYF,IEF)
 CHURCHILL RED BULL 200Z (CHB)(OLE,HYF,IEF,MSUDF)
 P43281860 CHURCHILL LADY 002X ET (OLE,HYF,IEF,MSUDF)

UPS DOMINO 3027 (SOD)(OLE,HYF,IEF,MSUDF)
 CHURCHILL LADY 7202 ET (OLE,HYF,IEF)
 GOLDEN OAK OUTCROSS 18U (SOD)(CHB)(OLE,HYF,IEF,MSUDF)
 CHURCHILL LADY 600S ET (OLE,HYF,IEF)

C-S PURE GOLD 98170 (SOD)(CHB)(OLE,HYF,IEF)
 RED HILL MY LADY N212 (OLE,HYF,IEF)
 P42453370 RED HILL VICTORIA H06 L94

C GOLD RUSH 1ET
 C MS DOM 93218 1ET
 SHF RED TORNADO 417 H06
 LCC LADY ENDURANCE C229

BMSIS	390	CE	BW	WW	YW	DMI	SC	SCF	MM	M&G	MCE	MCW	UDDR	TEAT	CW	FAT	REA	MARB
BIIS	456	5.0	1.3	57	90	-0.1	1.0	17.8	24	53	1.3	103	1.40	1.40	75	0.018	0.73	0.01
CHBS	123	5.0	1.3	57	90	-0.1	1.0	17.8	24	53	1.3	103	1.40	1.40	75	0.018	0.73	0.01

- Another Red Bull daughter, this time tracing back to N212, who was bred in the Red Hills herd and was a donor for Cottonwood Springs and Grand Meadows Farm. Her Skyfall steer calf will help some junior out.
- Bred AI May 25, 2019, to AH JDH 34X Victor 33Z 2E ET, then pasture exposed June 3 to July 23, 2019, to H BK CCC SR Game Changer ET. Safe to AI date.

LOT 34A STEER

STEER

Calved: 3/28/19

- Sire: Grand Skyfall 507C 8133 E19





Lot 35 – CH MS Jordyn 603

LOT 35 COW

CH MS JORDYN 603 {DLF,HYF,IEF}

43683540 – Calved: 1/6/16 – Tattoo: BE 603

CRR ABOUT TIME 743 (SOD){DLF,HYF,IEF}
 CH NAVIGATOR 320 ET (DLF,HYF,IEF)
 43428501 TCC MISS HARLAND 93 ET (DLF,HYF,IEF)

THM DURANGO 4037 (SOD){DLF,HYF,IEF}
 CRR D03 CASSIE 206 (DLF,HYF,IEF)
 CJH HARLAND 408 (SOD){DLF,HYF,IEF,MSDOP}
 LCC TWO TIMIN 438 ET (DLF,HYF,IEF)

CH OK ADVANCE SHADOW 0115 ET (DLF,HYF,IEF)
 CHMS JULIE 2050
 43363638 CH JR JUDY 0040 ET (DLF,HYF,IEF)

HH ADVANCE 4140P (SOD){CHB}{DLF,IEF}
 HH MISS ADVANCE 4098P (DLF,HYF,IEF)
 DM BR L1 DOMINO 146 (SOD){DLF,IEF}
 CH MS REBA 7016 ET (DLF,IEF)

BMS	336	CE	BW	WW	YW	DMI	SC	SCF	MM	M&G	MCE	MCW	UDDR	TEAT	CW	FAT	REA	MARB	
BIIS	389																		
CHBS	109	0.5	3.0	61	97	0.4	1.2	16.2	27	58	1.2	73	1.50	1.60	72	-0.002	0.69	-0.23	

- A solid Curry Herefords bred female with an awesome udder. Dark red, short marked. Easy keeping good mother with a really nice Game Changer heifer calf.
- Bred AI May 25, 2019, to AH JDH 34X Victor 33Z 2E ET, then pasture exposed June 3 to July 23, 2019, to H BK CCC SR Game Changer ET. Safe to AI date.

LOT 35A COW

GRAND 2447 603 JORDYN G14

P44001876 – Calved: 3/29/19 – Tattoo: BE G14

KJ HVH 33N REDEEM 485T ET (SOD){DLF,HYF,IEF}
 H BK CCC SR GAME CHANGER ET (CHB){DLF,HYF,IEF,MSDOP}
 P43296077 NJW 78P 63N LADYSPORT 51W ET (DLF,HYF,IEF)

SHF RADAR M326 R125 (SOD){DLF,HYF,IEF}
 HVH OKSANA 4L 33N (DLF,HYF,IEF)
 TH JWR S0P 166 576 TUNDRA 63N (SOD){DLF,HYF,IEF}
 NJW BW LADYSPORT DEW 78P ET (DLF,HYF,IEF)

CH NAVIGATOR 320 ET (DLF,HYF,IEF)
 CH MS JORDYN 603 (DLF,HYF,IEF)
 43683540 CHMS JULIE 2050

CRR ABOUT TIME 743 (SOD){DLF,HYF,IEF}
 TCC MISS HARLAND 93 ET (DLF,HYF,IEF)
 CH OK ADVANCE SHADOW 0115 ET (DLF,HYF,IEF)
 CH JR JUDY 0040 ET (DLF,HYF,IEF)

BMS	342	CE	BW	WW	YW	DMI	SC	SCF	MM	M&G	MCE	MCW	UDDR	TEAT	CW	FAT	REA	MARB	
BIIS	398																		
CHBS	120	-4.3	5.8	63	101	0.1	0.9	15.5	26	58	0.0	102	1.40	1.40	74	-0.012	0.68	-0.22	



Lot 35A – Grand 2447 603 Jordyn G14



Lot 36 – CCC LHF Lady Randolph 6250D ET



C ETF Wildcat 4248 ET – Sire of Lots 36 and 37

LOT 36 COW

CCC LHF LADY RANDOLPH 6250D ET {DLF,HYF,IEF}

P43702986 – Calved: 3/8/16 – Tattoo: LE 6250

NJW 73S M326 TRUST 100W ET (S00)(CHB)(DLF,HYF,IEF,MSUDF)
 C ETF WILDCAT 4248 ET (CHB)(DLF,HYF,IEF)
 P43487262 RPH MAIDEN 95T (DLF,HYF,IEF)

KCF BENNETT 3008 M326 (S00)(DLF,HYF,IEF)
 NJW P606 72N DAYDREAM 73S (DLF,HYF,IEF,MSUDF)
 SHF PHOENIX M33 P68
 C MS GAME PLAN 5161 (C000)

GOLDEN OAK OUTCROSS 18U (S00)(CHB)(DLF,HYF,IEF,MSUDF)
 CHURCHILL LADY 3190A ET (DLF,HYF,IEF)
 P43377091 DCC 8006 PATTI 4266 ET (DLF,HYF,IEF)

GOLDEN-OAK FUSION 3S (DLF,HYF,IEF,MSUDF)
 GOLDEN-OAK 60D MALLORY 15M
 H 8E EMBRACER 8006
 OXH PATTI 2175

BMSI	423	NIMA CEED																
BIIS	500	CE	BW	WW	YW	DMI	SC	SCF	MM	M&G	MCE	MCW	UDDR	TEAT	CW	FAT	REA	MARB
CHBS	125	-2.7	4.0	51	86	0.2	0.6	19.2	30	56	5.0	115	1.30	1.30	81	-0.002	0.62	0.25

- This well marked young cow was our choice from Churchill Cattle Co. 2016 fall sale. She has a solid pedigree and a nice Skyfall heifer calf. Note her carcass EPDs!
- Bred AI May 25, 2019, to two time national champion BR Belle Air 6011, then pasture exposed June 3 to July 23, 2019, to H BK CCC SR Game Changer ET. Safe to AI date.



Lot 37 – Grand 4248 306T Teva E38 ET

LOT 37 COW

GRAND 4248 306T TEVA E38 ET

P43839204 – Calved: 8/28/17 – Tattoo: BE E38

NJW 73S M326 TRUST 100W ET (S00)(CHB)(DLF,HYF,IEF,MSUDF)
 C ETF WILDCAT 4248 ET (CHB)(DLF,HYF,IEF)
 P43487262 RPH MAIDEN 95T (DLF,HYF,IEF)

KCF BENNETT 3008 M326 (S00)(DLF,HYF,IEF)
 NJW P606 72N DAYDREAM 73S (DLF,HYF,IEF,MSUDF)
 SHF PHOENIX M33 P68
 C MS GAME PLAN 5161 (C000)

DM BR SOONER (CHB)(DLF,HYF,IEF)
 CSF BR 435 TEVA 306T ET (DLF,HYF,IEF)
 P42832692 CL 1 DOMINET 496 1ET

REMITALL ONLINE 122L (S00)(CHB)(DLF,HYF,IEF)
 DM L1 DOMINETTE 901 (DLF,HYF,IEF)
 CL 1 DOMINO 386 (S00)(DLF,IEF)
 L1 DOMINETTE 850413

BMSI	397	NIMA CEED																
BIIS	469	CE	BW	WW	YW	DMI	SC	SCF	MM	M&G	MCE	MCW	UDDR	TEAT	CW	FAT	REA	MARB
CHBS	125	-0.2	2.9	53	86	-0.1	0.8	18.1	31	58	0.9	68	1.30	1.40	76	-0.002	0.55	0.14

- This freckle faced heifer has it all. Pigment, pedigree and potential!
- Bred AI May 25, 2019, to AH JDH 34X Victor 332 2E ET, then pasture exposed June 3 to July 23, 2019, to H BK CCC SR Game Changer ET. Safe to AI date.

LOT 36A COW

GRAND E19 6250 LADY RAND G18

P44002395 – Calved: 4/1/19 – Tattoo: BE G18

CHURCHILL TORO 507C ET (CHB)(DLF,HYF,IEF,MSUDF)
 GRAND SKYFALL 507C 8133 E19 (DLF,HYF,IEF,MSUDF)
 P43798279 CSF BR GABRIELLE 8133 ET (DLF,HYF,IEF,MSUDF)

NJW 98S R117 RIBEYE 88X ET (S00)(DLF,HYF,IEF,MSUDF)
 SR CCC LADYSPORT 2205 Z ET (DLF,HYF,IEF)
 DM BR SOONER (CHB)(DLF,HYF,IEF)
 BR GABRIELLE 5082 (DLF,HYF,IEF)

C ETF WILDCAT 4248 ET (CHB)(DLF,HYF,IEF)
 CCC LHF LADY RANDOLPH 6250D ET (DLF,HYF,IEF)
 P43702986 CHURCHILL LADY 3190A ET (DLF,HYF,IEF)

NJW 73S M326 TRUST 100W ET (S00)(CHB)(DLF,HYF,IEF,MSUDF)
 RPH MAIDEN 95T (DLF,HYF,IEF)
 GOLDEN OAK OUTCROSS 18U (S00)(CHB)(DLF,HYF,IEF,MSUDF)
 DCC 8006 PATTI 4266 ET (DLF,HYF,IEF)

BMSI	402	NIMA CEED																
BIIS	475	CE	BW	WW	YW	DMI	SC	SCF	MM	M&G	MCE	MCW	UDDR	TEAT	CW	FAT	REA	MARB
CHBS	118	5.7	1.5	49	83	0.3	0.7	18.8	28	52	5.8	92	1.40	1.40	77	0.008	0.56	0.21

- This McDonald bred female is doing a great job with her sharp Skyfall steer calf.
- Pasture exposed June 3 to July 23, 2019, to H BK CCC SR Game Changer ET, then pasture exposed to Grand Skyfall 507C 8133 E19. Safe in calf.
- Lot 38A: Steer 617, calved April 13, 2019 sired by Grand Skyfall 507C 8133 E19



Lot 38 – MF 38X Deidra 424 1604

LOT 38 COW

MF 38X DEIDRA 424 1604 ET {DLF,HYF,IEF}

43714742 – Calved: 3/27/16 – Tattoo: BE 1604

UPS SENSATION 2296 ET (DLF,HYF,IEF,MSUDF)
 ECR RO CHOSON ONE 424 ET (DLF,HYF,IEF)
 P43517600 JRR MISS TOBEY 711T (DLF,HYF,IEF)

CHURCHILL SENSATION 028X (S00)(DLF,HYF,IEF)
 UPS JT MISS NEON 7811 1ET (DLF,HYF,IEF)
 FELTONS OZZIE 492 (S00)(DLF,HYF,IEF)
 JRR RANDI 524R (C000)(DLF,HYF,IEF)

NJW FHF 9710 TANK 45P (S00)(DLF,HYF,IEF)
 MSU RACHAEL 38X ET (DLF,HYF,IEF)
 P43108348 MSU TCF RACHAEL ET 54N (DLF,HYF,IEF)

FHF 8403 STARBUCK 19H (S00)
 GV 579 VICTORIA 9710 (DLF,HYF,IEF)
 REMITALL ONLINE 122L (S00)(CHB)(DLF,HYF,IEF)
 HH MISS ADV 786G 1ET

BMSI	313	NIMA CEED																
BIIS	381	CE	BW	WW	YW	DMI	SC	SCF	MM	M&G	MCE	MCW	UDDR	TEAT	CW	FAT	REA	MARB
CHBS	94	-0.8	4.7	59	94	0.5	1.4	15.0	27	57	1.5	85	1.50	1.40	63	-0.032	0.29	0.01

- This McDonald bred female is doing a great job with her sharp Skyfall steer calf.
- Pasture exposed June 3 to July 23, 2019, to H BK CCC SR Game Changer ET, then pasture exposed to Grand Skyfall 507C 8133 E19. Safe in calf.
- Lot 38A: Steer 617, calved April 13, 2019 sired by Grand Skyfall 507C 8133 E19



Lot 39 – PCR Goldies Shy Ann 525C



Lot 39A – Grand 2447 525C Shyanne G20

LOT 39
COW

PCR GOLDIES SHY ANN 525C {DLF,HYF,IEF}

P43623038 – Calved: 2/26/15 – Tattoo: RE PCR/LE 525C

TH 122 711 VICTOR 719T (S00){OLE,HYF,IEF,MSUDF}
TH 49U 719T SHEYENNE 3X (OLE,HYF,IEF)
P43101191 TH 23S 103R DUCHESS 49U (Q00){OLE,HYF,IEF,MSUDF}

DRF JWR PRINCE VICTOR 711 (S00){OLE,HYF,IEF,MSUDF}
KBCR 19D DOMINETTE 122 (OLE,IEF)
TH 75J 44M LEGACY 103R (OLE,IEF)
TH 53P W39 DUCHESS 23S

RPH PCR IDAHO 80U (S00){OLE,HYF,IEF}
PCR IDA GOLDIE 40X (OLE,HYF,IEF,MSUDF)
P43112028 PCR ABIGAIL GOLDIE 854U

SHF PHOENIX M33 P68
RPH PLAYMATE 13K (Q00)
PCR 286 MR ADVISOR 502R (CHB){OLE,HYF,IEF}
PCR PAIGE GAL 310N (Q00)

BMSIS	344																	
BIIS	424	CE	BW	WW	YW	DMI	SC	SCF	MM	M&G	MCE	MCW	UDDR	TEAT	CW	FAT	REA	MARB
CHBS	109	10.2	-1.9	56	86	0.3	0.8	15.3	31	59	4.9	93	1.40	1.40	78	0.068	0.40	0.21

- 525C was our pick at Phil and Chris Rottman's last sale. Conservatively marked, well uddered and easy keeping. Her Game Changer steer calf last year was a stunner. Her Game Changer heifer calf this year may be better!
- Bred AI May 25, 2019, to AH JDH 34X Victor 33Z 2E ET, then pasture exposed June 3 to July 23, 2019, to H BK CCC SR Game Changer ET. Safe to AI date.



Lot 40 – Churchill Lady 4354B ET

LOT 40
COW

CHURCHILL LADY 4354B ET {DLF,HYF,IEF}

P43562167 – Calved: 10/29/14 – Tattoo: LE 4354

TH JWR SOP 166 576 TUNDRA 63N (S00){OLE,HYF,IEF}
H WCC/WB 668 WYARNO 9500 ET (OLE,HYF,IEF)
P43026011 H KATHY 668 ET (OLE,HYF,IEF)

RU 20X BOULDER 576 (S00)
TEE-JAY 707B GEMINI 166 ET
C-S PURE GOLD 98170 (S00){CHB}{OLE,HYF,IEF}
/S LADY PEELESS 180L

DM BR SOONER (CHB){OLE,HYF,IEF}
CSF 435 LADY 9200
P42977117 RED HILL MY LADY N212 (OLE,HYF,IEF)

REMITALL ONLINE 122L (S00){CHB}{OLE,HYF,IEF}
DM LI DOMINETTE 901 (OLE,HYF,IEF)
C-S PURE GOLD 98170 (S00){CHB}{OLE,HYF,IEF}
RED HILL VICTORIA H06 L94

BMSIS	351																	
BIIS	422	CE	BW	WW	YW	DMI	SC	SCF	MM	M&G	MCE	MCW	UDDR	TEAT	CW	FAT	REA	MARB
CHBS	102	-8.3	5.6	60	97	0.1	0.7	16.3	27	57	-7.0	106	1.20	1.20	60	-0.022	0.50	0.05

- This short marked, pigmented female traces back to 9200, a legacy female for Cottonwood Springs and Grand Meadows Farm and a sale topper at the Definitely Different sale in 2009.
- Bred AI May 25, 2019, to AH JDH 34X Victor 33Z 2E ET, then pasture exposed June 3 to July 23, 2019, to H BK CCC SR Game Changer ET. Safe to AI date.

LOT 39A
COW

GRAND 2447 525C SHYANNE G20

P44005749 – Calved: 4/9/19 – Tattoo: BE G20

KJ HVH 33N REDEEM 485T ET (S00){OLE,HYF,IEF}
H BK CCC SR GAME CHANGER ET (CHB){OLE,HYF,IEF,MSUDF}
P43296077 NJW 78P 63N LADYSPORT 51W ET (OLE,HYF,IEF)

SHF RADAR M326 R125 (S00){OLE,HYF,IEF}
HVH OKSANA 4L 33N (OLE,HYF,IEF)
TH JWR SOP 166 576 TUNDRA 63N (S00){OLE,HYF,IEF}
NJW BW LADYSPORT DEW 78P ET (OLE,HYF,IEF)

TH 49U 719T SHEYENNE 3X (OLE,HYF,IEF)
PCR GOLDIES SHY ANN 525C (OLE,HYF,IEF)
P43623038 PCR IDA GOLDIE 40X (OLE,HYF,IEF,MSUDF)

TH 122 711 VICTOR 719T (S00){OLE,HYF,IEF,MSUDF}
TH 23S 103R DUCHESS 49U (Q00){OLE,HYF,IEF,MSUDF}
RPH PCR IDAHO 80U (S00){OLE,HYF,IEF}
PCR ABIGAIL GOLDIE 854U

BMSIS	342																	
BIIS	410	CE	BW	WW	YW	DMI	SC	SCF	MM	M&G	MCE	MCW	UDDR	TEAT	CW	FAT	REA	MARB
CHBS	117	0.9	3.3	61	96	0.1	0.8	15.0	28	59	2.0	112	1.40	1.30	77	0.028	0.54	-0.01



BR Belle Air 6011 – Sire of Lot 40A

LOT 40A
BULL

GRAND THOR 6011 4354B G03

44000471 – Calved: 3/11/19 – Tattoo: BE G03

BAR S LHF 028 240 (OLE,HYF,IEF)
BR BELLE AIR 6011 (OLE,HYF,IEF,MSUDF)
43724674 BR BELLE 4082 ET (OLE,HYF,IEF,MSUDF)

CHURCHILL SENSATION 028X (S00){OLE,HYF,IEF}
CHURCHILL LADY 078X (OLE,HYF,IEF)
GOLDEN OAK OUTCROSS 18U (S00){CHB}{OLE,HYF,IEF,MSUDF}
BR CSF BRIELLE 8052 ET (OLE,HYF,IEF)

H WCC/WB 668 WYARNO 9500 ET (OLE,HYF,IEF)
CHURCHILL LADY 4354B ET (OLE,HYF,IEF)
P43562167 CSF 435 LADY 9200

TH JWR SOP 166 576 TUNDRA 63N (S00){OLE,HYF,IEF}
H KATHY 668 ET (OLE,HYF,IEF)
DM BR SOONER (CHB){OLE,HYF,IEF}
RED HILL MY LADY N212 (OLE,HYF,IEF)

BMSIS	362																	
BIIS	438	CE	BW	WW	YW	DMI	SC	SCF	MM	M&G	MCE	MCW	UDDR	TEAT	CW	FAT	REA	MARB
CHBS	101	-2.7	2.4	54	91	0.2	1.5	16.7	30	57	-1.3	95	1.20	1.20	63	0.038	0.52	0.21

- Solid steer calf out of two time national champion, BR Belle Air 6011.



C Double Your Miles 6077 ET – 2017 National Western Stock Show National Champion Bull



C DOUBLE YOUR MILES 6077 ET {DLF,HYF,IEF,MSUDF}

P43672888 – Calved: 1/8/16 – Tattoo: BE 6077

CRR 719 CATAPULT 109 (OLE,HYF,IEF)
 CRR 5280 (OLE,HYF,IEF)
 P43483006 CRR 435 KELLY 178 (DOB)(OLE,HYF,IEF)

TH 122 711 VICTOR 719T (SDD){OLE,HYF,IEF,MSUDF}
 CRR 4037 ECLIPSE 808 (OLE,HYF,IEF)
 DM BR SOONER (CHB){OLE,HYF,IEF}
 CRR D03 KELLY 361 (OLE,IEF)

NJW 98S R117 RIBEYE 88X ET (SDD){OLE,HYF,IEF,MSUDF}
 C 88X NOTICE ME 1311 ET (OLE,HYF,IEF)
 43271371 C NOTICE ME ET (OLE,HYF,IEF)

SHF RIB EYE M326 R117 (SDD){OLE,HYF,IEF}
 NJW 9126J DEW DOMINO 98S (DOB){OLE,HYF,IEF}
 C-S PURE GOLD 98170 (SDD){CHB}{OLE,HYF,IEF}
 HH MISS ADVANCE 104A (DOB)

BMI\$	402	AHA GE-EPD																
BIIS	466	CE	BW	WW	YW	DMI	SC	SCF	MM	M&G	MCE	MCW	UDDR	TEAT	CW	FAT	REA	MARB
CHBS	114	-1.0	2.6	57	75	-0.1	0.6	19.5	27	56	-2.1	60	1.10	1.30	77	0.029	0.58	-0.06

- Dam is a full sister to Miles McKee.
- His sire, 5280, is highly desirable in his own right
- His progeny consistently demonstrate his superior center body mass, power and correctness.
- Featured calves will be some of the first to sell!
- Special semen lot: Selling 10 straws of C Double Your Miles 6077 ET.



H BK CCC SR Game Changer ET
 – Resident Herd Sire at GMF



H BK CCC SR GAME CHANGER ET {CHB}{DLF,HYF,IEF,MSUDF}

P43296077 – Calved: 3/12/12 – Tattoo: BE 2447

SHF RADAR M326 R125 (SDD){OLE,HYF,IEF}
 KJ HVH 33N REDEEM 485T ET (SDD){OLE,HYF,IEF}
 P42834201 HVH OKSANA 4L 33N (OLE,HYF,IEF)

KCF BENNETT 3008 M326 (SDD){OLE,HYF,IEF}
 SHF POSTIVE MISS 73C M15 (OLE,HYF,IEF)
 HVH KREMLIN 57F 108K
 HVH GENETIC QUEEN 53H 4L (OLE,HYF,IEF)

TH JWR SOP 166 576 TUNDRA 63N (SDD){OLE,HYF,IEF}
 NJW 78P 63N LADYSPORT 51W ET (OLE,HYF,IEF)
 P43002919 NJW BW LADYSPORT DEW 78P ET (OLE,HYF,IEF)

RU 20X BOULDER 57G (SDD)
 TEE-JAY 707B GEMINI 166 ET
 RU 20X BOULDER 57G (SDD)
 SADDLE VLY LADYSPORT 120

BMI\$	345	AHA GE-EPD																
BIIS	399	CE	BW	WW	YW	DMI	SC	SCF	MM	M&G	MCE	MCW	UDDR	TEAT	CW	FAT	REA	MARB
CHBS	126	-1.0	5.3	58	92	-0.1	0.7	14.8	25	54	2.7	130	1.30	1.30	76	-0.011	0.67	-0.15

- Featured service sire

m f

McDonald Farm

Scott McDonald
 7791 Eastern Ave. S.E.
 Grand Rapids, MI 49508
 616-446-2146
 scott@mcdonaldplumbing.com

McDonald Farm • 7791 Eastern Ave. S.E. • Grand Rapids, MI 49508 • Scott McDonald 616-446-2146 • scott@mcdonaldplumbing.com



Lot 41 – MF 1302 Fancy 6105 1806 ET

LOT
41
 COW

MF 1302 FANCY 6105 1806 ET

P43937617 – Calved: 4/6/18 – Tattoo: BE 1806

CRR 5280 (OLE:HYF,JEF)
 C SPECIAL EDITION 6105 ET (OLE:HYF,JEF,MSUDF)
 43672913 C 88X NOTICE ME 1311 ET (OLE:HYF,JEF)

CRR ABOUT TIME 743 (SOD)(OLE:HYF,JEF)
 MF 308N ADDY 1302 ET (OLE:HYF,JEF,MSUDF)
 P43403114 MF 62J NATALIE 122L 308N (OLE:HYF,JEF)

CRR 719 CATAPULT 109 (OLE:HYF,JEF)
 CRR 435 KELLY 178 (SOD)(OLE:HYF,JEF)
 NIW 98S R117 RIBEYE 88X ET (SOD)(OLE:HYF,JEF,MSUDF)
 C NOTICE ME ET (OLE:HYF,JEF)

THM DURANGO 4037 (SOD)(OLE:HYF,JEF)
 CRR D03 CASSIE 206 (OLE:HYF,JEF)
 REMITALL ONLINE 122L (SOD)(CHB)(OLE:HYF,JEF)
 MSU MISS WRANGLER 62J

BMSIS	414																	
BIIS	495	CE	BW	WW	YW	DMI	SC	SCF	MM	M&G	MCE	MCW	UDDR	TEAT	CW	FAT	REA	MARB
CHBS	125	-1.3	4.1	64	97	0.2	1.4	19.0	24	56	-1.1	101	1.20	1.20	81	0.008	0.72	0.11

- Super elegant donor prospect with unlimited earning potential! This very complete bred is tremendous on her feet and legs. This level hipped, square pinned female screams cow power and yet gives you a show heifer look when viewed from the side. Sisters our of Addie have won divisions at national shows and have been high sellers for LCC. Her grandam Natalie was a time-tested proven donor for us and Pierce's with offspring in over 35 herds across the country. Add in some extra maternal punch with Special Edition on the paternal side of this pedigree and it feels like the sky's the limit for this one.
- Sells safe in calf to the 2019 JNHE Champion Bull, CHEZ/PUGH/HARA Logic 8815F ET, with a due date of Jan. 26, 2020.



Lot 42 – MF 486 Stacie Duty 710E

LOT 42 COW

MF 486 STACIE DUTY 710E

P43935116 – Calved: 9/10/17 – Tattoo: BE 710E

NJW 67U 28M BIG MAX 22Z (OLE,HYF,JEF)
 NJW 79Z 22Z HEAVY DUTY 72C ET (OLE,HYF,JEF,MSDOF)
 P43589071 BW 91H 100W RITA 79Z ET (OLE,HYF,JEF,MSDOF)

GOLDEN-OAK 4J MAXIUM 28M (SDD)(OLE,HYF,JEF)
 NJW 4037 80L FAITH 67U (SDD)(OLE,HYF,JEF,MSDOF)
 NJW 73S M326 TRUST 100W ET (SDD)(CHB)(OLE,HYF,JEF,MSDOF)
 REMITTAL RITA 91H (OLE,HYF,JEF)

NJW 73S W18 HOMEGROWN 8Y ET (OLE,HYF,JEF,MSDOF)
 DM 4128 8Y STACIE 486 ET (OLE,HYF,JEF,MSDOF)
 P43778207 DM BR STACIE 4128 ET

SHF WONDER M326 W18 ET (CHB)(OLE,HYF,JEF)
 NJW P606 72N DAYDREAM 73S (OLE,HYF,JEF,MSDOF)
 REMITTAL ONLINE 122L (SDD)(CHB)(OLE,HYF,JEF)
 DM LI DOMINETTE 901 (OLE,HYF,JEF)

BMS	324																	
BIIS	392	CE	BW	WW	YW	DMI	SC	SCF	MM	M&G	MCE	MCW	UDDR	TEAT	CW	FAT	REA	MARB
CHBS	108	1.4	3.5	58	94	0.3	1.4	14.6	32	61	2.1	88	1.30	1.30	71	-0.002	0.47	0.03

- Another super cow prospect so typical of the Stacie daughters. This Heavy Duty daughter is super sweet fronted, but still full of rib shape and power. This long sided, wide pinned bred will really catch your eye. Her maternal value increases everyday as she continues to mature and she will produce and work for any operation.
- Sells safe in calf to the 2019 JNHE Champion Bull, CHEZ/PUGH/HARA Logic 8815F ET, with a due date of Jan. 26, 2020.



DM 4128 8Y Stacie 486 ET – Dam of Lots 42, 43 and 44



Lot 43 – MF 486 Stacie Miles 1807 ET

LOT
43
COW

MF 486 STACIE MILES 1807 ET

P43935124 – Calved: 4/7/18 – Tattoo: BE 1807

CRR 5280 (OLE,HVF,REF)
C DOUBLE YOUR MILES 6077 ET (OLE,HVF,REF,MSUDF)
P43672888 C 88X NOTICE ME 1311 ET (OLE,HVF,REF)

CRR 719 CATAPULT 109 (OLE,HVF,REF)
CRR 435 KELLY 178 (DOB)(OLE,HVF,REF)
NJW 98S R117 RIBEYE 88X ET (SOD)(OLE,HVF,REF,MSUDF)
C NOTICE ME ET (OLE,HVF,REF)

NJW 73S W18 HOMEROWN 8Y ET (OLE,HVF,REF,MSUDF)
DM 4128 8Y STACIE 486 ET (OLE,HVF,REF,MSUDF)
P43778207 DM BR STACIE 4128 ET

SHF WONDER M326 W18 ET (CHBS)(OLE,HVF,REF)
NJW P606 72N DAYDREAM 73S (OLE,HVF,REF,MSUDF)
REMITALL ONLINE 122L (SOD)(CHBS)(OLE,HVF,REF)
DM LI DOMINETTE 901 (OLE,HVF,REF)

BMS	353																	
BIIS	419	CE	BW	WW	YW	DMI	SC	SCF	MM	M&G	MCE	MCW	UDDR	TEAT	CW	FAT	REA	MARB
CHBS	110	0.2	2.9	55	80	0.0	0.9	16.2	32	60	-0.9	74	1.20	1.30	73	0.018	0.48	0.03

- Really attractive, powerfully constructed donor prospect our of our very popular Stacie cow. This freckled face beauty plants and drives off both ends of her skeleton with ease. She is one who is truly unique with her hind leg structure end yet still is square from her hock to the ground. I get so excited thinking what this 6077 will look like wet next spring! Another bred heifer that is the practical, producing kind and sure to be in someone's front pasture.
- Sells safe in calf to the 2019 JNHE Champion Bull, CHEZ/PUGH/HARA Logic 8815F ET, with a due date of Feb. 12, 2020.

LOT
44
COW

MF 486 STACIE TIDE 1810 ET

P43935117 – Calved: 4/10/18 – Tattoo: BE 1810

CHURCHILL SENSATION 028X (SOD)(OLE,HVF,REF)
CRR 028X ROLL TIDE 612 (CHBS)(OLE,HVF,REF,MSUDF)
43693995 CRR 83Y AMBER 418 (OLE,HVF,REF,MSUDF)

UPS DOMINO 3027 (SOD)(OLE,HVF,REF,MSUDF)
CHURCHILL LADY 7202T ET (OLE,HVF,REF)
NJW 98S 100W HANDSHAKE 83Y (CHBS)(OLE,HVF,REF)
CRR 021 AMBER 2102

NJW 73S W18 HOMEROWN 8Y ET (OLE,HVF,REF,MSUDF)
DM 4128 8Y STACIE 486 ET (OLE,HVF,REF,MSUDF)
P43778207 DM BR STACIE 4128 ET

SHF WONDER M326 W18 ET (CHBS)(OLE,HVF,REF)
NJW P606 72N DAYDREAM 73S (OLE,HVF,REF,MSUDF)
REMITALL ONLINE 122L (SOD)(CHBS)(OLE,HVF,REF)
DM LI DOMINETTE 901 (OLE,HVF,REF)

BMS	349																	
BIIS	431	CE	BW	WW	YW	DMI	SC	SCF	MM	M&G	MCE	MCW	UDDR	TEAT	CW	FAT	REA	MARB
CHBS	108	-1.2	3.6	63	100	0.6	1.7	15.7	40	71	0.5	80	1.20	1.20	74	0.008	0.51	0.18

- This beautiful, uber long hipped, extended necked Stacie bred heifer will really produce some show heifers. Another pedigree that is packed full of maternal punch! Super nice level topped cow prospect.
- Sells safe in calf to the 2019 JNHE Champion Bull, CHEZ/PUGH/HARA Logic 8815F ET, with a due date of Jan. 26, 2020.



Lot 44 – MF 486 Stacie Tide 1810 ET



Lot 45 – MF 339A Goldie 711 76 ET

LOT 45 COW

MF 339A GOLDIE 711 76 ET

P44052872 – Calved: 2/10/19 – Tattoo: BE 76

ECR WHO MAKER 210 ET (OLE.HYF,REF)
 K RUSTIC 711 ET (OLE.HYF,REF,MSUDF) 43848894
 SULL TCC HARLEY 4069B ET (OLE.HYF,REF,MSUDF)

DKF RO CASH FLOW 0245 ET (S00)(OLE.HYF,REF)
 RV GOLDEN LADY 5064 (OLE.HYF,REF)
 C MILES MCKEE 2103 ET (CHB)(OLE.HYF,REF,MSUDF)
 LCC TWO TIMIN 438 ET (OLE.HYF,REF)

CRR ABOUT TIME 743 (S00)(OLE.HYF,REF)
 BBH 743 ADORA 339A (OLE.HYF,REF,MSUDF) P43407019
 BBH 711 TANYA 911W (000)

THM DURANGO 4037 (S00)(OLE.HYF,REF)
 CRR D03 CASSIE 206 (OLE.HYF,REF)
 DRF JWR PRINCE VICTOR 711 (S00)(OLE.HYF,REF,MSUDF)
 BBH 427P TANYA 756T

BMSIS	380																	
BIIS	444	CE	BW	WW	YW	DMI	SC	SCF	MM	M&G	MCE	MCW	UDDR	TEAT	CW	FAT	REA	MARB
CHBS	120	-3.6	4.7	60	97	0.1	1.0	17.5	28	58	-2.3	122	1.15	1.05	75	-0.022	0.61	-0.07

- The Adora daughters have dominated the junior national landscape the last several years, even boasting reserve national champion three times! This polled Adora is exceptional in her own right. Sound as a cat and stops on the profile in a fashion that makes you remember her. She has that show heifer sweep to her stomach that will give you that advantage in the show ring.

LOT 46 COW

MF 339A GWYNETH 711 1906 ET

P44052891 – Calved: 4/8/19 – Tattoo: BE 1906

ECR WHO MAKER 210 ET (OLE.HYF,REF)
 K RUSTIC 711 ET (OLE.HYF,REF,MSUDF) 43848894
 SULL TCC HARLEY 4069B ET (OLE.HYF,REF,MSUDF)

DKF RO CASH FLOW 0245 ET (S00)(OLE.HYF,REF)
 RV GOLDEN LADY 5064 (OLE.HYF,REF)
 C MILES MCKEE 2103 ET (CHB)(OLE.HYF,REF,MSUDF)
 LCC TWO TIMIN 438 ET (OLE.HYF,REF)

CRR ABOUT TIME 743 (S00)(OLE.HYF,REF)
 BBH 743 ADORA 339A (OLE.HYF,REF,MSUDF) P43407019
 BBH 711 TANYA 911W (000)

THM DURANGO 4037 (S00)(OLE.HYF,REF)
 CRR D03 CASSIE 206 (OLE.HYF,REF)
 DRF JWR PRINCE VICTOR 711 (S00)(OLE.HYF,REF,MSUDF)
 BBH 427P TANYA 756T

BMSIS	380																	
BIIS	444	CE	BW	WW	YW	DMI	SC	SCF	MM	M&G	MCE	MCW	UDDR	TEAT	CW	FAT	REA	MARB
CHBS	120	-3.6	4.7	60	97	0.1	1.0	17.5	28	58	-2.3	122	1.15	1.05	75	-0.022	0.61	-0.07

- Another Rustic/Adora this young flashy horned show heifer prospect is the real deal! Her silhouette and design is picture perfect. She is big footed, structurally sound and can compete at any level. It's easy to see why the Adora daughters have become some of the most sought after in the country.



Lot 46 – MF 339A Gwyneth 711 1906 ET



BBH 743 Adora 339A – Dam of Lots 45 and 46



Lot 47 – MF 104Y Gerry 711 15G ET



K Rustic 711 ET – Sire of Lots 45, 46 and 47

LOT 47 COW

MF 104Y GERRY 711 15G ET

44052883 – Calved: 3/15/19 – Tattoo: BE 15G

ECR WHO MAKER 210 ET (OLE.HVF.JEF)
 K RUSTIC 711 ET (OLE.HVF.JEF,MSUDF) 43848894
 SULL TCC HARLEY 4069B ET (OLE.HVF.JEF,MSUDF)

DKF RO CASH FLOW 0245 ET (SOD)(OLE.HVF.JEF)
 RV GOLDEN LADY 5064 (OLE.HVF.JEF)
 C MILES MCKEE 2103 ET (CHB)(OLE.HVF.JEF,MSUDF)
 LCC TWO TIMIN 438 ET (OLE.HVF.JEF)

CRR ABOUT TIME 743 (SOD)(OLE.HVF.JEF)
 MF 914W ABOUT YASMINE 104Y (OLE.HVF.JEF)
 P43212822 PCR MF LACEY DUTCHESS 914W (OLE.HVF.JEF)

THM DURANGO 4037 (SOD)(OLE.HVF.JEF)
 CRR D03 CASSIE 206 (OLE.HVF.JEF)
 HCC LEGACY S01 ET (SOD)(OLE.HVF.JEF)
 PCR DUTCHESS ANNE 657S (SOD)(OLE.HVF.JEF)

BMS	389																	
BIIS	453	CE	BW	WW	YW	DMI	SC	SCF	MM	M&G	MCE	MCW	UDDR	TEAT	CW	FAT	REA	MARB
CHBS	126	-3.9	3.5	53	89	0.2	0.7	17.5	30	56	-2.6	109	1.20	1.15	79	-0.022	0.72	0.06

- Top notch horned Rustic daughter out of our super donor Yasmine. The Yasmine offspring have been very popular at DeLHawk with several daughters winning divisions at junior nationals and even in Denver. This one is super green now but just needs time to be super competitive in the horned division down the road. She is striking from the side and her neck comes so elegantly high out of her shoulder.

LOT 48 COW

MF D216 GENEVIEVE 6026D 904G

P44052905 – Calved: 2/22/19 – Tattoo: BE 904G

C STOCKMAN 2059 ET (CHB)(OLE.HVF.JEF)
 B&C STOCK OPTION 6026D ET (OLE.HVF.JEF,MSUDF) 43719224
 B&C MISS TOP GUN 2031Z IET (OLE.HVF.JEF,MSUDF)

NJW 98S R117 RIBEYE 88X ET (SOD)(OLE.HVF.JEF,MSUDF)
 C NOTICE ME ET (OLE.HVF.JEF)
 GH ADAMS TOP GUN ET 516T (OLE.HVF.JEF)
 B&C MS CHRISTI 27031 (OLE.JEF)

NJW 73S M326 TRUST 100W ET (SOD)(CHB)(OLE.HVF.JEF,MSUDF)
 CLF GCC MISS D D216
 P43665558 GOBLE LADY LUCK 329Y ET

KCF BENNETT 3008 M326 (SOD)(OLE.HVF.JEF)
 NJW P606 72N DAYDREAM 73S (OLE.HVF.JEF,MSUDF)
 RVP STAR 533P CAN-AM ET 57U (OLE.HVF.JEF)
 LAKE LADY 225U (OLE.HVF.JEF)

BMS	361																	
BIIS	432	CE	BW	WW	YW	DMI	SC	SCF	MM	M&G	MCE	MCW	UDDR	TEAT	CW	FAT	REA	MARB
CHBS	120	-1.6	4.8	54	89	0.0	1.0	15.7	27	54	1.7	101	1.05	1.10	72	-0.017	0.62	0.15

- Good quality livestock are built from the ground up and this daughter of Supreme Champion in Denver, Stock Options have all the right running gear! This soft made, moderate beauty really balances up from the side a great deal.



Lot 48 – MF D216 Genevieve 6026D 904G



Lot 49 – LBB Martha 13F



KJ 969A Ribeye F8 ET – Service sire of Lot 49



Lot 50 – MF 5C Finley Face 6026D 12F ET



Lot 51 – AHF Flash That Ribeye R17 722

LOT 49 COW

LBB MARTHA 13F

P43937074 – Calved: 1/15/18 – Tattoo: LE 13F

NJW 73S W18 HOMETOWN 10Y ET (SBO)(CHB)(OLE,NFY,REF,MSUDF)
 CHURCHILL PILGRIM 632D ET (OLE,NFY,REF,MSUDF)
 P43703019 CHURCHILL LADY 002X ET (OLE,NFY,REF,MSUDF)

SHF WONDER M326 W18 ET (CHB)(OLE,NFY,REF)
 NJW P606 72N DAYDREAM 73S (OLE,NFY,REF,MSUDF)
 GOLDEN OAK OUTCROSS 18U (SBO)(CHB)(OLE,NFY,REF,MSUDF)
 CHURCHILL LADY 600S ET (OLE,NFY,REF)

BOYD MASTERPIECE 0220 (SBO)(OLE,NFY,REF,MSUDF)
 BOYD MISS MARTHA 4076
 P43472263 BOYD MARTHA 1044 (SBO)

SHF RIB EYE M326 R117 (SBO)(OLE,NFY,REF)
 SSF P606 MS VICTOR 803 (OLE,NFY,REF)
 BOYD WORLDWIDE 9050 ET (SBO)(OLE,NFY,REF,MSUDF)
 JJD BROOK 6004 (OLE,NFY,REF)

BMSI	369																	
BIIS	446	CE	BW	WW	YW	DMI	SC	SCF	MM	M&G	MCE	MCW	UDDR	TEAT	CW	FAT	REA	MARB
CHBS	95	-2.0	4.5	63	106	0.6	1.2	18.6	29	61	-4.1	86	1.20	1.30	63	-0.002	0.37	0.06

- It's easy to see why the Pigrims are so popular; easy to find and look at! This very practical, bigger bodied, soft topped powerhouse sure has cow power wrote all over her. She excels in her underline as she is the most open in her heart and deepest in her rear flank.
- Sells safe to our new Jensen bull, KJ 969A Ribeye F8, who we are very excited about with a due date of March 24, 2020.

LOT 50 COW

MF 5C FINLEY FACE 6026D 12F ET

P43935129 – Calved: 4/19/18 – Tattoo: BE 12F

C STOCKMAN 2059 ET (CHB)(OLE,NFY,REF)
 B&C STOCK OPTION 6026D ET (OLE,NFY,REF,MSUDF)
 43719224 B&C MISS TOP GUN 2031Z 1ET (OLE,NFY,REF,MSUDF)

NJW 98S R117 RIBEYE 88X ET (SBO)(OLE,NFY,REF,MSUDF)
 C NOTICE ME ET (OLE,NFY,REF)
 GH ADAMS TOP GUN ET 516T (OLE,NFY,REF)
 B&C MS CHRISTI 27031 (OLE,REF)

CHAC MASON 2214 (CHB)(OLE,NFY,REF)
 RIL LCC MISS POKER FACE 5C ET (OLE,NFY,REF,MSUDF)
 P43616064 SRH MISS KITTY 1001 ET (OLE,NFY,REF)

CRR ABOUT TIME 743 (SBO)(OLE,NFY,REF)
 GKB 31 GRACE 7100 (OLE,NFY,REF)
 UPS TCC NITRO 1ET (SBO)(CHB)(OLE,NFY,REF)
 4C 511 DAYTONA MISS 661 (OLE,NFY,REF)

BMSI	287																	
BIIS	348	CE	BW	WW	YW	DMI	SC	SCF	MM	M&G	MCE	MCW	UDDR	TEAT	CW	FAT	REA	MARB
CHBS	115	-3.7	6.4	54	89	0.0	0.8	11.3	24	51	0.4	99	1.00	0.90	69	-0.012	0.63	0.04

- A pedigree of royalty here! This super stout, big footed, powerfully made bred heifer is our of seven time national champion, Poker Face and by our supreme champion bull, Stock Option. A full sister was second in class both in Louisville and Denver.
- Sells safe in calf to the 2019 JNHE Champion Bull, CHEZ/PUGH/HARA Logic 8815F ET, with a due date of Feb. 11, 2020.

LOT 51 COW

AHF FLASH THAT RIBEYE R117 722

P43806664 – Calved: 2/22/17 – Tattoo: BE A722

KCF BENNETT 3008 M326 (SBO)(OLE,NFY,REF)
 SHF RIB EYE M326 R117 (SBO)(OLE,NFY,REF)
 P42584003 HVH MISS HUDSON 83K 8M

RRH MR FELT 3008 (SBO)(CHB)(OLE,NFY,REF)
 KCF MISS 459 F284
 MSU MF HUDSON 19H (SBO)(OLE,NFY,REF)
 SUN VINDY MISS 83K

PCR ONLINE ET 318N
 RM MISS WISDOM 927
 P43016817 JM MISS WISDOM 9507

REMITALL ONLINE 122L (SBO)(CHB)(OLE,NFY,REF)
 PCR GOLDEN GAL 443D
 RKM SUPER GUY 9304
 BRUSCH 135 VICKY 718

BMSI	381																	
BIIS	454	CE	BW	WW	YW	DMI	SC	SCF	MM	M&G	MCE	MCW	UDDR	TEAT	CW	FAT	REA	MARB
CHBS	104	-0.4	4.2	52	83	-0.1	1.0	18.5	21	47	0.0	78	1.10	1.10	58	-0.042	0.25	0.15

- This two-year old R117 daughter had the misfortune of losing her calf to a freak accident. We so wish you could have seen her wet as she really sported a gorgeous udder full of milk. This high performing youngster is just entering her prime.
- Sells safe in calf to the 2019 JNHE Champion Bull, CHEZ/PUGH/HARA Logic 8815F ET, with a due date of March 3, 2020.



Lot 52A – MF 9D Georgia 119D 906G

LOT 52 COW

RVP 100W DARLING 9D

P44053105 – Calved: 1/4/16 – Tattoo: RE RVP9D

KCF BENNETT 3008 M326 (S00)(DLE,HVE,JEF)
 NJW 73S M326 TRUST 100W ET (S00)(CHB)(DLE,HVE,JEF,MSUDF)
 P43002897 NJW P606 72N DAYDREAM 73S (DLE,HVE,JEF,MSUDF)

RRH MR FELT 3008 (S00)(CHB)(DLE,HVE,JEF)
 KCF MISS 459 F284
 PW VICTOR BOOMER P606 (S00)(DLE,HVE,JEF)
 NJW 94J DEW 72N (DLE,HVE,JEF)

MSU XEROX 20X (CHB)(DLE,HVE,JEF,MSUDF)
 DOSS FISHIN IN THE DARK DHZ8
 P43265057 FTF CLASSY LADY 621S (D00)(DLE,HVE,JEF)

CRR ABOUT TIME 743 (S00)(DLE,HVE,JEF)
 MSU TCF RACHAEL ET 54N (DLE,HVE,JEF)
 DR WORLD CLASS 517 10H (S00)(DLE,HVE,JEF)
 FTF CANDACE 039K

BMSIS	475																	
BIIS	551	CE	BW	WW	YW	DMI	SC	SCF	MM	M&G	MCE	MCW	UDDR	TEAT	CW	FAT	REA	MARB
CHBS	130	4.5	2.4	58	95	0.0	1.3	22.8	29	58	6.1	124	1.30	1.20	77	-0.022	0.64	0.11

- Super sweet profiling young Trust daughter that is robust about her rib cage and capacious in her center body. She is full of milk in a neat udder and has proved her value with the real complete heifer calf at her side.
- Sells safe in calf to the 2019 JNHE Champion Bull, CHEZ/PUGH/HARA Logic 8815F ET, with a due date of Feb. 2, 2020.

LOT 52A COW

MF 9D GEORGIA 119D 906G

P44053239 – Calved: 3/11/19 – Tattoo: BE 906G

SHF WONDER M326 W18 ET (CHB)(DLE,HVE,JEF)
 RVP W18 DIRECTION ET 119D
 P44049447 STAR ROSE GARDON 13X ET (DLE,HVE,JEF)

KCF BENNETT 3008 M326 (S00)(DLE,HVE,JEF)
 SHF GOVERNESS 236G L37 (DLE,HVE,JEF)
 REMITALL ONLINE 122L (S00)(CHB)(DLE,HVE,JEF)
 GERBER 774 ROSY LANE 623S (DLE,HVE,JEF)

NJW 73S M326 TRUST 100W ET (S00)(CHB)(DLE,HVE,JEF,MSUDF)
 RVP 100W DARLING 9D
 P44053105 DOSS FISHIN IN THE DARK DHZ8

KCF BENNETT 3008 M326 (S00)(DLE,HVE,JEF)
 NJW P606 72N DAYDREAM 73S (DLE,HVE,JEF,MSUDF)
 MSU XEROX 20X (CHB)(DLE,HVE,JEF,MSUDF)
 FTF CLASSY LADY 621S (D00)(DLE,HVE,JEF)

BMSIS	347																	
BIIS	423	CE	BW	WW	YW	DMI	SC	SCF	MM	M&G	MCE	MCW	UDDR	TEAT	CW	FAT	REA	MARB
CHBS	123	6.0	1.6	55	91	0.0	1.4	14.6	26	54	5.8	99	1.25	1.25	74	0.003	0.54	0.20

- A really bright future awaits this cow prospect that we like even better maybe than momma. As you study this super smooth made girl that is so good on her feet and legs you just can't find a hole in her. Will be ultra-productive down the road.



Lot 52 – RVP 100W Darling 9D



DHZ8



Lot 53 – MF 3Z Gilead 743 2G ET

LOT 53 BULL

MF 3Z GILEAD 743 2G ET

P44052898 – Calved: 1/3/19 – Tattoo: BE 2G

LOT 54 BULL

MF 3Z GIDEON 743 1G ET

P44052899 – Calved: 1/1/19 – Tattoo: BE 1G

THM DURANGO 4037 (S00)(OLE.HYF.HEF)
 CRR ABOUT TIME 743 (S00)(OLE.HYF.HEF)
 P42797564 CRR D03 CASSIE 206 (OLE.HYF.HEF)

CS BOOMER 29F (S00)(OLE.HYF.HEF)
 THM 7085 VICTRA 9036 (OLE.HYF.HEF)
 SHF INTERSTATE 20X D03 (S00)(OLE.HYF.HEF)
 CRR 475E CASSIE 838

TH 122 71I VICTOR 719T (S00)(OLE.HYF.HEF.MS00F)
 WLL ZOEY 3Z (OLE.HYF.HEF)
 P43333321 WLL VENUS 19X

DRF JWR PRINCE VICTOR 71I (S00)(OLE.HYF.HEF.MS00F)
 KBCR 19D DOMINETTE 122 (OLE.HYF.HEF)
 ELM-LODGE NEXT BIG THING 3N
 KIRBY-LONEPINE SYBIL ET 544U

BMS	475																	
BIIS	543	CE	BW	WW	YW	DMI	SC	SCF	MM	M&G	MCE	MCW	UDDR	TEAT	CW	FAT	REA	MARB
CHBS	101	1.3	2.1	58	87	0.4	0.9	25.5	30	59	-0.6	96	1.15	1.20	67	-0.032	0.51	-0.06

- Maternal brothers to the popular Perfecto bull by About Time! These two super sound bulls are made the right way and have a tremendous upside to them. 1G is really extended in his head/neck, super clean fronted and wide topped. 2G is a thick ended, wide pinned, burly made bull and is fuller in his stifle and quarter.



Lot 54 – MF 3Z Gideon 743 1G ET



Lot 55 – MF 3Z Geema 743 3G ET



MF 3Z GEEMA 743 3G ET

P44052896 – Calved: 1/4/19 – Tattoo: BE 36

THM DURANGO 4037 (S00)(OLE.HYF.JEF)
 CRR ABOUT TIME 743 (S00)(OLE.HYF.JEF)
 P42797564 CRR D03 CASSIE 206 (OLE.HYF.JEF)

CS BOOMER 29F (S00)(OLE.HYF.JEF)
 THM 7085 VICTRA 9036 (OLE.HYF.JEF)
 SHF INTERSTATE 20X D03 (S00)(OLE.HYF.JEF)
 CRR 475E CASSIE 838

TH 122 711 VICTOR 719T (S00)(OLE.HYF.JEF.MSDP)
 WLL ZOEY 3Z (OLE.HYF.JEF)
 P43333321 WLL VENUS 19X

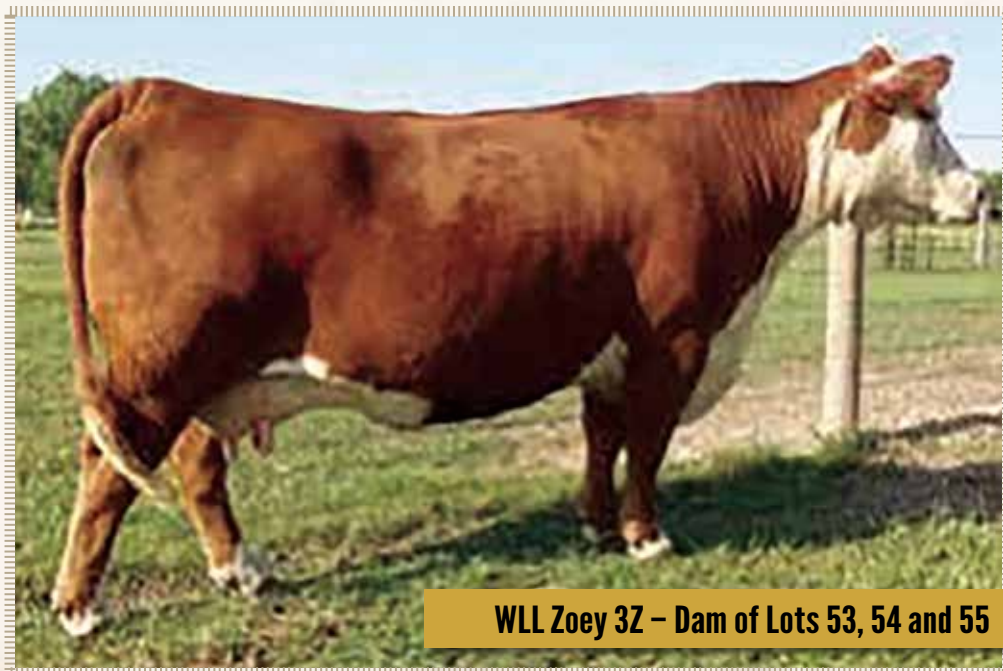
DRF JWR PRINCE VICTOR 711 (S00)(OLE.HYF.JEF.MSDP)
 KBCR 19D DOMINETTE 122 (OLE.HYF)
 ELM-LODGE NEXT BIG THING 3N
 KIRBY-LONEPINE SYBIL ET 544U

BMSIS	475																	
BIIS	543	CE	BW	WW	YW	DMI	SC	SCF	MM	M&G	MCE	MCW	UDDR	TEAT	CW	FAT	REA	MARB
CHBS	101	1.3	2.1	58	87	0.4	0.9	25.5	30	59	-0.6	96	1.15	1.20	67	-0.032	0.51	-0.06

- This super kid friendly daughter of About Time is out of the popular donor cow, WLL Zoey 3Z, who really has made a name for herself for Larry Crane and the Hoffman Ranch. Super long spine, giraffe necked with a lot of bone this bigger framed heifer has lots of potential.



LCX Perfecto 11B ET



WLL Zoey 3Z – Dam of Lots 53, 54 and 55



LCC 122L Lady A 8Y – Dam of Lot 56

LOT
56
COW

MF 8Y GINNY 58A 903G

P44053210 – Calved: 2/21/19 – Tattoo: BE 903G

THM DURANGO 4037 (S000)(OLE,HYF,IEF)
PURPLE JOE DIRT 58A ET (OLE,HYF,IEF)
P43416538 PURPLE DIRTY DIANA 18V (OLE,HYF,IEF)

CS BOOMER 29F (S000)(OLE,HYF,IEF)
THM 7085 VICTRA 9036 (OLE,HYF,IEF)
LAGRAND RELOAD 80P ET (S000)(CHB)(OLE,HYF,IEF)
JH MISS SUSIE 06L

REMITALL ONLINE 122L (S000)(CHB)(OLE,HYF,IEF)
LCC 122L LADY A 8Y ET
P43187911 HH MISS ADVANCE 232M (OLE,HYF,IEF)

REMITALL EMBRACER 8E (S000)(HYF)
REMITALL CATALINA 24H
HH ADVANCE 836H (S000)(OLE,HYF,IEF)
HH MS ADV 898H 1ET (S000)

BMSIS	296																	
BIIS	366	CE	BW	WW	YW	DMI	SC	SCF	MM	M&G	MCE	MCW	UDDR	TEAT	CW	FAT	REA	MARB
CHBS	114	-0.1	4.1	63	102	0.4	0.9	12.2	24	56	2.5	112	1.05	1.05	77	0.008	0.54	0.03

LOT
Ref
SIRE

CHEZ/PUGH/HARA LOGIC 8815F ET {OLF,HYF,IEF,MSUDF}

P43964617 – Calved: 2/23/18 – Tattoo: LE 8815F

TH 122 711 VICTOR 719T (S000)(OLE,HYF,IEF,MSUDF)
CRR 719 CATAPULT 109 (OLE,HYF,IEF)
P43186342 CRR 4037 ECLIPSE 808 (OLE,HYF,IEF)

DRF JWR PRINCE VICTOR 711 (S000)(OLE,HYF,IEF,MSUDF)
KBCR 19D DOMINETTE 122 (OLE,HYF,IEF)
THM DURANGO 4037 (S000)(OLE,HYF,IEF)
CRR 420 ECLIPSE 688 (OLE,HYF,IEF)

MSU TCF REVOLUTION 4R (S000)(CHB)(OLE,HYF,IEF)
R SWEET RED WINE 039 (OLE,HYF,IEF)
P43011682 R MISS WRANGLER 207 (OLE,HYF,IEF)

FELTONS LEGEND 242 (S000)(HYF)
MSU TCF RACHAEL ET 54N (OLE,HYF,IEF)
R WRANGLER 4640 (S000)
R MISS PAGE 1185

BMSIS	400																	
BIIS	471	CE	BW	WW	YW	DMI	SC	SCF	MM	M&G	MCE	MCW	UDDR	TEAT	CW	FAT	REA	MARB
CHBS	99	2.1	2.0	58	89	0.4	1.0	20.3	26	55	2.4	92	1.10	1.10	70	0.018	0.45	0.02

- Really unique female out of our can't miss LCC Online daughter 8Y. This jet fronted, level topped, great haired Joe Dirt daughter could really hunt in the show ring and go on to make a foundation female. A maternal sister was the popular top selling bred heifer a year ago.
- Unfortunately, she wasn't available on picture day, but come sale day she will be one to look for!



CHEZ/PUGH/HARA Logic 8815F ET

NOTES

Arriving the night before?

Please contact Jami Goble for hotel room – 616-366-6533 – jami@ridgeviewfarm-goble.com

Ridgeview Farm

Bob & Jami Goble

Bob and Jami Goble
11554 100th St.
Alto, MI 49302
616-299-8681

jami@ridgeviewfarm-goble.com

Lots 1-18

**LANDRUM
FAMILY FARMS**

1412 W. 900 S.
Warren, IN 46792
Thatcher 260-917-0177
Joe 260-466-8149
Jane 260-917-0036

Lots 19-31

GMF

• grand meadows farm •

Dave and Jill Bielema Family
greatlakesherefordbeef@gmail.com
grandmeadowsfarm.com
616-292-7474

Lots 32-40

mf
McDonald Farm

Scott McDonald
7791 Easter Ave. S.E.
Grand Rapids, MI 49508
616-446-2146
scott@mcdonaldplumbing.com

Lots 41-56

Ridgeview Farm

Bob and Jami Goble

11554 100th St.

Alto, MI 49302

www.ridgeviewfarm-goble.com



Duke