

Sunday, October 11th

DEFINITELY DIFFERENT 2020

12 p.m. (EST) - 11554 100th St., Alto, MI 49302



Ridgeview Farm

Bob & Jami Goble



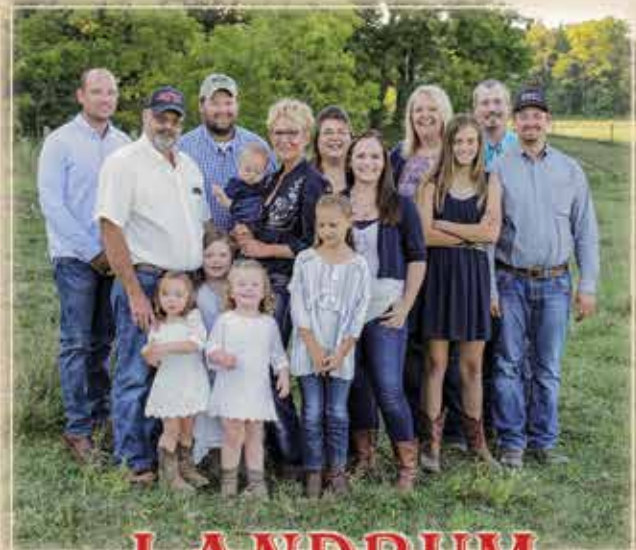
mf

McDonald Farms



GMF

• grand meadows farm •



**LANDRUM
FAMILY FARMS**



Ridgeview Farm

Bob & Jami Goble

11554 100th St.
Alto, MI 49302
616-299-8681

jami@ridgeviewfarm-goble.com



The Goble family welcomes you to the 2020 edition of Definitely Different.

Is 2020 over yet? Where do you start to talk about it and will there ever be an end? It has been one crazy ride this year.

Here at Ridgeview the family is good. Jami's side business, selling meat, is doing great and became in high demand this year. I commend her on balancing her business, family and extra tasks daily.

As for the crops, they look okay. Hay is a little scarce, but really good quality. Pastures were hurt by insects this spring and have held out until now, but a shot or two of rain, to at least to give us the impression that grass isn't supposed to be brown, would be nice.

The cattle have done well and we are really impressed by the Duke offspring, so much that we turned out his first son on all the cows this spring. He was Lot X in our last years sale, purchased by In'tHout. He combines Duke, Revolution 4R X Trust and, in my opinion, the best Kilowatts daughter ever raised here with Peaches on the dam side.

All the consignors have faced this pandemic with the vision of bringing the best they have to offer again this year. There is no doubt, in my mind, these people always put their customers first through not only friendship, but support after the transaction is made. They will help anyone with questions, matings, semen and/or show feeding. Whatever questions you may have, they will be answered to make the most of anyone's investment. We welcome you to the sale this year with excitement for the future of the beef business.

LiveAuctions will be managing the online live bidding this year. It has been expressed to us that our customers are very comfortable with how they conduct business. All the consignors and sale staff are just an email or phone call away. They are willing to assist you if you can't make the trip to the sale.

In closing, I would like to send out a special thank you to Dave and Vicki Rollins for their continued support and friendship. We look forward to seeing you the second Sunday in October to see this exciting offering!

**Regards,
Bob**

Ridgeview Farm
Bob & Jami Goble

Bob and Jami Goble
11554 100th St.
Alto, MI 49302
616-299-8681
jami@ridgeviewfarm-goble.com

Lots 1-21

**LANDRUM
FAMILY FARMS**

1412 W. 900 S.
Warren, IN 46792
Thatcher 260-917-0177
Joe 260-466-8149
Jane 260-917-0036

Lots 22-30

GMF

• grand meadows farm •

Dave and Jill Bielema Family
greatlakesherfordbeef@gmail.com
grandmeadowsfarm.com
616-292-7474

Lots 31-35

mf

McDonald Farm

Scott McDonald
7791 Eastern Ave. S.E.
Grand Rapids, MI 49508
616-446-2146
scott@mcdonaldplumbing.com

Lots 36-54

Sunday, Oct. 11, 2020 • 12 p.m. (EST)

Bob's cell 616-299-8681 • Jami's cell 616-366-6533

GPS Address: 11554 100th St., Alto, MI 49302

Terms and Conditions

Sale Date & Time: Sunday, October 11, 2020, 12 p.m. (EST)

Location: At the farm in Alto, Mich. I-96 west towards Grand Rapids, Exit 52 (Hwy. 50) south to 100th Street, west 1/2 mile on north side.

Sale Day Phone: Any consignor or Sale Staff will be more than happy to assist.

Registration Certificates: It is the buyer's responsibility to provide seller with the correct name, address and breeder number for transfer of animal.

EPDs: EPDs given are the most current at the time of print.

Liability: Each animal will be the buyer's responsibility as soon as it is sold, but will be cared for a reasonable length of time. Normal precautions will be taken for each animal.

Guarantee: The cattle will sell in accordance to the recommended terms and conditions of the American Hereford Association.

Trucking: We will help arrange trucking at the least possible cost to central drop off points. Trucking expense will be pre-paid at time of settlement.

Transfers: Cattle will not be transferred until paid in full.

Health: Proper health papers will be available. Brucellosis Free and Whole Herd TB tested.

AI Certificates: AI certificates will not be provided unless AI bull is owned by the seller.

Insurance: Insurance will be available through Harding and Harding.

Lunch: Lunch will be provided on Sale Day.

Bids: The auctioneer in charge will have final say in regards to all final bids. We hope everyone can attend, but for those who cannot, you may contact any owner or staff. LiveAuctions will be at the sale for live online bidding as well.

Air Travel: Grand Rapids airport is less than 30 minutes from the farm. If you need pick up arrangements, please let Jami know.

Accommodations: Please contact Jami for a reservation. jami@ridgeviewfarm-goble.com, 616-366-6533 cell.

Sale Book Material: Statements made from the auction block precede any written material.

Genetic Defects: All cattle are free of genetic defects recognized by the American Hereford Assn. as of October 11, 2020.

Sale Staff

Cody Lowderman, Auctioneer	309-313-2171
Dale Stith, Auctioneer	918-760-1550
John Meents, AHA/Hereford World	419-306-7480
Lou Ellen Harr, J&L Cattle Services	419-685-0549
Gene Steiner, Steiner Auctions	513-616-4086
Cody Crum, Livestock Plus	217-248-7282

Consignor Contact

Bob Goble	616-299-8681
Jami Goble	616-366-6533
Joe Landrum	260-466-8149
Thatcher Landrum	260-917-0177
Dave Bielema	616-292-7474
Scott McDonald	616-446-2146

Cattle Viewing and Social

Cattle Viewing at 9 a.m., Sunday, Oct. 11, 2020

If you are arriving the night before from out of town, please give us a call.

LiveAuctions.TV_{2.0}

Online Bidding Platform

Live audio and live video will allow buyers to bid on animals as if they were present at the sale.

Buyers must create an account prior to the sale.

Please visit <http://LiveAuctions.tv> to create an account.

Contact Katie Colyer at 208-599-2962



Goble Miss Trust 301B – Dam of Lot 1

Lot 1 – Goble Rollins Miss Sensa 103H



GOBLE ROLLINS MISS SENSА 103H

P44167821 – Calved: 2/6/20 – Tattoo: RE: BJG/LE: 103H

CHURCHILL SENSATION 028X (S00)(DLF,HYF,EE,MSDF)
 UPS SENSATION 2296 ET (DLF,HYF,EE,MSDF,MDF)
 43311175 UPS JT MISS NEON 7811 1ET (DLF,HYF,EEF)

UPS DOMINO 3027 (S00)(DLF,HYF,EE,MSDF)
 CHURCHILL LADY 7202T ET (DLF,HYF,EEF)
 GH NEON 17N (S00)(CHB)(DLF,HYF,EE,MSDF)
 LCC TWO TIMIN 438 ET (DLF,HYF,EEF)

NJW 73S M326 TRUST 100W ET (S00)(CHB)(DLF,HYF,EE,MSDF)
 GOBLE MISS TRUST 301B
 P43468522 LCC 7067 LULLABY 139

KCF BENNETT 3008 M326 (S00)(DLF,HYF,EE,MSDF)
 NJW P606 72N DAYDREAM 73S (DLF,HYF,EE,MSDF)
 JJD LCC LIMIT UP 7067
 LCC 413 DREAM GIRL 6131 (DLF,HYF,EEF)

BMSI	370																	
BIIS	443	CE	BW	WW	YW	DMI	SC	SCF	MM	M&G	MCE	MCW	UDDR	TEAT	CW	FAT	REA	MARB
CHBS	114	1.3	4.1	64	103	0.5	1.0	17.1	36	68	3.5	99	1.30	1.40	74	-0.007	0.68	0.02

- A super fancy show prospect. Her dam was a \$12,000 selection by Rollins Herefords in an earlier sale and heifer calf champion at the Toronto Royal Winter show.
- Co-owned with Rollins Herefords



GOBLE ROLLINS MISS G 104H

P44119177 – Calved: 2/17/20 – Tattoo: RE: BJG/LE: 104H

CHURCHILL SENSATION 028X (S00)(DLF,HYF,EE,MSDF)
 UPS SENSATION 2296 ET (DLF,HYF,EE,MSDF,MDF)
 43311175 UPS JT MISS NEON 7811 1ET (DLF,HYF,EEF)

UPS DOMINO 3027 (S00)(DLF,HYF,EE,MSDF)
 CHURCHILL LADY 7202T ET (DLF,HYF,EEF)
 GH NEON 17N (S00)(CHB)(DLF,HYF,EE,MSDF)
 LCC TWO TIMIN 438 ET (DLF,HYF,EEF)

NJW 98S R117 RIBEYE 88X ET (S00)(DLF,HYF,EE,MSDF,MDF)
 DELHAWK GRETCHEN 56B ET
 P43492830 TH 557E 57G BURGUNDY 33N (DLF,HYF,EEF)

SHF RIB EYE M326 R117 (S00)(DLF,HYF,EEF)
 NJW 9126J DEW DOMINO 98S (D00)(DLF,HYF,EEF)
 RU 20X BOULDER 57G (S00)
 MEB5 707B BURGUNDY 557E

BMSI	388																	
BIIS	455	CE	BW	WW	YW	DMI	SC	SCF	MM	M&G	MCE	MCW	UDDR	TEAT	CW	FAT	REA	MARB
CHBS	99	5.9	2.0	54	85	0.0	0.6	19.3	33	59	4.5	68	1.40	1.40	60	0.013	0.47	0.05

- This lady will make a fun junior show heifer. A full brother sold in our 2019 sale sold to the Chris Decker Family in Michigan.
- Sired by the dominant 2296 that has owned the show ring over the past few years. Her dam was the high seller in our sale a few years back selling to Rollins Herefords in Indiana.
- Co-owned with Rollins Herefords



DelHawk Gretchen 56B ET

Lot 2 – Goble Rollins Miss G 104H



Goble Miss Gorgeous 206F – Full sister to Lot 3

Lot 3 – Goble Pretty Lady 304H

LOT
3
COW

GOBLE PRETTY LADY 304H

P44119169 – Calved: 3/1/20 – Tattoo: RE: BJG/LE: 304H

NJW 73S M326 TRUST 100W ET (S00)(CHR)(DLF,HYF,HEE,MSUDF)
RVP 100W DUKE 31D (DLF,HYF,HEF,MSUDF)
P43769388 SRF AFFECTION 138A

KCF BENNETT 3008 M326 (S00)(DLF,HYF,HEF,MDF)
NJW P606 72N DAYDREAM 73S (DLF,HYF,HEF,MSUDF)
MSU TCF REVOLUTION 4R (S00)(CHR)(DLF,HYF,HEF)
BYEVISTA 138 WARDEN 138Y

KJ 2403 RECRUIT 966R (S00)(DLF,HYF,HEF)
TRENT-HILL MYRA 1Z
P43769377 TRENT-HILL WYNIFRED 11W

ALLENDALE ROBIN HOOD (S00)(DLF,HYF,HEF)
MARK DOMETTE MR 2403 (D00)
FORC 29F BOOMER 18L (CHR)
EJM MISS PENNY 14P

BMSIS	308	CE	BW	WW	YW	DMI	SC	SCF	MM	M&G	MCE	MCW	UDDR	TEAT	CW	FAT	REA	MARB	
BIIS	370	2.5	2.8	54	89	0.2	1.1	12.7	27	54	1.7	101	1.20	1.20	75	-0.007	0.54	0.04	
CHBS	119																		

- Myra did it again! This is the third full sister being offered and as you can see from the 2-year-old, 206F, this family makes brood cows.
- Her two full sisters are now working for River Valley Polled Herefords in Ontario. The Duke daughters are making nice maternal packages.

LOT
4
COW

GOBLE PRETTY THING 302H

P44119192 – Calved: 3/1/20 – Tattoo: RE: BJG/LE: 302H

NJW 73S M326 TRUST 100W ET (S00)(CHR)(DLF,HYF,HEE,MSUDF)
RVP 100W DUKE 31D (DLF,HYF,HEF,MSUDF)
P43769388 SRF AFFECTION 138A

KCF BENNETT 3008 M326 (S00)(DLF,HYF,HEF,MDF)
NJW P606 72N DAYDREAM 73S (DLF,HYF,HEF,MSUDF)
MSU TCF REVOLUTION 4R (S00)(CHR)(DLF,HYF,HEF)
BYEVISTA 138 WARDEN 138Y

GCC JPF EXCITER A222 (DLF,HYF,HEF)
GOBLE SANDY 406C
P43622285 RM GKT STOCKER 338

LAKE 002 KILOWATTS 104S (DLF,HYF,HEF)
JPF K01 HONEY U30
GOBLE KILLIN TIME 209X
NPH 10H MS STOCKER 11R

BMSIS	301	CE	BW	WW	YW	DMI	SC	SCF	MM	M&G	MCE	MCW	UDDR	TEAT	CW	FAT	REA	MARB	
BIIS	362	-0.3	3.2	54	92	0.1	1.0	12.0	23	50	1.3	109	1.20	1.10	75	-0.017	0.59	0.03	
CHBS	122																		

- A short marked, beautiful profiling Duke daughter that exhibits a bit of extra growth. She lives up to her name "Pretty Thing"!
- Her dam always weans one of the heaviest calves.



RVP 100W Duke 31D

Lot 4 – Goble Pretty Thing 302H



Goble JPF Miss Kilowatts Z208

**LOT
5
COW**

GOBLE PARKS MISS ENTICE D208

P43665562 – Calved: 2/4/16 – Tattoo: LE: D208

LAKE 002 KILOWATTS 104S (DLE,HYF,REF)
GCC JPF LBB ENTICER A117 (DLE,HYF,REF)
P43357507 JPF K01 MS EMBRACE U11

NS LAKES KILO 002
TNJ VICK NIKI 9104 9207C
STAR TRF 8006 EMBRACER 229 ET
JPF 315 DREAM K01

LAKE 002 KILOWATTS 104S (DLE,HYF,REF)
GOBLE JPF MISS KILOWATTS Z208
P43449105 JPF K01 MS EMBRACE U11

NS LAKES KILO 002
TNJ VICK NIKI 9104 9207C
STAR TRF 8006 EMBRACER 229 ET
JPF 315 DREAM K01

BMSI	273																	
BIIS	331	CE	BW	WW	YW	DMI	SC	SCF	MM	M&G	MCE	MCW	UDDR	TEAT	CW	FAT	REA	MARB
CHBS	100	-1.2	3.9	56	83	0.2	0.7	12.0	12	40	-2.9	79	1.40	1.40	65	-0.027	0.42	-0.05

- Line breeding at its best. She is the product of a full brother, full sister mating and it is working well as evidenced by her fat, fancy heifer calf.
- Pasture exposed to Goble Conquest 317F from May 2 to August 20, 2020. Safe in calf.

**LOT
5A
COW**

GOBLE MISS D 317H

P44167806 – Calved: 3/24/20 – Tattoo: RE: 317H/LE: BJG

NJW 73S M326 TRUST 100W ET (SDD)(CHB)(DLE,HYF,REF,MSUDF)
RVP 100W DUKE 31D (DLE,HYF,REF,MSUDF)
P43769388 SRF AFFECTION 138A

KCF BENNETT 3008 M326 (SDD)(DLE,HYF,REF,MDF)
NJW P606 72N DAYDREAM 73S (DLE,HYF,REF,MSUDF)
MSU TCF REVOLUTION 4R (SDD)(CHB)(DLE,HYF,REF)
BYEVISTA 138 WARDEN 138Y

GCC JPF LBB ENTICER A117 (DLE,HYF,REF)
GOBLE PARKS MISS ENTICE D208
P43665562 GOBLE JPF MISS KILOWATTS Z208

LAKE 002 KILOWATTS 104S (DLE,HYF,REF)
JPF K01 MS EMBRACE U11
LAKE 002 KILOWATTS 104S (DLE,HYF,REF)
JPF K01 MS EMBRACE U11

BMSI	317																		
BIIS	383	CE	BW	WW	YW	DMI	SC	SCF	MM	M&G	MCE	MCW	UDDR	TEAT	CW	FAT	REA	MARB	
CHBS	118	0.8	2.9	58	95	0.3	1.0	13.3	20	49	1.1	109	1.30	1.20	75	-0.017	0.61	0.04	

- A bit younger and needed a photo as she is one that certainly has the potential to hit the show ring. She has the cosmetics and style to draw attention.



Lot 6 – Harvie Ms Duchess 104D



Lot 6A – Goble Miss D 316H

**LOT
6
COW**

HARVIE MS DUCHESS 104D

P44053192 – Calved: 2/7/16 – Tattoo: RE: CVIH104D

KIDMAN BLIGH D99
KANIMBLA FULL BOTTLE H117 (MDF)
P44016893 KANIMBLA MARITANA B06

BOWEN TORNADO Z260
KIDMAN CONSTANCE W109
GLENLEES 73J BOLD 300M ET
KANIMBLA MARITANA X13

BNMHPH 13P HEAT 101S (MDF)
MHPH RCY 101S DUCHESS 110Z
P44053190 MHPH MS 533P DUCHESS ET 1291W

REMITALL PATRIOT ET 13P (SDD)(DLE,HYF,REF)
ANL PB6 29F BONNIE Z1P
STAR BRIGHT FUTURE 533P ET (SDD)(DLE,HYF,REF)
STAR MISS AMERICA 12P (DLE,HYF,REF)

BMSI	304																		
BIIS	367	CE	BW	WW	YW	DMI	SC	SCF	MM	M&G	MCE	MCW	UDDR	TEAT	CW	FAT	REA	MARB	
CHBS	103	-3.8	3.4	57	87	0.4	1.1	13.7	25	54	1.0	103	1.30	1.20	72	-0.017	0.29	-0.03	

- A super feminine cow with a great udder. She is a granddaughter of Medonte's top breeding sire, Heat.
- Pasture exposed to Goble Conquest 317F from May 2 to August 20, 2020. Safe in calf.

**LOT
6A
COW**

GOBLE MISS D 316H

P44119178 – Calved: 3/22/20 – Tattoo: RE: BJG/LE: 316H

NJW 73S M326 TRUST 100W ET (SDD)(CHB)(DLE,HYF,REF,MSUDF)
RVP 100W DUKE 31D (DLE,HYF,REF,MSUDF)
P43769388 SRF AFFECTION 138A

KCF BENNETT 3008 M326 (SDD)(DLE,HYF,REF,MDF)
NJW P606 72N DAYDREAM 73S (DLE,HYF,REF,MSUDF)
MSU TCF REVOLUTION 4R (SDD)(CHB)(DLE,HYF,REF)
BYEVISTA 138 WARDEN 138Y

KANIMBLA FULL BOTTLE H117 (MDF)
HARVIE MS DUCHESS 104D
P44053192 MHPH RCY 101S DUCHESS 110Z

KIDMAN BLIGH D99
KANIMBLA MARITANA B06
BNMHPH 13P HEAT 101S (MDF)
MHPH MS 533P DUCHESS ET 1291W

BMSI	331																		
BIIS	400	CE	BW	WW	YW	DMI	SC	SCF	MM	M&G	MCE	MCW	UDDR	TEAT	CW	FAT	REA	MARB	
CHBS	120	-1.1	2.8	59	98	0.4	1.1	14.1	27	57	2.6	121	1.20	1.20	79	-0.017	0.55	0.04	

- She is moderate, complete and stout made. Should be an easy keeping, efficient brood cow.



Lot 7 – LFF Mallie Grace 1706



Lot 7A – Goble MS Mal 311H

LOT 7
COW

LFF MALLIE GRACE 1706

P43806475 – Calved: 3/1/17 – Tattoo: LE: 1706

GCC JPF LBB ENTICER A117 (OLE,HVF,IEF)
CLF GCC ENTICE C309 (OLE,HVF,IEF,MSUDF)
P43605073 GRASSY RUN RACHEL 1012

LAKE 002 KILOWATTS 104S (OLE,HVF,IEF)
JPF K01 MS EMBRACE U11
MSU TCF REVOLUTION 4R (SDD)(CHB)(OLE,HVF,IEF)
GRASSY 837S RACHEL G33

STAR BRITE EXPECTATIONS 33Y ET (OLE,HVF,IEF)
LFF MALLIE33Y 1412
P43522934 BOOT HILL MALINDA 1021

STAR BRIGHT FUTURE 533P ET (SDD)(OLE,HVF,IEF)
STAR MISS AMERICA 12P (OLE,HVF,IEF)
BHR RH MASTER 711
RED HILLS RHIANNA 61M S234

BMSI	238																	
BIIS	286	CE	BW	WW	YW	DMI	SC	SCF	MM	M&G	MCE	MCW	UDDR	TEAT	CW	FAT	REA	MARB
CHBS	99	-0.3	2.7	41	69	-0.4	0.7	9.4	19	40	0.3	74	1.10	1.20	56	0.003	0.25	0.02

- Halter broke. A red-eyed daughter of Entice who bred extremely well for Landrum's. His dam, Rachel 1012, was our favorite Revolution daughter.
- Pasture exposed to Goble Conquest 317F from May 2 to August 20, 2020. Safe in calf.

LOT 7A
COW

GOBLE MS MAL 311H

P44119195 – Calved: 3/12/20 – Tattoo: RE: BJG/LE: 311H

NJW 73S M326 TRUST 100W ET (SDD)(CHB)(OLE,HVF,IEF,MSUDF)
RVP 100W DUKE 31D (OLE,HVF,IEF,MSUDF)
P43769388 SRF AFFECTION 138A

KCF BENNETT 3008 M326 (SDD)(OLE,HVF,IEF,MDF)
NJW P606 72N DAYDREAM 73S (OLE,HVF,IEF,MSUDF)
MSU TCF REVOLUTION 4R (SDD)(CHB)(OLE,HVF,IEF)
BYEVISTA 138 WARDEN 138Y

CLF GCC ENTICE C309 (OLE,HVF,IEF,MSUDF)
LFF MALLIE GRACE 1706
P43806475 LFF MALLIE33Y 1412

GCC JPF LBB ENTICER A117 (OLE,HVF,IEF)
GRASSY RUN RACHEL 1012
STAR BRITE EXPECTATIONS 33Y ET (OLE,HVF,IEF)
BOOT HILL MALINDA 1021

BMSI	299																	
BIIS	361	CE	BW	WW	YW	DMI	SC	SCF	MM	M&G	MCE	MCW	UDDR	TEAT	CW	FAT	REA	MARB
CHBS	118	0.3	2.7	52	90	0.0	1.0	12.0	24	50	2.2	106	1.10	1.10	71	-0.007	0.53	0.07

- We can't say enough about the consistency of our Duke calves. He adds volume, balance and doing ability.



Lot 8 – MHPH 31D Dawn 227F



MHPH 106A Dawn 2041C – Dam of Lot 8

LOT 8
COW

MHPH 31D DAWN 227F

P44168247 – Calved: 2/27/18 – Tattoo: RE: MHPH227F

NJW 73S M326 TRUST 100W ET (SDD)(CHB)(OLE,HVF,IEF,MSUDF)
RVP 100W DUKE 31D (OLE,HVF,IEF,MSUDF)
P43769388 SRF AFFECTION 138A

KCF BENNETT 3008 M326 (SDD)(OLE,HVF,IEF,MDF)
NJW P606 72N DAYDREAM 73S (OLE,HVF,IEF,MSUDF)
MSU TCF REVOLUTION 4R (SDD)(CHB)(OLE,HVF,IEF)
BYEVISTA 138 WARDEN 138Y

MHPH 521X ACTION 106A (OLE,HVF,IEF,MSUDF)
MHPH 106A DAWNE 2041C
P43832112 ANL B 425X DAWNE 11A

TH 122 711 VICTOR 521X ET (CHB)(OLE,HVF,IEF)
MHPH 301W DAINTY 205Y
TH 89T 743 UNTAPPED 425X ET (OLE,HVF,IEF)
ANL B 7R DAWNE 120X

BMSI	383																	
BIIS	461	CE	BW	WW	YW	DMI	SC	SCF	MM	M&G	MCE	MCW	UDDR	TEAT	CW	FAT	REA	MARB
CHBS	119	5.3	2.6	66	111	0.4	1.2	17.7	29	62	4.1	118	1.20	1.30	73	-0.007	0.59	0.04

- The first producing Duke daughter we have sold. We appreciate her udder quality and maternal instinct. A 2-year-old that will be really impressive with maturity.
- Pasture exposed to Goble Conquest 317F from May 2 to August 20, 2020. Safe in calf.

LOT 8A
COW

GOBLE SUNSET 320H

P44168255 – Calved: 3/25/20 – Tattoo: RE: 320H/LE: BJG

GCC JPF LBB ENTICER A117 (OLE,HVF,IEF)
GOBLE MHPH LITTLE BASS 301C (OLE,HVF,IEF,MSUDF)
P43605065 MHPH 521X DAINTY 105A

LAKE 002 KILOWATTS 104S (OLE,HVF,IEF)
JPF K01 MS EMBRACE U11
TH 122 711 VICTOR 521X ET (CHB)(OLE,HVF,IEF)
MHPH MS 101S DAINTY 123U

RVP 100W DUKE 31D (OLE,HVF,IEF,MSUDF)
MHPH 31D DAWN 227F
P44168247 MHPH 106A DAWNE 2041C

NJW 73S M326 TRUST 100W ET (SDD)(CHB)(OLE,HVF,IEF,MSUDF)
SRF AFFECTION 138A
MHPH 521X ACTION 106A (OLE,HVF,IEF,MSUDF)
ANL B 425X DAWNE 11A

BMSI	342																	
BIIS	417	CE	BW	WW	YW	DMI	SC	SCF	MM	M&G	MCE	MCW	UDDR	TEAT	CW	FAT	REA	MARB
CHBS	111	3.8	2.7	66	102	0.5	1.0	15.5	25	58	2.6	112	1.25	1.25	74	-0.012	0.58	0.02

- A late March heifer that will just keep getting better and better.



Lot 9 – Elm-Lodge Free Spirit 16F

LOT 9 COW

ELM-LODGE FREE SPIRIT 16F

P44116635 – Calved: 1/24/18 – Tattoo: RE: TAX16F

R LEADER 6964 (CHB)(DLF,HVF,IEF,MSUDF)
P43500058 R MISS REVOLUTION 1009 (SDD)(DLF,HVF,IEF)

SCHU-LAR ON TARGET 22S (SDD)(DLF,HVF,IEF,MSUDF)
HYALITE S LASS 310 (DLF,HVF,IEF)
MSU TCF REVOLUTION 4R (SDD)(CHB)(DLF,HVF,IEF)
R MISS WRANGLER 3007

NJW 73S W18 HOMETOWN 10Y ET (SDD)(CHB)(DLF,HVF,IEF,MSUDF,MOD)
ELM-LODGE CHIC MELVA 27C
P44116625 ELM-LODGE 41D NECTARINE 57N

SHF WONDER M326 W18 ET (SDD)(CHB)(DLF,HVF,IEF,MSUDF)
NJW P606 72N DAYDREAM 73S (DLF,HVF,IEF,MSUDF)
ELM-LODGE JURASSIC 13J (SDD)
ELM-LODGE 13M MELVA 41D

BMSI	406																	
BIIS	484	CE	BW	WW	YW	DMI	SC	SCF	MM	M&G	MCE	MCW	UDDR	TEAT	CW	FAT	REA	MARB
CHBS	106	4.3	2.3	58	94	0.4	1.3	20.1	21	50	0.8	99	1.10	1.20	73	0.043	0.41	0.12

- Leader daughters are some of the most popular brood cows in the country. This one is red-eyed and productive like one would expect.
- Pasture exposed to Goble Conquest 317F from May 2 to August 20, 2020. Safe in calf.

LOT 9A COW

GOBLE LIL SPIRIT 319H

P44167813 – Calved: 3/25/20 – Tattoo: RE: 319H/LE: BJJ

CRR 719 CATAPULT 109 (SDD)(DLF,HVF,IEF,MOD)
ELM-LODGE ENGINEER 31E
P44105568 ELM-LODGE NECKLACE ET 31Y

TH 122 71I VICTOR 719T (SDD)(DLF,HVF,IEF,MSUDF,MOD)
CRR 4037 ECLIPSE 808 (DLF,HVF,IEF)
NJW 8E 120J EMBASSY 81S ET (SDD)(DLF,HVF,IEF)
ELM-LODGE NECKLACE ET 37N

R LEADER 6964 (CHB)(DLF,HVF,IEF,MSUDF)
ELM-LODGE FREE SPIRIT 16F
P44116635 ELM-LODGE CHIC MELVA 27C

HYALITE ON TARGET 936 (SDD)(DLF,HVF,IEF,MSUDC)
R MISS REVOLUTION 1009 (SDD)(DLF,HVF,IEF)
NJW 73S W18 HOMETOWN 10Y ET (SDD)(CHB)(DLF,HVF,IEF,MSUDF,MOD)
ELM-LODGE 41D NECTARINE 57N

BMSI	352																	
BIIS	427	CE	BW	WW	YW	DMI	SC	SCF	MM	M&G	MCE	MCW	UDDR	TEAT	CW	FAT	REA	MARB
CHBS	103	1.7	2.9	63	95	0.6	1.0	16.7	21	52	0.2	103	1.20	1.20	74	0.013	0.49	0.05

- One of the youngest heifers and one with a bit different pedigree.



Lot 10 – Goble Lady K 201E

LOT 10 COW

GOBLE LADY K 201E

P43828434 – Calved: 2/7/17 – Tattoo: RE: BJJ/LE: 201E

NS LAKES KILO 002
LAKE 002 KILOWATTS 104S (DLF,HVF,IEF)
P42698463 TNJ VICK NIKI 9104 9207C

JSF 37 271 DEVO 23C (SDD)
GK APOLLONIA 834Z
PW NICK 9104 (SDD)
TNJ DETERMINATE 156 17F

TH 122 71I VICTOR 719T (SDD)(DLF,HVF,IEF,MSUDF,MOD)
DPH 160 CALLIE
P43610542 DPH 74X ADDIE 160A

DRF JWR PRINCE VICTOR 71I (SDD)(DLF,HVF,IEF,MSUDF)
KBCR 19D DOMINETTE 122 (DLF,IEF)
DPH R117 EMERALD SKY 74X ET
DPH 10K RACE 37T

BMSI	329																	
BIIS	393	CE	BW	WW	YW	DMI	SC	SCF	MM	M&G	MCE	MCW	UDDR	TEAT	CW	FAT	REA	MARB
CHBS	95	-3.0	2.4	60	88	0.3	1.0	16.0	25	55	-12.1	85	1.30	1.30	64	-0.027	0.39	-0.07

- A productive Kilowatts daughter that has a nice udder, freckled faced and does her job well.
- Pasture exposed to Goble Conquest 317F from May 2 to August 20, 2020. Safe in calf.



RVP W18 Direction ET 119D – Sire of Lot 10A

LOT 10A COW

GOBLE MISS DIRECTION 310H

P44167767 – Calved: 3/12/20 – Tattoo: RE: BJJ/LE: 310H

SHF WONDER M326 W18 ET (SDD)(CHB)(DLF,HVF,IEF,MOD)
RVP W18 DIRECTION ET 119D
P44049447 STAR ROSE GARDON 13X ET (DLF,HVF,IEF)

KCF BENNETT 3008 M326 (SDD)(DLF,HVF,IEF,MOD)
SHF GOVERNESS 2366 L37 (DLF,HVF,IEF)
REMITALL ONLINE 122L (SDD)(CHB)(DLF,HVF,IEF)
GERBER 774 ROSY LANE 623S (DLF,HVF,IEF)

LAKE 002 KILOWATTS 104S (DLF,HVF,IEF)
GOBLE LADY K 201E
P43828434 DPH 160 CALLIE

NS LAKES KILO 002
TNJ VICK NIKI 9104 9207C
TH 122 71I VICTOR 719T (SDD)(DLF,HVF,IEF,MSUDF,MOD)
DPH 74X ADDIE 160A

BMSI	293																	
BIIS	364	CE	BW	WW	YW	DMI	SC	SCF	MM	M&G	MCE	MCW	UDDR	TEAT	CW	FAT	REA	MARB
CHBS	105	-1.2	2.9	59	91	0.2	1.2	12.5	24	54	-5.2	80	1.20	1.30	68	-0.007	0.42	0.08

- Her sire is a top breeding bull for River Valley in Canada and was senior champion at the Toronto Royal Winter show. She looks very much like her mother.



Lot 11 – TJL Lily Trust 1705



TJL LILY TRUST 1705

P43844024 – Calved: 2/25/17 – Tattoo: LE: 1705

KCF BENNETT 3008 M326 (S00)(DLE,HYF,IEF,MDF)
 NJW 73S M326 TRUST 100W ET (S00)(CMB)(DLE,HYF,IEF,MS0DF)
 P43002897 NJW P606 72N DAYDREAM 73S (DLE,HYF,IEF,MS0DF)

RRH MR FELT 3008 (S00)(CMB)(DLE,HYF,IEF)
 KCF MISS 459 F284
 PW VICTOR BOOMER P606 (S00)(DLE,HYF,IEF,MDF)
 NJW 94J DEW 72N (DLE,HYF,IEF)

BHR 2T BARB WIRE 924 ET
 924 MISS LILY 1216
 P43326903 BOOT HILL BELL 884

MSU TCF TITLEIST 2T ET (DLE,HYF,IEF)
 STAR OKALANI BARBIE 524P (DLE,HYF,IEF)
 MOHICAN ROUGHOUT 428R ET (DLE,HYF,IEF)
 BOOT HILL MISS BELLE 530

BMSI	336																	
BIIS	407	CE	BW	WW	YW	DMI	SC	SCF	MM	M&G	MCE	MCW	UDDR	TEAT	CW	FAT	REA	MARB
CHBS	130	2.1	3.4	61	104	0.3	1.2	13.5	30	61	8.0	123	1.20	1.10	79	-0.027	0.71	0.08

- A top shelf 3-year-old that breeds really well. Her dam is the top cow at Landrum Family Farm and is not for sale. We all know how we can count on the daughters of Trust to do their job.
- Pasture exposed to Goble Conquest 317F from May 2 to August 20, 2020. Safe in calf.



GOBLE MISS LIL 303H

P44165779 – Calved: 3/1/20 – Tattoo: RE: BIG/LE: 303H

MHPH 101S UMPIRE 118U
 RVP 118U FORTITUDE ET 7F (DLE,HYF,IEF,MS0DF)
 P44007413 RVP RCY 100W YE HAW 130Y

BNMHPH 13P HEAT 101S (MDF)
 MHPH MS 68M NITA 1112R
 NJW 73S M326 TRUST 100W ET (S00)(CMB)(DLE,HYF,IEF,MS0DF)
 RVP 36N TOUCH OF GOLD ET 10T

NJW 73S M326 TRUST 100W ET (S00)(CMB)(DLE,HYF,IEF,MS0DF)
 TJL LILY TRUST 1705
 P43844024 924 MISS LILY 1216

KCF BENNETT 3008 M326 (S00)(DLE,HYF,IEF,MDF)
 NJW P606 72N DAYDREAM 73S (DLE,HYF,IEF,MS0DF)
 BHR 2T BARB WIRE 924 ET
 BOOT HILL BELL 884

BMSI	367																	
BIIS	438	CE	BW	WW	YW	DMI	SC	SCF	MM	M&G	MCE	MCW	UDDR	TEAT	CW	FAT	REA	MARB
CHBS	116	1.4	3.3	59	99	0.4	1.4	16.7	26	56	4.6	118	1.30	1.30	75	-0.017	0.61	0.06

- One of the first Fortitude calves offered. His dam, Ye Haw, was reserve champion female at the Toronto Royal as a heifer calf. She is the lead donor in River Valley's program and never misses. This double bred Trust baby should breed really well.



RVP RCY 100W YE Haw 130Y – Dam of Fortitude



Lot 11A – Goble Miss Lil 303H



Goble Conquest 317F – Sire of Lots 12A, 13A and 15A

LOT 12 COW

LBB ELISA 20F

P43936460 – Calved: 1/25/18 – Tattoo: LE: 20F

PERKS 144U RIGHT TRACK 2040 (OLE,HVF,IEF) TH 75J 243R BAILOUT 144U ET (SOD)(CHR)(OLE,HVF,IEF)
 PERKS DCF 3056 PELL CITY 6054 (OLE,HVF,IEF,MSUDF) TH 23S 45P DUCHESS 123W (OLE,HVF,IEF)
 P43723173 PERKS DCF TRISHAS HOMETWN 3056 NJW 73S W18 HOMETOWN 10Y ET (SOD)(CHR)(OLE,HVF,IEF,MSUDF,MDC)
 JWR 369 TRISHA 181R (OLE,HVF,IEF)

GCC JPF LBB ENTICER A117 (OLE,HVF,IEF) LAKE 002 KILOWATTS 104S (OLE,HVF,IEF)
 LBB 4115 ELISA 21D JPF K01 MS EMBRACE U11
 P43712505 H MS BOOMER DOM 4115 PW VICTOR BOOMER P606 (SOD)(OLE,HVF,IEF,MDF)
 OXH CRISSIE 2284

BMS	334																	
BIIS	403	CE	BW	WW	YW	DMI	SC	SCF	MM	M&G	MCE	MCW	UDDR	TEAT	CW	FAT	REA	MARB
CHBS	108	0.1	2.8	55	87	0.2	0.9	14.9	27	54	1.2	100	1.20	1.20	71	0.003	0.45	0.10

• Pasture exposed to Goble Conquest 317F from May 2 to August 20, 2020. Safe in calf.

LOT 12A BULL

BJG CON 315H

P44119174 – Calved: 3/20/20 – Tattoo: RE: BJG/LE: 315H

RVP 100W DUKE 31D (OLE,HVF,IEF,MSUDF) NJW 73S M326 TRUST 100W ET (SOD)(CHR)(OLE,HVF,IEE,MSUDF)
 GOBLE CONQUEST 317F (OLE,HVF,IEF,MSUDF) SRF AFFECTION 138A
 P43938562 GOBLE MISS THING 237Y ET LAKE 002 KILOWATTS 104S (OLE,HVF,IEF)
 STAR MKS WESTERN PEACH 133R ET (OLE,HVF,IEF)

PERKS DCF 3056 PELL CITY 6054 (OLE,HVF,IEF,MSUDF) PERKS 144U RIGHT TRACK 2040 (OLE,HVF,IEF)
 LBB ELISA 20F PERKS DCF TRISHAS HOMETWN 3056
 P43936460 LBB 4115 ELISA 21D GCC JPF LBB ENTICER A117 (OLE,HVF,IEF)
 H MS BOOMER DOM 4115

BMS	319																	
BIIS	388	CE	BW	WW	YW	DMI	SC	SCF	MM	M&G	MCE	MCW	UDDR	TEAT	CW	FAT	REA	MARB
CHBS	111	-2.2	4.2	60	95	0.3	1.0	13.8	28	58	0.0	106	1.20	1.20	73	-0.007	0.51	0.05



Lot 13 – LBB LW 43Z Sophie 802 ET



UPS Sensation 2296 ET – Sire of Lots 1, 2 and 13

LOT 13 COW

LBB LW 43Z SOPHIE 802 ET

43936937 – Calved: 3/25/18 – Tattoo: LE: 802

CHURCHILL SENSATION 028X (SOD)(OLE,HVF,IEF,MDF) UPS DOMINO 3027 (SOD)(OLE,HVF,IEE,MSUDF)
 UPS SENSATION 2296 ET (OLE,HVF,IEF,MSUDF,MDF) CHURCHILL LADY 7202T ET (OLE,HVF,IEF)
 43321175 UPS JT MISS NEON 7811 1ET (OLE,HVF,IEF) GH NEON 17N (SOD)(CHR)(OLE,HVF,IEF,MSUDF)
 LCC TWO TIMIN 438 ET (OLE,HVF,IEF)

LW 995R WYOMING 917W ET BR DM CSF WALLACE ET (OLE,HVF,IEF)
 LBB WILLA 43Z (OLE,HVF,IEF) KJ J119 VIRGINIA 995R
 P43280692 LBB SUNSHINE 48X KJ C&L J119 VICTORY 258S ET (SOD)
 BROOKVIEW M48 SPARKLE 18S

BMS	296																	
BIIS	360	CE	BW	WW	YW	DMI	SC	SCF	MM	M&G	MCE	MCW	UDDR	TEAT	CW	FAT	REA	MARB
CHBS	104	8.0	2.9	56	86	0.2	0.7	12.8	30	57	7.4	82	1.20	1.30	66	0.003	0.54	0.03

• A very attractive daughter of the popular Sensation 2296. She was our pick as a heifer calf in the Lamb Brothers sale where she was a feature lot.
 • Pasture exposed to Goble Conquest 317F from May 2 to August 20, 2020. Safe in calf.

LOT 13A STEER

STEER

Calved: 3/18/20

- Sire: Goble Conquest 317F
- Only Ridgeview show steer prospect offered. He is young and the correct age for showing.



Lot 14 – CH MS Jordyn 603

LOT
14
COW

CH MS JORDYN 603 {DLF,HYF,IEF}

43683540 – Calved: 1/6/16 – Tattoo:

CRR ABOUT TIME 743 {S00}{DLF,HYF,IEF,MODF}
CH NAVIGATOR 320 ET {DLF,HYF,IEF}
43428501 TCC MISS HARLAND 93 ET {DLF,HYF,IEF}

THM DURANGO 4037 {S00}{DLF,HYF,IEF}
CRR 003 CASSIE 206 {DLF,HYF,IEF}
CJH HARLAND 408 {S00}{DLF,HYF,IEF,MSUDF}
LCC TWO TIMIN 438 ET {DLF,HYF,IEF}

CH OK ADVANCE SHADOW 0115 ET {DLF,HYF,IEF}
CHMS JULIE 2050
43363638 CH JR JUDY 0040 ET {DLF,HYF,IEF}

HH ADVANCE 4140P {S00}{CHB}{DLF,IEF}
HH MISS ADVANCE 4098P {DLF,HYF,IEF}
DM BR L1 DOMINO 146 {S00}{DLF,IEF}
CH MS REBA 7016 ET {DLF,IEF}

BMSI	268																	
BIIS	316	CE	BW	WW	YW	DMI	SC	SCF	MM	M&G	MCE	MCW	UDDR	TEAT	CW	FAT	REA	MARB
CHBS	111	1.2	2.8	59	96	0.5	1.2	11.2	35	65	2.7	90	1.40	1.50	75	-0.007	0.70	-0.23

- A solid Curry Herefords female that combines the best of Polled and Horn genetics. She is dark red and short marked.
- Pasture exposed to Goble Conquest 317F from May 2 to August 20, 2020. Safe in calf.

LOT
15
COW

DPH 170 SNOWFLAKE 394F ET

P43939167 – Calved: 1/21/18 – Tattoo: LE: 394F

CHURCHILL RED BULL 200Z {S00}{CHB}{DLF,HYF,IEF,MSUDF,MODF}
CHURCHILL KICKSTART 501C ET {DLF,HYF,IEF,MSUDF,MODF}
P43603037 HVH OKSANA 4L 33N {DLF,HYF,IEF}

CHURCHILL SENSATION 028X {S00}{DLF,HYF,IEF,MODF}
CHURCHILL LADY 002X ET {DLF,HYF,IEF,MSUDF}
HVH KREMLIN 57F 108K
HVH GENETIC QUEEN 53H 4L {DLF,HYF,IEF}

KAIRURU ABERDEEN 03 0047
HARVIE MS FIREFLY 170S {DLF,HYF,IEF,MSUDF}
P43115086 HARVIE MISS FIREFLY 51F

LELANDS TRANSITION T7
KAIRURU PLUM T44
HARVIE DEYNOTE 61D
HARVIE MISS NYLON 1Y

BMSI	363																	
BIIS	409	CE	BW	WW	YW	DMI	SC	SCF	MM	M&G	MCE	MCW	UDDR	TEAT	CW	FAT	REA	MARB
CHBS	90	4.2	1.9	53	91	0.0	0.8	19.5	14	40	4.8	101	1.40	1.40	54	0.023	0.37	-0.28

- Our only daughter of the popular Kickstart. Her dam is from the famed Harvie Ranching Firefly donor family.
- Pasture exposed to Goble Conquest 317F from May 2 to August 20, 2020. Safe in calf.

LOT
14A
COW

GOBLE MISS JORDI 306H

P44167769 – Calved: 3/8/20 – Tattoo: RE: BJG/LE: 306H

KJ HVH 33N REDEEM 485T ET {S00}{DLF,HYF,IEF}
H BK CCC SR GAME CHANGER ET {CHB}{DLF,HYF,IEF,MSUDF}
P43296077 NJW 78P 63N LADYSPORT 51W ET {DLF,HYF,IEF}

SHF RADAR M326 R125 {S00}{DLF,HYF,IEF}
HVH OKSANA 4L 33N {DLF,HYF,IEF}
TH JWR SOP 166 576 TUNDRA 63N {S00}{DLF,HYF,IEF}
NIW BW LADYSPORT DEW 78P ET {DLF,HYF,IEF}

CH NAVIGATOR 320 ET {DLF,HYF,IEF}
CH MS JORDYN 603 {DLF,HYF,IEF}
43683540 CHMS JULIE 2050

CRR ABOUT TIME 743 {S00}{DLF,HYF,IEF,MODF}
TCC MISS HARLAND 93 ET {DLF,HYF,IEF}
CH OK ADVANCE SHADOW 0115 ET {DLF,HYF,IEF}
CH JR JUDY 0040 ET {DLF,HYF,IEF}

BMSI	314																	
BIIS	364	CE	BW	WW	YW	DMI	SC	SCF	MM	M&G	MCE	MCW	UDDR	TEAT	CW	FAT	REA	MARB
CHBS	118	0.9	3.4	57	92	0.1	0.9	13.5	31	60	4.2	108	1.30	1.40	75	-0.007	0.71	-0.19

- A daughter of the popular Game Changer. Study the numbers on this young lady as she is well above breed average in all traits.

LOT
15A
COW

GOBLE SNOWBALL 305H

P44169377 – Calved: 3/2/20 – Tattoo: RE: 305H/LE: BJG

RVP 100W DUKE 31D {DLF,HYF,IEF,MSUDF}
GOBLE CONQUEST 317F {DLF,HYF,IEF,MSUDF}
P43938562 GOBLE MISSTHING 237Y ET

NJW 73S M326 TRUST 100W ET {S00}{CHB}{DLF,HYF,IEF,MSUDF,MODF}
SRF AFFECTION 138A
LAKE 002 KILOWATTS 104S {DLF,HYF,IEF}
STAR MKS WESTERN PEACH 133R ET {DLF,HYF,IEF}

CHURCHILL KICKSTART 501C ET {DLF,HYF,IEF,MSUDF,MODF}
DPH 170 SNOWFLAKE 394F ET
P43939167 HARVIE MS FIREFLY 170S {DLF,HYF,IEF,MSUDF}

CHURCHILL RED BULL 200Z {S00}{CHB}{DLF,HYF,IEF,MSUDF,MODF}
HVH OKSANA 4L 33N {DLF,HYF,IEF}
KAIRURU ABERDEEN 03 0047
HARVIE MISS FIREFLY 51F

BMSI	339																	
BIIS	397	CE	BW	WW	YW	DMI	SC	SCF	MM	M&G	MCE	MCW	UDDR	TEAT	CW	FAT	REA	MARB
CHBS	103	1.6	2.8	56	93	0.2	0.9	16.1	22	50	2.7	106	1.30	1.30	64	0.003	0.56	-0.10

- Only a few Conquest calves but we are excited about his future.



Goble Conquest 317F



GOBLE CONQUEST 317F {DLF,HYF,IEF,MSUDF}

P43938562 – Calved: 3/18/18 – Tattoo: RE: BJG/LE: 317F

NW 73S M326 TRUST 100W ET {SDD}{CHB}{DLF,HYF,IEF,MSUDF}
 RVP 100W DUKE 31D {DLF,HYF,IEF,MSUDF}
 P43769388 SRF AFFECTION 138A

KCF BENNETT 3008 M326 {SDD}{DLF,HYF,IEF,MSUDF}
 NJW P606 72N DAYDREAM 73S {DLF,HYF,IEF,MSUDF}
 MSU TCF REVOLUTION 4R {SDD}{CHB}{DLF,HYF,IEF}
 BYEVISTA 138 WARDEN 138Y

LAKE 002 KILOWATTS 104S {DLF,HYF,IEF}
 GOBLE MISS THING 237Y ET
 P43203028 STAR MKS WESTERN PEACH 133R ET {DLF,HYF,IEF}

NS LAKES KILO 002
 TNJ VICK NIKI 9104 9207C
 REMITALL ONLINE 122L {SDD}{CHB}{DLF,HYF,IEF}
 STAR MKS STARLENA SS 165M

BMSI	314																	
BIIS	384	CE	BW	WW	YW	DMI	SC	SCF	MM	M&G	MCE	MCW	UDDR	TEAT	CW	FAT	REA	MARB
CHBS	116	-1.1	3.7	60	95	0.3	1.0	12.7	30	59	0.6	111	1.20	1.20	73	-0.017	0.74	0.09



Lot 16 – Goble Tinley 304G



GOBLE TINLEY 304G

P44053906 – Calved: 3/9/19 – Tattoo: RE: 304G/LE: BJG

LAKE 002 KILOWATTS 104S {DLF,HYF,IEF}
 GCC JPF LBB ENTICER A117 {DLF,HYF,IEF}
 P43357507 JPF K01 MS EMBRACE U11

NS LAKES KILO 002
 TNJ VICK NIKI 9104 9207C
 STAR TRF 8006 EMBRACER 229 ET
 JPF 315 DREAM K01

MHPH 521X ACTION 106A {DLF,HYF,IEF,MSUDF}
 AXA 106A TINA 103C
 P44053895 AXA 69T TINA 113Y

TH 122 71I VICTOR 521X ET {CHB}{DLF,HYF,IEF}
 MHPH 301W DAINTY 205Y
 HARVIE TRAVELER 69T {MDF}
 AXA 4L TINA 201T

BMSI	302																	
BIIS	368	CE	BW	WW	YW	DMI	SC	SCF	MM	M&G	MCE	MCW	UDDR	TEAT	CW	FAT	REA	MARB
CHBS	98	-1.8	4.3	63	94	0.6	0.8	14.0	16	48	0.8	97	1.20	1.10	69	-0.027	0.46	-0.05

- These Enticer daughters make sweet momma cows. Being out of a daughter of Action 106A only adds to her predictability.
- Pasture exposed to Goble Conquest 317H from May 2 to August 20, 2020. Safe in calf.



Lot 17 – LBB Pamela 15G



LBB PAMELA 15G

P44039021 – Calved: 1/10/19 – Tattoo: LE: 15G

PERKS 144U RIGHT TRACK 2040 {DLF,HYF,IEF}
 PERKS DCF 3056 PELL CITY 6054 {DLF,HYF,IEF,MSUDF}
 P43723173 PERKS DCF TRISHAS HOMETWN 3056

TH 75I 243R BAILOUT 144U ET {SDD}{CHB}{DLF,HYF,IEF}
 TH 23S 45P DUCHESS 123W {DLF,HYF,IEF}
 NJW 73S W18 HOMETOWN 10Y ET {SDD}{CHB}{DLF,HYF,IEF,MSUDF,MSD}
 JWR 369 TRISHA 181R {DLF,HYF,IEF}

GCC JPF LBB ENTICER A117 {DLF,HYF,IEF}
 LW 189Y ELANA 118D
 P43707088 STAR CALILOPE TYME 189Y {DOB}

LAKE 002 KILOWATTS 104S {DLF,HYF,IEF}
 JPF K01 MS EMBRACE U11
 SPEARHEAD MAGNUM P28 {DLF,HYF,IEF}
 CLF GCC PENELOPE W343 {DOB}

BMSI	290																	
BIIS	360	CE	BW	WW	YW	DMI	SC	SCF	MM	M&G	MCE	MCW	UDDR	TEAT	CW	FAT	REA	MARB
CHBS	108	-3.9	3.9	57	91	0.1	0.9	11.9	25	53	-2.1	98	1.30	1.30	68	0.003	0.36	0.10

- This Lamb bred female is dark red, stout built and has the look of a beef cow.
- Pasture exposed to Goble Conquest 317H from May 2 to August 20, 2020. Safe in calf.



Lot 18 – LBB Madison 138F

LOT 18 COW

LBB MADISON 138F

P43932852 – Calved: 5/8/18 – Tattoo: LE: 138F

HH ADVANCE 4075B ET (CHB) (DLF,HVE,REF,MSUDF,MDF)
 H FHF ADVANCE 624 ET (DLF,HVE,REF,MSUDF)
 P43725904 FHF 408 RITA 21W (DLF,HVE,REF,MSUDF)

HH ADVANCE 1013Y ET (DLF,HVE,REF)
 HH MISS ADVANCE 0121X (DLF,HVE,REF)
 CJH HARLAND 408 (SOD) (DLF,HVE,REF,MSUDF)
 FHF 45P RITA 10T

CHAC MASON 2214 (CHB) (DLF,HVE,REF)
 GOBLE JPF MADISON C209
 P43614667 JPF K01 MS EMBRACE U11

CRR ABOUT TIME 743 (SOD) (DLF,HVE,REF,MDF)
 GKB 31 GRACE 7100 (DLF,HVE,REF)
 STAR TRF 8006 EMBRACER 229 ET
 JPF 315 DREAM K01

BMSI	297																	
BIIS	358	CE	BW	WW	YW	DMI	SC	SCF	MM	M&G	MCE	MCW	UDDR	TEAT	CW	FAT	REA	MARB
CHBS	116	0.9	3.2	51	83	0.2	0.4	12.0	16	42	3.4	105	1.20	1.10	78	0.013	0.59	0.07

- An older bred heifer and a powerful one. She has the quality and look we all desire in a brood cow.
- Pasture exposed to Goble Conquest 317H from May 2 to August 20, 2020. Safe in calf.

LOT 19 COW

GOBLE ROLLINS LIV 602G

P44046248 – Calved: 6/1/19 – Tattoo: RE: 602G/LE: BJG

GCC JPF LBB ENTICER A117 (DLF,HVE,REF)
 GOBLE MHPH LITTLE BASS 301C (DLF,HVE,REF,MSUDF)
 P43605065 MHPH 521X DAINTY 105A

LAKE 002 KILOWATTS 104S (DLF,HVE,REF)
 JPF K01 MS EMBRACE U11
 TH 122 711 VICTOR 521X ET (CHB) (DLF,HVE,REF)
 MHPH MS 101S DAINTY 123U

NS LAKES KILO 002
 GOBLE 002 LIVVI 203X ET
 P43078810 TNJ VICK NIKI 9104 9207C

JSF 37 271 DEVO 23C (SOD)
 GK APOLLONIA 834Z
 PW NICK 9104 (SOD)
 TNJ DETERMINATE 156 17F

BMSI	274																	
BIIS	333	CE	BW	WW	YW	DMI	SC	SCF	MM	M&G	MCE	MCW	UDDR	TEAT	CW	FAT	REA	MARB
CHBS	96	-0.2	2.8	58	86	0.3	0.8	12.2	22	51	-1.1	95	1.30	1.30	66	-0.017	0.36	-0.07

- A top bred yearling out of Kilowatts full sister. Her paternal grandmother, Dainty 105A, was champion heifer at the Toronto Royal Winter show. This lady should make a special cow.
- Pasture exposed to Goble Conquest 317H from May 2 to August 20, 2020. Safe in calf.



Lot 19 – Goble Rollins Liv 602G



Goble 002 Livvi 203X ET – Dam of Lot 19



Lot 20A – Goble Evolution II 101H

LOT 20 COW

GF 106A REESE 204E

44165900 – Calved: 2/4/17 – Tattoo: RE: CF204E

TH 122 71H VICTOR 521X ET (CHB)(OLE,HVE,REF)
 MHPH 521X ACTION 106A (OLE,HVE,REF,MSUDF)
 P43439334 MHPH 301W DAINTY 205Y

DRF JWR PRINCE VICTOR 711 (SDD)(OLE,HVE,REF,MSUDF)
 KBCR 19D DOMINETTE 122 (OLE,REF)
 MHPH 102S WYATT 301W
 MHPH MS 101S DAINTY 123U

BNMHPH 13P HEAT 101S (MDF)
 XLP 101S REESE 500B
 P44165898 XLP 45T REESE II 500W

REMITALL PATRIOT ET 13P (SDD)(OLE,HVE,REF)
 ANL PBG 29F BONNIE 21P
 STAR 26P FREEDOM 45T ET
 HAROLDSON'S JVJ REESE 19D 5S

BMSIS	332																	
BIIS	399	CE	BW	WW	YW	DMI	SC	SCF	MM	M&G	MCE	MCW	UDDR	TEAT	CW	FAT	REA	MARB
CHBS	101	-4.5	4.5	63	98	0.5	1.0	15.5	28	60	-0.9	113	1.30	1.20	68	-0.017	0.55	-0.06

- This top producing daughter of the popular Action 106A was our selection in Medonte's sale. Her bull calf speaks volumes about her production ability.
- Bred AI April 25, 2020 to Lake 002 Kilowatts 104S, then pasture exposed to Goble Conquest 317F from May 2 to August 20, 2020. Safe in calf.

LOT 20A BULL

GOBLE EVOLUTION II 101H

P44168292 – Calved: 1/20/20 – Tattoo: RE: 101H/LE: BJK

CHURCHILL STUD 3134A (CHB)(OLE,HVE,REF)
 MHPH 3134 EVOLUTION 117E
 P44168248 MHPH 10Y NITA 226B

KJ HVH 33N REDEEM 485T ET (SDD)(OLE,HVE,REF)
 CHURCHILL LADY 002X ET (OLE,HVE,REF,MSUDF)
 NJW 73S W18 HOMETOWN 10Y ET (SDD)(CHB)(OLE,HVE,REF,MSUDF,MOD)
 MHPH MS 68M NITA 1112R

MHPH 521X ACTION 106A (OLE,HVE,REF,MSUDF)
 GF 106A REESE 204E
 44165900 XLP 101S REESE 500B

TH 122 71H VICTOR 521X ET (CHB)(OLE,HVE,REF)
 MHPH 301W DAINTY 205Y
 BNMHPH 13P HEAT 101S (MDF)
 XLP 45T REESE II 500W

BMSIS	366																	
BIIS	433	CE	BW	WW	YW	DMI	SC	SCF	MM	M&G	MCE	MCW	UDDR	TEAT	CW	FAT	REA	MARB
CHBS	112	-2.7	4.1	60	97	0.4	1.0	17.3	29	59	-0.5	108	1.30	1.25	76	0.008	0.57	-0.05

- He is massive, stout, complete and has a total outcross pedigree to most cattle in our area.



Lot 20 – GF 106A Reese 204E



MHPH 521X Action 106A – Sire of Lot 20



Lot 21A – BJG Connor 102H

LOT 21 COW

WLL FEELIN HOT 13F

P44114533 – Calved: 1/14/18 – Tattoo: RE: WLL 13F

VCR 993W ULTIMATE 236Z (OLE,HYF,JEF)
 JDH 4X ULTIMATE 236Z 94B (OLE,HYF,JEF,MDF)
 P43468994 JDH AH VIOLETS RECRUIT 4X ET (OLE,HYF,JEF)

KJ 426T VINCENT 993W (OLE,HYF,JEF)
 VCR 310N MISS DESIRE 609S (DOB)
 KJ 2403 RECRUIT 966R (DOB,OLE,HYF,JEF)
 CRR D03 VIOLET 349 (OLE,HYF,JEF)

AXA GOLDEN-OAK XCEED ET 704X (OLE,HYF,JEF,MSDUC,MDF)
 WLL CANDY CRUSH 27C
 P44114531 CORP CREEK STACIE 6S

SHF RIB EYE M326 R117 (DOB,OLE,HYF,JEF)
 NCX MISS JR NELLIE 528N (OLE,HYF,JEF,MSDUC)
 FORC 29F BOOMER 18L (CHR)
 CORP CREEK LACIE 1L

BMS	299																	
BIIS	359	CE	BW	WW	YW	DMI	SC	SCF	MM	M&G	MCE	MCW	UDDR	TEAT	CW	FAT	REA	MARB
CHBS	109	-0.5	5.3	56	90	0.0	1.2	12.9	26	54	-2.1	101	1.40	1.30	67	-0.007	0.38	-0.04

- Another top producer from Whiskey Lane Livestock in Ontario. This 2-year-old is raising as many pounds as any selling. She has a nice udder and is maintaining herself while doing a whale of a job.
- Pasture exposed to Goble Conquest 317F from May 2 to August 20, 2020. Safe in calf.

LOT 21A BULL

BJG CONNORIO2H

P44119205 – Calved: 1/30/20 – Tattoo: RE: BJG/LE: 102H

UPH PROSPECTOR P152 (DOB,OLE,HYF,JEF)
 WHITEHAWK WARRIOR 845C ET (OLE,HYF,JEF,MSDUC,MDF)
 P43566921 GRANDVIEW CMR 4003 BETH Y115ET (OLE,HYF,JEF)

HUTH PROSPECTOR K085 (DOB,OLE,HYF,JEF)
 UPH MANDY M863
 GRANDVIEW VIC H132 236 4003 ET (OLE,HYF,JEF)
 DJB 46B BETH 1L (OLE,HYF,JEF,MSDUC)

JDH 4X ULTIMATE 236Z 94B (OLE,HYF,JEF,MDF)
 WLL FEELIN HOT 13F
 P44114533 WLL CANDY CRUSH 27C

VCR 993W ULTIMATE 236Z (OLE,HYF,JEF)
 JDH AH VIOLETS RECRUIT 4X ET (OLE,HYF,JEF)
 AXA GOLDEN-OAK XCEED ET 704X (OLE,HYF,JEF,MSDUC,MDF)
 CORP CREEK STACIE 6S

BMS	369																	
BIIS	449	CE	BW	WW	YW	DMI	SC	SCF	MM	M&G	MCE	MCW	UDDR	TEAT	CW	FAT	REA	MARB
CHBS	111	0.4	3.9	62	97	0.4	1.3	16.7	30	61	-0.3	111	1.30	1.30	74	0.003	0.57	0.15

- Herd bull all the way! This is a super stout, eye appealing son of the great breeding WhiteHawk Warrior. Another calf with outcross genetics that can build a cow herd.



Lot 21 – WLL Feelin Hot 13F



Whitehawk Warrior 845C ET – Sire of Lot 21A



LANDRUM FAMILY FARMS

1412 W. 900 S. • Warren, IN 46792
 Thatcher 260-917-0177
 Joe 260-466-8149
 Jane 260-917-0036
 jlandrum@citznet.com



Lot 22 – LFF 1604 100W Trust Cybil 1910

**LOT
22
COW**

LFF 1604 100W TRUST CYBIL 1910

P44012070 – Calved: 1/23/19 – Tattoo: LE: 1910

KCF BENNETT 3008 M326 (SOD)(OLE,HVF,REF,INDF)
 NIW 73S M326 TRUST 100W ET (SOD)(CHR)(OLE,HVF,REF,MSUDF)
 P43002897 NIW P606 72N DAYDREAM 73S (OLE,HVF,REF,MSUDF)

RRH MR FELT 3008 (SOD)(CHR)(OLE,HVF,REF)
 KCF MISS 459 F284
 PW VICTOR BOOMER P606 (SOD)(OLE,HVF,REF,INDF)
 NIW 94J DEW 72N (OLE,HVF,REF)

GOBLE CATEGORY 5 322Z (OLE,HVF,REF)
 LFF HURRICANE CYBIL 2 1604
 P43673307 TIL BARBIE 1419

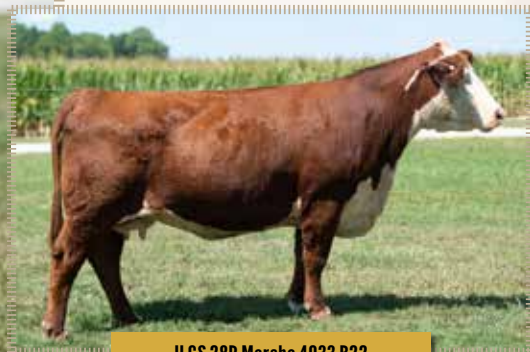
CS BOOMER 29F (SOD)(OLE,HVF,REF)
 STAR MKS WESTERN PEACH 133R ET (OLE,HVF,REF)
 GOBLE HOMEGROWN 213X
 BOOT HILL STAR BARBIE 601

BMS	332																	
BIIS	401	CE	BW	WW	YW	DMI	SC	SCF	MM	M&G	MCE	MCW	UDDR	TEAT	CW	FAT	REA	MARB
CHBS	128	3.6	2.4	57	97	0.1	1.2	13.3	31	60	4.5	115	1.20	1.20	77	-0.027	0.66	0.10

- A powerful brood cow prospect that is destined to be a herd builder. Trust females are among the breed's very best and the "Peach" and "Barbie" cow families were leading donors at Star Lake. Champion County bred Hereford at the 2020 Huntington County 4-H Fair.
- Observed bred May 17, 2020 to MF 3Z Gilead 743 2G ET (P44052898).



**MF 3Z Gilead 743 2G ET – Service Sire for Lot 22
 Owned by H-Town Cattle Co.**



JLCS 28P Marsha 4033 B22

Lot 23 – LFF Mr Print 2009

LOT 23 BULL

LFF MR PRINT 2009

P44122661 – Calved: 1/23/20 – Tattoo: LE: 2009

R LEADER 6964 (CHB)(DLF,HYF,REF,MSUDF)
 BOYD 31Z BLUEPRINT 6153 (DLF,HYF,REF,MSUDF,MDF)
 P43764491 NJW 91H 100W RITA 31Z ET (DLF,HYF,REF)

HYALITE ON TARGET 936 (SDD)(DLF,HYF,REF,MSUDC)
 R MISS REVOLUTION 1009 (DOD)(DLF,HYF,REF)
 NJW 73S M326 TRUST 100W ET (SDD)(CHB)(DLF,HYF,REF,MSUDF)
 REMITALL RITA 91H (DLF,HYF,REF)

NJW 120J BOULDER 28P ET (DLF,HYF,REF)
 JLCS 28P MARSHA 4033 B22
 P43493242 JJD MARSHA 4033 (DLF,HYF,REF,MSUDF)

RU 20X BOULDER 576 (SDD)
 SADDLE VLY LADYSPORT 120
 SHF MARSHAL 2366 M33 (SDD)
 JJD SOUTHERN LADY 629

BMSI	334																	
BIIS	398	CE	BW	WW	YW	DMI	SC	SCF	MM	M&G	MCE	MCW	UDDR	TEAT	CW	FAT	REA	MARB
CHBS	109	8.5	2.7	53	86	0.0	1.3	15.3	24	50	6.9	76	1.40	1.50	68	0.033	0.39	0.04

- A super stout son of the \$105,000 Genex Sire, Blueprint 6153.
- This guy has style, performance and quality in a neat looking package.
- His dam is a superior producer from Jeff and Lou Ellen Harr at J&L Cattle in Ohio.

LOT 24 BULL

LFF GRASSY PRINT 2005

P44122664 – Calved: 1/23/20 – Tattoo: LE: 2005

R LEADER 6964 (CHB)(DLF,HYF,REF,MSUDF)
 BOYD 31Z BLUEPRINT 6153 (DLF,HYF,REF,MSUDF,MDF)
 P43764491 NJW 91H 100W RITA 31Z ET (DLF,HYF,REF)

HYALITE ON TARGET 936 (SDD)(DLF,HYF,REF,MSUDC)
 R MISS REVOLUTION 1009 (DOD)(DLF,HYF,REF)
 NJW 73S M326 TRUST 100W ET (SDD)(CHB)(DLF,HYF,REF,MSUDF)
 REMITALL RITA 91H (DLF,HYF,REF)

NJW 73S M326 TRUST 100W ET (SDD)(CHB)(DLF,HYF,REF,MSUDF)
 GRASSY RUN CHARITY 4023
 P43523279 GMF MS GINNY Y121

KCF BENNETT 3008 M326 (SDD)(DLF,HYF,REF,MDF)
 NJW P606 72N DAYDREAM 73S (DLF,HYF,REF,MSUDF)
 STAR BSP ROXS GUNNER 22T ET (DLF,HYF,REF)
 H MISS 8E CHARITY 8066

BMSI	392																	
BIIS	466	CE	BW	WW	YW	DMI	SC	SCF	MM	M&G	MCE	MCW	UDDR	TEAT	CW	FAT	REA	MARB
CHBS	120	11.4	0.9	53	90	0.2	1.4	18.0	29	56	7.6	102	1.30	1.30	72	-0.007	0.51	0.18

- If you need a bull for breeding heifers, here he is! He has balanced numbers, a very productive dam from the strong Grassy Run cowherd and of course the popular "Blueprint" for a sire.



Boyd 31Z Blueprint 6153

Lot 24 – LFF Grassy Print 2005



Lot 25 – LFF 4R C30 Miss Lindsey 1911

LOT 25 COW

LFF 4R C30 MISS LINDSEY 1911

P44010235 – Calved: 1/30/19 – Tattoo: LE: 1911

FELTONS LEGEND 242 (SDD)(HYF)
 MSU TCF REVOLUTION 4R (SDD)(CHB)(OLF,HYF,REF)
 P42593689 MSU TCF RACHAEL ET 54N (OLF,HYF,REF)

FELTONS DOMINO 774 (SDD)(OLF,HYF,REF)
 FELTONS G15
 REMITALL ONLINE 122L (SDD)(CHB)(OLF,HYF,REF)
 HH MISS ADV 7866 1ET

NJW 73S M326 TRUST 100W ET (SDD)(CHB)(OLF,HYF,REF,MSDDF)
 ROPF TRUST IN LINDSEY C30 ET
 P43625090 FPH MS MOHICAN MINT 19M T168 (OLF,HYF,REF)

KCF BENNETT 3008 M326 (SDD)(OLF,HYF,REF,MOF)
 NJW P606 72N DAYDREAM 73S (OLF,HYF,REF,MSDDF)
 MOHICAN MINT 19M (OLF,HYF,REF)
 FPH MISS VICKI P606 R49

BMSI	353																	
BIIS	434	CE	BW	WW	YW	DMI	SC	SCF	MM	M&G	MCE	MCW	UDDR	TEAT	CW	FAT	REA	MARB
CHBS	114	1.1	3.5	63	102	0.5	1.3	15.3	26	58	3.7	120	1.30	1.30	78	0.023	0.76	0.17

- A super feminine daughter of the popular “cowmaker”, MSU TCF Revolution 4R. This one already looks like the front pasture kind.
- Pasture exposed to LFF 6101 6964 Cash 1908 from May 1 to June 15, 2020. Safe in calf.



Lot 26 – LFF Bay 1528 C309

LOT 26 COW

LFF BAY 1528 C309

P43925791 – Calved: 4/16/18 – Tattoo: LE: 1830

GCC JPF LBB ENTICER A117 (OLF,HYF,REF)
 CLF GCC ENTICE C309 (OLF,HYF,REF,MSDDF)
 P43605073 GRASSY RUN RACHEL 1012

LAKE 002 KILOWATTS 104S (OLF,HYF,REF)
 JPF K01 MS EMBRACE 011
 MSU TCF REVOLUTION 4R (SDD)(CHB)(OLF,HYF,REF)
 GRASSY 837S RACHEL 633

GOBLE HOMEGROWN 213X
 LFF BARBIE 1528
 P43651347 BOOT HILL STAR BARBIE 601

RVP STAR 533P CAN-AM ET 57U (OLF,HYF,REF)
 SRM MISS LILLIE 736 (OLF,HYF,REF)
 HB STAR BATTLE GROUND 2013 (OLF,HYF,REF)
 STAR OKALANI BARBIE 524P (OLF,HYF,REF)

BMSI	250																	
BIIS	308	CE	BW	WW	YW	DMI	SC	SCF	MM	M&G	MCE	MCW	UDDR	TEAT	CW	FAT	REA	MARB
CHBS	104	-2.1	3.8	52	82	0.0	0.8	9.8	20	46	-0.2	85	1.20	1.20	65	-0.007	0.43	0.02

- A younger, growthy yearling from the same “Barbie” cow family as our lead yearling Lot 22. Both Entice and Homegrown breed really well in our herd.
- Pasture exposed to LFF 6101 6964 Cash 1908 from May 1 to June 15, 2020. Safe in calf.



LFF 6101 6964 Cash 1908

LOT Ref SIRE

LFF 6101 6964 CASH 1908

P44010312 – Calved: 1/25/19 – Tattoo: LE: 1908

HYALITE ON TARGET 936 (SDD)(OLF,HYF,REF,MSDDF)
 R LEADER 6964 (CHB)(OLF,HYF,REF,MSDDF)
 P43500058 R MISS REVOLUTION 1009 (SDD)(OLF,HYF,REF)

SCHU-LAR ON TARGET 22S (SDD)(OLF,HYF,REF,MSDDF)
 HYALITE S LASS 310 (OLF,HYF,REF)
 MSU TCF REVOLUTION 4R (SDD)(CHB)(OLF,HYF,REF)
 R MISS WRANGLER 3007

BOYD MASTERPIECE 0220 (SDD)(OLF,HYF,REF,MSDDF,MOF)
 BOYD 108X DOREEN 6101
 P43682482 NJW 8S 4037 DOREEN 108X (OLF,HYF,REF)

SHF RIB EYE M326 R117 (SDD)(OLF,HYF,REF)
 SSF P606 MS VICTOR 803 (OLF,HYF,REF)
 THM DURANGO 4037 (SDD)(OLF,HYF,REF)
 NJW 9126J K014 DOREEN 8S ET (OLF,HYF,REF)

BMSI	404																	
BIIS	486	CE	BW	WW	YW	DMI	SC	SCF	MM	M&G	MCE	MCW	UDDR	TEAT	CW	FAT	REA	MARB
CHBS	108	-0.9	3.6	64	101	0.5	1.2	19.8	27	59	0.1	100	1.20	1.30	77	0.043	0.45	0.09

- We are excited about this young sire and expect great things from his calves.
- He is super sound, balanced and very strong maternally. His dam was our selection in an earlier “Breeders Cup” sale at Boyd Beef in Kentucky. Her dam, NJW 108X, was a donor in that program.



Lot 27 – Journey’s Sweet Stevie

LOT 27 COW

JOURNEY’S SWEET STEVIE

P44168454 – Calved: 1/9/20 – Tattoo: LE: TH120

LJR 023R WHITMORE 10W (S00)(CHB)(OLE,HVE,REF,MSDUF,MDF)
 NIW 84B 10W JOURNEY 53D (OLE,HVE,REF,MSDUF)
 P43721750 NIW 16S 100W JOEY 84B ET (OLE,HVE,REF,MSDUF)

KJ C&L J119 LOGIC 023R ET (S00)(OLE,HVE,REF)
 LJR MICKEY 278N (M00)(OLE,REF)
 NIW 73S M326 TRUST 100W ET (S00)(CHB)(OLE,HVE,REF,MSDUF)
 TLELL 117F JOEY 16S (OLE,HVE,REF)

NIW 135U 10Y HOMETOWN 27A (OLE,HVE,REF,MSDUF,MDC)
 SSF 4032 MSS 27A 381
 P44006577 RHF 220 BELL STAR 4032B (OLE,HVE,REF)

NIW 73S W18 HOMETOWN 10Y ET (S00)(CHB)(OLE,HVE,REF,MSDUF,MDC)
 NIW 4037 34S DURANGO VACA 135U (M00)(OLE,HVE,REF,MSDUF)
 BOYD MASTERPIECE 0220 (S00)(OLE,HVE,REF,MSDUF,MDF)
 GRANDVIEW CMR PLATO MS 424 Y217 (OLE,HVE,REF)

BMS	395																	
BIIS	477	CE	BW	WW	YW	DMI	SC	SCF	MM	M&G	MCE	MCW	UDDR	TEAT	CW	FAT	REA	MARB
CHBS	102	4.4	1.6	66	99	0.8	1.1	19.8	22	55	2.1	97	1.25	1.25	78	0.038	0.56	0.08

- You will love the volume, thickness and balance of this super neat cow prospect.
- The Journey 53D cattle are popular commodities.
- Co-owned with H-Town Cattle Co.

LOT 28 COW

SPIRIT’S TIME TRAVEL STAR

P44168455 – Calved: 2/4/20 – Tattoo: LE: HT320

RST TIMES A WASTIN 0124 (S00)(CHB)(OLE,HVE,REF)
 LCC FBF TIME TRAVELER 480 (OLE,HVE,REF,MSDUF)
 P43475752 JB REMETEE 213 (OLE,HVE,REF)

CRR ABOUT TIME 743 (S00)(OLE,HVE,REF,MDF)
 RST MS 1000 BLAZER 2029 (M00)(OLE,HVE,REF)
 PURPLE MILSAP 45S (S00)(OLE,HVE,REF)
 WPH BAILEY 3P (OLE,REF)

BOYD WORLDWIDE 9050 ET (S00)(OLE,HVE,REF,MSDUF,MDF)
 GLENVIEW 9050 SPIRIT A29
 P43384589 ELM-LODGE 18P SPIRIT 15S

SHF RIB EYE M326 R117 (S00)(OLE,HVE,REF)
 MSU TCF RACHAEL 22S ET
 KJ 520E VIVTOR 417L
 ELM-LODGE 27M PIXIE 18P

BMS	279																	
BIIS	335	CE	BW	WW	YW	DMI	SC	SCF	MM	M&G	MCE	MCW	UDDR	TEAT	CW	FAT	REA	MARB
CHBS	105	4.6	2.4	49	79	-0.1	0.9	11.8	19	44	3.1	75	1.20	1.20	61	-0.032	0.46	0.04

- A fancy daughter of the Denver champion, Time Traveler. She will wear a halter well.
- Co-owned with H-Town Cattle Co.



Lot 28 – Spirit’s Time Traveler Star



Lot 29 – TJL Brite Cibil 1723

LOT 29 COW

TJL BRITE CIBIL 1723

P43844008 – Calved: 9/3/17 – Tattoo: LE: 1723

STAR BRIGHT FUTURE 533P ET (S00)(DLF,HYF,JEF)
 STAR BRITE EXPECTATIONS 33Y ET (DLF,HYF,JEF)
 P43167492 STAR MISS AMERICA 12P (DLF,HYF,JEF)

REMITALL ONLINE 122L (S00)(CHB)(DLF,HYF,JEF)
 RB L1 DOMINETTE 8116 (DLF,HYF,JEF)
 STAR AMERICA BNMHPH SS MKS 68M (DLF,HYF,JEF)
 HAROLDSON'S 42H GEM 24K

GOBLE HOMEGROWN 213X
 TJL BARBIE 1419
 P43522950 BOOT HILL STAR BARBIE 601

RVP STAR 533P CAN-AM ET 57U (DLF,HYF,JEF)
 SRM MISS LILLIE 736 (DLF,HYF,JEF)
 HB STAR BATTLE GROUND 2013 (DLF,HYF,JEF)
 STAR OKALANI BARBIE 524P (DLF,HYF,JEF)

BMSIS	194																	
BIIS	250	CE	BW	WW	YW	DMI	SC	SCF	MM	M&G	MCE	MCW	UDDR	TEAT	CW	FAT	REA	MARB
CHBS	102	-6.7	5.2	56	92	0.1	0.9	6.3	25	53	1.3	85	1.20	1.20	65	-0.007	0.28	-0.03

- Another member of the “Barbie” cow family and a super calf raiser. A young and productive female.
- Pasture exposed to RVP 100W Duke 31D from March 27 to May 1, 2020. Safe in calf.



Lot 29A – LFF Fort Cybil 7F 1723 2018

LOT 29A COW

LFF FORT CYBIL 7F 1723 2018

P44132184 – Calved: 2/9/20 – Tattoo: LE: 2018

MHPH 101S UMPIRE 118U
 RVP 118U FORTITUDE ET 7F (DLF,HYF,JEF,MSUDF)
 P44007413 RVP RCY 100W YE HAW 130Y

BNMHPH 13P HEAT 101S (MDF)
 MHPH MS 68M NITA 1112R
 NJW 73S M326 TRUST 100W ET (S00)(CHB)(DLF,HYF,JEF,MSUDF)
 RVP 36N TOUCH OF GOLD ET 10T

STAR BRITE EXPECTATIONS 33Y ET (DLF,HYF,JEF)
 TJL BRITE CIBIL 1723
 P43844008 TJL BARBIE 1419

STAR BRIGHT FUTURE 533P ET (S00)(DLF,HYF,JEF)
 STAR MISS AMERICA 12P (DLF,HYF,JEF)
 GOBLE HOMEGROWN 213X
 BOOT HILL STAR BARBIE 601

BMSIS	300																	
BIIS	364	CE	BW	WW	YW	DMI	SC	SCF	MM	M&G	MCE	MCW	UDDR	TEAT	CW	FAT	REA	MARB
CHBS	106	-3.0	3.9	56	91	0.2	1.2	13.1	24	52	1.1	99	1.30	1.30	67	-0.007	0.39	0.01

- Our first daughter of Fortitude to sell. We selected him from River Valley in Canada because of his dam, “Ye Haw”, and granddam, “Touch of Gold”, the two lead donors at RVP.



Lot 30 – Grassy Run Marie 8058

LOT 30 COW

GRASSY RUN MARIE 8058

P43951319 – Calved: 2/19/18 – Tattoo: LE: 8058

TH 71U 719T MR HEREFORD 11X (S00)(DLF,HYF,JEF)
 GRASSY RUN CRUSADER 4099 ET (DLF,HYF,JEF,MSUDF)
 P43523277 MSU TCF RACHAEL ET 54N (DLF,HYF,JEF)

TH 122 71I VICTOR 719T (S00)(DLF,HYF,JEF,MSUDF,MDF)
 TH 7N 45P RITA 71U (DLF,HYF,JEF)
 REMITALL ONLINE 122L (S00)(CHB)(DLF,HYF,JEF)
 HH MISS ADV 7866 IET

GRASSY RUN SUPER SPORT 04X ET (DLF,HYF,JEF)
 GRASSY RUN MARIE 5029
 P43565177 GRASSY RUN MARIE 3039

THM DURANGO 4037 (S00)(DLF,HYF,JEF)
 NJW BW LADYSPORT DEW 78P ET (DLF,HYF,JEF)
 TH 223 71I VICTOR 406Y ET (DLF,HYF,JEF)
 GRANDVIEW CMR LADY GARRET U362 (DLF,HYF,JEF)

BMSIS	297																	
BIIS	352	CE	BW	WW	YW	DMI	SC	SCF	MM	M&G	MCE	MCW	UDDR	TEAT	CW	FAT	REA	MARB
CHBS	104	0.0	3.8	51	83	0.0	0.5	13.4	21	47	-0.2	80	1.30	1.30	66	0.013	0.40	-0.06

- Just a beautiful 2-year-old doing a superb job. It's difficult to find a prettier udder. Genetically she is bred to be a cow!
- Pasture exposed to LFF Hometown 401K 4023 1804 from May 1 to July 1, 2020.
- Pasture exposed to LFF 6101 6964 Cash 1908 from July 1 to September 15, 2020.
- Safe in calf.



Lot 30A – LFF Marie's Baby 8058 2028

LOT 30A COW

LFF MARIE'S BABY 8058 2028

P44132270 – Calved: 4/29/20 – Tattoo: LE: 2028

NJW 73S W18 HOMETOWN 10Y ET (S00)(CHB)(DLF,HYF,JEF,MSUDF,MDF)
 LFF HOMETOWN 401K 4023 1804 (DLF,HYF,JEF,MSUDF)
 P43929066 GRASSY RUN CHARITY 4023

SHE WONDER M326 W18 ET (S00)(CHB)(DLF,HYF,JEF,MSUDF)
 NJW P606 72N DAYDREAM 73S (DLF,HYF,JEF,MSUDF)
 NJW 73S M326 TRUST 100W ET (S00)(CHB)(DLF,HYF,JEF,MSUDF)
 GMF MS GINNY Y121

GRASSY RUN CRUSADER 4099 ET (DLF,HYF,JEF,MSUDF)
 GRASSY RUN MARIE 8058
 P43951319 GRASSY RUN MARIE 5029

TH 71U 719T MR HEREFORD 11X (S00)(DLF,HYF,JEF)
 MSU TCF RACHAEL ET 54N (DLF,HYF,JEF)
 GRASSY RUN SUPER SPORT 04X ET (DLF,HYF,JEF)
 GRASSY RUN MARIE 3039

BMSIS	351																	
BIIS	416	CE	BW	WW	YW	DMI	SC	SCF	MM	M&G	MCE	MCW	UDDR	TEAT	CW	FAT	REA	MARB
CHBS	114	2.1	3.2	53	91	0.1	1.0	16.0	28	55	0.4	95	1.30	1.30	71	0.003	0.48	0.05

- Don't overlook this girl! She is much younger, but high quality and genetically strong.

GMF

• grand meadows farm •

Dave and Jill Bielema
Ben and Lindsay Gandy
Reed, Kara, Fox, and Sage Loney
Matt and Kristin Capparelli
Ben Diekevers, herdsman
greatlakesherefordbeef@gmail.com
grandmeadowsfarm.com
616-292-7474



Dave and Jill Bielema • Ben and Lindsay Gandy • Reed, Kara and Fox Loney • Matt and Kristin Capparelli • greatlakesherefordbeef@gmail.com • 616-292-7474



C Double Your Miles 6077 ET – Sire of Lots 31, 32 and 32A

Lot 31 – Grand 6077 E46 Starlight H10

LOT
31
COW

GRAND 6077 E46 STARLIGHT H10 {DLF,HYF,IEF,MSUDF}

P44118260 – Calved: 3/3/20 – Tattoo: BE: H10

CRR 5280 {DLF,HYF,IEF}
C DOUBLE YOUR MILES 6077 ET {DLF,HYF,IEF,MSUDF}
P43672888 C 88X NOTICE ME 1311 ET {DLF,HYF,IEF}

CRR 719 CATAPULT 109 {SBD}{DLF,HYF,IEF,MOF}
CRR 435 KELLY 178 {DOB}{DLF,HYF,IEF}
NJW 98S R117 RIBEYE 88X ET {SBD}{DLF,HYF,IEF,MSUDF,MOF}
C NOTICE ME ET {DLF,HYF,IEF}

BAS DJF KJD OSHIE 150B ET {DLF,HYF,IEF}
GRAND STARLIGHT E46 ET {DLF,HYF,IEF,MSUDF}
P43852098 GRAND STARCROSSED 38Z ET {DLF,HYF,IEF,MSUDF}

PURPLE MB WOMANIZER 14U ET {DLF,HYF,IEF}
STAR TRF PAIGORY 277S ET {DLF,HYF,IEF}
GOLDEN OAK OUTCROSS 18U {SBD}{CMB}{DLF,HYF,IEF,MSUDF}
CSF 435 LADY 9200

BMS	379	AHIA		CEP															
BIIS	439	CE	BW	WW	YW	DMI	SC	SCF	MM	M&G	MCE	MCW	UDDR	TEAT	CW	FAT	REA	MARB	
CHBS	91	9.7	0.4	50	64	0.2	1.0	19.4	28	53	1.8	73	1.40	1.50	68	0.043	0.39	-0.03	

- This is the sleeper of our sale offering. Well-marked, correct and amiable, she has the right stuff in an attractive package.

LOT 32 COW

GRAND 6077 D52 BONITA F12 {DLF,HYF,IEF}

P43891774 – Calved: 3/8/18 – Tattoo: BE: F12

CRR 5280 {DLF,HYF,IEF}
C DOUBLE YOUR MILES 6077 ET {DLF,HYF,IEF,MSUDF}
P43672888 C 88X NOTICE ME 1311 ET {DLF,HYF,IEF}

CRR 719 CATAPULT 109 {SDD}{DLF,HYF,IEF,MDF}
CRR 435 KELLY 178 {DOD}{DLF,HYF,IEF}
N1W 98S R117 RIBEYE 88X ET {SDD}{DLF,HYF,IEF,MSUDF,MDF}
C NOTICE ME ET {DLF,HYF,IEF}

H BK CCC SR GAME CHANGER ET {CHB}{DLF,HYF,IEF,MSUDF}
GRAND BONITA D52 ET {DLF,HYF,IEF}
P43741251 CSF 435 BONITA 200U {DLF,HYF,IEF}

KJ HVH 33N REDEEM 485T ET {SDD}{DLF,HYF,IEF}
N1W 78P 63N LADYSPORT 51W ET {DLF,HYF,IEF}
DM BR SOONER {CHB}{DLF,HYF,IEF}
CSF 4002 BONITA 206S

BMSI	358																	
BIIS	426	CE	BW	WW	YW	DMI	SC	SCF	MM	M&G	MCE	MCW	UDDR	TEAT	CW	FAT	REA	MARB
CHBS	117	2.2	3.0	56	75	0.1	0.8	15.7	32	60	-0.6	62	1.60	1.60	80	0.013	0.78	0.09

- Moderate, correct, productive. This young Double Your Miles cow is doing it all well. Bred AI first try two years running.
- Bred AI May 23, 2020 to Boyd 31Z Blueprint, then pasture exposed to Grand Crossover 30Z. Safe in calf to AI date.



Lot 33 – Churchill Lady 4354B ET



Boyd 31Z Blueprint 6153 – Featured Service Sire



Lot 33A – Grand 33Z 4354 Lady H16

LOT 32A COW

GRAND 6077 F12 BONITA H14 {DLF,HYF,IEF,MSUDF}

P44118261 – Calved: 3/4/20 – Tattoo: BE: H14

CRR 5280 {DLF,HYF,IEF}
C DOUBLE YOUR MILES 6077 ET {DLF,HYF,IEF,MSUDF}
P43672888 C 88X NOTICE ME 1311 ET {DLF,HYF,IEF}

CRR 719 CATAPULT 109 {SDD}{DLF,HYF,IEF,MDF}
CRR 435 KELLY 178 {DOD}{DLF,HYF,IEF}
N1W 98S R117 RIBEYE 88X ET {SDD}{DLF,HYF,IEF,MSUDF,MDF}
C NOTICE ME ET {DLF,HYF,IEF}

C DOUBLE YOUR MILES 6077 ET {DLF,HYF,IEF,MSUDF}
GRAND 6077 D52 BONITA F12 {DLF,HYF,IEF}
P43891774 GRAND BONITA D52 ET {DLF,HYF,IEF}

CRR 5280 {DLF,HYF,IEF}
C 88X NOTICE ME 1311 ET {DLF,HYF,IEF}
H BK CCC SR GAME CHANGER ET {CHB}{DLF,HYF,IEF,MSUDF}
CSF 435 BONITA 200U {DLF,HYF,IEF}

BMSI	391																	
BIIS	457	CE	BW	WW	YW	DMI	SC	SCF	MM	M&G	MCE	MCW	UDDR	TEAT	CW	FAT	REA	MARB
CHBS	112	-0.6	3.0	54	70	0.0	0.4	18.6	24	51	-3.9	58	1.50	1.50	77	0.013	0.63	0.04

- Her heifer calf is a sweetheart that our grandson, Fox, washes, brushes and wants to bid on.

LOT 33 COW

CHURCHILL LADY 4354B ET {DLF,HYF,IEF}

P43562167 – Calved: 10/29/14 – Tattoo: LE: 4354

TH JWR SOP 166 576 TUNDRA 63N {SDD}{DLF,HYF,IEF}
H WCC/WB 668 WYARNO 9500 ET {SDD}{DLF,HYF,IEF}
P43026011 H KATHY 668 ET {DLF,HYF,IEF}

RU 20X BOULDER 57G {SDD}
TEE-JAY 707B GEMINI 16G ET
C-S PURE GOLD 98170 {SDD}{CHB}{DLF,HYF,IEF}
/S LADY PEERLESS 180L

DM BR SOONER {CHB}{DLF,HYF,IEF}
CSF 435 LADY 9200
P42977117 RED HILL MY LADY N212 {DLF,HYF,IEF}

REMITALL ONLINE 122L {SDD}{CHB}{DLF,HYF,IEF}
DM L1 DOMINETTE 901 {DLF,HYF,IEF}
C-S PURE GOLD 98170 {SDD}{CHB}{DLF,HYF,IEF}
RED HILL VICTORIA H06 L94

BMSI	342																	
BIIS	411	CE	BW	WW	YW	DMI	SC	SCF	MM	M&G	MCE	MCW	UDDR	TEAT	CW	FAT	REA	MARB
CHBS	108	-7.1	5.5	60	100	0.1	0.5	15.4	33	63	-7.1	105	1.20	1.20	62	-0.027	0.50	0.03

- This short marked, well pigmented matron traces back to 9200, a legacy female for Cottonwoods Springs and Grand Meadows Farm. A full sister was high seller in the Definitely Different 2016 sale.
- Bred AI May 23, 2020 to Boyd 31Z Blueprint 6153, then pasture exposed to Grand Crossover 30Z. Safe in calf to AI date.

LOT 33A COW

GRAND 33Z 4354 LADY H16 {DLF,HYF,IEF,MSUDF}

P44120487 – Calved: 3/5/20 – Tattoo: BE: H16

TH 122 71H VICTOR 719T {SDD}{DLF,HYF,IEF,MSUDF,MDF}
JDH VICTOR 719T 33Z ET {CHB}{DLF,HYF,IEF,MSUDF}
P43294080 JDH MS YANKEE 11U ET {DLF,HYF,IEF}

DRF JWR PRINCE VICTOR 711 {SDD}{DLF,HYF,IEF,MSUDF}
KBCR 19D DOMINETTE 122 {DLF,HYF,IEF}
AH YANKEE 10S {SDD}{CHB}
JDF MS ISAACS 075 60N {DOD}

H WCC/WB 668 WYARNO 9500 ET {SDD}{DLF,HYF,IEF}
CHURCHILL LADY 4354B ET {DLF,HYF,IEF}
P43562167 CSF 435 LADY 9200

TH JWR SOP 166 576 TUNDRA 63N {SDD}{DLF,HYF,IEF}
H KATHY 668 ET {DLF,HYF,IEF}
DM BR SOONER {CHB}{DLF,HYF,IEF}
RED HILL MY LADY N212 {DLF,HYF,IEF}

BMSI	377																	
BIIS	450	CE	BW	WW	YW	DMI	SC	SCF	MM	M&G	MCE	MCW	UDDR	TEAT	CW	FAT	REA	MARB
CHBS	115	3.4	2.2	55	91	0.2	1.1	17.2	30	58	0.9	108	1.30	1.30	69	-0.027	0.51	0.14

- Sweet heifer calf by JDH Victor 719T 33Z ET rounds out the package.



Grand Missandel 14B – Dam of Lot 34



Lot 34 – Grand 33Z 14B Missandel H12

LOT 34 COW

GRAND 33Z 14B MISSANDEI H12 {DLF,HYE,IEF,MSUDF}

44120490 – Calved: 3/4/20 – Tattoo: BE: H12

BAR S LHF 028 240 {DLF,HYE,IEF}
 BR BELLE AIR 6011 {DLF,HYE,IEF,MSUDF}
 43724674 BR BELLE 4082 ET {DLF,HYE,IEF,MSUDF}

CHURCHILL SENSATION 028X {SDD}{DLF,HYE,IEF,MSUDF}
 CHURCHILL LADY 078X {DLF,HYE,IEF}
 GOLDEN OAK OUTCROSS 18U {SDD}{CHB}{DLF,HYE,IEF,MSUDF}
 BR CSF BRIELLE 8052 ET {DLF,HYE,IEF}

BR DM SOONER 8090 ET {DLF,HYE,IEF}
 GRAND MISSANDEI 14B {DLF,HYE,IEF,MSUDF}
 P43464375 LCC 146 LEXY 301W ET

DM BR SOONER {CHB}{DLF,HYE,IEF}
 DM BR RACHEL 4126 ET
 DM BR L1 DOMINO 146 {SDD}{DLF,IEF}
 MSU WF ALEXIS L46

BMSIS	422	NAHA		GEEP																	
BIIS	516	CE	BW	WW	YW	DMI	SC	SCF	MM	M&G	MCE	MCW	UDDR	TEAT	CW	FAT	REA	MARB			
CHBS	102	3.5	1.2	53	86	0.1	1.8	19.9	42	69	4.1	102	1.40	1.50	64	0.043	0.34	0.43			

- This BR Belle Air 6011 calf is out of one of Kristin's and Jill's favorite cows. She carries an awesome pedigree, and like her mother, won't disappoint.



BR Belle Air 6011 – Sire of Lot 34

LOT 35 COW

GRAND 33Z 35B MELISANDRE H06 {DLF,HYE,IEF,MSUDF}

P44120489 – Calved: 3/1/20 – Tattoo: BE: H06

TH 122 71I VICTOR 719T {SDD}{DLF,HYE,IEF,MSUDF,MOF}
 JDH VICTOR 719T 33Z ET {CHB}{DLF,HYE,IEF,MSUDF}
 P43294080 JDH MS YANKEE 11U ET {DLF,HYE,IEF}

DRF JWR PRINCE VICTOR 71I {SDD}{DLF,HYE,IEF,MSUDF}
 KBCR 19D DOMINETTE 122 {DLF,IEF}
 AH YANKEE 10S {SDD}{CHB}
 JDF MS ISAACS 075 60N {DOD}

GOLDEN OAK OUTCROSS 18U {SDD}{CHB}{DLF,HYE,IEF,MSUDF}
 GRAND MELISANDRE 35B ET {DLF,HYE,IEF}
 P43528493 MSU TCF 19D APOLLONIA 2P {DLF,HYE,IEF}

GOLDEN-OAK FUSION 3S {DLF,HYE,IEF,MSUDF}
 GOLDEN-OAK 60D MALLORY 15M
 NJW TY WRANGLER 19D {SDD}{DLF,HYE,IEF,MSUDF}
 MSU APOLLONIA 10M {DLF,HYE,IEF}

BMSIS	375	NAHA		GEEP																	
BIIS	458	CE	BW	WW	YW	DMI	SC	SCF	MM	M&G	MCE	MCW	UDDR	TEAT	CW	FAT	REA	MARB			
CHBS	127	6.0	2.5	70	114	0.2	1.4	16.5	35	70	7.1	129	1.40	1.40	79	-0.007	0.47	0.05			

- Cow power in the making. Her pedigree and numbers make her an easy choice.



Lot 35 – Grand 33Z 35B Melisandre H06



mf
McDonald Farm

Scott McDonald
7791 Eastern Ave. S.E.
Grand Rapids, MI 49508
616-446-2146
scott@mcdonaldplumbing.com



Lot 36 – MF 486 Gretchen 711 11G ET

LOT
36
COW

MF 486 GRETCHEN 711 11G ET

P44052876 – Calved: 2/17/19 – Tattoo: BE: 11G

ECR WHO MAKER 210 ET (OLE,HYF,REF)
K RUSTIC 711 ET (OLE,HYF,REF,MSUDF) 43848894
SULL TCC HARLEY 4069B ET (OLE,HYF,REF,MSUDF)

DKF RO CASH FLOW 0245 ET (SDD)(OLE,HYF,REF)
RV GOLDEN LADY 5064 (OLE,HYF,REF)
C MILES MCKEE 2103 ET (OLE,HYF,REF,MSUDF,MOF)
LCC TWO TIMIN 438 ET (OLE,HYF,REF)

NJW 73S W18 HOMEGROWN 8Y ET (SDD)(OLE,HYF,REF,MSUDF,MOF)
DM 4128 8Y STACIE 486 ET (OLE,HYF,REF,MSUDF,MOF) P43778207
DM BR STACIE 4128 ET

SHF WONDER M326 W18 ET (SDD)(CHB)(OLE,HYF,REF,MOF)
NJW P606 72N DAYDREAM 73S (OLE,HYF,REF,MSUDF)
REMITALL ONLINE 122L (SDD)(CHB)(OLE,HYF,REF)
DM L1 DOMINETTE 901 (OLE,HYF,REF)

BMSIS	349																	
BIIS	415	CE	BW	WW	YW	DMI	SC	SCF	MM	M&G	MCE	MCW	UDDR	TEAT	CW	FAT	REA	MARB
CHBS	124	0.4	3.3	56	93	0.2	1.3	14.8	38	66	1.0	104	1.30	1.30	78	-0.007	0.65	0.06

- This Stacie daughter is the complete package! Ultra-feminine, yet powerfully designed with the extra length and depth of body she exhibits. Her sire, Rustic, was the popular Fort Worth Reserve National Champion.
- 11G sells safe in calf to Boyd Power Surge 9024 with a due date of 1/31/21. Look out for this mating!



Lot 37 – MF 486 Stacie Tide 1809 ET

LOT 37
COW

MF 486 STACIE TIDE 1809 ET

P43935118 – Calved: 4/9/18 – Tattoo: BE: 1809

CHURCHILL SENSATION 028X (S00)(DLF,HYF,REF,MDF)
CRR 028X ROLL TIDE 612 (CHB)(DLF,HYF,REF,MSUDF,MDF)
43693995 CRR 83Y AMBER 418 (S00)(DLF,HYF,REF,MSUDF)

UPS DOMINO 3027 (S00)(DLF,HYF,REF,MSUDF)
CHURCHILL LADY 7202T ET (DLF,HYF,REF)
NIW 98S 100W HANDSHAKE 83Y (CHB)(DLF,HYF,REF)
CRR 021 AMBER 2102

NIW 73S W18 HOMEGROWN 8Y ET (S00)(DLF,HYF,REF,MSUDF,MDC)
DM 4128 8Y STACIE 486 ET (DLF,HYF,REF,MSUDF,MDC)
P43778207 DM BR STACIE 4128 ET

SHF WONDER M326 W18 ET (S00)(CHB)(DLF,HYF,REF,MDC)
NIW P606 72N DAYDREAM 73S (DLF,HYF,REF,MSUDF)
REMITALL ONLINE 122L (S00)(CHB)(DLF,HYF,REF)
DM L1 DOMINETTE 901 (DLF,HYF,REF)

BMSIS	413																	
BIIS	493	CE	BW	WW	YW	DMI	SC	SCF	MM	M&G	MCE	MCW	UDDR	TEAT	CW	FAT	REA	MARB
CHBS	108	1.2	3.1	59	97	0.4	1.8	20.2	41	71	0.6	78	1.20	1.30	70	-0.007	0.48	0.15

- Very pretty Stacie 2-year-old that is real angular, bold in her rib cage, feminine about her head and neck and really nice uddered. She is doing a super job raising her Logic heifer calf.
- Sells pasture exposed to Chez/Pugh/Hara Logic 8815 ET from 4/25/2020 to 8/15/2020 with an approximate due date of 2/15/2021.

LOT 37A
COW

MF 1809 HARMONY 8815F 210H

P44163405 – Calved: 4/1/20 – Tattoo: BE: 210H

CRR 719 CATAPULT 109 (S00)(DLF,HYF,REF,MDF)
CHEZ/PUGH/HARA LOGIC 8815F ET (DLF,HYF,REF,MSUDF)
P43964617 R SWEET RED WINE 039 (DLF,HYF,REF)

TH 122 711 VICTOR 719T (S00)(DLF,HYF,REF,MSUDF,MDF)
CRR 4037 ECLIPSE 808 (DLF,HYF,REF)
MSU TCF REVOLUTION 4R (S00)(CHB)(DLF,HYF,REF)
R MISS WRANGLER 207 (DLF,HYF,REF)

CRR 028X ROLL TIDE 612 (CHB)(DLF,HYF,REF,MSUDF,MDF)
MF 486 STACIE TIDE 1809 ET
P43935118 DM 4128 8Y STACIE 486 ET (DLF,HYF,REF,MSUDF)

CHURCHILL SENSATION 028X (S00)(DLF,HYF,REF,MDF)
CRR 83Y AMBER 418 (S00)(DLF,HYF,REF,MSUDF)
NIW 73S W18 HOMEGROWN 8Y ET (S00)(DLF,HYF,REF,MSUDF,MDC)
DM BR STACIE 4128 ET

BMSIS	385																	
BIIS	461	CE	BW	WW	YW	DMI	SC	SCF	MM	M&G	MCE	MCW	UDDR	TEAT	CW	FAT	REA	MARB
CHBS	106	2.4	3.1	60	97	0.3	1.4	18.6	36	65	0.7	81	1.10	1.10	69	0.013	0.47	0.09

- Fancy, level topped, complete and hairy Logic heifer calf. Harmony comes with extra show pieces.



Lot 37A – MF 1809 Harmony 8815F 210H



DM 4128 84 Stacie 486 ET – Donor Dam of Lot 36, 37 and 38



Lot 38 – MF 486 Stacie Miles 2F ET

LOT 38 COW

MF 486 STACIE MILES 2F ET

P43935122 – Calved: 3/1/18 – Tattoo: BE: 2F

CRR 5280 (DLF,HYF,JEF)
 C DOUBLE YOUR MILES 6077 ET (DLF,HYF,JEF,MSUDF)
 P43672888 C 88X NOTICE ME 1311 ET (DLF,HYF,JEF)

CRR 719 CATAPULT 109 (SBD)(DLF,HYF,JEF,MDF)
 CRR 435 KELLY 178 (DDB)(DLF,HYF,JEF)
 NJW 98S R117 RIBEYE 88X ET (SBD)(DLF,HYF,JEF,MSUDF,MDF)
 C NOTICE ME ET (DLF,HYF,JEF)

NJW 73S W18 HOMEGROWN 8Y ET (SBD)(DLF,HYF,JEF,MSUDF,MDC)
 DM 4128 8Y STACIE 486 ET (DLF,HYF,JEF,MSUDF,MDC)
 P43778207 DM BR STACIE 4128 ET

SHF WONDER M326 W18 ET (SBD)(CHB)(DLF,HYF,JEF,MDC)
 NJW P606 72N DAYDREAM 73S (DLF,HYF,JEF,MSUDF)
 REMITALL ONLINE 122L (SBD)(CHB)(DLF,HYF,JEF)
 DM L1 DOMINETTE 901 (DLF,HYF,JEF)

BMS	395																	
BIIS	463	CE	BW	WW	YW	DMI	SC	SCF	MM	M&G	MCE	MCW	UDDR	TEAT	CW	FAT	REA	MARB
CHBS	110	2.5	2.6	55	79	0.0	1.0	19.2	29	57	-1.6	71	1.40	1.40	73	0.013	0.48	0.03

- Freckled face Stacie two-year-old that did a really nice job raising a very heavy show steer prospect. This Double Your Miles daughter moves with a lot of flex and ease, attractively marked and level topped.
- 2F sells pasture exposed to Boyd/Pugh/Hara Logic 8815 ET from 4/25/2020 to 8/15/2020 with an approximate due date of 3/26/2021.

LOT 38A STEER

STEER

Calved: 2/26/20

- Sire: CHEZ/Pugh/Hara Logic 8815 ET



**DelHawk Amara 176 ET – Maternal sister to Lots 36, 37 and 38
 2020 Southeastern Regional Junior Hereford Show Champion
 2020 Ft. Worth Division II Champion
 2020 NWSS Class Winner**



Lot 39 – MF 6797 Gail 2Z 907G

LOT 39 COW

MF 6797 GAIL 2Z 907G

P44155263 – Calved: 3/13/19 – Tattoo: BE: 907G

TH 122 71I VICTOR 719T (S00)(DLF,HYF,REF,MSUDF,MDF)
 NPH 719T NEW HORIZON 2Z (DLF,HYF,REF)
 P43317600 MSU KEEPSAKE 21X ET (DLF,HYF,REF)

BR COPPER 124Y (DLF,HYF,REF)
 BR NATALIE 6797 ET (DLF,HYF,REF,MSUDF)
 P43775993 BR DM BRYANNA 8021 ET (DLF,HYF,REF,MSUDF)

DRF JWR PRINCE VICTOR 71I (S00)(DLF,HYF,REF,MSUDF)
 KBCR 19D DOMINETTE 122 (DLF,REF)
 REMITALL ONLINE 122L (S00)(CHB)(DLF,HYF,REF)
 MSU KEEPSAKE 32N (DLF,HYF,REF)

BR CSF COPPER ET (DLF,HYF,REF,MSUDF)
 BR ABIGAIL 8130 ET (DLF,HYF,REF)
 BR MOLER ET (DLF,REF)
 DM LI DOMINETTE 90I (DLF,HYF,REF)

BMSIS	304																	
BIIS	379	CE	BW	WW	YW	DMI	SC	SCF	MM	M&G	MCE	MCW	UDDR	TEAT	CW	FAT	REA	MARB
CHBS	109	1.6	3.5	64	98	0.4	0.9	13.0	28	60	-2.3	89	1.20	1.30	71	-0.027	0.46	0.08

- Gail is the first calf out of our feature cow in the Breeders Cup and her pedigree is loaded with some of the great cows in the breed: 8021, 901, 8130, 820, 32N and 5082 twice! This really striking Horizon daughter is smooth shouldered, long skeletoned and wide pinned.
- She sells safe in calf to Boyd Power Surge 9024 with a due date of 1/31/2021.

LOT 40 COW

MF 1306 GENEVA 71I 902G

P44052904 – Calved: 1/18/19 – Tattoo: BE: 902G

ECR WHO MAKER 210 ET (DLF,HYF,REF)
 K RUSTIC 71I ET (DLF,HYF,REF,MSUDF)
 43848894 SULL TCC HARLEY 4069B ET (DLF,HYF,REF,MSUDF)

NJW 73S M326 TRUST 100W ET (S00)(CHB)(DLF,HYF,REF,MSUDF)
 MF 308N ANNETTE 1306 ET
 P43403116 MF 62J NATALIE 122L 308N (DLF,HYF,REF)

DKF RO CASH FLOW 0245 ET (S00)(DLF,HYF,REF)
 RV GOLDEN LADY 5064 (DLF,HYF,REF)
 C MILES MCKEE 2103 ET (DLF,HYF,REF,MSUDF,MDF)
 LCC TWO TIMIN 438 ET (DLF,HYF,REF)

KCF BENNETT 3008 M326 (S00)(DLF,HYF,REF,MDF)
 NJW P606 72N DAYDREAM 73S (DLF,HYF,REF,MSUDF)
 REMITALL ONLINE 122L (S00)(CHB)(DLF,HYF,REF)
 MSU MISS WRANGLER 62J

BMSIS	317																	
BIIS	386	CE	BW	WW	YW	DMI	SC	SCF	MM	M&G	MCE	MCW	UDDR	TEAT	CW	FAT	REA	MARB
CHBS	135	-1.0	4.0	60	104	0.3	1.2	11.8	35	65	3.0	129	1.20	1.20	84	-0.027	0.74	0.08

- If you like them powerfully constructed, this big framed, stout made heifer with massive bone work is for you. She traces back many generations in our program to 9F our Denver National Champion!
- Geneva sells safe in calf to Boyd Power Surge 9024 with a due date of 1/31/2021.



Lot 40 – MF 1306 Geneva 71I 902G



Lot 41 – MF 339A Giselle 711 9G ET



BBH 743 Adora 539A

LOT
41
COW

MF 339A GISELLE 711 9G ET

44052874 – Calved: 2/14/19 – Tattoo: BE: 9G

ECR WHO MAKER 210 ET (OLE,HYF,IEF)
K RUSTIC 711 ET (OLE,HYF,IEF,MSUDF)
43848894 SULL TCC HARLEY 4069B ET (OLE,HYF,IEF,MSUDF)

DKF RO CASH FLOW 0245 ET (SDD)(OLE,HYF,IEF)
RV GOLDEN LADY 5064 (OLE,HYF,IEF)
C MILES MCKEE 2103 ET (OLE,HYF,IEF,MSUDF,MOF)
LCC TWO TIMIN 438 ET (OLE,HYF,IEF)

CRR ABOUT TIME 743 (SDD)(OLE,HYF,IEF,MOF)
BBH 743 ADORA 339A (OLE,HYF,IEF,MSUDF)
P43407019 BBH 711 TANYA 911W (DOB)

THM DURANGO 4037 (SDD)(OLE,HYF,IEF)
CRR D03 CASSIE 206 (OLE,HYF,IEF)
DRF JWR PRINCE VICTOR 711 (SDD)(OLE,HYF,IEF,MSUDF)
BBH 427P TANYA 756T

BMSI 329

BIIS	391	CE	BW	WW	YW	DMI	SC	SCF	MM	M&G	MCE	MCW	UDDR	TEAT	CW	FAT	REA	MARB
CHBS	117	-3.6	4.5	62	101	0.4	1.1	14.3	34	65	-1.4	127	1.15	1.10	76	-0.027	0.63	-0.09

- Out of the famed Adora 339A cow this daughter of Forth Worth Reserve Champion Rustic is smooth shouldered, sound and stout footed.
- Giselle sells pasture exposed to Boyd/Pugh/Hara Logic 8815 ET from 4/25/2020 to 8/15/2020.



Lot 42 – Church View Leading Lady 422G

LOT
42
COW

CHURCH VIEW LEADING LADY 422G

P44016341 – Calved: 1/27/19 – Tattoo: RE: CVF/LE: 422G

HYALITE ON TARGET 936 (SDD)(OLE,HYF,IEF,MSUDF)
R LEADER 6964 (CHB)(OLE,HYF,IEF,MSUDF)
P43500058 R MISS REVOLUTION 1009 (DOB)(OLE,HYF,IEF)

SCHU-LAR ON TARGET 22S (SDD)(OLE,HYF,IEF,MSUDF)
HYALITE S LASS 310 (OLE,HYF,IEF)
MSU TCF REVOLUTION 4R (SDD)(CHB)(OLE,HYF,IEF)
R MISS WRANGLER 3007

THM SELECT 0823 ET (OLE,HYF,IEF)
CHURCH VIEW SELENA 930B (DOB)
P43476065 SLAYTON 922 OF HATTIE 706 511

THM SOLUTION 6056
THM KELLY 29F 3043 (OLE,HYF,IEF)
SLAYTON 706 OF BOON 509 10H
SLAYTON 511 OF HATTIE 618 P60G

BMSI 411

BIIS	482	CE	BW	WW	YW	DMI	SC	SCF	MM	M&G	MCE	MCW	UDDR	TEAT	CW	FAT	REA	MARB
CHBS	107	6.0	0.9	53	83	0.1	1.2	20.3	29	55	5.5	85	1.20	1.20	71	0.033	0.44	0.09

- This Leader daughter has that elegant brood cow look written all over her! Very extended in her build, long necked and correct on her feet and legs. Out of a super milking cow family from the Church View program.
- 422G sells safe in calf to Boyd Power Surge 9024 with a due date of 1/31/2021.



Boyd Power Surge 9024 – Featured Service Sire

LOT
Ref
SIRE

BOYD POWER SURGE 9024 (OLE,HYF,IEF,MSUDF)

P44004782 – Calved: 1/6/19 – Tattoo: BE: 9024

R LEADER 6964 (CHB)(OLE,HYF,IEF,MSUDF)
BOYD 312 BLUEPRINT 6153 (OLE,HYF,IEF,MSUDF,MOF)
P43764491 NJW 91H 100W RITA 31Z ET (OLE,HYF,IEF)

HYALITE ON TARGET 936 (SDD)(OLE,HYF,IEF,MSUDF)
R MISS REVOLUTION 1009 (DOB)(OLE,HYF,IEF)
NJW 73S M326 TRUST 100W ET (SDD)(CHB)(OLE,HYF,IEF,MSUDF)
REMITALL RITA 91H (OLE,HYF,IEF)

TH 403A 475Z PIONEER 358C ET (OLE,HYF,IEF,MSUDF)
TH 329 358C LANA 76E (OLE,HYF,IEF,MSUDF)
P43818744 FTF 7227 MS LOGIC 329A (OLE,HYF,IEF)

TH 89T 755T STOCKMAN 475Z (OLE,HYF,IEF)
TH 71U 17Y RITA 403A (OLE,HYF,IEF)
KJ C&L J119 LOGIC 023R ET (SDD)(OLE,HYF,IEF)
FTF CHICK A BOOM 7227T (OLE,HYF,IEF)

BMSI 347

BIIS	426	CE	BW	WW	YW	DMI	SC	SCF	MM	M&G	MCE	MCW	UDDR	TEAT	CW	FAT	REA	MARB
CHBS	115	8.8	2.4	70	119	1.1	1.5	16.1	28	63	4.7	112	1.30	1.30	85	0.043	0.69	0.01



Lot 43 – MF 7611 Hundley 7457 14H ET

LOT
43
COW

MF 7611 HUNDLEY 7457 14H ET

P44164006 – Calved: 3/25/20 – Tattoo: BE: 14H

UPS SENSATION 2296 ET (OLE,HYF,REF,MSUDF,MDF)
H DEBERARD 7454 ET (OLE,HYF,REF,MSUDF,MDF)
P43799239 RST GAT NST Y79D LADY 54B ET (OLE,HYF,REF,MSUDF)

CHURCHILL SENSATION 028X (SDD)(OLE,HYF,REF,MDF)
UPS JT MISS NEON 7811 1ET (OLE,HYF,REF)
WORR OWEN TANKERAY Y79D ET (OLE,HYF,REF,MSUDF)
H H LADY MAXIUM 111 ET (OLE,HYF,REF)

ECR 2296 FLO SENSATION 4387 ET (OLE,HYF,REF,MSUDF)
RV VIRG'S SENSATION 7611 (OLE,HYF,REF)
P43868327 BAR JZ VIRGINIA 611Z (DOD)(OLE,HYF,REF,MSUDF)

UPS SENSATION 2296 ET (OLE,HYF,REF,MSUDF,MDF)
ECR LADY FLOW 212ET (OLE,HYF,REF)
TH 122 711 VICTOR 719T (SDD)(OLE,HYF,REF,MSUDF,MDF)
BAR JZ ISABELLA 272X (DOD)

BMS	327																	
BIIS	391	CE	BW	WW	YW	DMI	SC	SCF	MM	M&G	MCE	MCW	UDDR	TEAT	CW	FAT	REA	MARB
CHBS	111	-5.6	6.7	66	107	0.5	1.2	14.6	35	68	-3.4	120	1.30	1.30	76	0.003	0.70	-0.12

- National Champion DeBerard daughter that is powerful in her make up with a lot of genuine depth in her underline. Hundley is the easy feeding kind that is bold and expressive in her stifle muscle and correct and comfortable at the ground. Her dam is the 719T daughter "JJ" that stood 3rd in a really tough spring yearling class in Denver last year.

LOT
44
COW

MF 5002 HYACINTH 100W 201H

P44164357 – Calved: 1/6/20 – Tattoo: B: 201H

KCF BENNETT 3008 M326 (SDD)(OLE,HYF,REF,MDF)
NJW 73S M326 TRUST 100W ET (SDD)(CHB)(OLE,HYF,REF,MSUDF)
P43002897 NJW P606 72N DAYDREAM 73S (OLE,HYF,REF,MSUDF)

RRH MR FELT 3008 (SDD)(CHB)(OLE,HYF,REF)
KCF MISS 459 F284
PW VICTOR BOOMER P606 (SDD)(OLE,HYF,REF,MDF)
NJW 94J DEW 72N (OLE,HYF,REF)

BOYD POWERHOUSE 2028 (OLE,HYF,REF)
BOYD SOUTHERN BELLE 5002
P43572669 TDP SWEETPEA 244 (OLE,HYF,REF)

TH 71U 719T MR HEREFORD 11X (SDD)(OLE,HYF,REF)
NJW 8S 4037 DOREEN 108X (OLE,HYF,REF)
SPARKS TREND 2007 (SDD)(CHB)(OLE,HYF,REF,MSUDF)
WAGNERS SWEETPEA 9121 (OLE,HYF,REF)

BMS	391																	
BIIS	464	CE	BW	WW	YW	DMI	SC	SCF	MM	M&G	MCE	MCW	UDDR	TEAT	CW	FAT	REA	MARB
CHBS	128	-0.2	3.4	62	102	0.3	1.1	17.5	33	63	-1.8	122	1.20	1.20	81	-0.017	0.62	0.05

- This Trust daughter is a twin and you would never know it! Her Powerhouse dam was a feature cow in the River Valley program in Canada. This super cow prospect is a high growth female that carries a lot of length in her skeleton and has pigment around both eyes.



Lot 44 – MF 5002 Hyacinth 100W 201H



Lot 45 – MF 104Y Glory 711 1910 ET

LOT 45 COW

MF 104Y GLORY 711 1910 ET

P44052900 – Calved: 4/19/19 – Tattoo: BE: 1910

ECR WHO MAKER 210 ET (OLE,HYF,REF)
 K RUSTIC 711 ET (OLE,HYF,REF,MSUDF) 43848894
 SULL TCC HARLEY 4069B ET (OLE,HYF,REF,MSUDF)

DKF RO CASH FLOW 0245 ET (SDD)(OLE,HYF,REF)
 RV GOLDEN LADY 5064 (OLE,HYF,REF)
 C MILES MCKEE 2103 ET (OLE,HYF,REF,MSUDF,MOF)
 LCC TWO TIMIN 438 ET (OLE,HYF,REF)

CRR ABOUT TIME 743 (SDD)(OLE,HYF,REF,MOF)
 MF 914W ABOUT YASMINE 104Y (OLE,HYF,REF)
 P43212822 PCR MF LACEY DUTCHESS 914W (OLE,HYF,REF)

THM DURANGO 4037 (SDD)(OLE,HYF,REF)
 CRR D03 CASSIE 206 (OLE,HYF,REF)
 HCC LEGACY S01 ET (SDD)(CHB)(OLE,HYF,REF)
 PCR DUTCHESS ANNE 657S (SDD)(OLE,HYF,REF)

BMSI	343																	
BIIS	405	CE	BW	WW	YW	DMI	SC	SCF	MM	M&G	MCE	MCW	UDDR	TEAT	CW	FAT	REA	MARB
CHBS	126	-2.9	3.2	53	89	0.2	0.8	14.3	30	57	-0.5	110	1.20	1.20	79	-0.027	0.71	0.06

- This Rustic/Yasmine daughter is really bold in her center body with that show heifer swoop to her underline.
- Glory sells pasture exposed to Chez/Pugh/Hara Logic 8815 ET from 4/25/2020 to 8/15/2020.



Lot 46 – MF 1044 Gabby 4030 16G ET

LOT 46 COW

MF 1044 GABBY 4030 16G ET

P44052918 – Calved: 5/9/19 – Tattoo: BE: 16G

NJW 73S 980 HUTTON 109Z ET (CHB)(OLE,HYF,REF,MSUDF,MOF)
 BR HUTTON 4030 ET (OLE,HYF,REF,MSUDF) P43542789
 BR CSF BRIELLE 8052 ET (OLE,HYF,REF)

CRR HELTON 980 (SDD)(OLE,HYF,REF)
 NJW P606 72N DAYDREAM 73S (OLE,HYF,REF,MSUDF)
 DM BR SOONER (CHB)(OLE,HYF,REF)
 BR GABRIELLE 508Z (OLE,HYF,REF)

CRR ABOUT TIME 743 (SDD)(OLE,HYF,REF,MOF)
 MF 914W ABOUT YASMINE 104Y (OLE,HYF,REF)
 P43212822 PCR MF LACEY DUTCHESS 914W (OLE,HYF,REF)

THM DURANGO 4037 (SDD)(OLE,HYF,REF)
 CRR D03 CASSIE 206 (OLE,HYF,REF)
 HCC LEGACY S01 ET (SDD)(CHB)(OLE,HYF,REF)
 PCR DUTCHESS ANNE 657S (SDD)(OLE,HYF,REF)

BMSI	354																	
BIIS	414	CE	BW	WW	YW	DMI	SC	SCF	MM	M&G	MCE	MCW	UDDR	TEAT	CW	FAT	REA	MARB
CHBS	111	1.6	2.7	51	86	0.2	0.5	16.5	25	50	0.8	90	1.20	1.20	70	-0.007	0.54	0.03

- Gabby is way better than her picture. One of my favorite, bred out of the very popular 4030 Barber bull known for making super uddered females! She is a very practically designed female – level topped, square hipped and good underlined.
- She was pasture exposed to Chez/Pugh/Hara Logic 8815 ET from 4/25/2020 to 8/20/2020.



Lot 47 – MF 104Y Glorious 711 1905 ET

LOT 47 COW

MF 104Y GLORIOUS 711 1905 ET

P44052889 – Calved: 4/8/19 – Tattoo: BE: 1905

ECR WHO MAKER 210 ET (OLE,HYF,REF)
 K RUSTIC 711 ET (OLE,HYF,REF,MSUDF) 43848894
 SULL TCC HARLEY 4069B ET (OLE,HYF,REF,MSUDF)

DKF RO CASH FLOW 0245 ET (SDD)(OLE,HYF,REF)
 RV GOLDEN LADY 5064 (OLE,HYF,REF)
 C MILES MCKEE 2103 ET (OLE,HYF,REF,MSUDF,MOF)
 LCC TWO TIMIN 438 ET (OLE,HYF,REF)

CRR ABOUT TIME 743 (SDD)(OLE,HYF,REF,MOF)
 MF 914W ABOUT YASMINE 104Y (OLE,HYF,REF)
 P43212822 PCR MF LACEY DUTCHESS 914W (OLE,HYF,REF)

THM DURANGO 4037 (SDD)(OLE,HYF,REF)
 CRR D03 CASSIE 206 (OLE,HYF,REF)
 HCC LEGACY S01 ET (SDD)(CHB)(OLE,HYF,REF)
 PCR DUTCHESS ANNE 657S (SDD)(OLE,HYF,REF)

BMSI	343																	
BIIS	405	CE	BW	WW	YW	DMI	SC	SCF	MM	M&G	MCE	MCW	UDDR	TEAT	CW	FAT	REA	MARB
CHBS	126	-2.9	3.2	53	89	0.2	0.8	14.3	30	57	-0.5	110	1.20	1.20	79	-0.027	0.71	0.06

- Short marked, extremely up headed Rustic/Yasmine with some width down her top.
- She sells safe in calf to Chez/Pugh/Hara Logic 8815 ET with a due date of 1/31/2021.



Lot 48 – MF 1044 Hamilton 8815F 2005 ET

LOT
48
COW

MF 104Y HAMILTON 8815F 2005 ET

44163976 – Calved: 3/31/20 – Tattoo: BE: 2005

CRR 719 CATAPULT 109 (S00)(DLE,HVE,REF,MDF)
CHEZ/PUGH/HARA LOGIC 8815F ET (DLE,HVE,REF,MSUDF)
P43964617 R SWEET RED WINE 039 (DLE,HVE,REF)

TH 122 7H VICTOR 719T (S00)(DLE,HVE,REF,MSUDF,MDF)
CRR 4037 ECLIPSE 808 (DLE,HVE,REF)
MSU TCF REVOLUTION 4R (S00)(CHB)(DLE,HVE,REF)
R MISS WRANGLER 207 (DLE,HVE,REF)

CRR ABOUT TIME 743 (S00)(DLE,HVE,REF,MDF)
MF 914W ABOUT YASMINE 104Y (DLE,HVE,REF)
P43212822 PCR MF LACEY DUTCHESS 914W (DLE,HVE,REF)

THM DURANGO 4037 (S00)(DLE,HVE,REF)
CRR D03 CASSIE 206 (DLE,HVE,REF)
HCC LEGACY S01 ET (S00)(CHB)(DLE,HVE,REF)
PCR DUTCHESS ANNE 657S (S00)(DLE,HVE,REF)

BMSIS	353																	
BIIS	419	CE	BW	WW	YW	DMI	SC	SCF	MM	M&G	MCE	MCW	UDDR	TEAT	CW	FAT	REA	MARB
CHBS	108	0.3	2.6	54	87	0.2	0.8	16.4	26	53	-0.8	91	1.00	1.10	68	0.003	0.50	0.05

- Probably my favorite female in our offering! The Hamilton heifer is very striking! She is super stout, very shapely in her quarter, wide topped and pinned. This dehorned, dark red, Logic/Yasine has all the "bells and whistles"!

LOT
49
COW

MF 104Y HANNAH 8815F 13H ET

P44162372 – Calved: 3/19/20 – Tattoo: BE: 13H

CRR 719 CATAPULT 109 (S00)(DLE,HVE,REF,MDF)
CHEZ/PUGH/HARA LOGIC 8815F ET (DLE,HVE,REF,MSUDF)
P43964617 R SWEET RED WINE 039 (DLE,HVE,REF)

TH 122 7H VICTOR 719T (S00)(DLE,HVE,REF,MSUDF,MDF)
CRR 4037 ECLIPSE 808 (DLE,HVE,REF)
MSU TCF REVOLUTION 4R (S00)(CHB)(DLE,HVE,REF)
R MISS WRANGLER 207 (DLE,HVE,REF)

CRR ABOUT TIME 743 (S00)(DLE,HVE,REF,MDF)
MF 914W ABOUT YASMINE 104Y (DLE,HVE,REF)
P43212822 PCR MF LACEY DUTCHESS 914W (DLE,HVE,REF)

THM DURANGO 4037 (S00)(DLE,HVE,REF)
CRR D03 CASSIE 206 (DLE,HVE,REF)
HCC LEGACY S01 ET (S00)(CHB)(DLE,HVE,REF)
PCR DUTCHESS ANNE 657S (S00)(DLE,HVE,REF)

BMSIS	353																	
BIIS	419	CE	BW	WW	YW	DMI	SC	SCF	MM	M&G	MCE	MCW	UDDR	TEAT	CW	FAT	REA	MARB
CHBS	108	0.3	2.6	54	87	0.2	0.8	16.4	26	53	-0.8	91	1.00	1.10	68	0.003	0.50	0.05

- Hannah is an ultra-complete, fault free heifer that is very extended and neat about her lines. She is short marked and refined in her head shape. Another full sister is our featured heifer in the Breeders Cup. This mating packs some punch! Yasmynes have won at all levels including Denver and Junior Nationals!



Lot 49 – MF 1044 Hannah 8815F 13H ET



MF 914 About Yasmine 104Y



MF 308N Caitlin 13C ET – Dam of Lot 50

Lot 50 – MF 13C Hayden 8815F 2013 ET



MF 13C HAYDEN 8815F 2013 ET

P44164236 – Calved: 4/17/20 – Tattoo: BE: 2013

CRR 719 CATAPULT 109 (S00)(DLF,HVE,REF,MDF)
CHEZ/PUGH/HARA LOGIC 8815F ET (DLF,HVE,REF,MSUDF)
P43964617 R SWEET RED WINE 039 (DLF,HVE,REF)

TH 122 7H VICTOR 719T (S00)(DLF,HVE,REF,MSUDF,MDF)
CRR 4037 ECLIPSE 808 (DLF,HVE,REF)
MSU TCF REVOLUTION 4R (S00)(CHB)(DLF,HVE,REF)
R MISS WRANGLER 207 (DLF,HVE,REF)

BR CURRENCY 8144 ET (DLF,HVE,REF)
MF 308N CAITLIN 13C ET (DLF,HVE,REF,MSUDF)
P43610410 MF 62J NATALIE 122L 308N (DLF,HVE,REF)

DM BR SOONER (CHB)(DLF,HVE,REF)
BR GABRIELLE 5082 (DLF,HVE,REF)
REMITALL ONLINE 122L (S00)(CHB)(DLF,HVE,REF)
MSU MISS WRANGLER 62J

BMSI	254																	
BIIS	320	CE	BW	WW	YW	DMI	SC	SCF	MM	M&G	MCE	MCW	UDDR	TEAT	CW	FAT	REA	MARB
CHBS	113	2.3	2.8	59	95	0.3	1.0	9.4	26	55	1.4	96	1.10	1.10	75	0.023	0.50	0.05

- Show heifer alert! Hayden will really catch your eye. She is super extended in her head and neck, stout made and level from hooks to pins. This super young April prospect by Logic is an ET daughter out of our feature cow Caitlyn that was our high seller to the Jones family in Wisconsin two years ago. Caitlyn recently was cow/calf champion at the Regional Junior Show as a five-year-old. BJ loves her calves this year!



MF 4F HOLLAND 8815F 207H

P44163403 – Calved: 3/4/20 – Tattoo: BE: 207H

CRR 719 CATAPULT 109 (S00)(DLF,HVE,REF,MDF)
CHEZ/PUGH/HARA LOGIC 8815F ET (DLF,HVE,REF,MSUDF)
P43964617 R SWEET RED WINE 039 (DLF,HVE,REF)

TH 122 7H VICTOR 719T (S00)(DLF,HVE,REF,MSUDF,MDF)
CRR 4037 ECLIPSE 808 (DLF,HVE,REF)
MSU TCF REVOLUTION 4R (S00)(CHB)(DLF,HVE,REF)
R MISS WRANGLER 207 (DLF,HVE,REF)

BR BELLE AIR 6011 (DLF,HVE,REF,MSUDF)
MF 5C FAYE BELLE 4F ET
P43935123 RJL LCC MISS POKER FACE 5C ET (DLF,HVE,REF,MSUDF)

BAR S LHF 028 240 (DLF,HVE,REF)
BR BELLE 4082 ET (DLF,HVE,REF,MSUDF)
CHAC MASON 2214 (CHB)(DLF,HVE,REF)
SRH MISS KITTY 1001 ET (DLF,HVE,REF)

BMSI	331																		
BIIS	406	CE	BW	WW	YW	DMI	SC	SCF	MM	M&G	MCE	MCW	UDDR	TEAT	CW	FAT	REA	MARB	
CHBS	106	1.1	3.5	59	96	0.2	1.4	14.6	31	60	1.2	96	1.00	1.00	68	0.033	0.48	0.13	

- Holland has three National Champions in her immediate pedigree: Logic, Belle Aire and Poker Face! This goggle-eyed girl is really feminine about her head and neck and doesn't sacrifice any maternal traits in the center of her body. She is extremely proportional about her design with a structurally correct hind leg.



RJL LCC Miss Poker Face 5C ET – Grandam of Lot 51

Lot 51 – MF 4F Holland 8815F 207H



BR Amy Rielle 553B ET – Dam of Lot 52

Lot 52 – MF 5538 S Hagar 4030 7H ET



MF 5538 S HAGAR 4030 7H ET

P44162615 – Calved: 1/10/20 – Tattoo: BE: 7H

NJW 73S 980 HUTTON 1092 ET (CHB)(DLF,HVF,IEF,MSUDF,MDF)
 BR HUTTON 4030ET (DLF,HVF,IEF,MSUDF)
 P43542789 BR CSF BRIELLE 8052 ET (DLF,HVF,IEF)

CRR HELTON 980 (SDD)(DLF,HVF,IEF)
 NJW P606 72N DAYDREAM 73S (DLF,HVF,IEF,MSUDF)
 DM BR SOONER (CHB)(DLF,HVF,IEF)
 BR GABRIELLE 5082 (DLF,HVF,IEF)

DM BR SOONER (CHB)(DLF,HVF,IEF)
 BR AMY RIELLE 5538 ET (DLF,HVF,IEF,MSUDF)
 P43675993 BR GABRIELLE 5082 (DLF,HVF,IEF)

REMITALL ONLINE 122L (SDD)(CHB)(DLF,HVF,IEF)
 DM LI DOMINETTE 901 (DLF,HVF,IEF)
 BR LANSING 3060
 BR GOLDRIEL 3029 ET (DLF,HVF,IEF)

BMSIS	333																	
BIIS	401	CE	BW	WW	YW	DMI	SC	SCF	MM	M&G	MCE	MCW	UDDR	TEAT	CW	FAT	REA	MARB
CHBS	120	2.9	3.7	59	101	0.4	0.6	14.7	27	57	0.1	83	1.10	1.10	79	0.003	0.55	0.04

• A lot of punch in this pedigree! Hagar's dam Amy Rielle is the Sooner/Gabrielle that was National Champion Bred and Owned Female at the Junior National for Riley Barber! His sire 4030 is well known for making beautifully uddered daughters. 7H himself is expressive in his quarter, bold in his rib shape, and really correct and sound in his skeletal make up! He is built to last many breeding seasons!



MF 403A HENLEY 4030 2H ET

P44165352 – Calved: 1/2/20 – Tattoo: BE: 2H

NJW 73S 980 HUTTON 1092 ET (CHB)(DLF,HVF,IEF,MSUDF,MDF)
 BR HUTTON 4030ET (DLF,HVF,IEF,MSUDF)
 P43542789 BR CSF BRIELLE 8052 ET (DLF,HVF,IEF)

CRR HELTON 980 (SDD)(DLF,HVF,IEF)
 NJW P606 72N DAYDREAM 73S (DLF,HVF,IEF,MSUDF)
 DM BR SOONER (CHB)(DLF,HVF,IEF)
 BR GABRIELLE 5082 (DLF,HVF,IEF)

TH 22R 16S LAMBEAU 17Y (DLF,HVF,IEF,MSUDF,MDF)
 TH 71U 17Y RITA 403A (DLF,HVF,IEF)
 P43371431 TH 7N 45P RITA 71U (DLF,HVF,IEF)

TH 121L 63N TUNDRA 16S (DLF,HVF,IEF)
 TH 62N 3L KELSEY 22R (DLF,HVF,IEF)
 NJW FHF 9710 TANK 45P (SDD)(DLF,HVF,IEF,MDF)
 TH 814H 3L RITA 7N (DOD)(DLF,HVF,IEF)

BMSIS	341																	
BIIS	413	CE	BW	WW	YW	DMI	SC	SCF	MM	M&G	MCE	MCW	UDDR	TEAT	CW	FAT	REA	MARB
CHBS	98	5.3	2.1	59	96	0.1	0.9	16.4	29	59	1.1	84	1.00	1.00	62	0.043	0.28	0.04

• Henley's dam is the Rita 403A cow who is also the mother of Topp's Pioneer bull who has sired a lot of their high sellers. His sire 4030 again is super popular and known for making super udders! 2H lays in his shoulders smoothly and is plenty flexible in his pastern and hind leg structure.



TH 71U 17Y Rita 403A – Dam of Lot 53

Lot 53 – MF 403A Henley 4030 2H ET



ECR Candi 5451 ET – Dam of Lot 54

Lot 54 – MF 5451 Hero 8815 5H ET



MF 5451 HERO 8815 5H ET

44168896 – Calved: 1/4/20 – Tattoo: BE: 5H

CRR 719 CATAPULT 109 (S00)(DLF,HVF,IEF,MSUDF)
 CHEZ/PUGH/HARA LOGIC 8815F ET (DLF,HVF,IEF,MSUDF)
 P43964617 R SWEET RED WINE 039 (DLF,HVF,IEF)

TH 122 7H VICTOR 719T (S00)(DLF,HVF,IEF,MSUDF,MDF)
 CRR 4037 ECLIPSE 808 (DLF,HVF,IEF)
 MSU TCF REVOLUTION 4R (S00)(CMB)(DLF,HVF,IEF)
 R MISS WRANGLER 207 (DLF,HVF,IEF)

UPS SENSATION 2296 ET (DLF,HVF,IEF,MSUDF,MDF)
 ECR CANDI 5451 ET (DLF,HVF,IEF,MSUDF)
 43620794 ECR LADY FLOW 212ET (DLF,HVF,IEF)

CHURCHILL SENSATION 028X (S00)(DLF,HVF,IEF,MSUDF)
 UPS JT MISS NEON 7811 1ET (DLF,HVF,IEF)
 DKF RO CASH FLOW 0245 ET (S00)(DLF,HVF,IEF)
 RV GOLDEN LADY 5064 (DLF,HVF,IEF)

BMSI	322																	
BIIS	386	CE	BW	WW	YW	DMI	SC	SCF	MM	M&G	MCE	MCW	UDDR	TEAT	CW	FAT	REA	MARB
CHBS	106	1.5	3.0	57	89	0.3	1.2	14.5	32	61	2.6	78	1.00	1.10	71	0.023	0.61	0.00

- Hero's sire Logic won last year's Junior National and his dam Candi is also a past Junior National Champ as well as Reserve Grand in Denver for Efflings! This dark red, dehorned herd bull prospect is really cool through his front third, square hiped and dimensional over the top of his skeleton.



CHEZ/PUGH/HARA LOGIC 8815F ET (DLF,HVF,IEF,MSUDF)

P43964617 – Calved: 2/23/18 – Tattoo: LE: 8815F

TH 122 7H VICTOR 719T (S00)(DLF,HVF,IEF,MSUDF,MDF)
 CRR 719 CATAPULT 109 (S00)(DLF,HVF,IEF,MSUDF)
 P43186342 CRR 4037 ECLIPSE 808 (DLF,HVF,IEF)

DRF JWR PRINCE VICTOR 711 (S00)(DLF,HVF,IEF,MSUDF)
 KBCR 19D DOMINETTE 122 (DLF,IEF)
 THM DURANGO 4037 (S00)(DLF,HVF,IEF)
 CRR 420 ECLIPSE 688 (DLF,HVF,IEF)

MSU TCF REVOLUTION 4R (S00)(CMB)(DLF,HVF,IEF)
 R SWEET RED WINE 039 (DLF,HVF,IEF)
 P43011682 R MISS WRANGLER 207 (DLF,HVF,IEF)

FELTONS LEGEND 242 (S00)(HVF)
 MSU TCF RACHAEL ET 54N (DLF,HVF,IEF)
 R WRANGLER 4640 (S00)
 R MISS PAGE 1185

BMSI	351																	
BIIS	418	CE	BW	WW	YW	DMI	SC	SCF	MM	M&G	MCE	MCW	UDDR	TEAT	CW	FAT	REA	MARB
CHBS	102	1.6	3.0	60	97	0.2	1.0	17.0	30	60	-0.2	83	0.90	1.00	65	0.013	0.45	-0.04



CHEZ/Pugh/Hara Logic 8815F ET

NOTES



Ridgeview Farm

Bob and Jami Goble

11554 100th St.

Alto, MI 49302

www.ridgeviewfarm-goble.com

In God We Trust

