



Sunday, October 14

DEFINITELY DIFFERENT 2018

12 p.m. (EST) - 11554 100th St., Alto, MI 49302

Ridgeview Farm
Bob & Jami Goble

**LANDRUM
FAMILY FARMS**

GMF
• grand meadows farm •

mƒ
McDonald Farms



Duke

The Goble family welcomes you to the 2018 edition of Definitely Different.

What a roller coaster year it has been with unpredictable weather, no rain through June and July, to flooding in August and September. I don't think I have ever seen such dramatic weather! We have had a very busy year at this point. Max and Grant are working on and off the farm and football is in full swing for Nolan. Jami and I opened up a meat/grocery store at the farm, and it continues to keep us busier than normal.

We are very pleased with the arrival of a new set of calves by Duke. They are maternally bred, but have the extra shape and style that is demanded in the Hereford breed. We are very excited for the future with "DUKE" in our herd.

Our partners Joan Cutler, Dave and Vicki Rollins, and John and Diane Parks are true testaments to the Hereford breed – great friends is the best way to describe them. We also have a beautiful group from In'tHout Farm and MKS Ranch that we will be parting with. Our partners in the sale Landrum Family Farm, Grand Meadows Farm, and McDonald Farm have used the top bulls of the breed in their operations. They have selected from the top of their programs and are bringing them to you. It is a true pleasure to work with these amazing Hereford breeders that are a big part of our family.

We enjoy this day of Hereford fellowship more than you could ever imagine. Quality people that we call friends, sharing a day with the best breed in the world.

Join us Saturday for Jami and Jane's "cooking and cocktails"

**Regards,
Bob**

Ridgeview Farm

Bob & Jami Goble

11554 100th St.

Alto, MI 49302

616-299-8681

jami@ridgeviewfarm-goble.com



Ridgeview Farm

Bob & Jami Goble

Bob and Jami Goble

11554 100th St.

Alto, MI 49302

616-299-8681

jami@ridgeviewfarm-goble.com

Lots 1-22

LANDRUM FAMILY FARMS

1412 W. 900 S.

Warren, IN 46792

Thatcher 260-917-0177

Joe 260-466-8149

Jane 260-917-0036

Lots 23-32

GMF

• grand meadows farm •

Dave and Jill Bielema Family

greatlakesherefordbeef@gmail.com

grandmeadowsfarm.com

616-292-7474

Lots 33-39

mf McDonald Farm

Scott McDonald

7791 Easter Ave. S.E.

Grand Rapids, MI 49508

616-446-2146

scott@mcdonaldplumbing.com

Lots 40-58A

Sunday, Oct. 14, 2018 • 12 p.m. (EST)

Bob's cell 616-299-8681 • Jami's cell 616-366-6533

GPS Address: 11554 100th St., Alto, MI 49302

Terms and Conditions

Sale Date & Time: Sunday, October 14, 2018, 12 p.m. (EST)

Location: At the farm in Alto, Mich. I-96 west towards Grand Rapids, Exit 52 (Hwy. 50) south to 100th Street, west 1/2 mile on north side.

Sale Day Phone: Any consignor or Sale Staff will be more than happy to assist.

Registration Certificates: It is the buyer's responsibility to provide seller with the correct name, address and breeder number for transfer of animal.

EPDs: EPDs given are the most current at the time of print.

Liability: Each animal will be the buyer's responsibility as soon as it is sold, but will be cared for a reasonable length of time. Normal precautions will be taken for each animal.

Guarantee: The cattle will sell in accordance to the recommended terms and conditions of the American Hereford Association.

Trucking: We will help arrange trucking at the least possible cost to central drop off points. Trucking expense will be pre-paid at time of settlement.

Transfers: Cattle will not be transferred until paid in full.

Health: Proper health papers will be available. Brucellosis Free and Whole Herd TB tested.

AI Certificates: AI certificates will not be provided unless AI bull is owned by the seller.

Insurance: Insurance will be available through Harding and Harding.

Lunch: Lunch will be provided on Sale Day.

Bids: The auctioneer in charge will have final say in regards to all final bids. We hope everyone can attend, but for those who cannot, you may contact any owner or staff. LiveAuctions will be at the sale for live online bidding as well.

Air Travel: Grand Rapids airport is less than 30 minutes from the farm. If you need pick up arrangements, please let Jami know.

Accommodations: Please contact Jami for a reservation. jami@ridgeviewfarm-goble.com, 616-366-6533 cell.

Sale Book Material: Statements made from the auction block precede any written material.

Genetic Defects: All cattle are free of genetic defects recognized by the American Hereford Assn. as of October 14, 2018.

Sale Staff

Cody Lowderman, Auctioneer	309-313-2171
Dale Stith, Auctioneer	918-760-1550
John Meents, AHA/Hereford World	419-306-7480
Monte Lowderman, Lowderman Cattle Co.	309-255-0110
Lou Ellen Harr, J&L Cattle Services	419-685-0549
Gene Steiner, Steiner Auctions	513-616-4086
Cody Crum	217-248-7282

Consignor Contact

Bob Goble	616-299-8681
Jami Goble	616-366-6533
Joe Landrum	260-466-8149
Thatcher Landrum	260-917-0177
Dave Bielema	616-292-7474
Scott McDonald	616-446-2146

Cattle Viewing and Social

3-7 p.m. Saturday, Oct. 13th

Come enjoy Beef with us.

LiveAuctions TV

Live Audio, Live Video and Live Bidding!

available via <http://www.LiveAuctions.tv>

If you cannot attend the sale don't let that stop you.

Internet Bidding – Safe, Easy, Convenient

Bidding with the live auctioneer.

Bidding on the lots of your choice.

If you choose to bid online please visit

<http://www.LiveAuctions.tv>

Online bidders must create an account and request a buyer number prior to sale day.

Bidding at the click of a button.



Lot 1 – Goble CLF Duke of Kent 420F



GOBLE CLF DUKE OF KENT 420F

P43941139 – Calved: April 25, 2018 – Tattoo: LE 320F/RE BJG

NJW 73S M326 TRUST 100W ET (SOD){CHB}{DLF,HVF,IEF}
 RVP 100W DUKE 31D (DLF,HVF,IEF)
 P43769388 SRF AFFECTION 138A

KCF BENNETT 3008 M326 (SOD){DLF,HVF,IEF}
 NJW P606 72N DAYDREAM 73S (DLF,HVF,IEF)
 MSU TCF REVOLUTION 4R (SOD){CHB}{DLF,HVF,IEF}
 BYEVISTA 138 WARDEN 138Y

LAKE 002 KILOWATTS 104S (DLF,HVF,IEF)
 CLF GCC STOCKLING Y212
 P43207542 CLF GCC STOCKLING W402

NS LAKES KILO 002
 TNJ VICK NIKI 9104 9207C
 STAR TRF BATTLE CHIEF 356P (DLF,HVF,IEF)
 NPH 10H MS STOCKLING 31K

- Owned with Cutlers Little Farm and Goble Cattle Co.
- Definitely a sale feature to be slated as lot 1. the first opportunity to grab a hold of the newest sensation at Ridgeview. This young herd sire comes from our most proven cow family. Max's great show heifer by Kilowatts. He's stout, straight in his lines and big time good. These Dukes have the extra muscle and stoutness the breed is demanding. Kilowatts, Trust and Revolution how can it miss!
- Terms to be announced Sale day

BMS	25																	
BIIS	22	CE	BW	WW	YW	DMI	SC	SCF	MM	M&G	MCE	MCW	UDDR	TEAT	CW	FAT	REA	MARB
CHBS	34	-4.9	4.3	65	106	0.5	1.1	15.3	28	60	0.1	127	1.25	1.20	81	-0.005	0.63	0.08



CLF GCC Stockling Y212 – Dam of Lot 1



Lot 2 – Goble Miss Gorgeous 206F



GOBLE MISS GORGEOUS 206F

P43935392 – Calved: Feb. 20, 2018 – Tattoo: LE 206F/RE BJG

NJW 73S M326 TRUST 100W ET (SOD)(CHB)(DLF,HVF,IEF)
 RVP 100W DUKE 31D (DLF,HVF,IEF)
 P43769388 SRF AFFECTION 138A

KCF BENNETT 3008 M326 (SOD)(DLF,HVF,IEF)
 NJW P606 72N DAYDREAM 73S (DLF,HVF,IEF)
 MSU TCF REVOLUTION 4R (SOD)(CHB)(DLF,HVF,IEF)
 BYEVISTA 138 WARDEN 138Y

- Gorgeous has been a farm favorite since she hit the ground. This one will show with the best of them. Her pedigree is balanced for both performance and maternal. She is nicely marked, great angle to her shoulder, soft through the center part of her body and flexible on both ends. The first opportunity to put a stout Duke daughter in your barn.

KJ 2403 RECRUIT 966R (SOD)(DLF,HVF,IEF)
 TRENT-HILL MYRA 1Z
 P43769377 TRENT-HILL WYNIFRED 11W

ALLEDALE ROBIN HOOD (SOD)(DLF,HVF,IEF)
 MARK DOMETTE MR 2403 (POD)
 FORC 29F BOOMER 18L
 EJM MISS PENNY 14P

BMS	27																		
BIIS	22	CE	BW	WW	YW	DMI	SC	SCF	MM	M&G	MCE	MCW	UDDR	TEAT	CW	FAT	REA	MARB	
CHBS	34	-1.9	3.6	56	94	0.2	1.1	16.5	29	57	1.9	109	1.20	1.20	76	-0.005	0.55	0.09	



Trent-Hill MYRA 1Z – Dam of Lot 2



Lot 3 – Goble Parks Miss E 304F



Goble JPF Miss Kilowatts Z208 – Grandam of Lot 3



GOBLE PARKS MISS E 304F

P43909007 – Calved: March 3, 2018 – Tattoo: LE 304F/RE BJG

AH JDH CRACKER JACK 26U ET (DLF,HVF,IEF)
 GOBLE RAISE THEM RIGHT 504B ET (DLF,HVF,IEF)
 P43489020 STAR MKS WESTERN PEACH I33R ET (DLF,HVF,IEF)

NJW 1Y WRANGLER 19D (SDD)(DLF,HVF,IEF)
 CRR D03 VIOLET 349 (DLF,HVF,IEF)
 REMITALL ONLINE 122L (SDD)(CHB)(DLF,HVF,IEF)
 STAR MKS STARLENA SS 165M

GCC JPF LBB ENTICER A117 (DLF,HVF,IEF)
 GOBLE PARKS MISS ENTICE D208
 P43665562 GOBLE JPF MISS KILOWATTS Z208

LAKE 002 KILOWATTS 104S (DLF,HVF,IEF)
 JPF K01 MS EMBRACE U11
 LAKE 002 KILOWATTS 104S (DLF,HVF,IEF)
 JPF K01 MS EMBRACE U11

BMS	19																	
BIIS	17	CE	BW	WW	YW	DMI	SC	SCF	MM	M&G	MCE	MCW	UDDR	TEAT	CW	FAT	REA	MARB
CHBS	30	-2.1	3.7	55	86	0.1	0.8	10.6	18	45	-1.8	88	1.30	1.30	67	0.005	0.44	0.11

- Owned with Parks Farm
- One that is cookie cutter good, style and flash. She is long necked, long hipped with great shape to her rib and has a ton of eye appeal. Rais 'em Right is a herd sire for the Firestein Family in Pennsylvania. Her grandam is one of the most beautiful Kilowatt daughters on the farm, moderate and great udder. This one will show for any junior.



GOBLE SANDIE 307F

P43909181 – Calved: March 7, 2018 – Tattoo: LE 307F/RE BJG

AH JDH CRACKER JACK 26U ET (DLF,HVF,IEF)
 GOBLE RAISE THEM RIGHT 504B ET (DLF,HVF,IEF)
 P43489020 STAR MKS WESTERN PEACH I33R ET (DLF,HVF,IEF)

NJW 1Y WRANGLER 19D (SDD)(DLF,HVF,IEF)
 CRR D03 VIOLET 349 (DLF,HVF,IEF)
 REMITALL ONLINE 122L (SDD)(CHB)(DLF,HVF,IEF)
 STAR MKS STARLENA SS 165M

GCC JPF EXCITER A222 (DLF,HVF,IEF)
 GOBLE SANDY 406C
 P43622285 RM GKT STOCKER 338

LAKE 002 KILOWATTS 104S (DLF,HVF,IEF)
 JPF K01 HONEY U30
 GOBLE KILLIN TIME 209X
 NPH 10H MS STOCKER 11R

BMS	20																	
BIIS	17	CE	BW	WW	YW	DMI	SC	SCF	MM	M&G	MCE	MCW	UDDR	TEAT	CW	FAT	REA	MARB
CHBS	32	-0.7	3.4	49	80	-0.1	0.8	10.3	19	44	0.2	91	1.20	1.20	67	0.005	0.43	0.13

- Sandie, as luck would have it, is the result of a heifer that would have topped the sale a few years back but, due to an injury, we kept her and wow will she raise one. Long fronted, deep made, this heifer will entice anyone looking for a cow after her show career.



Lot 4 – Goble Sandie 307F



Goble Raise Them Right 504B ET – Sire of Lots 3 and 4



Lot 5 – Goble Rollins Pretty Girl 302F

DelHawk Gretchen 56B ET – Dam of Lot 5



GOBLE ROLLINS PRETTY GIRL 302F

P43938772 – Calved: March 1, 2018 – Tattoo: LE 302F/RE BJG

SHF WONDER M326 W18 ET {CHB}{DLF,HVF,IEF}
 NJW 73S W18 HOMETOWN 10Y ET {CHB}{DLF,HVF,IEF}
 P43214853 NJW P606 72N DAYDREAM 73S {DLF,HVF,IEF}

KCF BENNETT 3008 M326 {SOD}{DLF,HVF,IEF}
 SHF GOVERNESS 236G L37 {DLF,HVF,IEF}
 PW VICTOR BOOMER P606 {SOD}{DLF,HVF,IEF}
 NJW 94J DEW 72N {DLF,HVF,IEF}

NJW 98S R117 RIBEYE 88X ET {SOD}{DLF,HVF,IEF}
 DELHAWK GRETCHEN 56B ET
 P43492830 TH 557E 57G BURGUNDY 33N {DLF,HVF,IEF}

SHF RIB EYE M326 R117 {SOD}{DLF,HVF,IEF}
 NJW 9126J DEW DOMINO 98S {SOD}{DLF,HVF,IEF}
 RU 20X BOULDER 57G {SOD}
 MEGS 707B BURGUNDY 557E

BMS	23																	
BIIS	20	CE	BW	WW	YW	DMI	SC	SCF	MM	M&G	MCE	MCW	UDDR	TEAT	CW	FAT	REA	MARB
CHBS	29	2.5	3.3	55	91	0.2	1.0	13.6	33	60	-1.0	86	1.30	1.40	63	0.015	0.4	0.3

- Co-owned with Rollins Herefords, Noblesville, Ind.
- You got to love it when a plan comes together! Daughter of Hometown, granddaughter of 88X and DelHawks donor, Burgundy. Red-eyed and sexy fronted this one is easy to find. She will command attention from all breeds as she walks to the ring. Sound from the ground up with a pedigree to match.



GOBLE ANNIE 401F

P43941135 – Calved: April 1, 2018 – Tattoo: LE 401F/RE BJG

CHURCHILL SENSATION 028X {SOD}{CHB}{DLF,HVF,IEF}
 CHURCHILL HEADS UP 410B ET {DLF,HVF,IEF}
 P43475713 CHURCHILL LADY 002X ET {DLF,HVF,IEF}

UPS DOMINO 3027 {SOD}{DLF,HVF,IEF}
 CHURCHILL LADY 7202T ET {DLF,HVF,IEF}
 GOLDEN OAK OUTCROSS 18U {SOD}{CHB}{DLF,HVF,IEF}
 CHURCHILL LADY 600S ET {DLF,HVF,IEF}

H H PERFECT TIMING 0150 ET {DLF,HVF,IEF}
 CSF AEHI ANNABELLE 3404
 P43406170 GRAND FANTASIA 21Y {DLF,HVF,IEF}

CRR ABOUT TIME 743 {SOD}{DLF,HVF,IEF}
 HH MISS ADVANCE 6041S ET {DLF,HVF,IEF}
 RB 29F BLITZKRIEG 705R
 CSF BR 435 TEVA 306T ET {DLF,HVF,IEF}

BMS	28																	
BIIS	23	CE	BW	WW	YW	DMI	SC	SCF	MM	M&G	MCE	MCW	UDDR	TEAT	CW	FAT	REA	MARB
CHBS	28	7.3	0.8	47	72	-0.2	1.1	19.3	29	52	5.3	65	1.25	1.35	62	0.035	0.39	0.04

- Here's one for a different class, just an April baby with that built in WOW factor. She has the goods, so feminine through her front, clean at her chest with lots of substance of bone and muscle. Don't miss this one! She has the parts to wear leather with the best of them.
- Pasture exposed May 15 to Aug. 15, 2018, to Goble MHP Little Bass 301C.



Lot 6 – Goble Annie 401F

CSF AEHI Annabelle 3404 – Dam of Lot 6



Lot 7 – GWF Holly 6103



Grassy Run Deanna 1013 – Dam of Lot 7

LOT 7
Cow

GWF HOLLY 6103

P43700112 – Calved: Jan. 6, 2016 – Tattoo: RE 6103

BR CSF COPPER ET (DLF,HYF,IEF)
BR COPPER 2083 (DLF,HYF,IEF)
43349953 BR HOLLY 9061 ET (DLF,HYF,IEF)

DM BR SOONER (CHB)(DLF,HYF,IEF)
BR GABRIELLE 5082 (DLF,HYF,IEF)
K 64H RIBSTONE LAD 157K (SOD)(CHB)(DLF,HYF,IEF)
BR HOLLY 6080 ET (DLF,IEF)

MSU TCF REVOLUTION 4R (SOD)(CHB)(DLF,HYF,IEF)
GRASSY RUN DEANNA 1013
P43171775 GRF DEANNA 9105

FELTONS LEGEND 242 (SOD)(HYF)
MSU TCF RACHAEL ET 54N (DLF,HYF,IEF)
MOHICAN VIC 102L
PF 75A DEANNA 456

BMSI	26																	
BIIS	22	CE	BW	WW	YW	DMI	SC	SCF	MM	M&G	MCE	MCW	UDDR	TEAT	CW	FAT	REA	MARB
CHBS	32	2.6	2.3	57	92	0.4	0.9	16.6	21	49	1.1	92	1.10	1.10	74	0.015	0.6	0.17

- Easy keeping Copper daughter out of a beautiful Revolution daughter purchased by Wiswell' a few years back. She will stand the test of time
- Pasture exposed May 20, 2018 to Oct 14, 2018, to Goble MHP Little Bass 301C.

LOT 7A
Cow

GOBLE MISS HOLLY 504F

P43939953 – Calved: May 16, 2018 – Tattoo: LE 504F/RE BJG

GCC JPF LBB ENTICER A117 (DLF,HYF,IEF)
GOBLE MHP LITTLE BASS 301C (DLF,HYF,IEF)
P43605065 MHPH 521X DAINTY 105A

LAKE 002 KILOWATTS 104S (DLF,HYF,IEF)
JPF K01 MS EMBRACE J11
TH 122 711 VICTOR 521X ET (DLF,HYF,IEF)
MHPH MS 101S DAINTY 123U

BR COPPER 2083 (DLF,HYF,IEF)
GWF HOLLY 6103
P43700112 GRASSY RUN DEANNA 1013

BR CSF COPPER ET (DLF,HYF,IEF)
BR HOLLY 9061 ET (DLF,HYF,IEF)
MSU TCF REVOLUTION 4R (SOD)(CHB)(DLF,HYF,IEF)
GRF DEANNA 9105

BMSI	24																	
BIIS	21	CE	BW	WW	YW	DMI	SC	SCF	MM	M&G	MCE	MCW	UDDR	TEAT	CW	FAT	REA	MARB
CHBS	31	0.6	3.4	64	98	0.6	0.9	15.4	21	54	0.0	96	1.25	1.20	76	-0.005	0.61	0.08

- A youngster that breaks into a different class. Just a May, nicely balanced, don't miss her.



Lot 8 – CLF GCC Gayle C403



Lot 8A – Goble Miss G 319F

LOT 8
Cow

CLF GCC GAYLE C403

P43605076 – Calved: April 1, 2015 – Tattoo: LE C403/RE CLF

STAR BRIGHT FUTURE 533P ET (SOD)(DLF,HYF,IEF)
STAR BRITE EXPECTATIONS 33Y ET (DLF,HYF,IEF)
P43167492 STAR MISS AMERICA 12P (DLF,HYF,IEF)

REMITALL ONLINE 122L (SOD)(CHB)(DLF,HYF,IEF)
RB L1 DOMINETTE 8116 (DLF,HYF,IEF)
STAR AMERICA BNMPH SS MKS 68M (DLF,HYF,IEF)
HAROLDSON'S 42H GEM 24K

NJW 1Y WRANGLER 19D (SOD)(DLF,HYF,IEF)
STAR 19D GAYLE 39N
P42357718 PCR BOOMER GAYLE 157L

CIRCLE-D WRANGLER 832W (SOD)(CHB)(HYF)
NJW FROSTY 1Y
CS BOOMER 29F (SOD)(CHB)(DLF,HYF,IEF)
PCR VICI GAYLE 704G (SOD)

BMSI	17																	
BIIS	14	CE	BW	WW	YW	DMI	SC	SCF	MM	M&G	MCE	MCW	UDDR	TEAT	CW	FAT	REA	MARB
CHBS	28	-3.9	3.8	41	75	-0.5	0.5	9.1	19	39	2.4	81	1.10	1.10	50	-0.005	0.16	0.02

- This young cow is a producer and time tested breeding. Brite Expectation makes beautiful cows and with 19D in there as well. Wait till her Duke calf shows up next spring!
- AI serviced May 12, 2018, to RVP 100W Duke 31D, then pasture exposed May 15 to Aug. 15, 2018, to Goble MHP Little Bass 301C.

LOT 8A
Cow

GOBLE MISS G 319F

P43941144 – Calved: March 20, 2018 – Tattoo: LE 319F/RE BJG

GCC JPF LBB ENTICER A117 (DLF,HYF,IEF)
GOBLE MHP LITTLE BASS 301C (DLF,HYF,IEF)
P43605065 MHPH 521X DAINTY 105A

LAKE 002 KILOWATTS 104S (DLF,HYF,IEF)
JPF K01 MS EMBRACE J11
TH 122 711 VICTOR 521X ET (DLF,HYF,IEF)
MHPH MS 101S DAINTY 123U

STAR BRITE EXPECTATIONS 33Y ET (DLF,HYF,IEF)
CLF GCC GAYLE C403
P43605076 STAR 19D GAYLE 39N

STAR BRIGHT FUTURE 533P ET (SOD)(DLF,HYF,IEF)
STAR MISS AMERICA 12P (DLF,HYF,IEF)
NJW 1Y WRANGLER 19D (SOD)(DLF,HYF,IEF)
PCR BOOMER GAYLE 157L

BMSI	20																	
BIIS	17	CE	BW	WW	YW	DMI	SC	SCF	MM	M&G	MCE	MCW	UDDR	TEAT	CW	FAT	REA	MARB
CHBS	29	-2.7	4.1	56	90	0.2	0.7	11.6	20	48	0.7	91	1.25	1.20	64	-0.015	0.39	0.01

- Cosmetics, eye appeal, long fronted and style. This one will have a future. Little Bass daughters are bred maternal with a fancy look.



Lot 9 – Goble Hometrust 303F



Goble Miss Trust 301B – Dam of Lot 9



GOBLE HOMETRUST 303F

P43908998 – Calved: March 2, 2018 – Tattoo: LE 303F/RE BJG

NJW 73S W18 HOMETOWN 10Y ET {CHB}{DLF,HYF,IEF} SHF WONDER M326 W18 ET {CHB}{DLF,HYF,IEF}
 NJW 135U 10Y HOMETOWN 27A {DLF,HYF,IEF} NJW P606 72N DAYDREAM 73S {DLF,HYF,IEF}
 P43385145 NJW 4037 34S DURANGO VACA 135U {DOD}{DLF,HYF,IEF} THM DURANGO 4037 {SOD}{DLF,HYF,IEF}
 NJW P606 80L DAYDREAM 34S ET {DLF,HYF,IEF}

NJW 73S M326 TRUST 100W ET {SOD}{CHB}{DLF,HYF,IEF} KCF BENNETT 3008 M326 {SOD}{DLF,HYF,IEF}
 GOBLE MISS TRUST 301B NJW P606 72N DAYDREAM 73S {DLF,HYF,IEF}
 P43468522 LCC 7067 LULLABY 139 JJD LCC LIMIT UP 7067
 LCC 413 DREAM GIRL 6131 {DLF,HYF,IEF}

BMSI	29	BIIS	25	CE	BW	WW	YW	DMI	SC	SCF	MM	M&G	MCE	MCW	UDDR	TEAT	CW	FAT	REA	MARB
CHBS	33	1.0	3.6	64	106	0.5	1.2	19	33	65	2.8	121	1.40	1.40	77	0.005	0.67	0.17		

- Owned with Rollins Herefords, Noblesville, Ind.
- Hometown 27A, one of the most talked about sires in the Hereford breed.
- This is the only chance to get one. This bull didn't want his picture taken. You won't recognize him in real life! Solid made and sound at the ground. His dam is surely a favorite around here, a front pasture cow. Imagine having a herd full of cows that look like her!



GOBLE LEADING THE WAY 201F

P43908977 – Calved: Feb. 7, 2018 – Tattoo: LE 201F/RE BJG

HYALITE ON TARGET 936 {CHB}{DLF,HYF,IEF} SCHU-LAR ON TARGET 22S {SOD}{CHB}{DLF,HYF,IEF}
 R LEADER 6964 {CHB}{DLF,HYF,IEF} R MISS REVOLUTION 1009 {DOD}{DLF,HYF,IEF}
 P43500058 R MISS REVOLUTION 1009 {DOD}{DLF,HYF,IEF} MSU TCF REVOLUTION 4R {SOD}{CHB}{DLF,HYF,IEF}
 R MISS WRANGLER 3007

LAKE 002 KILOWATTS 104S {DLF,HYF,IEF} NS LAKES KILO 002
 CLF GCC LADY K D215 TNJ VICK NIKI 9104 9207C
 P43665564 GOBLE WESTERN LIGHT PW VICTOR BOOMER P606 {SOD}{DLF,HYF,IEF}
 STAR MKS WESTERN PEACH 133R ET {DLF,HYF,IEF}

BMSI	27	BIIS	23	CE	BW	WW	YW	DMI	SC	SCF	MM	M&G	MCE	MCW	UDDR	TEAT	CW	FAT	REA	MARB
CHBS	32	3.3	2.7	63	98	0.3	1.3	17.8	26	57	3.8	83	1.30	1.30	77	0.035	0.47	0.09		

- Birth weight problem? Here is the fix, son of Leader, this bull is out of a beautiful moderate framed cow. Kilowatts daughter that goes back to Western Peach. He should make beautiful uddered females, and you can rest assured they will come easy.



Lot 10 – Goble Leading The Way 201F



STAR MKS Western Peach 133R ET – Great-grandam of Lot 10



Lot 11 – WLL Dazzle 21D



WLL DAZZLE 21D

P43749603 – Calved: Jan. 16, 2016 – Tattoo: RE WLL21D

SHF RIB EYE M326 R117 {SOD}{DLF,HVF,IEF} KCF BENNETT 3008 M326 {SOD}{DLF,HVF,IEF}
 AXA GOLDEN-OAK XCEED ET 704X {DLF,HVF,IEF} HVH MISS HUDSON 83K 8M
 P43444741 NCX MISS JR NELLIE 528N {DLF,HVF,IEF} NCX 23C JUPITER 16J
 MFR LASS 113H

NJW 8E 120J EMBASSY 81S ET {SOD}{DLF,HVF,IEF} REMITALL EMBRACER 8E {SOD}{CHB}{HYF}
 WLL SPICE GIRL 24X SADDLE VLY LADYSPORT 120
 P43749600 OSF ROMANCE 19M 213R BLAIR-ATHOL 20 THE ROCK ET 19M
 GHC MISS CARLSON 12M

BMS	26																	
BIIS	22	CE	BW	WW	YW	DMI	SC	SCF	MM	M&G	MCE	MCW	UDDR	TEAT	CW	FAT	REA	MARB
CHBS	33	-2.8	7.0	59	93	0.2	1.1	16.8	22	52	-0.6	105	1.20	1.10	72	-0.045	0.52	-0.03

- Our pick from Whiskey Lane, short teat, nice uddered daughter of Exceed bred to breed Leader 2296, what could this lead to?
- AI serviced May 12, 2018, to UPS Sensation 2296, then pasture exposed May 15 to Aug. 15, 2018, to Goble MHPH Little Bass 301C.



Lot 12 – Goble Lookin Good Girl 405D ET



GOBLE LOOKIN GOOD GIRL 405D ET

P43743649 – Calved: April 10, 2016 – Tattoo: LE 405D/RE BJG

REMITALL ONLINE 122L {SOD}{CHB}{DLF,HVF,IEF} REMITALL EMBRACER 8E {SOD}{CHB}{HYF}
 SB 122L GIT-R-DONE 19R ET {CHB}{DLF,HVF,IEF} REMITALL CATALINA 24H
 P42596678 RU 20X ERIN 54E REMITALL KEYNOTE 20X {SOD}{CHB}
 RU 15W SUSAN 54Z

MSU STAR HEADLINER {SOD}{DLF,HVC,IEF} FELTONS 517 {SOD}{HYF}
 DALRIADA 4WF 10H LISA ET 116L WNH MS OPTIMA 9401
 P42211289 STAR SPIRIDG JESSIE 382H BIGT SPH 75A TOPLINE E81
 STAR KITSIE MCS JR 126E

BMS	16																	
BIIS	14	CE	BW	WW	YW	DMI	SC	SCF	MM	M&G	MCE	MCW	UDDR	TEAT	CW	FAT	REA	MARB
CHBS	30	-0.9	4.2	53	92	0.1	0.9	7.6	20	46	3.3	109	1.10	1.10	61	-0.005	0.39	0.03

- Here is a full sister to Coyote Done, the cow that has made a name for herself at Grimmel Girls in Maryland, we showed her last year and didn't get her bred on time. Easy on the eyes all the shape to and style to be just like her big sister.
- Pasture exposed from Aug. 1, 2018 to Oct 14, 2018, to Goble MHPH Little Bass 301C.



GOBLE LIL BIT OF DAZZLE 321F

P43938540 – Calved: March 24, 2018 – Tattoo: LE 321F/RE BJK

GCC JPF LBB ENTICER A117 {DLF,HVF,IEF} LAKE 002 KILOWATTS 104S {DLF,HVF,IEF}
 GOBLE MHPH LITTLE BASS 301C {DLF,HVF,IEF} JPF K01 MS EMBRACE U11
 P43605065 MHPH 521X DAINTY 105A TH 122 711 VICTOR 521X ET {DLF,HVF,IEF}
 MHPH MS 101S DAINTY 123U

AXA GOLDEN-OAK XCEED ET 704X {DLF,HVF,IEF} SHF RIB EYE M326 R117 {SOD}{DLF,HVF,IEF}
 WLL DAZZLE 21D NCX MISS JR NELLIE 528N {DLF,HVF,IEF}
 P43749603 WLL SPICE GIRL 24X NJW 8E 120J EMBASSY 81S ET {SOD}{DLF,HVF,IEF}
 OSF ROMANCE 19M 213R

BMS	24																	
BIIS	21	CE	BW	WW	YW	DMI	SC	SCF	MM	M&G	MCE	MCW	UDDR	TEAT	CW	FAT	REA	MARB
CHBS	31	-1.3	4.9	63	95	0.5	1.0	15.4	22	54	-0.5	103	1.30	1.20	75	-0.035	0.57	0.00

- Good looking one here. Little Bass will sire good females with big futures.



SHF Coyotte Done – Dam is a full sister to Lot 12



GOBLE LATE LADY 795F

P43938551 – Calved: July 10, 2018 – Tattoo: LE 795F/RE BJG

GCC JPF LBB ENTICER A117 {DLF,HVF,IEF} LAKE 002 KILOWATTS 104S {DLF,HVF,IEF}
 GOBLE MHPH LITTLE BASS 301C {DLF,HVF,IEF} JPF K01 MS EMBRACE U11
 P43605065 MHPH 521X DAINTY 105A TH 122 711 VICTOR 521X ET {DLF,HVF,IEF}
 MHPH MS 101S DAINTY 123U

SB 122L GIT-R-DONE 19R ET {CHB}{DLF,HVF,IEF} REMITALL ONLINE 122L {SOD}{CHB}{DLF,HVF,IEF}
 GOBLE LOOKIN GOOD GIRL 405D ET RU 20X ERIN 54E
 P43743649 DALRIADA 4WF 10H LISA ET 116L MSU STAR HEADLINER {SOD}{DLF,HVC,IEF}
 STAR SPIRIDG JESSIE 382H

BMS	19																	
BIIS	17	CE	BW	WW	YW	DMI	SC	SCF	MM	M&G	MCE	MCW	UDDR	TEAT	CW	FAT	REA	MARB
CHBS	30	-1.1	4.2	62	98	0.4	0.9	10.9	21	52	1.2	105	1.20	1.20	69	-0.015	0.5	0.01

- Sweet young July calf, sells as a pair with her Lookin Good Girl Dam



Lot 13 – SSF 901 Shes Got Game 265

LOT 13
Cow

SSF 901 SHES GOT GAME 265

P43684055 – Calved: Jan. 5, 2016 – Tattoo: LE J265

KJ HVH 33N REDEEM 485T ET (SOD){DLF,HYF,IEF} SHF RADAR M326 R125 (SOD){DLF,HYF,IEF}
 H BK CCC SR GAME CHANGER ET (CHB){DLF,HYF,IEF} HVH OKSANA 4L 33N (DLF,HYF,IEF)
 P43296077 NJW 78P 63N LADYSPORT 51W ET (DLF,HYF,IEF) TH JWR SDP 16G 57G TUNDRA 63N (SOD){DLF,HYF,IEF}
 NJW BW LADYSPORT DEW 78P ET (DLF,HYF,IEF)

PW MOHICAN NASDAQ P316 (SOD){DLF,HYF,IEF} REMITALL BOOMER 46B (SOD){CHB}{DLF,HYF,IEF}
 MC VICTORIA 316P W901 ET (DLF,HYF,IEF) PW VICTORIA 964 8114 (DLF,HYF,IEF)
 P43005464 ASH LIL PEANUT 203P (DLF,HYF,IEF) MOHICAN MINT 19M (DLF,HYF,IEF)
 ASH MELODY 211M (DLF,HYF,IEF)

BMSI	28																	
BIIS	23	CE	BW	WW	YW	DMI	SC	SCF	MM	M&G	MCE	MCW	UDDR	TEAT	CW	FAT	REA	MARB
CHBS	33	-5.7	5.8	60	95	0.1	0.8	17.5	22	52	-2.0	122	1.30	1.30	73	0.005	0.67	0.05

- This young cow will raise one with the best of them. She has a great udder, and bred to 2296. The possibilities are endless.
- AI serviced April 24, 2018, to UPS Sensation 2296, then pasture exposed May 15 to Aug. 15, 2018, to Goble MHPH Little Bass 301C.



Lot 14 – SSF 02A Lady Exciter 283

LOT 14
Cow

SSF 02A LADY EXCITER 283

P43683986 – Calved: April 9, 2016 – Tattoo: LE J283

LAKE 002 KILOWATTS 104S (DLF,HYF,IEF) NS LAKES KILO 002
 GCC JPF EXCITER A222 (DLF,HYF,IEF) TNJ VICK NIKI 9104 9207C
 P43357626 JPF K01 HONEY U30

NJW 73S M326 TRUST 100W ET (SOD){CHB}{DLF,HYF,IEF} KCF BENNETT 3008 M326 (SOD){DLF,HYF,IEF}
 LBB TYRA 02A NJW P606 72N DAYDREAM 73S (DLF,HYF,IEF)
 P43395353 LCC P611 VICKY 8176 RMP MOHLER 611
 LCC MISS VICKY 447

BMSI	25																	
BIIS	21	CE	BW	WW	YW	DMI	SC	SCF	MM	M&G	MCE	MCW	UDDR	TEAT	CW	FAT	REA	MARB
CHBS	34	-2.3	4.5	57	94	0.3	0.9	14.8	24	53	1.7	109	1.20	1.20	74	-0.035	0.56	0.07

- Good looking Exciter daughter out of a Trust cow. Jeff and Cecil Jordan's pick of our offering a few years back, young and productive.
- AI serviced May 12, 2018, to Churchill Kickstart 501C ET, then pasture exposed May 15 to Aug. 15, 2018, to Goble MHPH Little Bass 301C.
- Lot 14A: Steer 315F – 43941175 – Calved: March 17, 2018 – Tattoo: 315F



Lot 13A – Goble Game On 204F

LOT 13A
Bull

GOBLE GAME ON 204F

P43908968 – Calved: Feb. 9, 2018 – Tattoo: LE 204F/RE BJG

NS LAKES KILO 002 JSF 37 271 DEVO 23C (SOD)
 LAKE 002 KILOWATTS 104S (DLF,HYF,IEF) GK APOLLONIA 834Z
 P42698463 TNJ VICK NIKI 9104 9207C PW NICK 9104 (SOD)
 TNJ DETERMINATE 15G 17F

H BK CCC SR GAME CHANGER ET (CHB){DLF,HYF,IEF} KJ HVH 33N REDEEM 485T ET (SOD){DLF,HYF,IEF}
 SSF 901 SHES GOT GAME 265 NJW 78P 63N LADYSPORT 51W ET (DLF,HYF,IEF)
 P43684055 MC VICTORIA 316P W901 ET (DLF,HYF,IEF) PW MOHICAN NASDAQ P316 (SOD){DLF,HYF,IEF}
 ASH LIL PEANUT 203P (DLF,HYF,IEF)

BMSI	23																	
BIIS	19	CE	BW	WW	YW	DMI	SC	SCF	MM	M&G	MCE	MCW	UDDR	TEAT	CW	FAT	REA	MARB
CHBS	29	-4.2	4.1	61	91	0.4	0.8	14.3	20	51	-5.4	104	1.30	1.20	69	-0.015	0.5	-0.02

- The only son of Kilowatts to sell, and out of a good cow. We are going back to using him again because of his consistency. This one will definitely strengthen any ones bull battery.



Lot 15 – SSF 9550 Ms Revolution 280

LOT 15
Cow

SSF 9550 MS REVOLUTION 280

P43684048 – Calved: March 5, 2016 – Tattoo: LE J280

FELTONS LEGEND 242 (SOD){HYF} FELTONS DOMINO 774 (SOD){DLF,HYF,IEF}
 MSU TCF REVOLUTION 4R (SOD){CHB}{DLF,HYF,IEF} FELTONS G15
 P42593689 MSU TCF RACHAEL ET 54N (DLF,HYF,IEF) REMITALL ONLINE 122L (SOD){CHB}{DLF,HYF,IEF}
 HH MISS ADV 786G 1ET

REMITALL BOOMER 46B (SOD){CHB}{DLF,HYF,IEF} REMITALL KEYNOTE 20X (SOD){CHB}
 THM 46B ROSSIE 9550 ET RMTLL SALLYS LASS 120X
 P42976453 BTCC 5015 0614 BTF GRAZER 540 5015
 TR LADY PLATO F30

BMSI	29																	
BIIS	25	CE	BW	WW	YW	DMI	SC	SCF	MM	M&G	MCE	MCW	UDDR	TEAT	CW	FAT	REA	MARB
CHBS	33	2.7	3.4	58	92	0.3	0.9	19	20	49	2.5	102	1.10	1.10	78	0.045	0.71	0.21

- Revolution 4R, Boomer 46B, maternal excellence at its best.
- AI serviced May 13, 2018, to Churchill Kickstart 501C ET, then pasture exposed May 15 to Aug. 15, 2018, to Goble MHPH Little Bass 301C.
- Lot 15A: Steer 301F – P43908979 – Calved: March 1, 2018 – Tattoo: LE 301F/RE BJG



Lot 16 – BPH 714 Right Serenade 066X

LOT 16
Cow

BPH 714 RIGHT SERENADE 066X

P43084402 – Calved: March 12, 2010 – Tattoo: BE 066X

NS LAKES KILO 002
RB 29F 002 RIGHT NOW 630S
P42701674 PSB LADY BOOMER KLONDIKE 340N

JSF 37 271 DEVO 23C {SOD}
GK APOLLONIA 834Z
CS BOOMER 29F {SOD}{CHB}{DLF,HYF,IEF}
KFF TARZAN'S PRIDE 954

MBPH 122L KLONDIKE PRINCE 503R
BPH PRINCESS STARDUST 714T
P42805571 PSB VANS NICKI SUNSHINE 462P

REMITALL ONLINE 122L {SOD}{CHB}{DLF,HYF,IEF}
KFF KLONDIKE MAGGIE 276F {DOD}
MBPH DECATHLETE VAN 951
PSB NICK B SARAH 391C {DOD}

BMSI	16	BIIS	14	CE	BW	WW	YW	DMI	SC	SCF	MM	M&G	MCE	MCW	UDDR	TEAT	CW	FAT	REA	MARB
CHBS	27	-2.5	4.2	51	77	-0.1	0.5	8.5	17	42	1.4	99	1.20	1.10	58	-0.015	0.2	-0.07		

- A little more experience than other cows in the sale. Good uddered Right Now daughter that has longevity built in.
- AI serviced June 26, 2018, to RVP 100W Duke 31D.



Lot 17 – Grand Mathilda D12

LOT 17
Cow

GRAND MATHILDA D12 {DLF,HYF,IEF}

P43673067 – Calved: March 16, 2016 – Tattoo: BE D12

LAKE 002 KILOWATTS 104S {DLF,HYF,IEF}
GCC JPF EXCITER A222 {DLF,HYF,IEF}
P43357626 JPF K01 HONEY U30

NS LAKES KILO 002
TNJ VICK NIKI 9104 9207C
STAR TRF 8006 EMBRACER 229 ET
JPF 315 DREAM K01

GOBLE KILLIN TIME 209X
RM GKT STOCKER 338
P43419117 NPH 10H MS STOCKER 11R

LAKE 002 KILOWATTS 104S {DLF,HYF,IEF}
STAR NK BRITTANY 18U ET
NPH 512 THE STOCKER 10H {SOD}
BP MS PRINGLE 11M

BMSI	20	BIIS	17	CE	BW	WW	YW	DMI	SC	SCF	MM	M&G	MCE	MCW	UDDR	TEAT	CW	FAT	REA	MARB
CHBS	33	-2.8	5.2	57	89	0.2	0.8	11	16	45	-2.1	105	1.10	1.10	76	-0.015	0.57	-0.04		

- This daughter of Exciter will catch your eye. We are only selling one steer this year and he might be the one!
- Pasture exposed May 15 to Aug. 15, 2018, to Goble MHPH Little Bass 301C.
- Lot 17A: BJG205F Steer – Unregistered – Calved: Feb. 19, 2018 – Tattoo: RE BJG/LE 205F

LOT 16A
Cow

IN'T HOUT GOBLE RAINY 501F

P43945871 – Calved: May 11, 2018 – Tattoo: LE 501F

AH JDH CRACKER JACK 26U ET {DLF,HYF,IEF}
GOBLE RAISE THEM RIGHT 504B ET {DLF,HYF,IEF}
P43489020 STAR MKS WESTERN PEACH 133R ET {DLF,HYF,IEF}

NJW 1Y WRANGLER 19D {SOD}{DLF,HYF,IEF}
CRR D03 VIOLET 349 {DLF,HYF,IEF}
REMITALL ONLINE 122L {SOD}{CHB}{DLF,HYF,IEF}
STAR MKS STARLENA SS 165M

RB 29F 002 RIGHT NOW 630S
BPH 714 RIGHT SERENADE 066X
P43084402 BPH PRINCESS STARDUST 714T

NS LAKES KILO 002
PSB LADY BOOMER KLONDIKE 340N
MBPH 122L KLONDIKE PRINCE 503R
PSB VANS NICKI SUNSHINE 462P

BMSI	18	BIIS	26	CE	BW	WW	YW	DMI	SC	SCF	MM	M&G	MCE	MCW	UDDR	TEAT	CW	FAT	REA	MARB
CHBS	29	-1.6	3.7	52	82	0.0	0.7	9.3	19	45	1.2	98	1.20	1.15	64	0.009	0.33	0.09		

- Fancy heifer that is a different class, juniors don't miss this one!



Lot 18 – Elm-Lodge Darling 35D

LOT 18
Cow

ELM-LODGE DARLING 35D

P43776234 – Calved: March 3, 2016 – Tattoo: RE TAX 35D

MSU TCF REVOLUTION 4R {SOD}{CHB}{DLF,HYF,IEF}
KJ 968R POLLED SOLUTION 668ZET {DLF,HYF,IEF}
P43312274 KJ 2403 ROBINETTE 968R {DLF,HYF,IEF}

FELTONS LEGEND 242 {SOD}{HYF}
MSU TCF RACHAEL ET 54N {DLF,HYF,IEF}
ALLENDALE ROBIN HOOD {SOD}{DLF,HYF,IEF}
MARK DOMETTE MR 2403 {DOD}

SHF RIB EYE M326 R117 {SOD}{DLF,HYF,IEF}
ELM-LODGE 2T WINE'N DINE 6W
P43776200 ELM-LODGE 11D TRACY 2T

KCF BENNETT 3008 M326 {SOD}{DLF,HYF,IEF}
HVH MISS HUDSON 83K 8M
FHF 8403 STARBUCK 19H {SOD}
DALMYST GOLDEN ASPEN 11D

BMSI	28	BIIS	23	CE	BW	WW	YW	DMI	SC	SCF	MM	M&G	MCE	MCW	UDDR	TEAT	CW	FAT	REA	MARB
CHBS	28	3.8	1.5	55	82	0.3	0.9	19.2	22	50	2.4	92	1.40	1.30	64	-0.005	0.4	0.11		

- Good uddered Soluton daughter from Elm Lodge. Productive with a sound udder.
- AI serviced May 12, 2018, to RVP 100W Duke 31D, then pasture exposed May 15 to Aug. 15, 2018, to Goble MHPH Little Bass 301C.
- Lot 18A: 316F Steer – 43941176 – Calved: March 18, 2018 – Tattoo: 316F

CHOICE — 19A OR 19B



IN'THOUT ALLIE 301F

P43942249 — Calved: March 1, 2018 — Tattoo: LE 301F

NJW 73S M326 TRUST 100W ET {SOD}{CHB}{DLF,HVF,IEF}
RVP 100W DUKE 31D {DLF,HVF,IEF}
P43769388 SRF AFFECTION 138A

KCF BENNETT 3008 M326 {SOD}{DLF,HVF,IEF}
NJW P606 72N DAYDREAM 73S {DLF,HVF,IEF}
MSU TCF REVOLUTION 4R {SOD}{CHB}{DLF,HVF,IEF}
BYEVISTA 138 WARDEN 138Y

CRR ABOUT TIME 743 {SOD}{DLF,HVF,IEF}
BK ALMOND JOY 353
P43425044 BK XTRA FANCY MAID 0085 {DLF,HVF,IEF}

THM DURANGO 4037 {SOD}{DLF,HVF,IEF}
CRR D03 CASSIE 206 {DLF,HVF,IEF}
STAR MKS WESTERN WRANGLER SS {DLF,HVF,IEF}
STAR FANCY MAID 185R ET {DLF,HVF,IEF}

BMSI	414																	
BIIS	485	CE	BW	WW	YW	DMI	SC	SCF	MM	M&G	MCE	MCW	UDDR	TEAT	CW	FAT	REA	MARB
CHBS	122	-0.7	2.2	53	87	0.0	0.9	19.0	25	52	2.9	131	1.10	1.00	74	-0.015	0.61	0.13

- This heifer is sure show worthy, nice fronted, neck comes out of the top side of her shoulder. Her dam was the pick of the Buck sale a few years back. This Duke daughter has a big future in and out of the show ring.
- Co-owned with In'tHout Farm



BK Almond Joy 353 — Dam of Lot 19A



IN'THOUT OLIVIA 304F

P43945866 — Calved: March 14, 2018 — Tattoo: LE 304F

AH JDH CRACKER JACK 26U ET {DLF,HVF,IEF}
GOBLE RAISE THEM RIGHT 504B ET {DLF,HVF,IEF}
P43489020 STAR MKS WESTERN PEACH 133R ET {DLF,HVF,IEF}

NJW 1Y WRANGLER 19D {SOD}{DLF,HVF,IEF}
CRR D03 VIOLET 349 {DLF,HVF,IEF}
REMITALL ONLINE 122L {SOD}{CHB}{DLF,HVF,IEF}
STAR MKS STARLENA SS 165M

NJW 73S W18 HOMETOWN 10Y ET {CHB}{DLF,HVF,IEF}
KH 10Y ONA B7
P43501648 BECKLEY 934S LADY 0013 {DOD}

SHF WONDER M326 W18 ET {CHB}{DLF,HVF,IEF}
NJW P606 72N DAYDREAM 73S {DLF,HVF,IEF}
BECKLEY 758P ONTIME 934S {SOD}{DLF,HVF,IEF}
TF PW LADY 528

BMSI	323																	
BIIS	402	CE	BW	WW	YW	DMI	SC	SCF	MM	M&G	MCE	MCW	UDDR	TEAT	CW	FAT	REA	MARB
CHBS	107	-2.7	4.1	56	94	0.3	0.9	13.7	26	54	-3.1	106	1.25	1.25	69	0.030	0.51	0.23

- This daughter of Raise Right has a big future. Her dam is one of the most milky cows to ever walk at Ridgeview. She is very clean in her lines with a pedigree stacked for maternal longevity.
- Co-owned with In'tHout Farm



KH 10Y Ona B7 — Dam of Lot 19B



MKS 719T FOXY LADY 52E ET

P43895573 — Calved: Oct. 13, 2017 — Tattoo: LE 52E/RE MKS

DRF JWR PRINCE VICTOR 71I {SOD}
TH 122 71I VICTOR 719T {SOD}{CHB}{DLF,HVF,IEF}
P42800895 KBCR 19D DOMINETTE 122 {DLF,IEF}

HRP THM VICTOR 109W 9329 {SOD}
RHF 964 VICTRA 4057
NJW 1Y WRANGLER 19D {SOD}{DLF,HVF,IEF}
KBCR DOMINETTE 9112

REMITALL ROUTE 66 ET 346R
KCL 346R FOXY LADY 1N 91U ET {DLF,HVF,IEF}
P42964085 DAN 3008 FOXY GAL 2E 1N {DLF,HVF,IEF}

MC RANGER 9615 {SOD}{CHB}{DLF,HVF,IEF}
REMITALL CATALINA 24H
RRH MR FELT 3008 {SOD}{DLF,HVF,IEF}
CPH TC OPTINA 2E

BMSI	29																	
BIIS	24	CE	BW	WW	YW	DMI	SC	SCF	MM	M&G	MCE	MCW	UDDR	TEAT	CW	FAT	REA	MARB
CHBS	30	4.1	1.8	57	86	0.0	1.0	19.4	23	52	-1.3	84	1.20	1.20	63	-0.025	0.41	0.11

- She is sired by the maternal giant 719T. Her grandam is Foxy Gal, the top donor at Star Lake who left her mark across the country.
- Sells open
- Co-owned with MKS Ranch, Skiatook, Okla.



Lot 20 — MKS 719T Foxy Lady 52E ET

Ridgeview Farm • 11554 100th St. • Alto MI 49302 • Bob's cell: 616-299-8681 • jami@ridgeviewfarm-goble.com



Lot 21A – MKS 6964 4D Leading Lady 6F

LOT 21A Cow

MKS 6964 4D LEADING LADY 6F

P43930847 – Calved: Feb. 11, 2018 – Tattoo: LE 6F/RE MKS

HYALITE ON TARGET 936 {CHB}{DLF,HVF,IEF} SCHU-LAR ON TARGET 22S {SOD}{CHB}{DLF,HVF,IEF}
 R LEADER 6964 {CHB}{DLF,HVF,IEF} HYALITE TS LASS 310 {DLF,HVF,IEF}
 P43500058 R MISS REVOLUTION 1009 {DOD}{DLF,HVF,IEF} MSU TCF REVOLUTION 4R {SOD}{CHB}{DLF,HVF,IEF}
 R MISS WRANGLER 3007

CRR 719 CATAPULT 109 {DLF,HVF,IEF} TH 122 711 VICTOR 719T {SOD}{CHB}{DLF,HVF,IEF}
 MKS 109 221 MERRY GOLD 4D CRR 4037 ECLIPSE 808 {DLF,HVF,IEF}
 P43709577 RJL LCC JUST BEING MERRY 221 MSU TCF REVOLUTION 4R {SOD}{CHB}{DLF,HVF,IEF}
 LCC 414R BE MERRY 9195 {DLF,HVF,IEF}

BMSIS	30																	
BIIS	26	CE	BW	WW	YW	DMI	SC	SCF	MM	M&G	MCE	MCW	UDDR	TEAT	CW	FAT	REA	MARB
CHBS	34	6.1	2.4	64	102	0.4	1.4	20.4	27	59	7.4	89	1.15	1.25	82	0.045	0.55	0.08

- This Leader will definitely get your attention. She has all the bells and whistles – dark red, red-necked, goggle-eyed and a tremendous set of EPDs. She's the real deal and can also wear the show halter well.
- Co-owed with MKS Ranch, Skiatook, Okla.



Lot 21 – MKS 109 221 Merry Gold 4D

LOT 21 Cow

MKS 109 221 MERRY GOLD 4D

P43709577 – Calved: Feb. 9, 2016 – Tattoo: LE 4D/RE MKS

TH 122 711 VICTOR 719T {SOD}{CHB}{DLF,HVF,IEF} DRF JWR PRINCE VICTOR 711 {SOD}
 CRR 719 CATAPULT 109 {DLF,HVF,IEF} KBCR 19D DOMINETTE 122 {DLF,IEF}
 P43186342 CRR 4037 ECLIPSE 808 {DLF,HVF,IEF} THM DURANGO 4037 {SOD}{DLF,HVF,IEF}
 CRR 420 ECLIPSE 688 {DLF,HVF,IEF}

MSU TCF REVOLUTION 4R {SOD}{CHB}{DLF,HVF,IEF} FELTONS LEGEND 242 {SOD}{HVF}
 RJL LCC JUST BEING MERRY 221 MSU TCF RACHAEL ET 54N {DLF,HVF,IEF}
 P43277529 LCC 414R BE MERRY 9195 {DLF,HVF,IEF} STAR 68M CARLTON 414R ET
 LCC MERRY TIME 244 {DLF,HVF,IEF}

BMSIS	31																	
BIIS	25	CE	BW	WW	YW	DMI	SC	SCF	MM	M&G	MCE	MCW	UDDR	TEAT	CW	FAT	REA	MARB
CHBS	31	0.4	3.3	61	94	0.4	1.1	21.3	28	58	3.3	97	1.10	1.20	72	0.005	0.61	0.01

- This 2-year-old Catapult out of a Revolution has done an amazing job on her first calf. She is long bodied, long necked and pretty uddered. Her EPDs and special mating to Online should peak your interest.
- AI serviced to Remital Online 122L. Safe to AI. Due Jan. 20, 2019.
- Co-owned with MKS Ranch, Skiatook, Okla.



Lot 22 – MKS 72C 2A Lady Ribeye 23E

LOT 22 Cow

MKS 72C 2A LADY RIBEYE 23E

P43792950 – Calved: April 3, 2017 – Tattoo: LE 23E/RE MKS

NJW 98S R117 RIBEYE 88X ET {SOD}{DLF,HVF,IEF} SHF RIB EYE M326 R117 {SOD}{DLF,HVF,IEF}
 MKS 88X 144U RIBEYE 72C {DLF,HVF,IEF} NJW 9126J DEW DOMINO 98S {DOD}{DLF,HVF,IEF}
 43614995 STAR MKS SHINY PENNIE 144U {DLF,HVF,IEF} STAR BRIGHT FUTURE 533P ET {SOD}{DLF,HVF,IEF}
 STAR MKS P606 BELLE 352R

STAR KCL BREAKOUT 3T ET {DLF,HVF,IEF} FELTONS BREAK THROUGH
 MKS 3T LADY HELIOS 2A STAR RICKI 162M {DLF,HVF,IEF}
 P43365237 STAR MKS SHEER CLASS 263W ET {DLF,HVF,IEF} STAR KKH SSF BRIGHT KELLY 408 ET {DLF,HVF,IEF}
 STAR MKS WESTERN STAR 55 {DLF,HVF,IEF}

BMSIS	21																	
BIIS	18	CE	BW	WW	YW	DMI	SC	SCF	MM	M&G	MCE	MCW	UDDR	TEAT	CW	FAT	REA	MARB
CHBS	30	1.1	3.1	46	75	-0.2	0.8	12.1	24	47	4.7	68	1.30	1.30	61	-0.005	0.34	0.18

- A great cow prospect with maternal icons 88X and P606 backing her up.
- AI serviced May 15, 2018, to R Leader 6964, then pasture exposed May 17 to July 1, 2018, to EXR Access 6005 (P43661495).
- Co-owned with MKS Ranch, Skiatook, Okla.

LANDRUM FAMILY FARMS

1412 W. 900 S. • Warren, IN 46792
 Thatcher 260-917-0177
 Joe 260-466-8149
 Jane 260-917-0036



Landrum Family Farms • 1412 W. 900 S. • Warren IN 46792 • Thatcher 260-917-0177 • Joe 260-466-8149 • Jane 260-917-0036



Lot 23 – LFF Leaving A Legacy 6101 1811

LOT
23
Cow

LFF LEAVING A LEGACY 6101 1811

P43933296 – Calved: Feb. 19, 2018 – Tattoo: LE 1811

LJR 023R WHITMORE 10W {CHB}{DLF,HVF,IEF}	KJ C&L J119 LOGIC 023R ET {SOD}{DLF,HVF,IEF}
NJW 84B 10W JOURNEY 53D {DLF,HVF,IEF}	LJR MICKEY 278N {DOD}{DLF,IEF}
P43721750 NJW 16S 100W JOEY 84B ET {DLF,HVF,IEF}	NJW 73S M326 TRUST 100W ET {SOD}{CHB}{DLF,HVF,IEF}
	TLELL 117F JOEY 16S {DLF,HVF,IEF}
BOYD MASTERPIECE 0220 {CHB}{DLF,HVF,IEF}	SHF RIB EYE M326 R117 {SOD}{DLF,HVF,IEF}
BOYD 108X DOREEN 6101	SSF P606 MS VICTOR 803 {DLF,HVF,IEF}
P43682482 NJW 8S 4037 DOREEN 108X {DLF,HVF,IEF}	THM DURANGO 4037 {SOD}{DLF,HVF,IEF}
	NJW 9126J K014 DOREEN 8S ET {DLF,HVF,IEF}

- This lady is a tremendous cow prospect with a very bright future. Her sire was the \$50,000 selection in the 2017 NJW bull sale that sold to Perez Cattle Co., Boyd Beef Cattle, Mead Cattle and others. Doreen 6101 was our pick in the 2017 Breeders Cup sale at Boyd Beef in Kentucky. Her dam, Doreen 108X, has been a top donor for Boyds. Start your "Journey" to excellence right here!
- Halter broke
- BW 72 lb.

BMIS	28																			
BIIS	24	CE	BW	WW	YW	DMI	SC	SCF	MM	M&G	MCE	MCW	UDDR	TEAT	CW	FAT	REA	MARB		
CHBS	33	0.7	2.9	57	93	0.5	1.0	18.8	26	54	1.2	89	1.30	1.30	81	0.015	0.60	0.12		



Lot 24 – LFF Hometown Princess 1216 1802

LOT 24 Cow

LFF HOMETOWN PRINCESS I216 1802

P43929059 – Calved: Jan. 24, 2018 – Tattoo: LE 1802

SHF WONDER M326 W18 ET (CHB){DLF,HVF,IEF}
 NJW 73S W18 HOMETOWN 10Y ET (CHB){DLF,HVF,IEF}
 P43214853 NJW P606 72N DAYDREAM 73S (DLF,HVF,IEF)

KCF BENNETT 3008 M326 (SOD){DLF,HVF,IEF}
 SHF GOVERNESS 2366 L37 (DLF,HVF,IEF)
 PW VICTOR BOOMER P606 (SOD){DLF,HVF,IEF}
 NJW 94J DEW 72N (DLF,HVF,IEF)

BHR 2T BARB WIRE 924 ET
 924 MISS LILY 1216
 P43326903 BOOT HILL BELL 884

MSU TCF TITLEIST 2T ET (DLF,HVF,IEF)
 STAR OKALANI BARBIE 524P (DLF,HVF,IEF)
 MOHICAN ROUGHOUT 428R ET (DLF,HVF,IEF)
 BOOT HILL MISS BELLE 530

- We really don't like selling this heifer because of the maternal influence of Lily 1216 in our herd. We have retained every other daughter of 1216 and they, along with Mom, are the core of our herd. We reluctantly decided we would offer one of our very best.
- Halter broke
- BW 74 lb.

BMSI	23																	
BIIS	20	CE	BW	WW	YW	DMI	SC	SCF	MM	M&G	MCE	MCW	UDDR	TEAT	CW	FAT	REA	MARB
CHBS	32	3.2	2.8	57	96	0.4	1.2	12.6	29	57	0.4	115	1.10	1.20	75	0.035	0.57	0.27



924 Miss Lily 1216 – Dam of Lot 24



**NJW P606 72N Daydream 73S
 – Famed donor grandam of Lot 24**



Lot 25 – LFF Lambeau 1008 1807

LOT 25 Cow

LFF LAMBEAU 1008 1807

P43925821 – Calved: Feb. 3, 2018 – Tattoo: LE 1807

TH 22R 16S LAMBEAU 17Y (DLF,HYF,IEF) TH 121L 63N TUNDRA 16S (DLF,HYF,IEF)
 TH 411X 17Y LAMBEAU 86A (DLF,HYF,IEF) TH 62N 3L KELSEY 22R (DLF,HYF,IEF)
 P43360363 TH 223 71I DOMINETTE 411X ET (DOD){DLF,HYF,IEF} DRF JWR PRINCE VICTOR 71I (SOD)
 KBCR 19D DOMINETTE 223 (DLF,IEF)
 MSU TCF REVOLUTION 4R (SOD){CHB}{DLF,HYF,IEF} FELTONS LEGEND 242 (SOD){HYF}
 GRASSY RUN CHRISTY 1008 MSU TCF RACHAEL ET 54N (DLF,HYF,IEF)
 P43171797 GRF CHRISTY 909 JR SOUTHERN CROSS Z17 (SOD){DLF,HYF,IEF}
 GMF MISS GERTIE T709

- A super cow prospect out of the lead off cow in the 2017 Grassy Run Farms Mature Cow Herd Dispersal. This heifer's paternal grandmother, Dominette 411X, is a full sister to the famed AI sire TH 223 71I Victor 755T. We expect 1807 to develop into a maternal giant.
- Halter broke
- BW 65 lb.

BMSI	27																	
BIIS	23	CE	BW	WW	YW	DMI	SC	SCF	MM	M&G	MCE	MCW	UDDR	TEAT	CW	FAT	REA	MARB
CHBS	28	6.1	1.3	56	89	0.2	0.9	18	24	52	6	99	1.50	1.60	63	0.045	0.43	0.19



Grassy Run Christy 1008 – Dam of Lot 25



TH 411X 17Y Lambeau 86A – Sire of Lot 25



Lot 26A – LFF Mister Cash 1504 1801



Boyd Ft Knox 17Y XZ5 4040 – Sire of Lots 26A and 27A

- We feel this complete, sound and stylish son of the popular Select Sires Ft Knox has quite a future as a breeding tool. He is a birth weight tool that will leave excellent replacement females.
- Halter broke
- BW 60 lb.



LFF MISTER CASH 1504 1801

P43929064 – Calved: Jan. 22, 2018 – Tattoo: LE 1801

TH 22R 16S LAMBEAU 17Y {DLF,HVF,IEF} TH 121L 63N TUNDRA 16S {DLF,HVF,IEF}
 BOYD FT KNOX 17Y XZ5 4040 {DLF,HVF,IEF} TH 62N 3L KELSEY 22R {DLF,HVF,IEF}
 P43472233 DOSS MY EYES ADORE U DHZ5 {DLF,HVF,IEF} BOYD WORLDWIDE 9050 ET {SOD}{DLF,HVF,IEF}
 DHF COVER GIRL C902

STAR BRITE EXPECTATIONS 33Y ET {DLF,HVF,IEF} STAR BRIGHT FUTURE 533P ET {SOD}{DLF,HVF,IEF}
 LFF RHIANNA 1504 STAR MISS AMERICA 12P {DLF,HVF,IEF}
 P43651346 LFF 924 MISS RHIANNA 1217 BHR 2T BARB WIRE 924 ET
 RED HILLS RHIANNA 61M S234

BMS	22																	
BIIS	18	CE	BW	WW	YW	DMI	SC	SCF	MM	M&G	MCE	MCW	UDDR	TEAT	CW	FAT	REA	MARB
CHBS	27	6.1	0.9	49	79	-0.2	0.9	13.7	23	48	6.5	80	1.30	1.50	55	0.025	0.28	0.07



Lot 26 – LFF Rhianna 1504



LFF RHIANNA 1504

P43651346 – Calved: Feb. 3, 2015 – Tattoo: RE 1504

STAR BRIGHT FUTURE 533P ET {SOD}{DLF,HVF,IEF} REMITALL ONLINE 122L {SOD}{CHB}{DLF,HVF,IEF}
 STAR BRITE EXPECTATIONS 33Y ET {DLF,HVF,IEF} RB L1 DOMINETTE 8116 {DLF,HVF,IEF}
 P43167492 STAR MISS AMERICA 12P {DLF,HVF,IEF} STAR AMERICA BNMHPH SS MKS 68M {DLF,HVF,IEF}
 HAROLDSON'S 42H GEM 24K

BHR 2T BARB WIRE 924 ET MSU TCF TITLEIST 2T ET {DLF,HVF,IEF}
 LFF 924 MISS RHIANNA 1217 STAR OKALANI BARBIE 524P {DLF,HVF,IEF}
 P43326897 RED HILLS RHIANNA 61M S234 DLR STOCKMAKER 61M
 DLR MISS ENOUGH 64M

BMS	17																		
BIIS	15	CE	BW	WW	YW	DMI	SC	SCF	MM	M&G	MCE	MCW	UDDR	TEAT	CW	FAT	REA	MARB	
CHBS	28	3.2	1.4	45	74	-0.1	0.8	9.4	21	43	6.5	89	1.20	1.30	61	0.015	0.25	-0.01	

- Rhianna is from our oldest cow family. Grandmother S234 is still in our herd and is easy keeping and functional as they come.
- AI serviced April 8, 2018, to R Leader, 6964, then pasture exposed May 16 to July 31, 2018, to CLF GCC Entice C309. Safe to AI service.



Lot 27 – LFF Mallie 1611



Lot 27A – LFF Princess Knox 1611 1803

LOT 27
Cow

LFF MALLIE 1611

P43694651 – Calved: Feb. 9, 2016 – Tattoo: LE 1611

NS LAKES KILO 002
LAKE 002 KILOWATTS 104S (DLF,HYF,IEF)
P42698463 TNJ VICK NIKI 9104 9207C

JSF 37 271 DEVO 23C (SOD)
GK APOLLONIA 834Z
PW NICK 9104 (SOD)
TNJ DETERMINATE 15G 17F

STAR BRITE EXPECTATIONS 33Y ET (DLF,HYF,IEF)
LFF MALLIE33Y 1412
P43522934 BOOT HILL MALINDA 1021

STAR BRIGHT FUTURE 533P ET (SOD)(DLF,HYF,IEF)
STAR MISS AMERICA 12P (DLF,HYF,IEF)
BHR RH MASTER 711
RED HILLS RHIANNA 61M S234

BMSI	17																	
BIIS	15	CE	BW	WW	YW	DMI	SC	SCF	MM	M&G	MCE	MCW	UDDR	TEAT	CW	FAT	REA	MARB
CHBS	27	-8.3	4.7	54	85	0.1	0.7	9.9	19	46	-7.6	85	1.20	1.20	60	-0.015	0.23	-0.09

- A 2-year-old doing a super job. She is from the same S234 cow family as Lot 26.
- AI serviced April 7, 2018, to NJW 73S M326 Trust 100W ET, then pasture exposed June 21 to July 31, 2018, to CLF GCC Entice C309. Safe to AI service.

LOT 27A
Cow

LFF PRINCESS KNOX 1611 1803

43929060 – Calved: Jan. 24, 2018 – Tattoo: LE 1803

TH 22R 16S LAMBEAU 17Y (DLF,HYF,IEF)
BOYD FT KNOX 17Y XZ5 4040 (DLF,HYF,IEF)
P43472233 DOSS MY EYES ADORE U DHZ5 (DLF,HYF,IEF)

TH 121L 63N TUNDRRA 16S (DLF,HYF,IEF)
TH 62N 3L KELSEY 22R (DLF,HYF,IEF)
BOYD WORLDWIDE 9050 ET (SOD)(DLF,HYF,IEF)
DHF COVER GIRL C902

LAKE 002 KILOWATTS 104S (DLF,HYF,IEF)
LFF MALLIE 1611
P43694651 LFF MALLIE33Y 1412

NS LAKES KILO 002
TNJ VICK NIKI 9104 9207C
STAR BRITE EXPECTATIONS 33Y ET (DLF,HYF,IEF)
BOOT HILL MALINDA 1021

BMSI	22																	
BIIS	18	CE	BW	WW	YW	DMI	SC	SCF	MM	M&G	MCE	MCW	UDDR	TEAT	CW	FAT	REA	MARB
CHBS	26	-0.5	2.6	54	84	-0.1	0.8	13.9	23	49	-1	78	1.30	1.40	54	0.015	0.27	0.02

- Dehorned. We used Ft Knox for his calving ease. We have been completely satisfied. Not only do they come easy, they are high quality and attractive.
- Halter broke
- BW 62 lb.



Lot 28 – LBB LL Reese 62C



Lot 28A – LFF Ready To Advance 62C 1812

LOT 28
Cow

LBB LL REESE 62C

P43602905 – Calved: March 28, 2015 – Tattoo: LE 62C

LAKE 002 KILOWATTS 104S (DLF,HYF,IEF)
GCC JPF LBB ENTICER A117 (DLF,HYF,IEF)
P43357507 JPF K01 MS EMBRACE U11

NS LAKES KILO 002
TNJ VICK NIKI 9104 9207C
STAR TRF 8006 EMBRACER 229 ET
JPF 315 DREAM K01

LW 111L DSL 59R
WINDYHILLS RYDER 3Y (DOD)
P43213989 WINDY HILLS RITA 606

REMITALL ONLINE 122L (SOD)(CHB)(DLF,HYF,IEF)
LW 115J GENNA 111L
PW VICTOR BOOMER P606 (SOD)(DLF,HYF,IEF)
BROOKVIEW L067 ROSE 61R

BMSI	22																	
BIIS	20	CE	BW	WW	YW	DMI	SC	SCF	MM	M&G	MCE	MCW	UDDR	TEAT	CW	FAT	REA	MARB
CHBS	29	-1.2	4.0	63	92	0.5	1	13.5	22	53	0.8	95	1.20	1.10	72	-0.015	0.54	0.09

- A super attractive 3-year-old
- Pasture exposed May 16 to July 31, 2018, to CLF GCC Entice C309. Observed bred May 22, 2018. Safe in calf

LOT 28A
Cow

LFF READY TO ADVANCE 62C 1812

P43941510 – Calved: Feb. 23, 2018 – Tattoo: LE 1812

HH ADVANCE 4075B ET (DLF,HYF,IEF)
H FHF ADVANCE 624 ET (DLF,HYF,IEF)
P43725904 FHF 408 RITA 21W (DLF,HYF,IEF)

HH ADVANCE 1013Y ET (DLF,HYF,IEF)
HH MISS ADVANCE 0121X (DLF,HYF,IEF)
CH HARLAND 408 (SOD)(DLF,HYF,IEF)
FHF 45P RITA 101T

GCC JPF LBB ENTICER A117 (DLF,HYF,IEF)
LBB LL REESE 62C
P43602905 WINDYHILLS RYDER 3Y (DOD)

LAKE 002 KILOWATTS 104S (DLF,HYF,IEF)
JPF K01 MS EMBRACE U11
LW 111L DSL 59R
WINDY HILLS RITA 606

BMSI	24																	
BIIS	21	CE	BW	WW	YW	DMI	SC	SCF	MM	M&G	MCE	MCW	UDDR	TEAT	CW	FAT	REA	MARB
CHBS	32	0.6	3.7	60	95	0.5	0.7	13.9	24	54	0.3	109	1.25	1.20	78	0.02	0.56	0.24

- Her sire is the popular new herd bull for Lamb Bros. in Wisconsin.
- Halter broke
- BW 70 lb.



Lot 29 – LFF Miss Jazzy 1707

LOT 29 Cow

LFF MISS JAZZY 1707

P43806481 – Calved: March 5, 2017 – Tattoo: LE 1707

GCC JPF LBB ENTICER A117 (DLF,HVF,IEF)
 CLF GCC ENTICE C309 (DLF,HVF,IEF)
 P43605073 GRASSY RUN RACHEL 1012

LAKE 002 KILOWATTS 104S (DLF,HVF,IEF)
 JPF K01 MS EMBRACE 011
 MSU TCF REVOLUTION 4R (SOD)(CHB)(DLF,HVF,IEF)
 GRASSY 837S RACHEL G33

GOBLE HOMEGROWN 213X
 LFF MISS RILEY 213X 1427
 P43522941 BOOT HILL JAZZY 629

RVP STAR 533P CAN-AM ET 57U (DLF,HVF,IEF)
 SRM MISS LILLIE 736 (DLF,HVF,IEF)
 RT DCC 20X KEY MASTER 125L
 ANL 75A JASMIN 46H

BMIS	21																	
BIIS	17	CE	BW	WW	YW	DMI	SC	SCF	MM	M&G	MCE	MCW	UDDR	TEAT	CW	FAT	REA	MARB
CHBS	29	2.6	2.3	48	74	0.1	0.8	12.3	18	42	1.7	88	1.30	1.20	64	-0.005	0.42	0.04

- Jazzy is super deep and thick. She is extremely easy keeping and efficient to feed.
- AI serviced June 9, 2018, to LAKE 002 Kilowatts 104S. Safe to AI.
- Halter broke



Lot 30 – LFF Double Time 301W 1816

LOT 30 Cow

LFF DOUBLE TIME 301W 1816

P43925817 – Calved: March 4, 2018 – Tattoo: LE 1816

CRR 5280 (DLF,HVF,IEF)
 C DOUBLE YOUR MILES 6077 ET (DLF,HVF,IEF)
 P43672888 C 88X NOTICE ME 1311 ET (DLF,HVF,IEF)

CRR 719 CATAPULT 109 (DLF,HVF,IEF)
 CRR 435 KELLY 178 (DOB)(DLF,HVF,IEF)
 NJW 98S R117 RIBEYE 88X ET (SOD)(DLF,HVF,IEF)
 C NOTICE ME ET (DLF,HVF,IEF)

DM BR L1 DOMINO 146 (SOD)(DLF,IEF)
 LCC 146 LEXY 301W ET
 P43001762 MSU WF ALEXIS L46

REMITALL KEYNOTE 20X (SOD)(CHB)
 DM L1 DOMINETTE 518
 REMITALL KEYNOTE 20X (SOD)(CHB)
 WNH OPTIMA 9401 9804

BMIS	24																	
BIIS	20	CE	BW	WW	YW	DMI	SC	SCF	MM	M&G	MCE	MCW	UDDR	TEAT	CW	FAT	REA	MARB
CHBS	31	1	2.4	51	76	0.0	0.7	15	22	48	1.5	82	1.30	1.40	72	0.045	0.58	-0.03

- Sired by the popular Denver Champion. Her dam is bred for power, being a double bred Keynote 20X.
- Halter broke
- BW 75 lb.



Lot 31 – LFF Dream Girl 1822

LOT 31 Cow

LFF DREAM GIRL 1822

P43925806 – Calved: March 16, 2018 – Tattoo: LE 1822

GCC JPF LBB ENTICER A117 (DLF,HVF,IEF)
 CLF GCC ENTICE C309 (DLF,HVF,IEF)
 P43605073 GRASSY RUN RACHEL 1012

LAKE 002 KILOWATTS 104S (DLF,HVF,IEF)
 JPF K01 MS EMBRACE 011
 MSU TCF REVOLUTION 4R (SOD)(CHB)(DLF,HVF,IEF)
 GRASSY 837S RACHEL G33

NJW 72N P606 GOOD DAY 150X ET (DLF,HVF,IEF)
 ESF 150X MAGNOLIA A193
 P43379227 GLENVIEW 3N NECKLACE 7472ET

PW VICTOR BOOMER P606 (SOD)(DLF,HVF,IEF)
 NJW 94J DEW 72N (DLF,HVF,IEF)
 ELM-LODGE NEXT BIG THING 3N
 ELM-LODGE NECKLACE ET 37N

BMIS	26																	
BIIS	21	CE	BW	WW	YW	DMI	SC	SCF	MM	M&G	MCE	MCW	UDDR	TEAT	CW	FAT	REA	MARB
CHBS	29	-0.9	2.6	47	73	-0.1	0.6	16.8	23	47	1.8	77	1.40	1.40	61	-0.005	0.46	0.08

- This deep, thick young lady is bred to be a cow. Glenview 3N Necklace 7472ET was one of the great ones to come out of the Elm Lodge program in Canada. NJW 72N P606 Good Day 150X ET is a full brother to Daydream 73S, dam of Trust, Hometown and Homegrown.
- Halter broke
- BW 65 lb.



Lot 32 – LFF A Good Sensation G359 1819



UPS Sensation 2504 ET – Sire of Lot 32



LFF A GOOD SENSATION G359 1819

P43929063 – Calved: March 11, 2018 – Tattoo: LE 1819

CHURCHILL SENSATION 028X {SOD}{CHB}{DLF,HYF,IEF}
 UPS SENSATION 2504 ET {CHB}{DLF,HYF,IEF}
 P43347360 NJW BW LADYSPORT DEW 78P ET {DLF,HYF,IEF}

UPS DOMINO 3027 {SOD}{DLF,HYF,IEF}
 CHURCHILL LADY 7202T ET {DLF,HYF,IEF}
 RU 20X BOULDER 57G {SOD}
 SADDLE VLY LADYSPORT 120

TH 122 711 VICTOR 719T {SOD}{CHB}{DLF,HYF,IEF}
 G LADY VICTORIE 719T 359
 P43510467 G VICTORIA SUPREME 742

DRF JWR PRINCE VICTOR 711 {SOD}
 KBCR 19D DOMINETTE 122 {DLF,IEF}
 G VICTOR SUPREME 511 110
 G MISS VICTOR 103T 504

BMS	27																	
BIIS	23	CE	BW	WW	YW	DMI	SC	SCF	MM	M&G	MCE	MCW	UDDR	TEAT	CW	FAT	REA	MARB
CHBS	31	5.6	1.0	51	77	-0.2	0.9	18.1	30	55	-0.3	78	1.30	1.30	63	-0.015	0.48	0.06

- Her sire is the popular Sensation 2504. Her dam was bred by A. Goff & Sons in West Virginia and our selection in the J&L Cattle sale in Ohio. Wow, did we make a wise pick! You can also!
- Halter broke
- BW 65 lb.



CLF GCC ENTICE C309 {DLF,HYF,IEF}

P43605073 – Calved: March 2, 2015 – Tattoo: LE C309/RE CLF

LAKE 002 KILOWATTS 104S {DLF,HYF,IEF}
 GCC JPF LBB ENTICER A117 {DLF,HYF,IEF}
 P43357507 JPF K01 MS EMBRACE U11

NS LAKES KILO 002
 TNJ VICK NIKI 9104 9207C
 STAR TRF 8006 EMBRACER 229 ET
 JPF 315 DREAM K01

MSU TCF REVOLUTION 4R {SOD}{CHB}{DLF,HYF,IEF}
 GRASSY RUN RACHEL 1012
 P43171756 GRASSY 837S RACHEL G33

FELTONS LEGEND 242 {SOD}{HYF}
 MSU TCF RACHAEL ET 54N {DLF,HYF,IEF}
 CMF SAH 676M ON TARGET 837S {DLF,HYF,IEF}
 SAH MELANIE E23

BMS	23																	
BIIS	20	CE	BW	WW	YW	DMI	SC	SCF	MM	M&G	MCE	MCW	UDDR	TEAT	CW	FAT	REA	MARB
CHBS	29	-0.9	3.3	58	88	0.4	0.9	14.4	18	47	-1.1	87	1.30	1.20	69	0.005	0.48	0.08



CLF GCC Entice C309 – Featured service sire

- Entice is our walking bull that's doing everything right. He is sound, athletic, easy fleshing and a breeding machine. His calves come easy, grow and have the style and eye appeal we demand. His dam, from Grassy Run Farm, is a most productive daughter of the popular and proven maternal sire Revolution 4R. We are excited about this bull's future.

GMF

• grand meadows farm •

Dave and Jill Bielema
Ben and Lindsay Gandy
Reed, Kara and Fox Loney
Matt and Kristin Capparelli
greatlakesherefordbeef@gmail.com
grandmeadowsfarm.com
616-292-7474



Lot 33A – Grand 6077 43c Starlet F10

grand meadows farm • greatlakesherefordbeef@gmail.com • grandmeadowsfarm.com • 616-292-7474

LOT
33
Cow

GRAND STARLET 43C {DLF,HYF,IEF}

P43662259 – Calved: Dec. 3, 2015 – Tattoo: BE 43C

KJ HVH 33N REDEEM 485T ET {SOD}{DLF,HYF,IEF} SHF RADAR M326 R125 {SOD}{DLF,HYF,IEF}
CHURCHILL STUD 3134A {CHB}{DLF,HYF,IEF} HVH OKSANA 4L 33N {DLF,HYF,IEF}
P42974708 CHURCHILL LADY 002X ET {DLF,HYF,IEF} GOLDEN OAK OUTCROSS 18U {SOD}{CHB}{DLF,HYF,IEF}
CHURCHILL LADY 600S ET {DLF,HYF,IEF}

SPEARHEAD MAGNUM P28 {DLF,HYF,IEF} FELTONS MAGNUM 434 {SOD}{DLF,HYF,IEF}
STAR ONE STAR E NITE 332W ET {DLF,HYF,IEF} FELTONS KATE P70 {DLF,HYF,IEF}
P42974708 STAR GINGER GAL 511P ET {DLF,HYF,IEF} REMITALL ONLINE 122L {SOD}{CHB}{DLF,HYF,IEF}
REMITALL GINGER 23G {DLF,HYF,IEF}

BMSI	23	CE	BW	WW	YW	DMI	SC	SCF	MM	M&G	MCE	MCW	UDDR	TEAT	CW	FAT	REA	MARB
CHBS	35	-1.9	4.7	60	109	0.0	1.6	12.8	28	58	2.6	108	1.40	1.30	73	0.045	0.49	0.21

- This young cow was a standout heifer and is carrying that into her future. Her heifer calf is as good as any.
- AI serviced May 27, 2018 to C Double Your Miles 6077 ET, then pasture exposed June 2 to July 7, 2018, to Churchill Heads Up 410B ET, and then pasture exposed July 7 to Aug. 15, 2018 to H BK CCC SR Game Changer ET. Safe in calf.

LOT
33A
Cow

GRAND 6077 43C STARLET F10

P43891742 – Calved: March 4, 2018 – Tattoo: BE F10

CRR 5280 {DLF,HYF,IEF} CRR 719 CATAPULT 109 {DLF,HYF,IEF}
C DOUBLE YOUR MILES 6077 ET {DLF,HYF,IEF} CRR 435 KELLY 178 {DOD}{DLF,HYF,IEF}
P43672888 C 88X NOTICE ME 1311 ET {DLF,HYF,IEF} NJW 98S R117 RIBEYE 88X ET {SOD}{DLF,HYF,IEF}
C NOTICE ME ET {DLF,HYF,IEF}

CHURCHILL STUD 3134A {CHB}{DLF,HYF,IEF} KJ HVH 33N REDEEM 485T ET {SOD}{DLF,HYF,IEF}
GRAND STARLET 43C {DLF,HYF,IEF} CHURCHILL LADY 002X ET {DLF,HYF,IEF}
P43662259 STAR ONE STAR E NITE 332W ET {DLF,HYF,IEF} SPEARHEAD MAGNUM P28 {DLF,HYF,IEF}
STAR GINGER GAL 511P ET {DLF,HYF,IEF}

BMSI	25	CE	BW	WW	YW	DMI	SC	SCF	MM	M&G	MCE	MCW	UDDR	TEAT	CW	FAT	REA	MARB
CHBS	33	-1.2	4.4	63	101	0.1	1.1	15.1	29	61	0.4	86	1.30	1.30	76	0.035	0.54	0.06

- This sweet, complete heifer speaks to why Double Your Miles is a Grand Meadows herd sire!



Lot 34 – CRR 109 Alexandra 332

LOT 34
Cow

CRR 109 ALEXANDRA 332 {DLF,HVF,IEF}

43384340 – Calved: Feb. 26, 2013 – Tattoo: BE 332

- TH 122 711 VICTOR 719T {SOD}{CHB}{DLF,HVF,IEF}
- DRF JWR PRINCE VICTOR 711 {SOD}
- CRR 719 CATAPULT 109 {DLF,HVF,IEF}
- KBCR 19D DOMINETTE 122 {DLF,IEF}
- P43186342 CRR 4037 ECLIPSE 808 {DLF,HVF,IEF}
- THM DURANGO 4037 {SOD}{DLF,HVF,IEF}
- CRR 420 ECLIPSE 688 {DLF,HVF,IEF}
- TH JWR SOP 166 576 TUNDRA 63N {SOD}{DLF,HVF,IEF}
- RU 20X BOULDER 57G {SOD}
- CRR 63N ANN 972 {DLF,HVF,IEF}
- TEE-JAY 707B GEMINI 16G ET
- 43031971 CRR 73C ANN 202 {DOD}
- RF POSTIVE PLUS 73C {SOD}{DLF,HVF,IEF}
- CRR 651 ANN 038

BMI\$	29	AHA GE-EPD																
BH\$	24	CE	BW	WW	YW	DMI	SC	SCF	MM	M&G	MCE	MCW	UDDR	TEAT	CW	FAT	REA	MARB
CHBS	27	1.8	1.9	56	94	0.4	0.8	20.7	27	55	2.2	93	1.10	1.10	59	-0.015	0.33	0.03

- This Coyote Ridge bred herd matron has power cow written all over her!
- AI serviced May 27, 2018 to C Double Your Miles 6077 ET, then pasture exposed June 2 to July 7, 2018, to Churchill Heads Up 410B ET, and then pasture exposed July 7 to Aug. 15, 2018 to H BK CCC SR Game Changer ET. Safe in calf.

LOT 34A
Bull

GRAND ELLIPSIS 410B 332 F19 {DLF,HVF,IEF}

P43892993 – Calved: March 23, 2018 – Tattoo: BE F19

- CHURCHILL SENSATION 028X {SOD}{CHB}{DLF,HVF,IEF}
- UPS DOMINO 3027 {SOD}{DLF,HVF,IEF}
- CHURCHILL HEADS UP 410B ET {DLF,HVF,IEF}
- CHURCHILL LADY 7202T ET {DLF,HVF,IEF}
- P43475713 CHURCHILL LADY 002X ET {DLF,HVF,IEF}
- GOLDEN OAK OUTCROSS 18U {SOD}{CHB}{DLF,HVF,IEF}
- CHURCHILL LADY 600S ET {DLF,HVF,IEF}
- CRR 719 CATAPULT 109 {DLF,HVF,IEF}
- TH 122 711 VICTOR 719T {SOD}{CHB}{DLF,HVF,IEF}
- CRR 109 ALEXANDRA 332 {DLF,HVF,IEF}
- CRR 4037 ECLIPSE 808 {DLF,HVF,IEF}
- 43384340 CRR 63N ANN 972 {DLF,HVF,IEF}
- TH JWR SOP 166 576 TUNDRA 63N {SOD}{DLF,HVF,IEF}
- CRR 73C ANN 202 {DOD}

BMI\$	28	AHA GE-EPD																
BH\$	23	CE	BW	WW	YW	DMI	SC	SCF	MM	M&G	MCE	MCW	UDDR	TEAT	CW	FAT	REA	MARB
CHBS	26	9.9	-0.5	45	76	0.1	1.2	19.8	33	55	6.4	46	1.30	1.40	57	0.025	0.30	0.11

- This Heads Up bull calf has numbers for heifers, but you can expect plenty of power and phenotype too!



Churchill Heads Up 410B – Featured sire

Lot 34A – Grand Ellipsis 410B 332 F19





Lot 35 – Grand Doreah D04



CSF Polly 308U and Grand Khaleesi 4B
 2014 JNHE Class Winner
 Grandam and Dam of Lot 35



GRAND DOREAH D04 {DLF,HYF,IEF}

P43673064 – Calved: Feb. 24, 2016 – Tattoo: BE D04

H H PERFECT TIMING 0150 ET {DLF,HYF,IEF} CRR ABOUT TIME 743 {SDD}{DLF,HYF,IEF}
 GRAND SKYFALL 1B {DLF,HYF,IEF} HH MISS ADVANCE 6041S ET {DLF,HYF,IEF}
 P43453732 GRAND ALEXIS 22Z ET {DLF,HYF,IEF} GOLDEN OAK OUTCROSS 18U {SDD}{CHB}{DLF,HYF,IEF}
 H BK CCC SR GAME CHANGER ET {CHB}{DLF,HYF,IEF} KJ HVH 33N REDEEM 485T ET {SDD}{DLF,HYF,IEF}
 GRAND KHALEESI 4B {DLF,HYF,IEF} NJW 78P 63N LADYSPORT 51W ET {DLF,HYF,IEF}
 P43464164 CSF POLLY 308U {DLF,HYF,IEF} DM BR SOONER {CHB}{DLF,HYF,IEF}
 LCC 25H POLLY 642

BMS	28																	
BIIS	24	CE	BW	WW	YW	DMI	SC	SCF	MM	M&G	MCE	MCW	UDDR	TEAT	CW	FAT	REA	MARB
CHBS	36	2.7	3.6	66	97	0.2	0.8	17.7	21	54	4.6	104	1.50	1.50	85	0.015	0.75	-0.03

• A nice addered young cow with a sleeper heifer calf. Her pedigree echoes the heart of our program with Perfect Timing and Game Changer playing a role. Her dam was a class winner for Kristin at the 2014 JHNE. AI serviced May 27, 2018 to C Double Your Miles 6077 ET, then pasture exposed June 2 to July 7, 2018, to Churchill Heads Up 410B ET, and then pasture exposed July 7 to Aug. 15, 2018 to H BK CCC SR Game Changer ET. Safe in calf.



GRAND 0165X D04 DOREAH F52

P43941770 – Calved: May 7, 2018 – Tattoo: BE F52

GOLDEN OAK OUTCROSS 18U {SDD}{CHB}{DLF,HYF,IEF} GOLDEN-OAK FUSION 3S {DLF,HYF,IEF}
 CHURCHILL TARGET 0165X ET {DLF,HYF,IEF} GOLDEN-OAK GOD MALLORY 15M
 P43092381 CHURCHILL LADY 600S ET {DLF,HYF,IEF} BR MOLER ET {CHB}{DLF,IEF}
 CHURCHILL LADY 989
 GRAND SKYFALL 1B {DLF,HYF,IEF} H H PERFECT TIMING 0150 ET {DLF,HYF,IEF}
 GRAND DOREAH D04 {DLF,HYF,IEF} GRAND ALEXIS 22Z ET {DLF,HYF,IEF}
 P43673064 GRAND KHALEESI 4B {DLF,HYF,IEF} H BK CCC SR GAME CHANGER ET {CHB}{DLF,HYF,IEF}
 CSF POLLY 308U {DLF,HYF,IEF}

BMS	27																	
BIIS	23	CE	BW	WW	YW	DMI	SC	SCF	MM	M&G	MCE	MCW	UDDR	TEAT	CW	FAT	REA	MARB
CHBS	35	1.5	4.2	68	105	0.3	0.9	16.3	22	56	4.4	122	1.45	1.40	82	0.005	0.73	0.03

• Only a May baby here. What can we say? Bred right and plenty of potential.



H BK CCC SR Game Changer ET – Grandsire of Lot 35
 and Resident Herd Sire at GMF



H BK CCC SR GAME CHANGER ET {CHB}{DLF,HYF,IEF}

P43296077 – Calved: March 12, 2012 – Tattoo: BE 2447

SHF RADAR M326 R125 {SDD}{DLF,HYF,IEF} KCF BENNETT 3008 M326 {SDD}{DLF,HYF,IEF}
 KJ HVH 33N REDEEM 485T ET {SDD}{DLF,HYF,IEF} SHF POSTIVE MISS 73C M15 {DLF,HYF,IEF}
 P42834201 HVH OKSANA 4L 33N {DLF,HYF,IEF} HVH KREMLIN 57F 108K
 HVH GENETIC QUEEN 53H 4L {DLF,HYF,IEF}
 TH JWR SOP 166 576 TUNDRA 63N {SDD}{DLF,HYF,IEF} RU 20X BOULDER 57G {SDD}
 NJW 78P 63N LADYSPORT 51W ET {DLF,HYF,IEF} TEE-JAY 707B GEMINI 16G ET
 P43002919 NJW BW LADYSPORT DEW 78P ET {DLF,HYF,IEF} RU 20X BOULDER 57G {SDD}
 SADDLE VLY LADYSPORT 120

BMS	27																	
BIIS	22	CE	BW	WW	YW	DMI	SC	SCF	MM	M&G	MCE	MCW	UDDR	TEAT	CW	FAT	REA	MARB
CHBS	36	-5.4	5.5	59	95	-0.1	0.7	16.1	24	53	0.0	136	1.40	1.40	77	-0.015	0.73	-0.07

• Division winner at 2012 Agribition and 2013 Fort Worth.
 • His calves come easy, well marked and vigorous with an awesome phenotype and body mass to go with it!



Lot 36A – Grand Oblivion 2447 4A F7

LOT 36
Cow

GRAND PEARL 4A {DLF,HYF,IEF}

P43384603 – Calved: Feb. 15, 2013 – Tattoo: BE 4A

- CL 1 DOMINO 637S 1ET
- CL 1 DOMINO 955W {SOD}{CHB}{DLF,HYF,IEF}
- 42982422 CL 1 DOMINETTE 5152R {DLF,HYF,IEF}
- CL 1 DOMINO 03396 {SOD}{DLF,IEF}
- CL 1 DOMINETTE 118L
- CL 1 DOMINO 3162N {CHB}{DLF,IEF}
- CL 1 DOMINETTE 392N
- REMITALL ONLINE 122L {SOD}{CHB}{DLF,HYF,IEF}
- REMITALL EMBRACER 8E {SOD}{CHB}{HYF}
- REMITALL CATALINA 24H
- BR L1 DOMINO 1067
- MSU PEARL BONITA
- RB MISS 122L ENCORE P404 {DLF,HYF,IEF}
- P42531346 MSU TCF PEARL 59G ET

BMS	19	AHA GE-EPD																
BIIS	17	CE	BW	WW	YW	DMI	SC	SCF	MM	M&G	MCE	MCW	UDDR	TEAT	CW	FAT	REA	MARB
CHBS	30	-2.1	3.7	55	86	0.1	0.8	10.6	18	45	-1.8	88	1.30	1.30	67	0.005	0.44	0.11

- 4A is another power cow in the bunch.
- 955W plays an outcross role in her pedigree and his semen is hard to come by.
- The calf at her side says it all.
- AI serviced May 27, 2018 to C Double Your Miles 6077 ET, then pasture exposed June 2 to July 7, 2018, to Churchill Heads Up 410B ET, and then pasture exposed July 7 to Aug. 15, 2018 to H BK CCC SR Game Changer ET. Safe in calf.

LOT 36A
Bull

GRAND OBLIVION 2447 4A F7 {DLF,HYF,IEF}

P43893000 – Calved: March 4, 2018 – Tattoo: BE F7

- CRR 5280 {DLF,HYF,IEF}
- C DOUBLE YOUR MILES 6077 ET {DLF,HYF,IEF}
- P43672888 C 88X NOTICE ME 1311 ET {DLF,HYF,IEF}
- CRR 719 CATAPULT 109 {DLF,HYF,IEF}
- CRR 435 KELLY 178 {DOB}{DLF,HYF,IEF}
- NJW 98S R117 RIBEYE 88X ET {SOD}{DLF,HYF,IEF}
- C NOTICE ME ET {DLF,HYF,IEF}
- CL 1 DOMINO 955W {SOD}{CHB}{DLF,HYF,IEF}
- GRAND PEARL 4A {DLF,HYF,IEF}
- P43384603 RB MISS 122L ENCORE P404 {DLF,HYF,IEF}
- CL 1 DOMINO 637S 1ET
- CL 1 DOMINETTE 5152R {DLF,HYF,IEF}
- REMITALL ONLINE 122L {SOD}{CHB}{DLF,HYF,IEF}
- MSU TCF PEARL 59G ET

BMS	23	AHA GE-EPD																
BIIS	19	CE	BW	WW	YW	DMI	SC	SCF	MM	M&G	MCE	MCW	UDDR	TEAT	CW	FAT	REA	MARB
CHBS	31	3.6	1.9	53	77	0.2	0.9	13.7	29	55	2.2	83	1.20	1.25	73	0.01	0.54	0.07

- This stout, well made bull calf is the first to catch a visitor's eye and for good reason.
- An awesome representation of what Double Your Miles can do!



Lot 36 – Grand Pearl 4A



Lot 37 – LBB GNA Image Gal 43C



Lot 37A – Grand 504B 143C Image Gal F32

LOT
37
Cow

LBB GNA IMAGE GAL 43C {DLF,HYF,IEF}

P43602903 – Calved: March 13, 2015 – Tattoo: LE 43C

LAKE 002 KILOWATTS 104S {DLF,HYF,IEF}
GCC JPF LBB ENTICER A117 {DLF,HYF,IEF}
P43357507 JPF K01 MS EMBRACE U11

NS LAKES KILO 002
TNJ VICK NIKI 9104 9207C
STAR TRF 8006 EMBRACER 229 ET
JPF 315 DREAM K01

SB 122L GIT-R-DONE 19R ET {CHB}{DLF,HYF,IEF}
GOBLE IMAGE GAL 301W {DLF,HYF,IEF}
P43005969 IMAGE GAL 19D 992

REMITALL ONLINE 122L {SOD}{CHB}{DLF,HYF,IEF}
RU 20X ERIN 54E
NIJW 1Y WRANGLER 19D {SOD}{DLF,HYF,IEF}
WILGOR 4T THORA 28U 58B

BMS	19	CE	BW	WW	YW	DMI	SC	SCF	MM	M&G	MCE	MCW	UDDR	TEAT	CW	FAT	REA	MARB
BIIS	17	-1.5	5.0	63	91	0.2	0.9	10.9	16	47	1	90	1.10	1.20	66	-0.015	0.58	0.00
CHBS	29	-1.5	5.0	63	91	0.2	0.9	10.9	16	47	1	90	1.10	1.20	66	-0.015	0.58	0.00

- Well made young cow which comes from the heart of the Goble's breeding program.
- AI serviced May 27, 2018 to C Double Your Miles 6077 ET, then pasture exposed June 2 to July 7, 2018, to Churchill Heads Up 410B ET, and then pasture exposed July 7 to Aug. 15, 2018 to H BK CCC SR Game Changer ET. Safe in calf.

LOT
37A
Cow

GRAND 504B 143C IMAGE GAL F32

P43891457 – Calved: March 20, 2018 – Tattoo: BE F32

AH JDH CRACKER JACK 26U ET {DLF,HYF,IEF}
GOBLE RAISE THEM RIGHT 504B ET {DLF,HYF,IEF}
P43489020 STAR MKS WESTERN PEACH T33R ET {DLF,HYF,IEF}

NIJW 1Y WRANGLER 19D {SOD}{DLF,HYF,IEF}
CRR D03 VIOLET 349 {DLF,HYF,IEF}
REMITALL ONLINE 122L {SOD}{CHB}{DLF,HYF,IEF}
STAR MKS STARLENA SS 165M

GCC JPF LBB ENTICER A117 {DLF,HYF,IEF}
LBB GNA IMAGE GAL 43C {DLF,HYF,IEF}
P43602903 GOBLE IMAGE GAL 301W {DLF,HYF,IEF}

LAKE 002 KILOWATTS 104S {DLF,HYF,IEF}
JPF K01 MS EMBRACE U11
SB 122L GIT-R-DONE 19R ET {CHB}{DLF,HYF,IEF}
IMAGE GAL 19D 992

BMS	19	CE	BW	WW	YW	DMI	SC	SCF	MM	M&G	MCE	MCW	UDDR	TEAT	CW	FAT	REA	MARB
BIIS	17	-1.5	4.4	59	91	0.1	0.9	10.2	18	48	0.7	93	1.20	1.20	68	0.005	0.52	0.12
CHBS	31	-1.5	4.4	59	91	0.1	0.9	10.2	18	48	0.7	93	1.20	1.20	68	0.005	0.52	0.12

- Eye pigment, eye candy!



Lot 38 – Walker Lady Cat 4248 210 618D



Lot 38A – Grand 410B 618D Lady Cat F34

LOT
38
Cow

WALKER LADY CAT 4248 210 618D {DLF,HYF,IEF}

P43688036 – Calved: Jan. 18, 2016 – Tattoo: LE 618

NIJW 73S M326 TRUST 100W ET {SOD}{CHB}{DLF,HYF,IEF}
C ETF WILDCAT 4248 ET {CHB}{DLF,HYF,IEF}
P43487262 RPH MAIDEN 95T {DLF,HYF,IEF}

KCF BENNETT 3008 M326 {SOD}{DLF,HYF,IEF}
NIJW P606 72N DAYDREAM 73S {DLF,HYF,IEF}
SHF PHOENIX M33 P68
C MS GAME PLAN 5161 {DOD}

KCF BENNETT M326 S342 {CHB}{DLF,HYF,IEF}
WALKER MISS S342 899 210
P43269237 WALKER MISS 218 74K 899 ET

KCF BENNETT 3008 M326 {SOD}{DLF,HYF,IEF}
KCF MISS M106 P433 {DLF,HYF,IEF}
RHF VICTOR 424 218 {SOD}{DLF,HYF,IEF}
DIRT ROAD TORI 9329 74K

BMS	31	CE	BW	WW	YW	DMI	SC	SCF	MM	M&G	MCE	MCW	UDDR	TEAT	CW	FAT	REA	MARB
BIIS	26	-4.2	2.9	51	88	0.0	1.2	19.3	32	57	1.7	93	0.70	0.60	74	0.005	0.38	0.41
CHBS	35	-4.2	2.9	51	88	0.0	1.2	19.3	32	57	1.7	93	0.70	0.60	74	0.005	0.38	0.41

- The Wildcat daughters are drawing discerning breeder's attention and this nice Walker bred female is no exception.
- AI serviced May 27, 2018 to C Double Your Miles 6077 ET, then pasture exposed June 2 to July 7, 2018, to Churchill Heads Up 410B ET, and then pasture exposed July 7 to Aug. 15, 2018 to H BK CCC SR Game Changer ET. Safe in calf.

LOT
38A
Cow

GRAND 410B 618D LADY CAT F34

P43891752 – Calved: March 21, 2018 – Tattoo: BE F34

CHURCHILL SENSATION 028X {SOD}{CHB}{DLF,HYF,IEF}
CHURCHILL HEADS UP 410B ET {DLF,HYF,IEF}
P43475713 CHURCHILL LADY 002X ET {DLF,HYF,IEF}

UPS DOMINO 3027 {SOD}{DLF,HYF,IEF}
CHURCHILL LADY 7202T ET {DLF,HYF,IEF}
GOLDEN OAK OUTCROSS 18U {SOD}{CHB}{DLF,HYF,IEF}
CHURCHILL LADY 600S ET {DLF,HYF,IEF}

C ETF WILDCAT 4248 ET {CHB}{DLF,HYF,IEF}
WALKER LADY CAT 4248 210 618D {DLF,HYF,IEF}
P43688036 WALKER MISS S342 899 210

NIJW 73S M326 TRUST 100W ET {SOD}{CHB}{DLF,HYF,IEF}
RPH MAIDEN 95T {DLF,HYF,IEF}
KCF BENNETT M326 S342 {CHB}{DLF,HYF,IEF}
WALKER MISS 218 74K 899 ET

BMS	29	CE	BW	WW	YW	DMI	SC	SCF	MM	M&G	MCE	MCW	UDDR	TEAT	CW	FAT	REA	MARB
BIIS	24	-3.4	4.2	55	92	0.0	1.4	19	35	63	1.0	81	1.00	1.00	68	0.005	0.39	0.19
CHBS	32	-3.4	4.2	55	92	0.0	1.4	19	35	63	1.0	81	1.00	1.00	68	0.005	0.39	0.19

- Heads Up progeny have shown great potential and this young lady is no exception.

grandmeadowsfarm.com • 616-292-7474
greatlakesherefordbeef@gmail.com • grandmeadowsfarm.com



Lot 39A – Grand 6077 8144 Dora F20

LOT 39
Cow

MF 308N DORINDA 8144 ID ET {DLF,HYF,IEF}

P43715324 – Calved: Feb. 13, 2016 – Tattoo: BE 1D

DM BR SOONER {CHB}{DLF,HYF,IEF}
BR CURRENCY 8144 ET {DLF,HYF,IEF}
42971671 BR GABRIELLE 5082 {DLF,HYF,IEF}

REMITALL ONLINE 122L {SOD}{CHB}{DLF,HYF,IEF}
DM L1 DOMINETTE 901 {DLF,HYF,IEF}
BR LANSING 3060
BR GOLDRIEL 3029 ET {DLF,HYF,IEF}

REMITALL ONLINE 122L {SOD}{CHB}{DLF,HYF,IEF}
MF 62J NATALIE 122L 308N {DLF,HYF,IEF}
P42416385 MSU MISS WRANGLER 62J

REMITALL EMBRACER 8E {SOD}{CHB}{HYF}
REMITALL CATALINA 24H
NIW 1Y WRANGLER 19D {SOD}{DLF,HYF,IEF}
MSU VICTORIA 9F

BMS	24																	
BHS	21	CE	BW	WW	YW	DMI	SC	SCF	MM	M&G	MCE	MCW	UDDR	TEAT	CW	FAT	REA	MARB
CHBS	43	-6.3	6.3	74	123	-0.1	1.2	11.9	22	60	1.0	126	1.0	1.0	92	0.015	0.7	0.04

- Solid young cow who is doing everything right.
- The Sooner x Gabrielle cross works well.
- AI serviced May 27, 2018 to C Double Your Miles 6077 ET, then pasture exposed June 2 to July 7, 2018, to Churchill Heads Up 410B ET, and then pasture exposed July 7 to Aug. 15, 2018 to H BK CCC SR Game Changer ET. Safe in calf.

LOT 39A
Cow

GRAND 6077 8144 DORA F20

P43891749 – Calved: March 10, 2018 – Tattoo: BE F20

CRR 5280 {DLF,HYF,IEF}
C DOUBLE YOUR MILES 6077 ET {DLF,HYF,IEF}
P43672888 C 88X NOTICE ME 1311 ET {DLF,HYF,IEF}

CRR 719 CATAPULT 109 {DLF,HYF,IEF}
CRR 435 KELLY 178 {DOD}{DLF,HYF,IEF}
NIW 98S R117 RIBEYE 88X ET {SOD}{DLF,HYF,IEF}
C NOTICE ME ET {DLF,HYF,IEF}

BR CURRENCY 8144 ET {DLF,HYF,IEF}
MF 308N DORINDA 8144 ID ET {DLF,HYF,IEF}
P43715324 MF 62J NATALIE 122L 308N {DLF,HYF,IEF}

DM BR SOONER {CHB}{DLF,HYF,IEF}
BR GABRIELLE 5082 {DLF,HYF,IEF}
REMITALL ONLINE 122L {SOD}{CHB}{DLF,HYF,IEF}
MSU MISS WRANGLER 62J

BMS	25																		
BHS	21	CE	BW	WW	YW	DMI	SC	SCF	MM	M&G	MCE	MCW	UDDR	TEAT	CW	FAT	REA	MARB	
CHBS	36	-2.2	4.6	68	105	0.3	0.9	14.7	27	61	0.2	96	1.10	1.10	85	0.025	0.66	-0.01	

- Another head turner out of Double Your Miles!
- Scott McDonald liked this one even before he realized who bred her dam!



Lot 39A – Grand 6077 8144 Dora F20

Thanks
for your attendance
and support of the
HEREFORD breed



Katie Colyer

C Double Your Miles 6077 ET – 2017 National Western Stock Show National Champion Bull



C DOUBLE YOUR MILES 6077 ET {DLF,HYF,IEF}

P43672888 – Calved: Jan. 8, 2016 – Tattoo: BE 6077

CRR 719 CATAPULT 109 {DLF,HYF,IEF}
 CRR 5280 {DLF,HYF,IEF}
 P43483006 CRR 435 KELLY 178 {DOD}{DLF,HYF,IEF}

TH 122 711 VICTOR 719T {SOD}{CHB}{DLF,HYF,IEF}
 CRR 4037 ECLIPSE 808 {DLF,HYF,IEF}
 DM BR SOONER {CHB}{DLF,HYF,IEF}
 CRR D03 KELLY 361 {DLF,IEF}

- Dam is a full sister to Miles McKee.
- His sire, 5280, is highly desirable in his own right
- His progeny consistently demonstrate his superior center body mass, power and correctness.
- Featured calves will be some of the first to sell!

NJW 98S R117 RIBEYE 88X ET {SOD}{DLF,HYF,IEF}
 C 88X NOTICE ME 1311 ET {DLF,HYF,IEF}
 43271371 C NOTICE ME ET {DLF,HYF,IEF}

SHF RIB EYE M326 R117 {SOD}{DLF,HYF,IEF}
 NJW 9126J DEW DOMINO 98S {DOD}{DLF,HYF,IEF}
 C-S PURE GOLD 98170 {SOD}{DLF,HYF,IEF}
 HH MISS ADVANCE 104A {DOD}

BMS	27																	
BIIS	22	CE	BW	WW	YW	DMI	SC	SCF	MM	M&G	MCE	MCW	UDDR	TEAT	CW	FAT	REA	MARB
CHBS	32	3.5	2.1	60	84	0.2	0.6	17.4	31	61	0.2	65	1.10	1.30	78	0.035	0.63	-0.05



Churchill Heads Up 410B ET



CHURCHILL HEADS UP 410B ET {DLF,HYF,IEF}

P43475713 – Calved: Jan. 4, 2014 – Tattoo: LE 410

UPS DOMINO 3027 {SOD}{DLF,HYF,IEF}
 CHURCHILL SENSATION 028X {SOD}{CHB}{DLF,HYF,IEF}
 43092364 CHURCHILL LADY 7202T ET {DLF,HYF,IEF}

CL 1 DOMINO 9126J 1ET {SOD}{CHB}{DLF,IEF}
 UPS MISS DIAMOND 1353 {DLF,HYF,IEF}
 GH RAMBO 279R {SOD}{CHB}{DLF,HYF,IEF}
 CL 1 DOMINETTE 301N {DLF,HYF,IEF}

GOLDEN OAK OUTCROSS 18U {SOD}{CHB}{DLF,HYF,IEF}
 CHURCHILL LADY 002X ET {DLF,HYF,IEF}
 P43092365 CHURCHILL LADY 600S ET {DLF,HYF,IEF}

GOLDEN-OAK FUSION 3S {DLF,HYF,IEF}
 GOLDEN-OAK 60D MALLORY 15M
 BR MOLER ET {CHB}{DLF,IEF}
 CHURCHILL LADY 989

BMS	28																	
BIIS	23	CE	BW	WW	YW	DMI	SC	SCF	MM	M&G	MCE	MCW	UDDR	TEAT	CW	FAT	REA	MARB
CHBS	29	5.7	1.3	48	77	-0.1	1.6	18.8	39	63	4.5	69	1.20	1.30	61	0.015	0.39	0.06

- A full brother to Churchill Red Bull 200Z.
- This may be one of the better sons of the genetic powerhouse Churchill Lady 002X.
- Offers excellent performance in an attractive package!

m f

McDonald Farm

Scott McDonald
 7791 Easter Ave. S.E.
 Grand Rapids, MI 49508
 616-446-2146
 scott@mcdonaldplumbing.com

McDonald Farm • 7791 Eastern Ave. S.E. • Grand Rapids, MI 49508 • Scott McDonald 616-446-2146 • scott@mcdonaldplumbing.com



Lot 40 – MF 13C Emily 322 704E



MF 13C EMILY 322 704E

P43936735 – Calved: Feb. 3, 2017 – Tattoo: BE 704E

CRR 719 CATAPULT 109 {DLF,HVF,IEF}
 CRR 109 CATAPULT 322 {DLF,HVF,IEF}
 P43384585 CRR 713 KELLY 0117 {DLF,HVF,IEF}

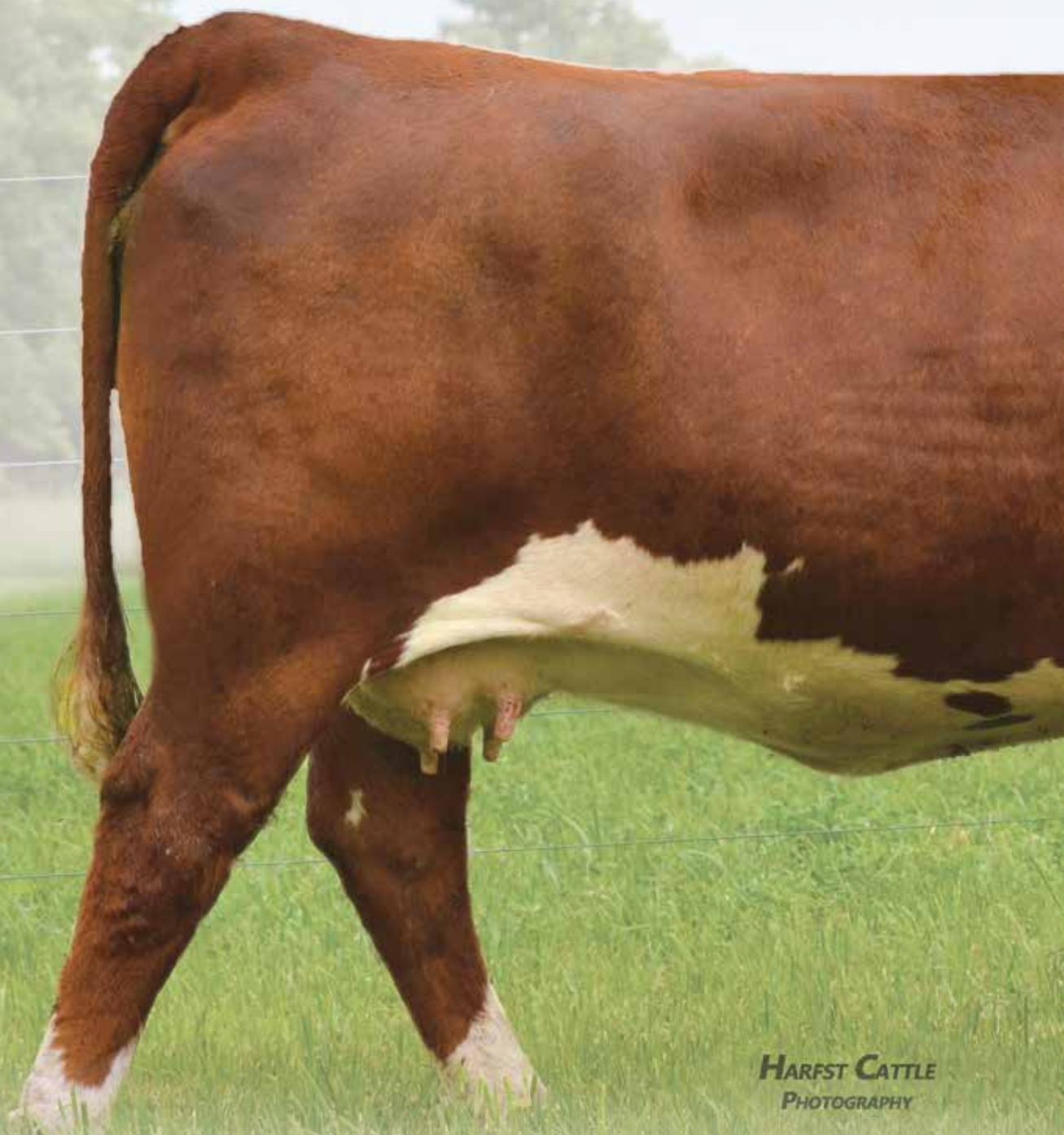
TH 122 711 VICTOR 719T {SOD}{CHB}{DLF,HVF,IEF}
 CRR 4037 ECLIPSE 808 {DLF,HVF,IEF}
 CRR 63J KODIAK 713 {DLF,IEF}
 CRR 9B KELLY 521 {DOD}{DLF,HVF,IEF}

- If you study her mother, it's pretty easy to figure out why she looks as cool as she does! This 322 daughter was in the top of the replacement pen and another one that has been a standout since day one.
- Sells safe in calf to UPS Sensation 2296 ET with a projected calving date of Jan. 1, 2019.
- Retaining one future flush at the seller's expense.

BR CURRENCY 8144 ET {DLF,HVF,IEF}
 MF 308N CAITLIN 13C ET
 P43610410 MF 62J NATALIE 122L 308N {DLF,HVF,IEF}

DM BR SOONER {CHB}{DLF,HVF,IEF}
 BR GABRIELLE 5082 {DLF,HVF,IEF}
 REMITALL ONLINE 122L {SOD}{CHB}{DLF,HVF,IEF}
 MSU MISS WRANGLER 62J

BMSIS	27																	
BIIS	23	CE	BW	WW	YW	DMI	SC	SCF	MM	M&G	MCE	MCW	UDDR	TEAT	CW	FAT	REA	MARB
CHBS	33	-3.5	3.8	66	105	0.4	0.8	17.1	24	58	1.2	112	1.10	1.20	77	0.005	0.59	0.00



HARVEST CATTLE
PHOTOGRAPHY

LOT
41
Cow

MF 308N CAITLIN 13C ET

P43610410 – Calved: March 22, 2015 – Tattoo: BE 13C

DM BR SOONER {CHB}{DLF,HVF,IEF}
BR CURRENCY 8144 ET {DLF,HVF,IEF}
42971671 BR GABRIELLE 5082 {DLF,HVF,IEF}

REMITALL ONLINE 122L {SOD}{CHB}{DLF,HVF,IEF}
DM L1 DOMINETTE 901 {DLF,HVF,IEF}
BR LANSING 3060
BR GOLDRIEL 3029 ET {DLF,HVF,IEF}

REMITALL ONLINE 122L {SOD}{CHB}{DLF,HVF,IEF}
MF 62J NATALIE 122L 308N {DLF,HVF,IEF}
P42416385 MSU MISS WRANGLER 62J

REMITALL EMBRACER 8E {SOD}{CHB}{HVF}
REMITALL CATALINA 24H
NJW 1Y WRANGLER 19D {SOD}{DLF,HVF,IEF}
MSU VICTORIA 9F

- This stunning Currency x Natalie 3-year-old is every bit as good as her picture. Cows bred just like this were fetchin' top dollar at Barber's "runaway" sale this summer. Caitlin is the kind that sets most visitors heads on a swivel. Check out her Catapult 322 bred heifer if you want an idea of what she can produce!
- Retaining her 2018 bull calf
- Sells safe in calf to Purple Joe Dirt 58A ET.
- Terms available sale day

BMS	23																	
BIIS	20	CE	BW	WW	YW	DMI	SC	SCF	MM	M&G	MCE	MCW	UDDR	TEAT	CW	FAT	REA	MARB
CHBS	40	-2.7	4.4	69	113	-0.1	1.1	11.9	23	57	2.9	114	1.10	1.20	86	0.025	0.59	0.07



MF 62J Natalie 122L 308N – Dam of Lot 41



Lot 42 – MF 486 Stacie Mason 3F ET



MF 486 STACIE MASON 3F ET

P43935120 – Calved: March 2, 2018 – Tattoo: BE 3F

CRR ABOUT TIME 743 (SOD)(DLF,HVF,IEF)
 CHAC MASON 2214 (DLF,HVF,IEF)
 P43303660 BKB 31 GRACE 7100 (DLF,HVF,IEF)

THM DURANGO 4037 (SOD)(DLF,HVF,IEF)
 CRR D03 CASSIE 206 (DLF,HVF,IEF)
 CCLC GKB PURE GOLD 31
 L STAR GOLDIE P153

NJW 73S W18 HOMEGROWN 8Y ET (DLF,HVF,IEF)
 DM 4128 8Y STACIE 486 ET (DLF,HVF,IEF)
 P43778207 DM BR STACIE 4128 ET

SHF WONDER M326 W18 ET (CHB)(DLF,HVF,IEF)
 NJW P606 72N DAYDREAM 73S (DLF,HVF,IEF)
 REMITALL ONLINE 122L (SOD)(CHB)(DLF,HVF,IEF)
 DM L1 DOMINETTE 901 (DLF,HVF,IEF)

- Show heifer alert! Big time talent in this Stacie x Mason ET heifer calf. This girl's phenotype just blows you away! Her mom is the Stacie 486 cow that we introduced her last year, selling two flushes for \$16,000. We then sold one-half of her through the Denver sale to DeLHawk. What a beautiful group of heifer calves she blessed us with this year! The maternal value of the Stacie cow is unprecedented and that should only add to Stacie Mason's worth once her show career is over!
- Terms to be announced

BMS	23																		
BIIS	20	CE	BW	WW	YW	DMI	SC	SCF	MM	M&G	MCE	MCW	UDDR	TEAT	CW	FAT	REA	MARB	
CHBS	30	-2.5	4.5	57	92	0.3	1.0	13.9	31	60	0.1	111	1.10	1.00	67	-0.005	0.48	0.06	



DM 4128 8Y Stacie 486 ET – Dam of Lot 42



Lot 43 – MF 1302 Fanny 6105 1805 ET

LOT 43
COW

MF 1302 FANNY 6105 1805 ET

P43937616 – Calved: April 5, 2018 – Tattoo: BE 1805

CRR 5280 {DLF,HVF,IEF}
C SPECIAL EDITION 6105 ET {DLF,HVF,IEF}
43672913 C 88X NOTICE ME 1311 ET {DLF,HVF,IEF}

CRR 719 CATAPULT 109 {DLF,HVF,IEF}
CRR 435 KELLY 178 {DOB}{DLF,HVF,IEF}
NJW 98S R117 RIBEYE 88X ET {SOD}{DLF,HVF,IEF}
C NOTICE ME ET {DLF,HVF,IEF}

CRR ABOUT TIME 743 {SOD}{DLF,HVF,IEF}
MF 308N ADDY 1302 ET {DLF,HVF,IEF}
P43403114 MF 62J NATALIE 122L 308N {DLF,HVF,IEF}

THM DURANGO 4037 {SOD}{DLF,HVF,IEF}
CRR D03 CASSIE 206 {DLF,HVF,IEF}
REMITALL ONLINE 122L {SOD}{CHB}{DLF,HVF,IEF}
MSU MISS WRANGLER 62J

BMS	28																	
BIIS	24	CE	BW	WW	YW	DMI	SC	SCF	MM	M&G	MCE	MCW	UDDR	TEAT	CW	FAT	REA	MARB
CHBS	35	1.2	3.8	62	96	0.1	1.2	17.3	25	57	1.3	100	1.15	1.20	78	0.000	0.70	0.10

• Wow, what a show prospect! Fanny is a member of the most consistent flush of heifer calves we've had in quite some time. This flush was reserved when we sold her mom, Addy 1302, to Rhett Lowderman in our first online sale. An Addy 1302 daughter fetched \$30,000 at the Illini Classic and was a division winner in Louisville this past fall. This Special Edition daughter has big time earning potential!

LOT 44
COW

MF FLANNERY FACE 6026D 13F ET

P43935130 – Calved: April 20, 2018 – Tattoo: BE 13F

C STOCKMAN 2059 ET {CHB}{DLF,HVF,IEF}
B&C STOCK OPTION 6026D ET {DLF,HVF,IEF}
43719224 B&C MISS TOP GUN 2031Z 1ET {DLF,HVF,IEF}

NJW 98S R117 RIBEYE 88X ET {SOD}{DLF,HVF,IEF}
C NOTICE ME ET {DLF,HVF,IEF}
GH ADAMS TOP GUN ET 516T {DLF,HVF,IEF}
B&C MS CHRISTI 27031 {DLF,IEF}

CHAC MASON 2214 {DLF,HVF,IEF}
R/L LCC MISS POKER FACE 5C ET {DLF,HVF,IEF}
P43616064 SRH MISS KITTY 1001 ET {DLF,HVF,IEF}

CRR ABOUT TIME 743 {SOD}{DLF,HVF,IEF}
GKB 31 GRACE 7100 {DLF,HVF,IEF}
UPS TCC NITRO 1ET {SOD}{CHB}{DLF,HVF,IEF}
4C 511 DAYTONA MISS 661 {DLF,HVF,IEF}

BMS	19																	
BIIS	17	CE	BW	WW	YW	DMI	SC	SCF	MM	M&G	MCE	MCW	UDDR	TEAT	CW	FAT	REA	MARB
CHBS	31	-5.2	6.1	56	88	0.1	0.8	10.1	24	52	-2.4	108	1.00	0.95	67	-0.02	0.57	0.05

• Flannery is the result of mating two of the most successful show winners in recent times. Poker Face, her dam, was a Denver Champion and 7-time National Champion. Stock Option was last year's Supreme Champion Bull in Denver. We were blessed with five Poker Face daughters and wanted to share one of them in this sale. This princess is fitting of her royal heritage.



Lot 44 – MF Flannery Face 6026D 13F ET



Lot 45A – MF 90D Flora Belle 801F

LOT
45
Cow

LBB GNA 26U CRISTY 90D

P43712704 – Calved: March 26, 2016 – Tattoo: LE 90D

NJW 1Y WRANGLER 19D {SOD}{DLF,HVF,IEF}
AH JDH CRACKER JACK 26U ET {DLF,HVF,IEF}
P42924297 CRR D03 VIOLET 349 {DLF,HVF,IEF}

CIRCLE-D WRANGLER 832W {SOD}{CHB}{HYF}
NJW FROSTY 1Y
SHF INTERSTATE 20X D03 {SOD}{DLF,HVF,IEF}
KJ 2410 VIOLET 392F

KJ C&L J119 VICTORY 258S ET {SOD}
LBB 43U VENDELA 77Z {DOD}
P43280693 NJW 91N ECLIPSE GAL 43U

KJ 520E VICTOR 417L {SOD}
SHF INTERSTATE D03 J119
STAR 67J ECLIPSE 135S {DLF,HVF,IEF}
NJW 11L 20J MONA 91N

BMS	20																	
BIIS	17	CE	BW	WW	YW	DMI	SC	SCF	MM	M&G	MCE	MCW	UDDR	TEAT	CW	FAT	REA	MARB
CHBS	26	2.3	2.9	53	79	0.3	0.6	11.6	25	52	0.7	107	1.40	1.30	65	0.035	0.36	0.10

- This Lamb bred Cracker Jack 2-year-old is super sweet fronted and feminine with loads of milk!
- Dark cherry red and the easy keepin' kind, this youngster sells bred AI May 10, 2018, to B&C Stock Option 6026D ET, then pasture exposed May 12 to July 4, 2018, to NPH New Horizon ZZ.

LOT
45A
Cow

MF 90D FLORA BELLE 801F

P43933101 – Calved: Jan. 1, 2018 – Tattoo: BE 801F

BAR S LHF 028 240 {DLF,HVF,IEF}
BR BELLE AIR 6011 {DLF,HVF,IEF}
43724674 BR BELLE 4082 ET {DLF,HVF,IEF}

CHURCHILL SENSATION 028X {SOD}{CHB}{DLF,HVF,IEF}
CHURCHILL LADY 078X {DLF,HVF,IEF}
GOLDEN OAK OUTCROSS 18U {SOD}{CHB}{DLF,HVF,IEF}
BR CSF BRIELLE 8052 ET {DLF,HVF,IEF}

AH JDH CRACKER JACK 26U ET {DLF,HVF,IEF}
LBB GNA 26U CRISTY 90D
P43712704 LBB 43U VENDELA 77Z {DOD}

NJW 1Y WRANGLER 19D {SOD}{DLF,HVF,IEF}
CRR D03 VIOLET 349 {DLF,HVF,IEF}
KJ C&L J119 VICTORY 258S ET {SOD}
NJW 91N ECLIPSE GAL 43U

BMS	22																	
BIIS	20	CE	BW	WW	YW	DMI	SC	SCF	MM	M&G	MCE	MCW	UDDR	TEAT	CW	FAT	REA	MARB
CHBS	29	0.8	2.9	59	92	0.3	1.3	13.2	28	57	1.9	105	1.30	1.25	69	0.05	0.52	0.17

- This daughter of Denver Champion Belle Aire is a real eye catcher! Dark red like her mother, really nice fronted and has an attractive profile. As a bonus, she has a sweet, kid friendly disposition.



HARFST CATTLE
PHOTOGRAPHY

Lot 45 – LBB GNA 26U Cristy 90D



Lot 46 – MF 1306 Freddie Miles 805F

LOT 46
Cow

MF 1306 FREDDIE MILES 805F

P43933109 – Calved: Feb. 2, 2018 – Tattoo: BE 805F

CRR 5280 {DLF,HVF,IEF}
C DOUBLE YOUR MILES 6077 ET {DLF,HVF,IEF}
P43672888 C 88X NOTICE ME 1311 ET {DLF,HVF,IEF}

CRR 719 CATAPULT 109 {DLF,HVF,IEF}
CRR 435 KELLY 178 {DOD}{DLF,HVF,IEF}
NJW 98S R117 RIBEYE 88X ET {SOD}{DLF,HVF,IEF}
C NOTICE ME ET {DLF,HVF,IEF}

NJW 73S M326 TRUST 100W ET {SOD}{CHB}{DLF,HVF,IEF}
MF 308N ANNETTE 1306 ET
P43403116 MF 62J NATALIE 122L 308N {DLF,HVF,IEF}

KCF BENNETT 3008 M326 {SOD}{DLF,HVF,IEF}
NJW P606 72N DAYDREAM 73S {DLF,HVF,IEF}
REMITALL ONLINE 122L {SOD}{CHB}{DLF,HVF,IEF}
MSU MISS WRANGLER 62J

BMS	28																	
BIIS	23	CE	BW	WW	YW	DMI	SC	SCF	MM	M&G	MCE	MCW	UDDR	TEAT	CW	FAT	REA	MARB
CHBS	37	1.3	3.0	63	99	0.1	1.0	16.7	29	61	4.2	103	1.15	1.25	82	0.015	0.66	0.09

- Really moderate, cool fronted, fancy made 6077 daughter out of the Trust x Natalie cow.

LOT 47
Cow

MF 8Y FRANCES MILES 807F

P43933111 – Calved: Feb. 4, 2018 – Tattoo: BE 807F

CRR 5280 {DLF,HVF,IEF}
C DOUBLE YOUR MILES 6077 ET {DLF,HVF,IEF}
P43672888 C 88X NOTICE ME 1311 ET {DLF,HVF,IEF}

CRR 719 CATAPULT 109 {DLF,HVF,IEF}
CRR 435 KELLY 178 {DOD}{DLF,HVF,IEF}
NJW 98S R117 RIBEYE 88X ET {SOD}{DLF,HVF,IEF}
C NOTICE ME ET {DLF,HVF,IEF}

REMITALL ONLINE 122L {SOD}{CHB}{DLF,HVF,IEF}
LCC 122L LADY A 8Y ET
P43187911 HH MISS ADVANCE 232M {DLF,HVF,IEF}

REMITALL EMBRACER 8E {SOD}{CHB}{HYF}
REMITALL CATALINA 24H
HH ADVANCE 836H {SOD}{DLF,HVF,IEC}
HH MS ADV 898H 1ET {DOD}

BMS	21																	
BIIS	19	CE	BW	WW	YW	DMI	SC	SCF	MM	M&G	MCE	MCW	UDDR	TEAT	CW	FAT	REA	MARB
CHBS	32	2.4	3.3	58	90	0.2	0.9	12.4	26	55	3.2	81	1.10	1.25	75	0.025	0.49	0.08

- Francis is a Denver Champion 6077 daughter that's one of those calves you just keep wanting to go back and find. She is so good in her hip and hind leg and very well balanced from end to end. Her mom is an Online daughter that Billy W. said was the favorite 2-year-old he ever calved out at Lowderman's. Another really nice dispositioned, dark red heifer with a lot of future.



Lot 47 – MF 8Y Frances Miles 807F



Lot 48 – MF 5C Felicia Tide 806F



Lot 49 – MF D216 Faith 2D 809F



CLF GCC Miss D D216 – Dam of Lot 49



Lot 50 – MF 104Y Fantaysha 1009 1F ET



MF 914W About Yasmine 104Y – Dam of Lot 50

LOT 48
Cow

MF 5C FELICIA TIDE 806F

43935115 – Calved: Feb. 3, 2018 – Tattoo: BE 806F

CHURCHILL SENSATION 028X {SOD}{CHB}{DLF,HYF,IEF}
CRR 028X ROLL TIDE 612 {DLF,HYF,IEF}
43693995 CRR 83Y AMBER 418 {DLF,HYF,IEF}

UPS DOMINO 3027 {SOD}{DLF,HYF,IEF}
CHURCHILL LADY 7202 ET {DLF,HYF,IEF}
NJW 98S 100W HANDSHAKE 83Y {CHB}{DLF,HYF,IEF}
CRR 021 AMBER 2102

RST TIMES A WASTIN 0124 {CHB}{DLF,HYF,IEF}
MF DF R505 CARLY D124 5C ET {DLF,HYF,IEF}
P43610403 MF 3001 REBECCA D03 R505 ET {DLF,IEF}

CRR ABOUT TIME 743 {SOD}{DLF,HYF,IEF}
RST MS 1000 BLAZER 2029 {DOD}{DLF,HYF,IEF}
SHF INTERSTATE 20X D03 {SOD}{DLF,HYF,IEF}
BOYD FASINATION 3001

BMSI	26																	
BIIS	23	CE	BW	WW	YW	DMI	SC	SCF	MM	M&G	MCE	MCW	UDDR	TEAT	CW	FAT	REA	MARB
CHBS	32	-0.1	3	61	99	0.3	1.5	16.9	28	59	1.6	95	1.10	1.10	71	-0.015	0.47	0.10

- This bottle-fed beauty is so kid broke! Felicia Tide just gets better every day as she catches up with her stall mates. Roll Tide will add some maternal value to this dehorned girl.

LOT 49
Cow

MF D216 FAITH 2D 809F

P43933117 – Calved: March 15, 2018 – Tattoo: BE 809F

TH 122 711 VICTOR 719T {SOD}{CHB}{DLF,HYF,IEF}
NPH 719T NEW HORIZON 22 {DLF,HYF,IEF}
P43317600 MSU KEEPSAKE 21X ET {DLF,HYF,IEF}

DRF JWR PRINCE VICTOR 711 {SOD}
KBCR 19D DOMINETTE 122 {DLF,IEF}
REMITALL ONLINE 122L {SOD}{CHB}{DLF,HYF,IEF}
MSU KEEPSAKE 32N {DLF,HYF,IEF}

NJW 73S M326 TRUST 100W ET {SOD}{CHB}{DLF,HYF,IEF}
CLF GCC MISS D D216
P43665558 GOBLE LADY LUCK 329Y ET

KCF BENNETT 3008 M326 {SOD}{DLF,HYF,IEF}
NJW P606 72N DAYDREAM 73S {DLF,HYF,IEF}
RVP STAR 533P CAN-AM ET 57U {DLF,HYF,IEF}
LAKE LADY 225U {DLF,HYF,IEF}

BMSI	28																	
BIIS	24	CE	BW	WW	YW	DMI	SC	SCF	MM	M&G	MCE	MCW	UDDR	TEAT	CW	FAT	REA	MARB
CHBS	36	1.7	2.5	61	97	0.1	1.1	17.7	26	57	1.6	111	1.20	1.15	78	-0.015	0.62	0.13

- "You gotta have Faith!" Her mom is maybe the best uddered 2-year-old we have calved out. This really complete, super numbered sweetie should prove to be the front pasture kind, just like momma!

LOT 50
Cow

MF 104Y FANTAYSHA 1009 1F ET

P43935121 – Calved: Feb. 27, 2018 – Tattoo: BE 1F

CH ENUFF PROPHET 2913 {DLF,HYF,IEF}
DELHAWK KAHUNA 1009 ET {DLF,HYF,IEF}
43104099 MCR PPF MISS GOLD DOM 206 ET {DLF,HYF,IEF}

M&M TUFF ENUFF 618
CH LADY PROPHET 0220
C-S PURE GOLD 98170 {SOD}{DLF,HYF,IEF}
CJH 386 MISS 035 {DLF,HYF,IEF}

CRR ABOUT TIME 743 {SOD}{DLF,HYF,IEF}
MF 914W ABOUT YASMINE 104Y {DLF,HYF,IEF}
P43212822 PCR MF LACEY DUTCHESS 914W {DLF,HYF,IEF}

THM DURANGO 4037 {SOD}{DLF,HYF,IEF}
CRR D03 CASSIE 206 {DLF,HYF,IEF}
HCC LEGACY S01 ET {DLF,HYF,IEF}
PCR DUTCHESS ANNE 657S {DOD}{DLF,HYF,IEF}

BMSI	23																	
BIIS	19	CE	BW	WW	YW	DMI	SC	SCF	MM	M&G	MCE	MCW	UDDR	TEAT	CW	FAT	REA	MARB
CHBS	33	-5.0	4.6	62	99	0.5	0.8	12.8	29	60	-1.7	120	1.15	1.00	80	-0.005	0.74	0.03

- This polled end of February Kahuna x Yasmine is really green but has all the running gear. Very angular in her shoulder and extremely lengthy in her neck. As this one feeds she could become really competitive. A maternal sister was our Denver HYFA foundation heifer this past January.



Lot 51A – MF 4183 Frankie Miles 803F



BF 8Y HOMEMAID 4183

P43554368 – Calved: Sept. 20, 2014 – Tattoo: BE 4183

SHF WONDER M326 W18 ET (CHB){DLF,HYF,IEF} KCF BENNETT 3008 M326 (SDD){DLF,HYF,IEF}
 NJW 73S W18 HOMEGROWN 8Y ET {DLF,HYF,IEF} SHF GOVERNESS 2366 L37 {DLF,HYF,IEF}
 P43214852 NJW P606 72N DAYDREAM 73S {DLF,HYF,IEF} PW VICTOR BOOMER P606 (SDD){DLF,HYF,IEF}
 NJW 94J DEW 72N {DLF,HYF,IEF} JA L1 DOMINO 9213 (SDD){DLF,IEF}
 KB L1 DOMINO 321 MONTANA MISS 803 1ET
 BF 321 COUNTESS 5195 HH ADVANCE 9002Y
 42660049 BF MS 9002 ADV 9104 BF MS SAVANNAH 445

BMS	22																	
BIIS	19	CE	BW	WW	YW	DMI	SC	SCF	MM	M&G	MCE	MCW	UDDR	TEAT	CW	FAT	REA	MARB
CHBS	30	1.1	3.7	52	85	0.1	0.7	13.6	31	57	4.2	90	1.10	1.00	65	0.015	0.38	0.07

- This Burns bred, youthful 4-year-old can really cook em! These super milking 8Y daughters are topping sales across the country and really sought after and it's easy to see why! Our Stacie cow, whose flushes topped the sale last year, is a paternal sister to 4183. Please take a moment to admire the heifer calf alongside of her.
- AI serviced March 23, 2018, to K Rustic 711 ET, our exciting bull calf, then pasture exposed April 4 to May 4, 2018, to Purple Joe Dirt 58A ET.



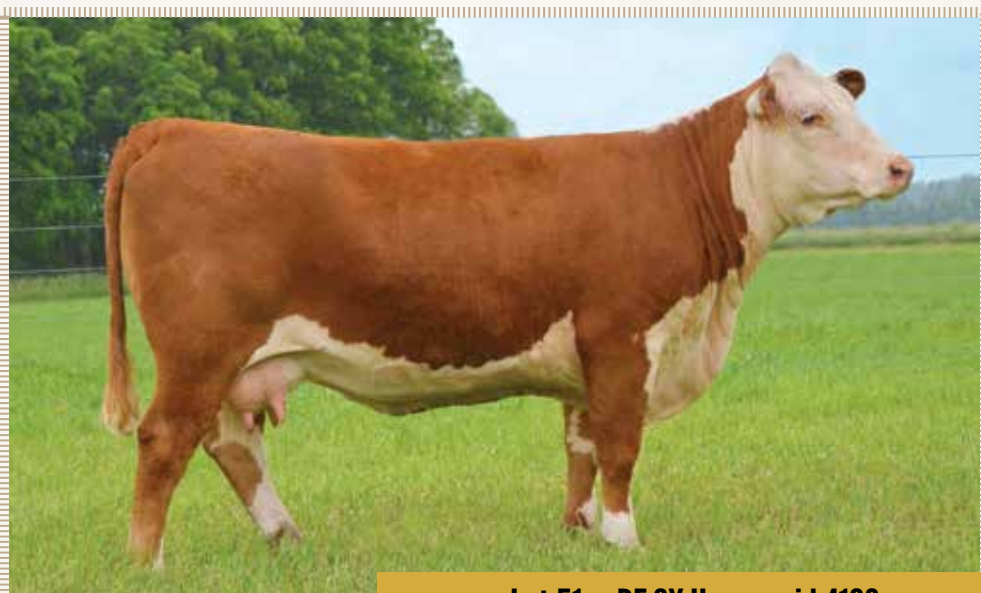
MF 4183 FRANKIE MILES 803F

P43933103 – Calved: Jan. 2, 2018 – Tattoo: BE 803F

CRR 5280 (DLF,HYF,IEF) CRR 719 CATAPULT 109 (DLF,HYF,IEF)
 C DOUBLE YOUR MILES 6077 ET {DLF,HYF,IEF} CRR 435 KELLY 178 (DOB){DLF,HYF,IEF}
 P43672888 C 88X NOTICE ME 1311 ET {DLF,HYF,IEF} NJW 98S R117 RIBEYE 88X ET (SDD){DLF,HYF,IEF}
 NJW 73S W18 HOMEGROWN 8Y ET {DLF,HYF,IEF} SHF WONDER M326 W18 ET (CHB){DLF,HYF,IEF}
 BF 8Y HOMEMAID 4183 NJW P606 72N DAYDREAM 73S {DLF,HYF,IEF}
 P43554368 BF 321 COUNTESS 5195 KB L1 DOMINO 321
 BF MS 9002 ADV 9104

BMS	24																	
BIIS	21	CE	BW	WW	YW	DMI	SC	SCF	MM	M&G	MCE	MCW	UDDR	TEAT	CW	FAT	REA	MARB
CHBS	31	2.3	2.9	56	84	0.1	0.7	15.5	31	59	2.2	78	1.10	1.15	71	0.025	0.51	0.01

- A powerhouse heifer calf and quite simply one of the top cow prospect heifer calves that I can remember selling. This deep bodied, super stout rip is impressive from the ground up! Her sire 6077 was Denver Champion as a calf. This easy keeper is the kind to really move a program forward.



Lot 51 – BF 8Y Homemaide 4183



Lot 52 – MF 8Y Elsie 492B 706E



LCC 122L Lady A 8Y ET – Dam of Lots 50 and 55



MF 8Y ELSIE 492B 706E

43936734 – Calved: Feb. 7, 2017 – Tattoo: BE 706E

GOLDEN OAK OUTCROSS 18U {SOD}{CHB}{DLF,HYF,IEF} GOLDEN-OAK FUSION 3S {DLF,HYF,IEF}
 CHEZ AA NEXT LEVEL ET {DLF,HYF,IEF} GOLDEN-OAK 60D MALLORY 15M
 P43527067 R SWEET RED WINE 039 {DLF,HYF,IEF} MSU TCF REVOLUTION 4R {SOD}{CHB}{DLF,HYF,IEF}
 R MISS WRANGLER 207 {DLF,HYF,IEF}

REMITALL ONLINE 122L {SOD}{CHB}{DLF,HYF,IEF} REMITALL EMBRACER 8E {SOD}{CHB}{HYF}
 LCC 122L LADY A 8Y ET REMITALL CATALINA 24H
 P43187911 HH MISS ADVANCE 232M {DLF,HYF,IEF} HH ADVANCE 836H {SOD}{DLF,HYF,IEF}
 HH MS ADV 898H 1ET {DOD}

BMSIS	22																	
BIIS	20	CE	BW	WW	YW	DMI	SC	SCF	MM	M&G	MCE	MCW	UDDR	TEAT	CW	FAT	REA	MARB
CHBS	32	2.4	4.2	61	101	0.5	1.4	12.7	23	53	6.1	101	1.20	1.20	76	0.025	0.49	0.17

- Another deep, broody, powerfully constructed daughter of the heavy milking Lowderman Online cow. She looks very different than most of the Next Levels that you see.
- This dehorned heifer sells safe in calf to Purple Joe Dirt 58A ET. Observed bred April 18, 2018.



MF 4183 ETHEL 3053 610F

43813432 – Calved: Sept. 15, 2016 – Tattoo: BE 610D

CL 1 DOMINO 955W {SOD}{CHB}{DLF,HYF,IEF} CL 1 DOMINO 637S 1ET
 H L1 DOMINO 3053 ET {CHB}{DLF,HYF,IEF} CL 1 DOMINETTE 5152R {DLF,HYF,IEF}
 43389393 HH MISS ADVANCE 5139R ET {DLF,HYF,IEF} CL 1 DOMINO 2136M {DLF,IEF}
 HH MS ADVANCE 8037H

NJW 73S W18 HOMEGROWN 8Y ET {DLF,HYF,IEF} SHF WONDER M326 W18 ET {CHB}{DLF,HYF,IEF}
 BF 8Y HOMEAID 4183 NJW P606 72N DAYDREAM 73S {DLF,HYF,IEF}
 P43554368 BF 321 COUNTESS 5195 KB L1 DOMINO 321
 BF MS 9002 ADV 9104

BMSIS	22																	
BIIS	19	CE	BW	WW	YW	DMI	SC	SCF	MM	M&G	MCE	MCW	UDDR	TEAT	CW	FAT	REA	MARB
CHBS	31	3.8	2.7	55	84	0.2	0.7	12.7	32	59	1.1	95	1.10	1.10	73	0.015	0.52	0.03

- Really long bodied, broody cow prospect out of the 8Y cow/milk factory. 3053 is a son of the record selling 5139 cow. Another son of 5139, owned by Sierra Ranch, will do big things this year!
- This dehorned 3053 daughter sells safe in calf to Purple Joe Dirt 58A ET and observed bred April 10, 2018.



Lot 53 – MF 4183 Ethel 3053 610F



Lot 54 – MF 13Y Emma 2Z 709E

LOT 54 Cow

MF 13Y EMMA 2Z 709E

P43827759 – Calved: May 2, 2017 – Tattoo: BE 709E

TH 122 711 VICTOR 719T {SOD}{CHB}{DLF,HYF,IEF} DRF JWR PRINCE VICTOR 711 {SOD}
 NPH 719T NEW HORIZON 2Z {DLF,HYF,IEF} KBCR 19D DOMINETTE 122 {DLF,IEF}
 P43317600 MSU KEEPSAKE 21X ET {DLF,HYF,IEF} REMITALL ONLINE 122L {SOD}{CHB}{DLF,HYF,IEF}
 MSU KEEPSAKE 32N {DLF,HYF,IEF}

GOLDEN OAK OUTCROSS 18U {SOD}{CHB}{DLF,HYF,IEF} GOLDEN-OAK FUSION 3S {DLF,HYF,IEF}
 MF R505 YSABEL 18U 13Y ET GOLDEN-OAK 60D MALLORY 15M
 P43295090 MF 3001 REBECCA D03 R505 ET {DLF,IEF} SHF INTERSTATE 20X D03 {SOD}{DLF,HYF,IEF}
 BOYD FASINATION 3001

BMS	26																	
BIIS	22	CE	BW	WW	YW	DMI	SC	SCF	MM	M&G	MCE	MCW	UDDR	TEAT	CW	FAT	REA	MARB
CHBS	32	1.0	4.4	65	102	0.3	1.2	16.8	22	55	1.8	102	1.20	1.20	72	-0.005	0.53	0.06

- What a striking bred heifer! We had the misfortune of losing Emma's amazing Outcross mama when she was just two months old, so she became that special bottle-fed project. Sweet to be around as you would imagine. Good money was made on a full sister who was purchased from us in a prior sale then went on to win the Kentucky Beef Expo
- Sells safe to Purple Joe Dirt 58A ET with an estimated calving date of Feb. 12, 2019.

McDonald Farm was truly humbled to have the opportunity to donate to the Hereford Youth Foundation of America (HYFA). MF 104Y Eve 109 19E ET is a very special young female generating \$80,000 for the HYFA Foundation.



MF 104Y Eve 109 19E ET – HYFA Foundation Female in Denver



Lot 55A – MF 1D Farley 6011 804F

LOT 55A Bull

MF 1D FARLEY 6011 804F

P43933107 – Calved: Jan. 2, 2018 – Tattoo: BE 804F

BAR S LHF 028 240 {DLF,HYF,IEF}
BR BELLE AIR 6011 {DLF,HYF,IEF}
43724674 BR BELLE 4082 ET {DLF,HYF,IEF}

CHURCHILL SENSATION 028X {SOD}{CHB}{DLF,HYF,IEF}
CHURCHILL LADY 078X {DLF,HYF,IEF}
GOLDEN OAK OUTCROSS 18U {SOD}{CHB}{DLF,HYF,IEF}
BR CSF BRIELLE 8052 ET {DLF,HYF,IEF}

CRR ABOUT TIME 743 {SOD}{DLF,HYF,IEF}
HC DAIQUIRI 1D ET
P43698929 HARFST GIN 15U {DLF,HYF,IEF}

THM DURANGO 4037 {SOD}{DLF,HYF,IEF}
CRR D03 CASSIE 206 {DLF,HYF,IEF}
PURPLE TONIC 10M
JTH LADY PLUS 44N

BMIS	26																	
BIIS	22	CE	BW	WW	YW	DMI	SC	SCF	MM	M&G	MCE	MCW	UDDR	TEAT	CW	FAT	REA	MARB
CHBS	29	0.2	2.5	55	87	0.1	1.3	16.9	26	53	1.1	97	1.25	1.20	64	0.015	0.5	0.12

- Farley is a very intriguing, dark cherry red all over son of Denver Supreme Champion Belle Aire. This very deep sided, complete calf could be used on heifers as he had a birth weight of only 65 lb.! Lots of maternal value in his pedigree as well!



Lot 55 – HC Daiquiri 1D ET

LOT 55 Cow

HC DAIQUIRI 1D ET

P43698929 – Calved: March 1, 2016 – Tattoo: LE 1D/RE HC

THM DURANGO 4037 {SOD}{DLF,HYF,IEF}
CRR ABOUT TIME 743 {SOD}{DLF,HYF,IEF}
P42797564 CRR D03 CASSIE 206 {DLF,HYF,IEF}

CS 800MER 29F {SOD}{CHB}{DLF,HYF,IEF}
THM 7085 VICTRA 9036 {DLF,HYF,IEF}
SHF INTERSTATE 20X D03 {SOD}{DLF,HYF,IEF}
CRR 475E CASSIE 838

PURPLE TONIC 10M
HARFST GIN 15U {DLF,HYF,IEF}
P42954554 JTH LADY PLUS 44N

NJW 1Y WRANGLER 19D {SOD}{DLF,HYF,IEF}
JH MISS MADALYNNE
JTH ADVANCE PLUS 29J
JTH FIRE WATER 13K

BMIS	27																	
BIIS	22	CE	BW	WW	YW	DMI	SC	SCF	MM	M&G	MCE	MCW	UDDR	TEAT	CW	FAT	REA	MARB
CHBS	26	1.0	2.2	46	69	-0.1	0.5	19.1	21	44	-0.9	90	1.30	1.20	54	-0.035	0.33	0.01

- Gorgeously made, heavy milking 2-year-old full sister to the Harfst/Garnhart Last Call bull. "Wendy" has such a special sweet attitude and is so fun to be around. She really raised a lunker of a bull calf in her first effort.
- This really low birth weight beauty sells safe in calf to our Denver Supreme Champion, B&C Stock Option 6026D, with an estimated calving date of Jan. 1, 2019.



Lot 56 – MF 308N Eunice R117 1705 ET

LOT 56 Cow

MF 308N EUNICE R117 1705 ET

P43826509 – Calved: April 6, 2017 – Tattoo: BE 1705

KCF BENNETT 3008 M326 {SOD}{DLF,HYF,IEF}
SHF RIB EYE M326 R117 {SOD}{DLF,HYF,IEF}
P42584003 HVH MISS HUDSON 83K 8M

RRH MR FELT 3008 {SOD}{DLF,HYF,IEF}
KCF MISS 459 F284
MSU MF HUDSON 19H {SOD}{DLF,HYF,IEF}
SUN VINDY MISS 83K

REMITALL ONLINE 122L {SOD}{CHB}{DLF,HYF,IEF}
MF 62J NATALIE 122L 308N {DLF,HYF,IEF}
P42416385 MSU MISS WRANGLER 62J

REMITALL EMBRACER 8E {SOD}{CHB}{HYF}
REMITALL CATALINA 24H
NJW 1Y WRANGLER 19D {SOD}{DLF,HYF,IEF}
MSU VICTORIA 9F

BMIS	27																	
BIIS	24	CE	BW	WW	YW	DMI	SC	SCF	MM	M&G	MCE	MCW	UDDR	TEAT	CW	FAT	REA	MARB
CHBS	35	4.5	2.8	58	95	-0.1	1.4	16.9	22	51	8.1	95	1.20	1.30	71	-0.005	0.38	0.25

- The R117s make super cows and that is why we flushed Natalie to him.
- Eunice sells safe in calf to Denver Supreme Champion BR Belle Aire 6011 with an estimated calving date of Jan. 22, 2019. Should prove to be an exciting mating!



Lot 57 – MF 308N Courtney 88X 1501 ET



MF 308N COURTNEY 88X 1501 ET

P43612999 – Calved: April 1, 2015 – Tattoo: BE 1501

SHF RIB EYE M326 R117 {SOD}{DLF,HVF,IEF}
 NJW 98S R117 RIBEYE 88X ET {SOD}{DLF,HVF,IEF}
 43094146 NJW 9126J DEW DOMINO 98S {DOD}{DLF,HVF,IEF}

KCF BENNETT 3008 M326 {SOD}{DLF,HVF,IEF}
 HVH MISS HUDSON 83K 8M
 CL 1 DOMINO 9126J 1ET {SOD}{CHB}{DLF,IEF}
 NJW 57G 74G DEW 5M {DLF,HVF,IEF}

REMITALL ONLINE 122L {SOD}{CHB}{DLF,HVF,IEF}
 MF 62J NATALIE 122L 308N {DLF,HVF,IEF}
 P42416385 MSU MISS WRANGLER 62J

REMITALL EMBRACER 8E {SOD}{CHB}{HYF}
 REMITALL CATALINA 24H
 NJW 1Y WRANGLER 19D {SOD}{DLF,HVF,IEF}
 MSU VICTORIA 9F

BMS	22																	
BIIS	19	CE	BW	WW	YW	DMI	SC	SCF	MM	M&G	MCE	MCW	UDDR	TEAT	CW	FAT	REA	MARB
CHBS	34	3.6	2.6	57	93	-0.1	0.9	11.4	28	57	7.3	80	1.20	1.30	68	-0.005	0.42	0.28

- Powerfully constructed 88X x Natalie 3-year-old that is a favorite of many visitors. The 88Xs make super cows and this one is no exception. Natalie's offspring have sold into over 40 herds across the country and are always well received.
- She sells safe in calf to Joe Dirt with an estimated calving date of Jan. 28, 2019. What an exciting mating that could prove to be! A whole lot of guesswork has been eliminated here.



MF 1501 FALLON 2Z 810F

P43933119 – Calved: March 30, 2018 – Tattoo: BE 810F

TH 122 71I VICTOR 719T {SOD}{CHB}{DLF,HVF,IEF}
 NPH 719T NEW HORIZON 2Z {DLF,HVF,IEF}
 P43317600 MSU KEEPSAKE 21X ET {DLF,HVF,IEF}

DRF JWR PRINCE VICTOR 71I {SOD}
 KBCR 19D DOMINETTE 122 {DLF,IEF}
 REMITALL ONLINE 122L {SOD}{CHB}{DLF,HVF,IEF}
 MSU KEEPSAKE 32N {DLF,HVF,IEF}

NJW 98S R117 RIBEYE 88X ET {SOD}{DLF,HVF,IEF}
 MF 308N COURTNEY 88X 1501 ET
 P43612999 MF 62J NATALIE 122L 308N {DLF,HVF,IEF}

SHF RIB EYE M326 R117 {SOD}{DLF,HVF,IEF}
 NJW 9126J DEW DOMINO 98S {DOD}{DLF,HVF,IEF}
 REMITALL ONLINE 122L {SOD}{CHB}{DLF,HVF,IEF}
 MSU MISS WRANGLER 62J

BMS	25																	
BIIS	22	CE	BW	WW	YW	DMI	SC	SCF	MM	M&G	MCE	MCW	UDDR	TEAT	CW	FAT	REA	MARB
CHBS	33	4.7	2.4	62	97	0.2	1	14.7	27	58	3.9	86	1.20	1.25	71	-0.010	0.49	0.19

- It will be fun to watch this later maturing, really green cow prospect develop! Fallon has future.



Lot 57A – MF 1501 Fallon 2Z 810F



MF 62J Natalie 122L 308N – Dam of Lots 56 and 57



Lot 58A – MF 511C Fiona Belle 802F

LOT
58
Cow

MF 1306 CHARLIZE GC 511C

P43675696 – Calved: Aug. 10, 2015 – Tattoo: BE 511C

KJ HVH 33N REDEEM 485T ET (SOD)(DLF,HVF,IEF)
H BK CCC SR GAME CHANGER ET (CHB)(DLF,HVF,IEF)
P43296077 NJW 78P 63N LADYSPORT 51W ET (DLF,HVF,IEF)

SHF RADAR M326 R125 (SOD)(DLF,HVF,IEF)
HVH OKSANA 4L 33N (DLF,HVF,IEF)
TH JWR SOP 166 576 TUNDRA 63N (SOD)(DLF,HVF,IEF)
NJW BW LADYSPORT DEW 78P ET (DLF,HVF,IEF)

NJW 73S M326 TRUST 100W ET (SOD)(CHB)(DLF,HVF,IEF)
MF 308N ANNETTE 1306 ET
P43403116 MF 62J NATALIE 122L 308N (DLF,HVF,IEF)

KCF BENNETT 3008 M326 (SOD)(DLF,HVF,IEF)
NJW P606 72N DAYDREAM 73S (DLF,HVF,IEF)
REMITALL ONLINE 122L (SOD)(CHB)(DLF,HVF,IEF)
MSU MISS WRANGLER 62J

BMSIS	28																	
BIIS	23	CE	BW	WW	YW	DMI	SC	SCF	MM	M&G	MCE	MCW	UDDR	TEAT	CW	FAT	REA	MARB
CHBS	39	-3.2	4.7	62	104	0	1.0	16	26	57	4.1	138	1.30	1.30	82	-0.010	0.71	0.08

- Big and rugged 2-year-old Game Changer that milked really hard! She weaned off our heaviest heifer calf really efficiently. Her mother is a Trust x Natalie cow that is one of my favorites! This cow's family lineage is full of fertility.
- Charlize sells safe in calf to the popular Denver bull, K Rustic 711 ET, with a projected calving date of Jan. 1, 2019.



Lot 58 – MF 1306 Charlize GC 511C

LOT
58A
Cow

MF 511C FIONA BELLE 802F

P43933102 – Calved: Jan. 1, 2018 – Tattoo: BE 802F

BAR SLHF 028 240 (DLF,HVF,IEF)
BR BELLE AIR 6011 (DLF,HVF,IEF)
43724674 BR BELLE 4082 ET (DLF,HVF,IEF)

CHURCHILL SENSATION 028X (SOD)(CHB)(DLF,HVF,IEF)
CHURCHILL LADY 078X (DLF,HVF,IEF)
GOLDEN OAK OUTCROSS 18U (SOD)(CHB)(DLF,HVF,IEF)
BR CSF BRIELLE 8052 ET (DLF,HVF,IEF)

H BK CCC SR GAME CHANGER ET (CHB)(DLF,HVF,IEF)
MF 1306 CHARLIZE GC 511C
P43675696 MF 308N ANNETTE 1306 ET

KJ HVH 33N REDEEM 485T ET (SOD)(DLF,HVF,IEF)
NJW 78P 63N LADYSPORT 51W ET (DLF,HVF,IEF)
NJW 73S M326 TRUST 100W ET (SOD)(CHB)(DLF,HVF,IEF)
MF 62J NATALIE 122L 308N (DLF,HVF,IEF)

BMSIS	26																		
BIIS	23	CE	BW	WW	YW	DMI	SC	SCF	MM	M&G	MCE	MCW	UDDR	TEAT	CW	FAT	REA	MARB	
CHBS	35	-2.0	3.7	63	105	0.1	1.5	15.4	28	60	3.6	121	1.25	1.25	78	0.028	0.69	0.15	

- Fiona Belle is a powerhouse cow prospect out of Denver Supreme Champion Belle Aire. You really admire her skeletal make up, depth of body and bone. This one has a big future ahead of her!



BR Belle Air 6011 – Sire of Lot 58A

NOTES

Please join us for dinner and cocktail on Saturday October 13.
The cattle will be out for viewing around 3

Ridgeview Farm

Bob & Jami Goble

Bob and Jami Goble
11554 100th St.
Alto, MI 49302
616-299-8681

jami@ridgeviewfarm-goble.com

Lots 1-22

**LANDRUM
FAMILY FARMS**

1412 W. 900 S.
Warren, IN 46792
Thatcher 260-917-0177
Joe 260-466-8149
Jane 260-917-0036

Lots 23-32

GMF

• grand meadows farm •

Dave and Jill Bielema Family
greatlakesherefordbeef@gmail.com
grandmeadowsfarm.com
616-292-7474

Lots 33-39

mf
McDonald Farm

Scott McDonald
7791 Easter Ave. S.E.
Grand Rapids, MI 49508
616-446-2146
scott@mcdonaldplumbing.com

Lots 40-58A

Ridgeview Farm

Bob and Jami Goble

11554 100th St.

Alto, MI 49302

www.ridgeviewfarm-goble.com



Duke